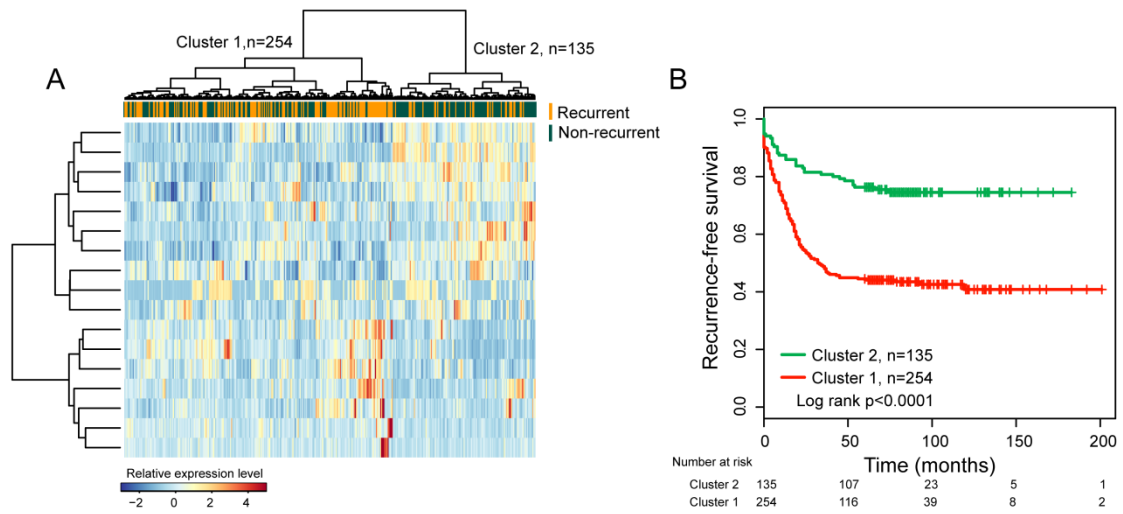


OMTN, Volume 12

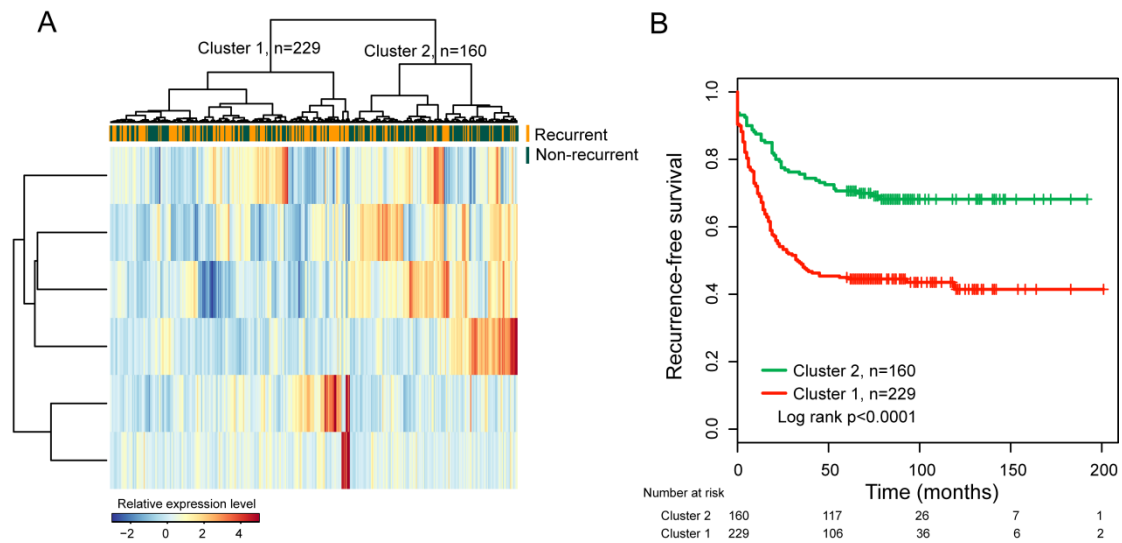
Supplemental Information

**Recurrence-Associated Long Non-coding RNA
Signature for Determining the Risk of Recurrence
in Patients with Colon Cancer**

Meng Zhou, Long Hu, Zicheng Zhang, Nan Wu, Jie Sun, and Jianzhong Su



Supplemental Figure S1. (A) Unsupervised clustering of patients based on the expression pattern of 17 recurrence-associated lncRNAs. (B) Kaplan-Meier estimates of the recurrence-free survival of patients in the two sample clusters based on 17 recurrence-associated lncRNAs.



Supplemental Figure S2. (A) Unsupervised clustering of patients based on the expression pattern of six lncRNAs in the signature. Recurrence. (B) Kaplan-Meier estimates of the recurrence-free survival of patients in the two sample clusters based on six lncRNAs in the signature.

Supplemental Table S1. Clinical characteristics of patients with colon cancer in the six datasets

Characteristics	Discovery dataset	GSE39582 dataset	GSE14333 dataset	GSE17538 dataset	GSE33113 dataset	TCGA dataset
No. of patients	389	574	226	200	89	391
Age (years)						
Range	30.2-97	22-97	26-92	23-94	34-95	31-90
Median	68	68.1	67	66	73	67
Gender						
Female	175	257	120	98	47	181
Male	214	317	106	102	42	210
Stage						
I/II	196	304	135	134	89	227
III/IV	193	266	91	66	0	155
Unknown		4				9
Recurrence						
Yes	179	179	50	55	18	89
No	210	395	176	145	71	302
Recurrence-free survival (months)						
Range	0-201	0-201	0.9-142.6	0-142.6	1.8-120	0-147.9
Median	65	44.5	38.5	39	39.5	21.3