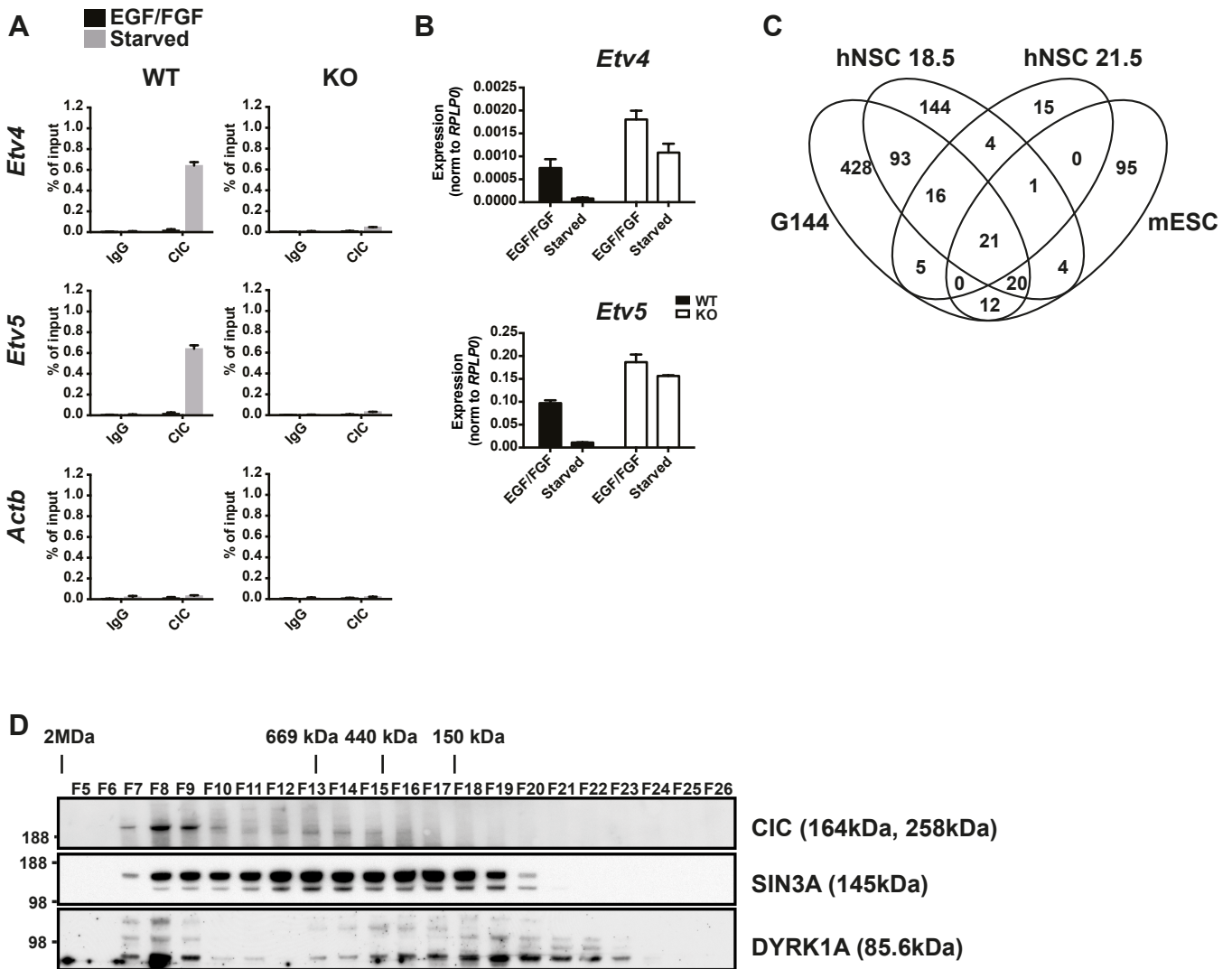


Supplementary Figure S2



Supplementary figure S2

A) NCSs differentiated from WT and *Cic* KO mESCs, grown in complete NSC medium or starved by growth factor withdrawal for 16 h. ChIP-qPCR at the promoter regions of *Etv4* and *Etv5* and control region *Actb* using antibodies against CIC and unspecific control IgG. **B)** RT-qPCR for *Etv4* and *Etv5* in NCSs differentiated from WT and KO mESCs. Data are represented as mean \pm SD, n=3. **C)** Overlap of genes bound by CIC (+/- 5kb from TSS) in hNSCs, G144 and mouse ESCs **D)** Immunoblotting with the indicated antibodies on different fractions of HEK-293 nuclear lysates separated on a Superose 6 size-exclusion chromatography.