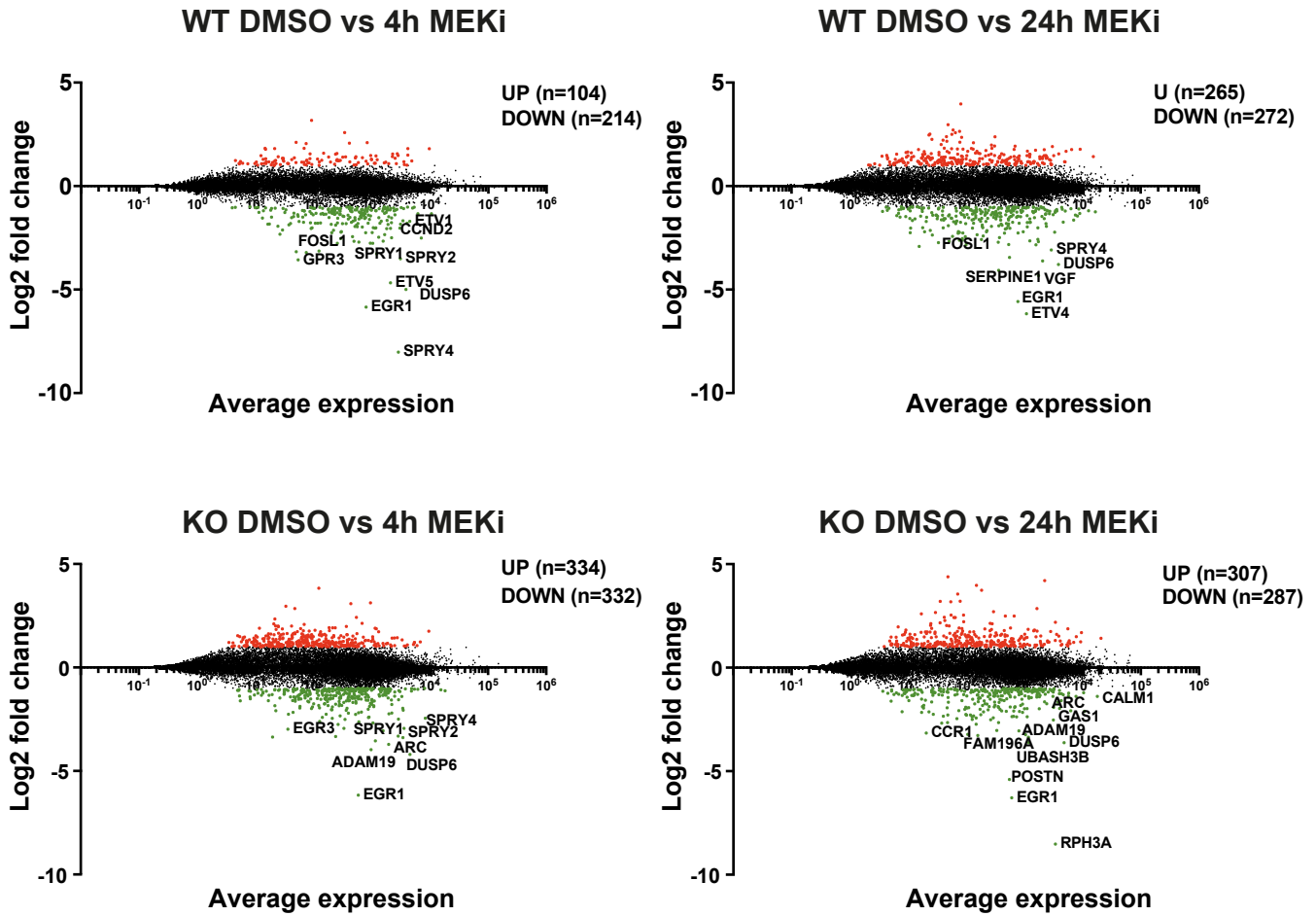
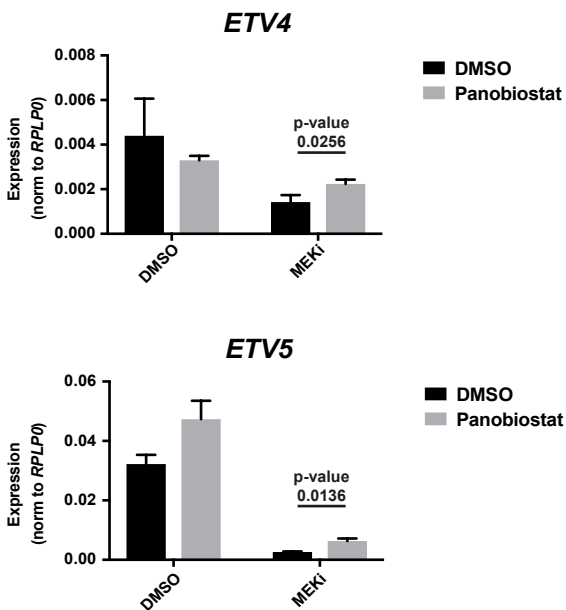


Supplementary Figure S4

A



B



Supplementary Figure S4

A) Global gene expression changes after MEK inhibition in G144 cells. Genes significantly deregulated (FDR < 0.01, fold change ≥ 2) between samples are marked in red (up) and green (down). The most downregulated genes are highlighted with gene symbols.

B) Expression of *ETV4* and *ETV5* in G144 cells after 4h MEK inhibition +/- treatment with HDAC inhibitor Panobiostat (50 nM). Data are represented as mean ± SD, n=3