

Supporting Information

Structure-activity relationships of new natural
product-based diaryloxazoles with selective activity
against androgen receptor-positive breast cancer
cells

Andrew J. Robles,[†] Shelby McCowen,^{§,⊥} Shengxin Cai,^{Ⓛ,∇} Michaels Glassman,^{§,⊥} Francisco

Ruiz II,^{§,¥} Robert H. Cichewicz,^{Ⓛ,∇} Stanton F. McHardy,^{*,†,§} and Susan L. Mooberry^{*,†,‡}

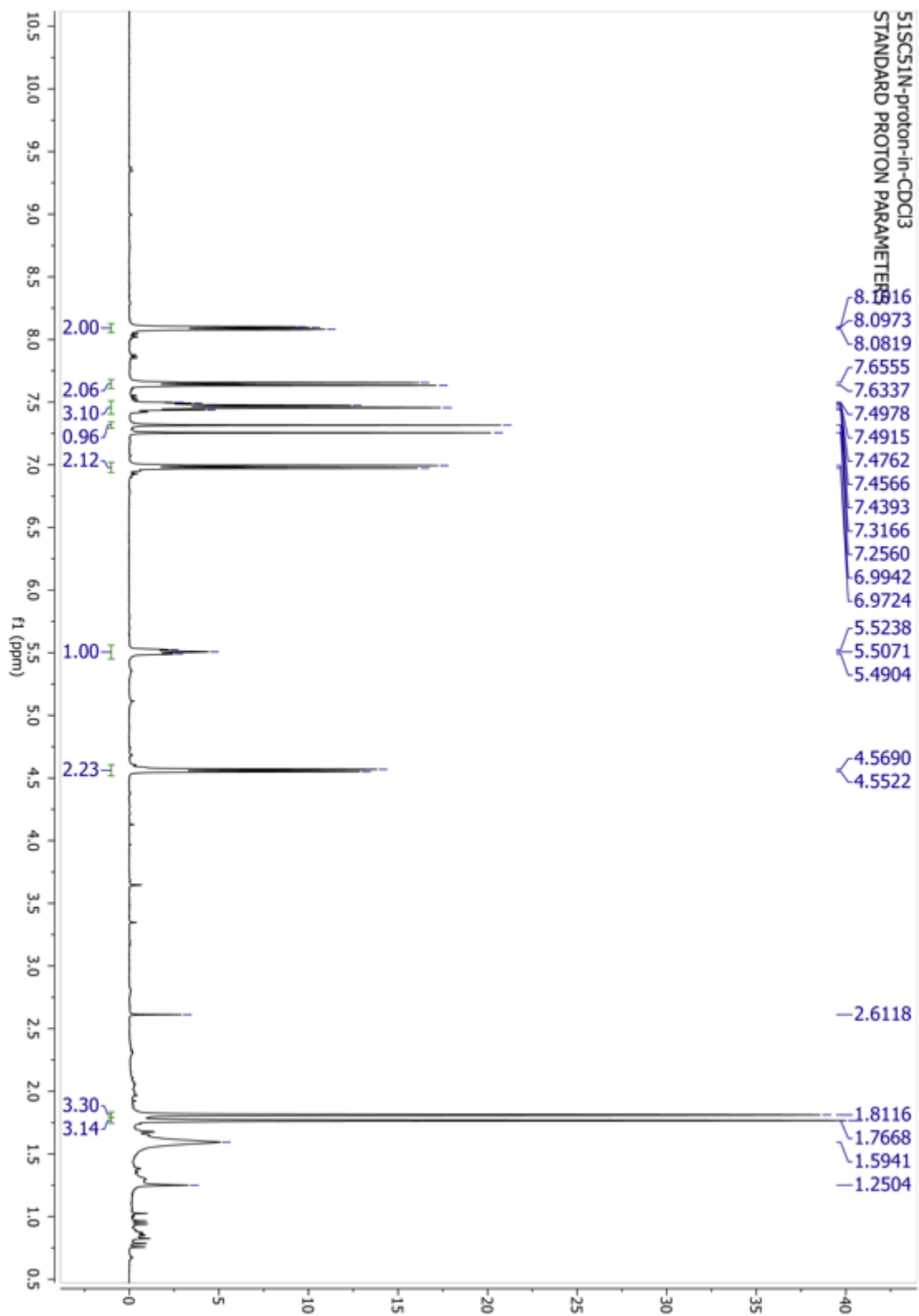
[†]Department of Pharmacology, and [‡]UT Health San Antonio Cancer Center, UT Health San Antonio, 7703 Floyd Curl Drive, San Antonio, TX 78229, U.S.A.

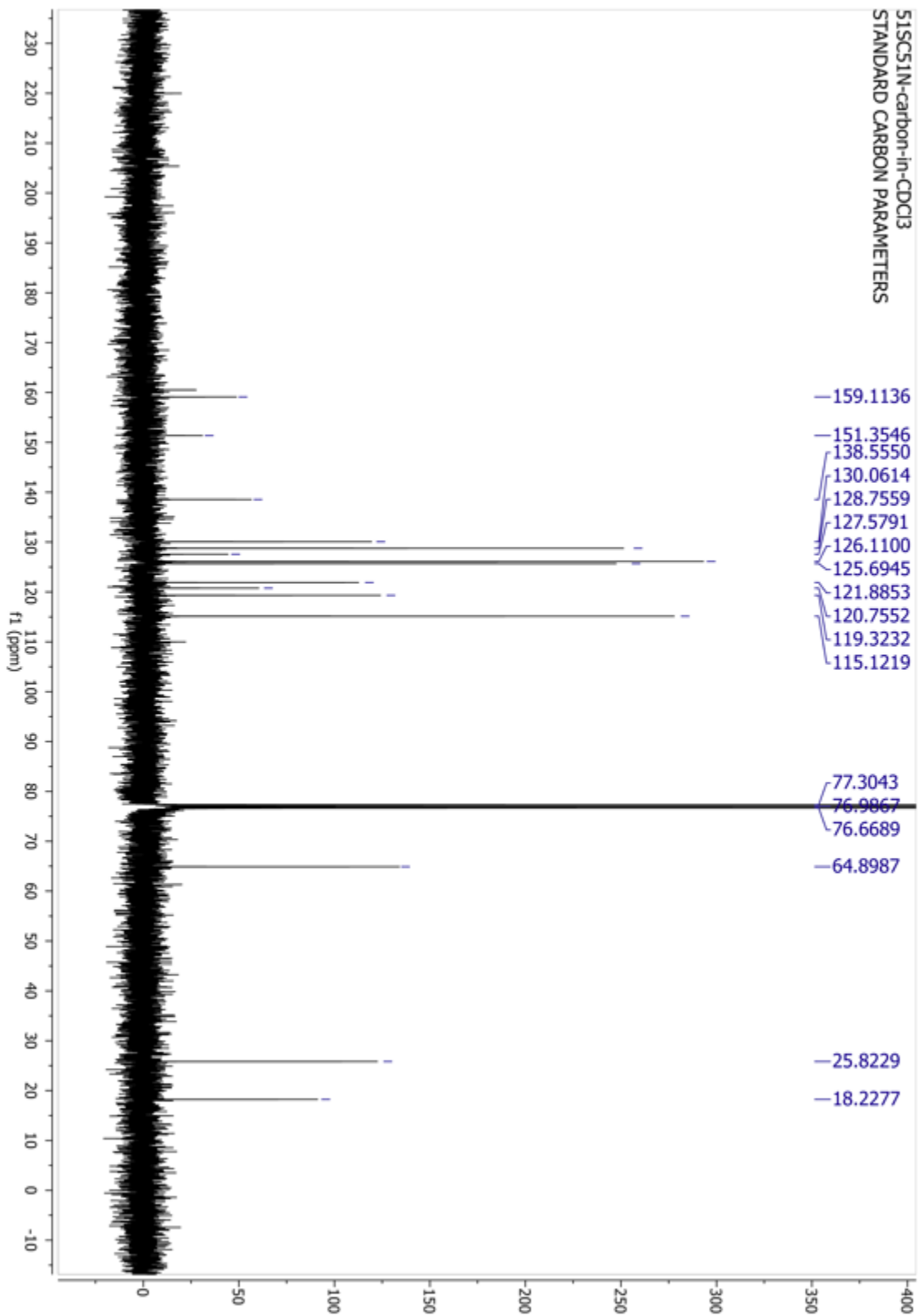
[§]Center for Innovative Drug Discovery, and [⊥]Department of Chemistry, The University of Texas at San Antonio, 1 UTSA Circle, San Antonio, TX, 78249. U.S.A.

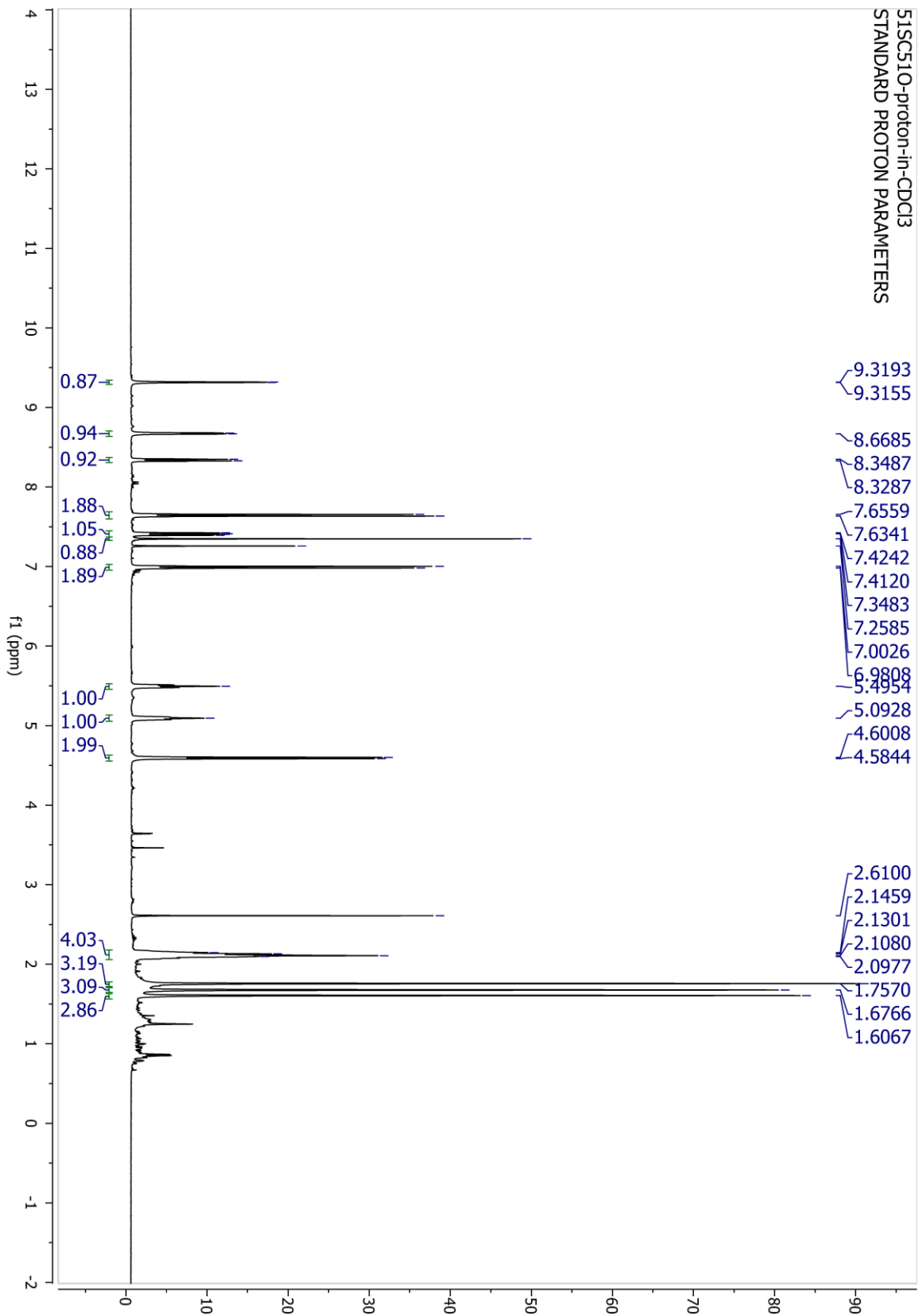
[Ⓛ]Natural Product Discovery Group, Institute for Natural Products Applications and Research Technologies, and [∇]Department of Chemistry & Biochemistry, University of Oklahoma, 101 Stephenson Parkway, Norman, OK, 73019, U.S.A.

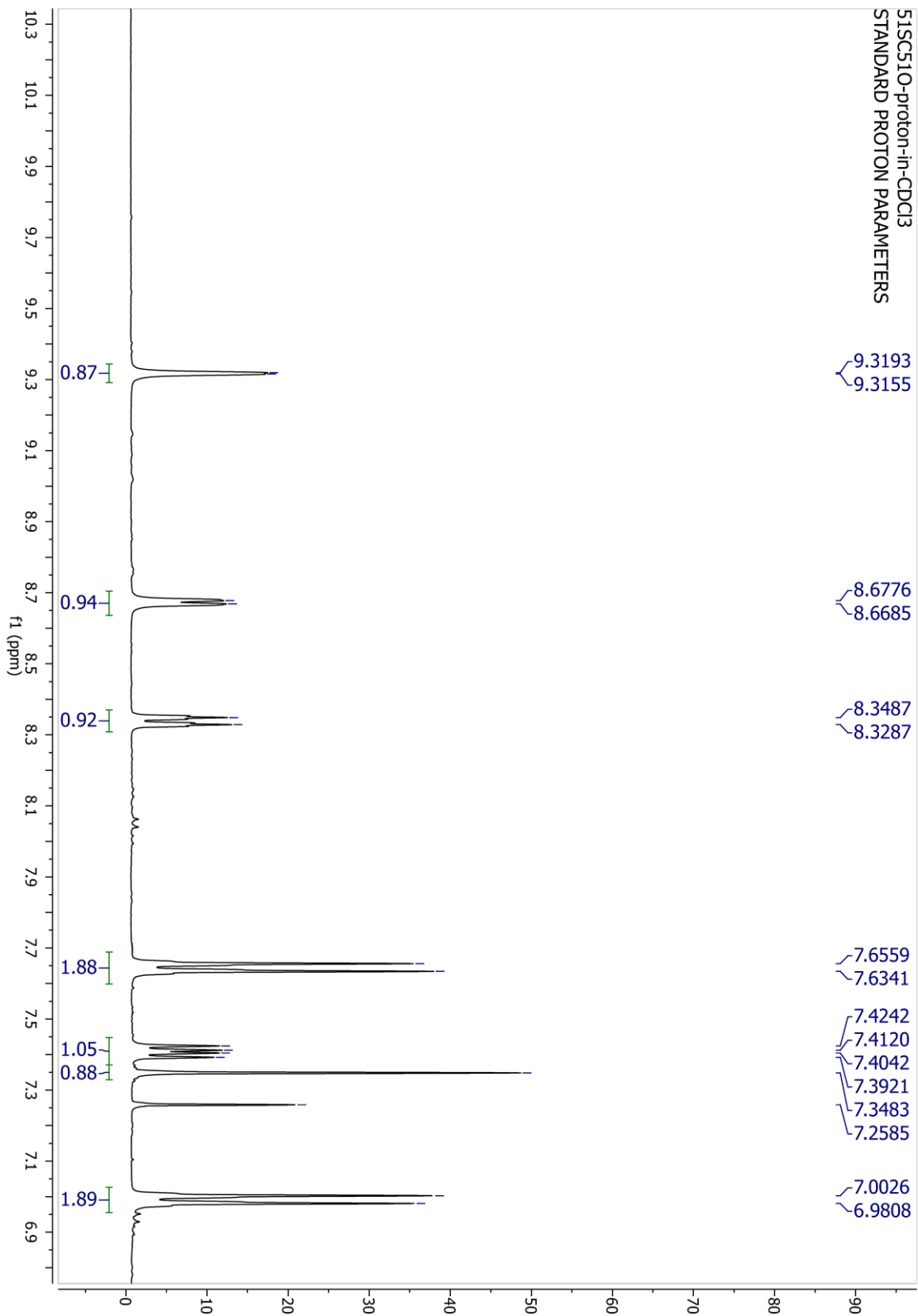
TABLE OF CONTENTS

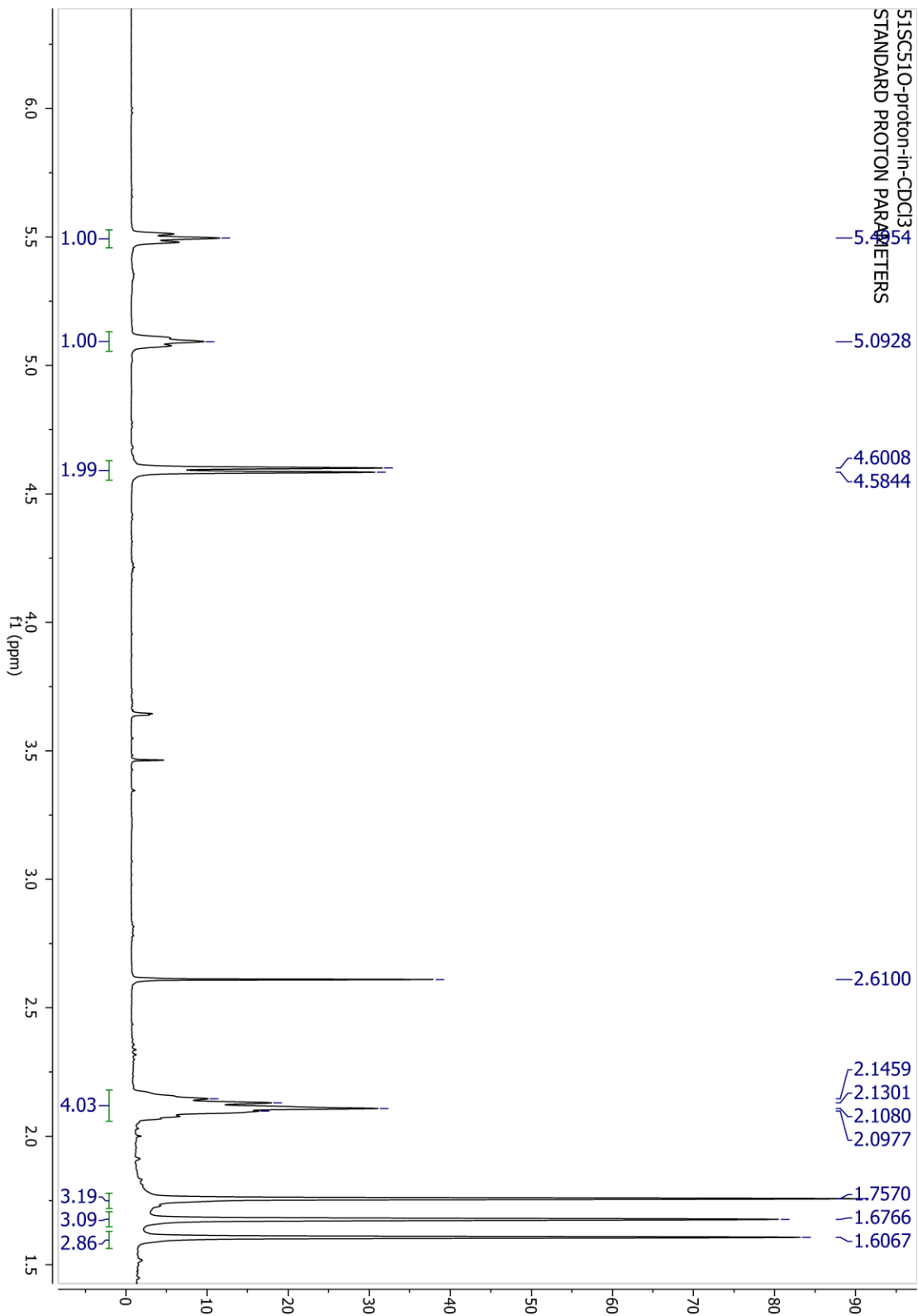
Figure S1:	^1H spectra for compound 1	Page S3
Figure S2:	^{13}C spectra for compound 1	Page S4
Figure S3:	^1H spectra for compound 2 (full)	Page S5
Figure S4:	^1H spectra for compound 2 (enlargement 1)	Page S6
Figure S5:	^1H spectra for compound 2 (enlargement 2)	Page S7
Figure S6:	^{13}C spectra for compound 2 (full)	Page S8
Figure S7:	^{13}C spectra for compound 2 (enlargement 1)	Page S9
Figure S8:	^{13}C spectra for compound 2 (enlargement 2)	Page S10
Figure S9:	gCOSY spectra for compound 1	Page S11
Figure S10:	NOESY2D spectra for compound 1 (full)	Page S12
Figure S11:	NOESY2D spectra for compound 1 (enlargement 1)	Page S13
Figure S12:	gCOSY spectra for compound 2	Page S14
Figure S13:	NOESY2D spectra for compound 2	Page S15
Figure S14:	NOESY2D spectra for compound 2 (enlargement 1)	Page S16
Figure S15:	^1H spectra for compound 6 (Brent Copp Route)	Page S17
Figure S16:	^1H spectra for compound 6 (Van Leuson Route)	Page S18

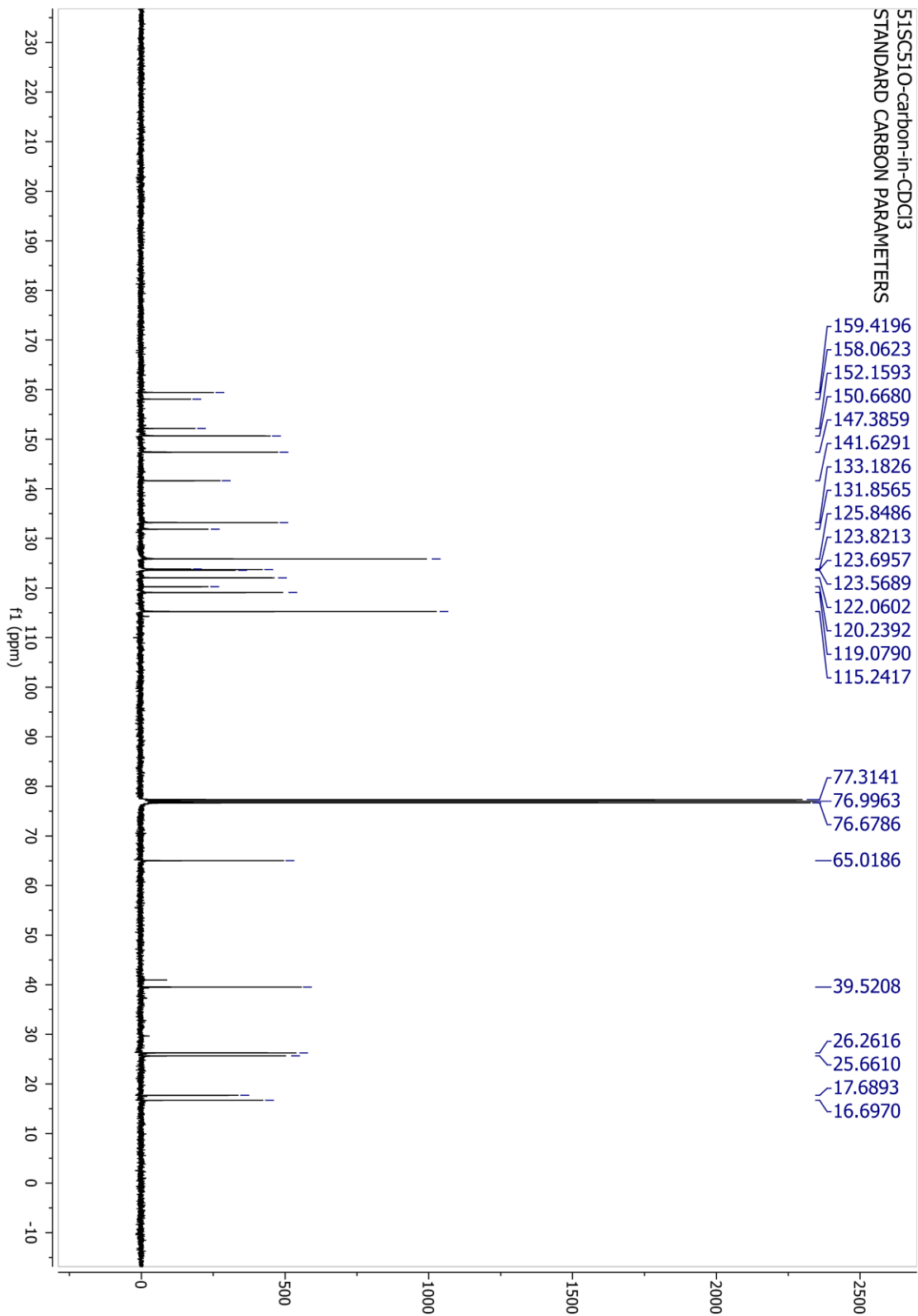


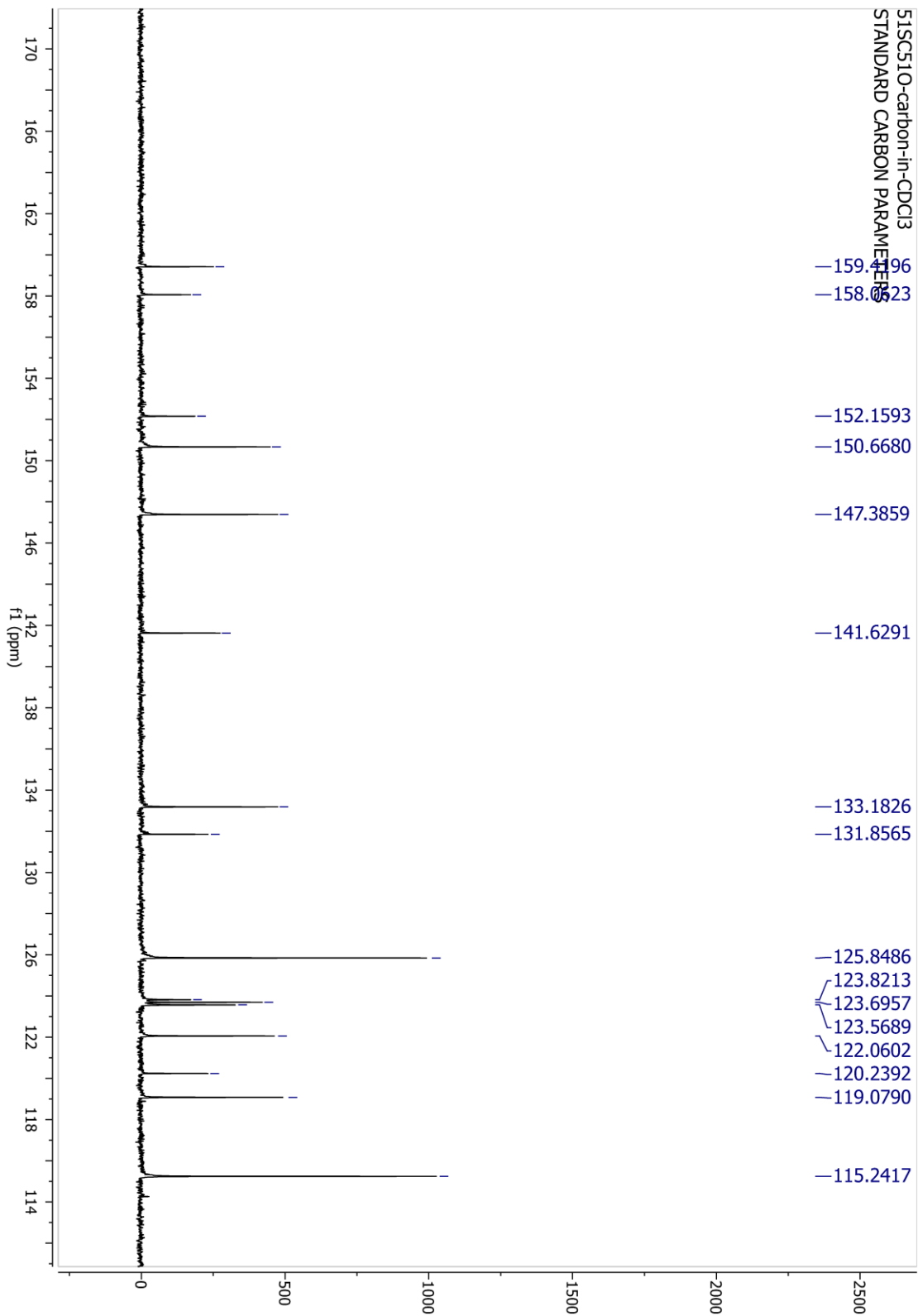


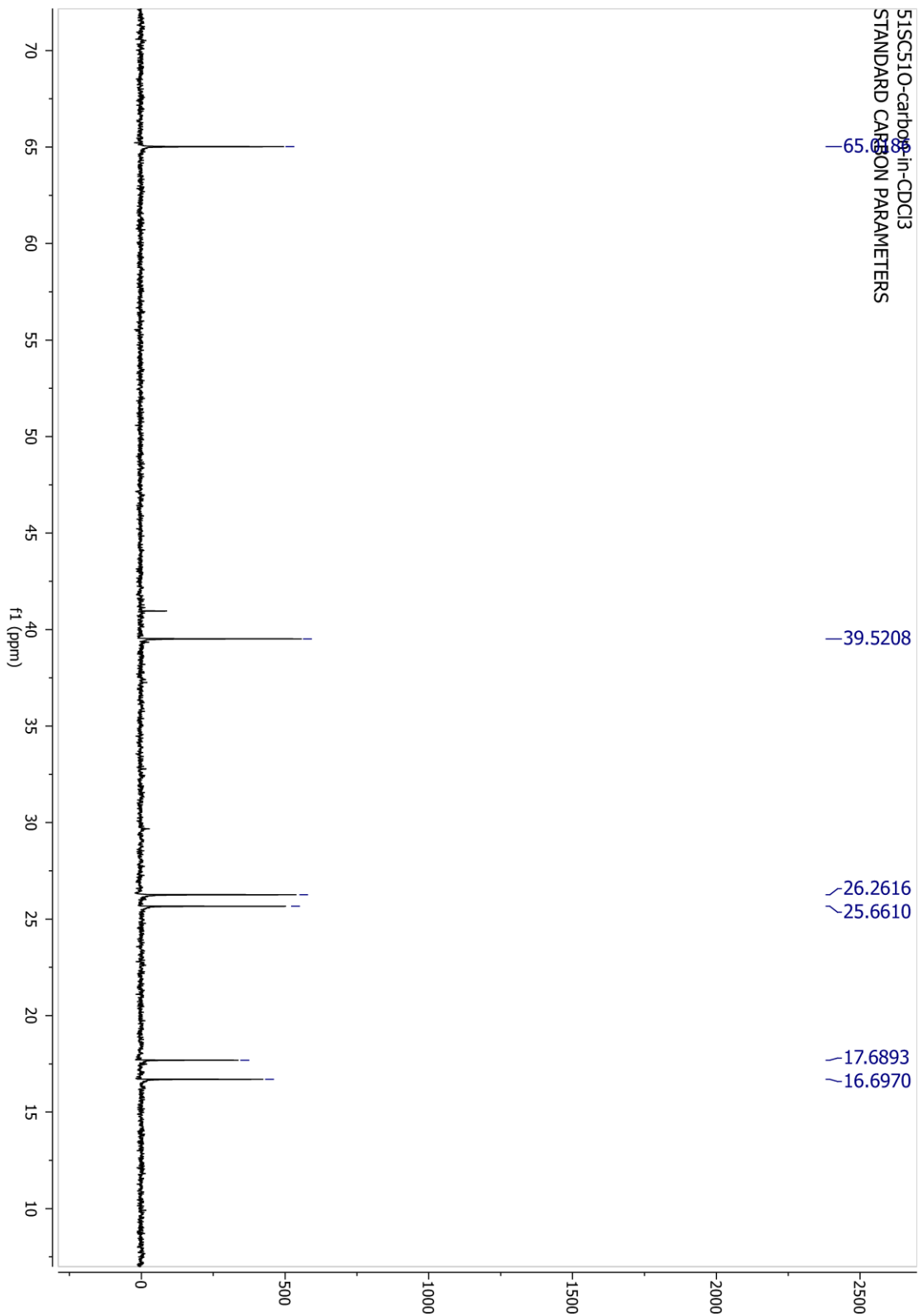




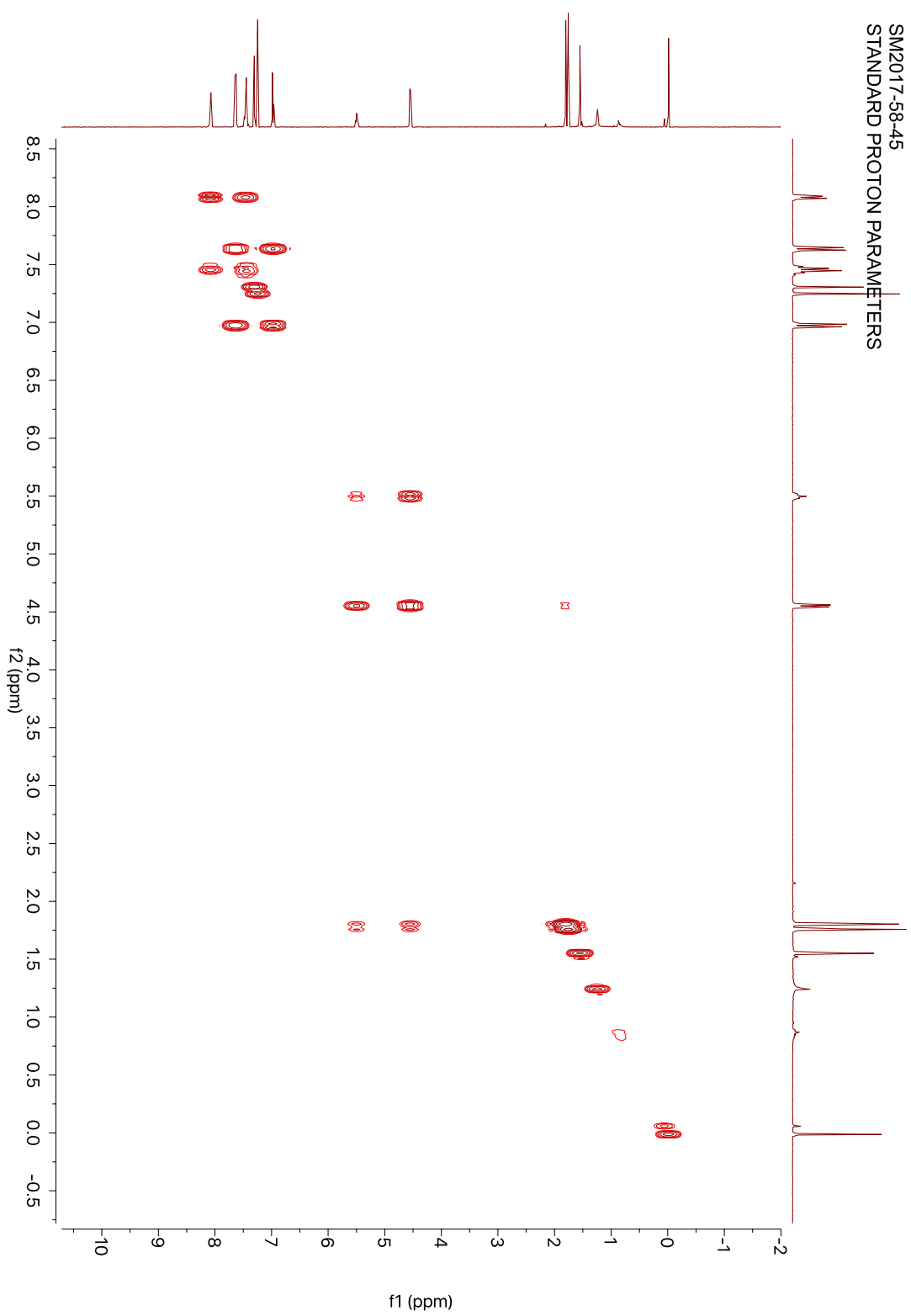


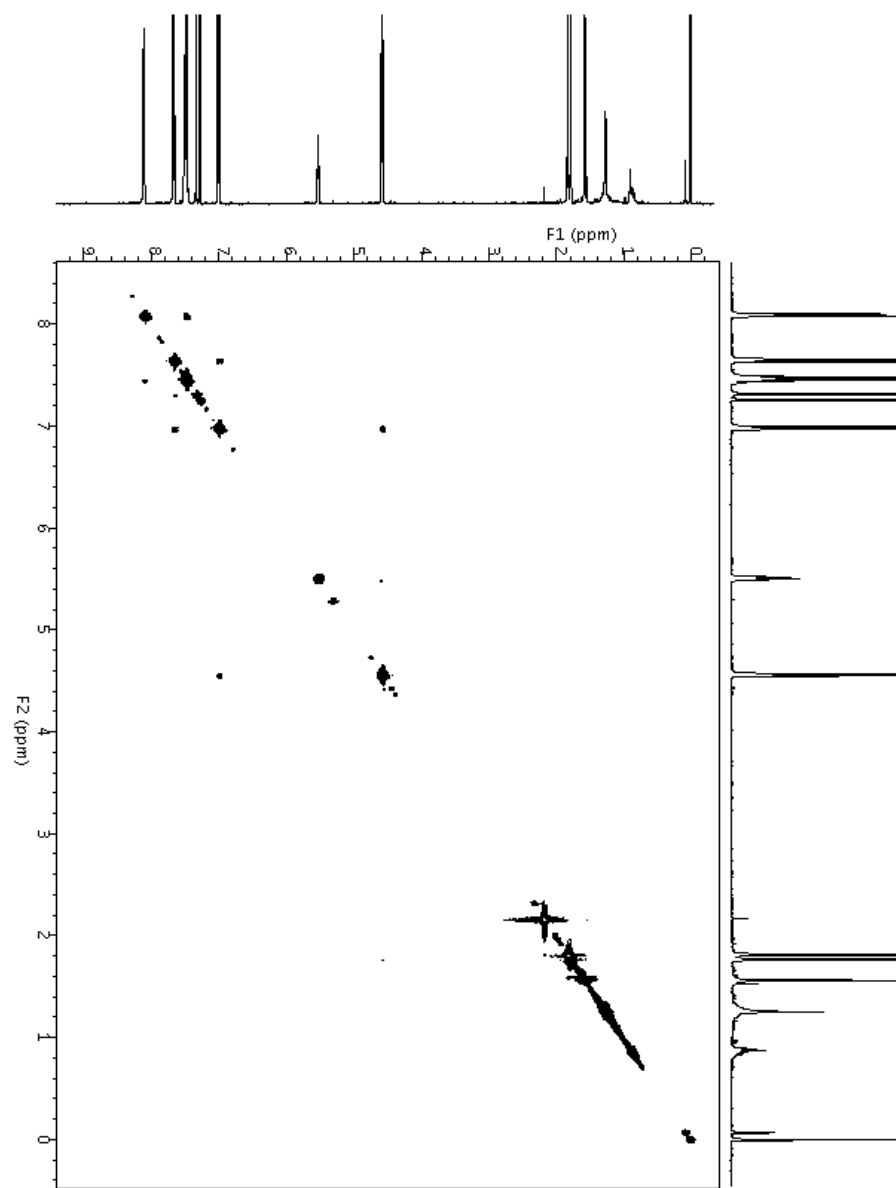


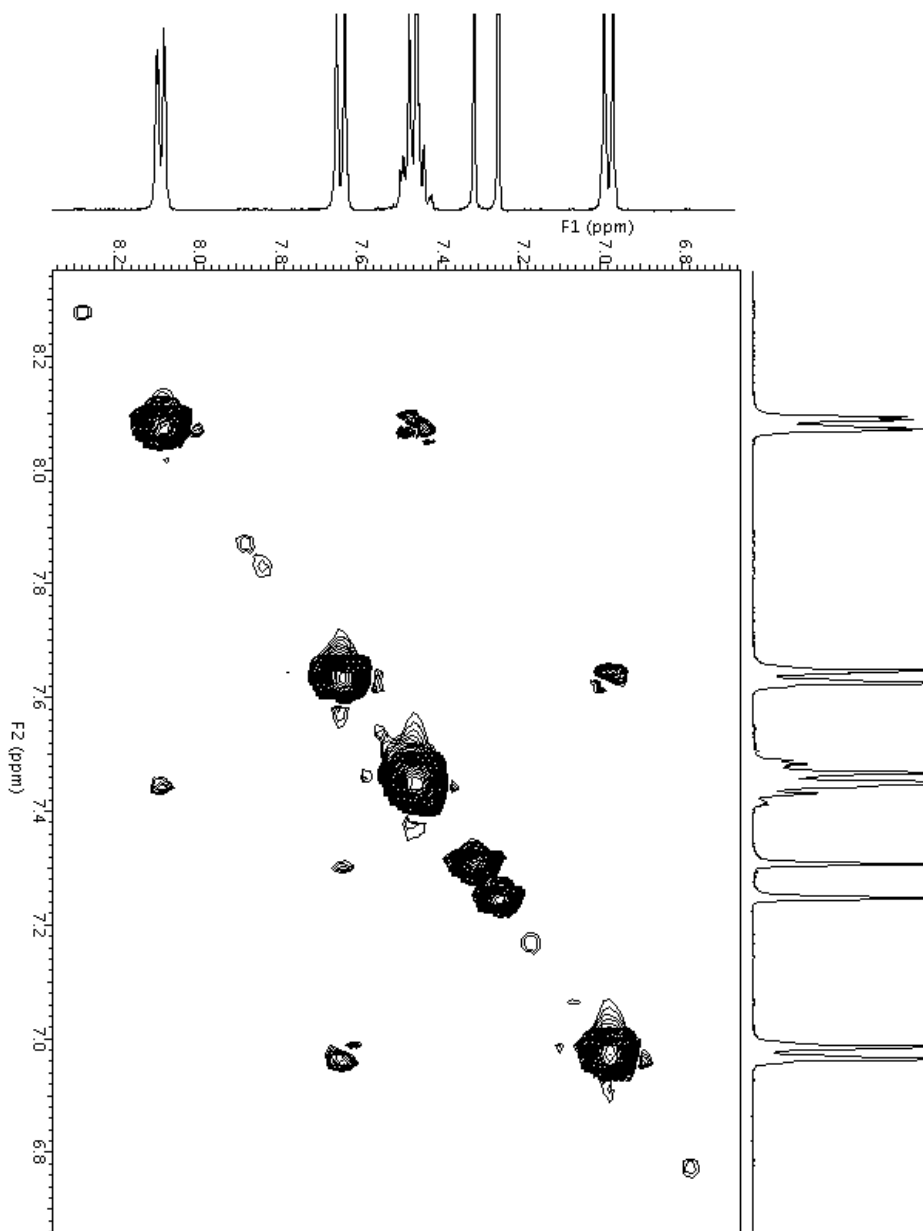




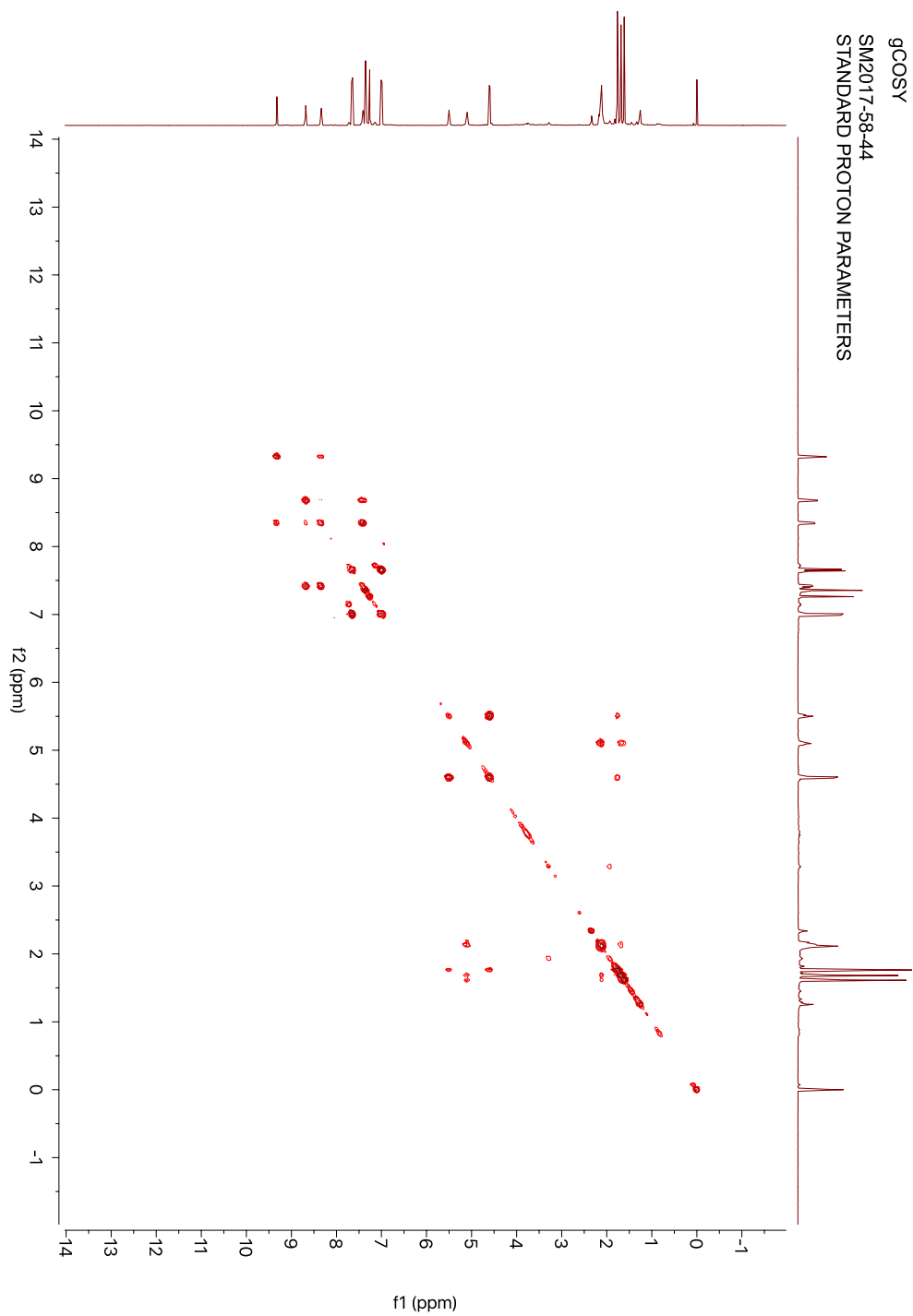
SM2017-58-45
STANDARD PROTON PARAMETERS

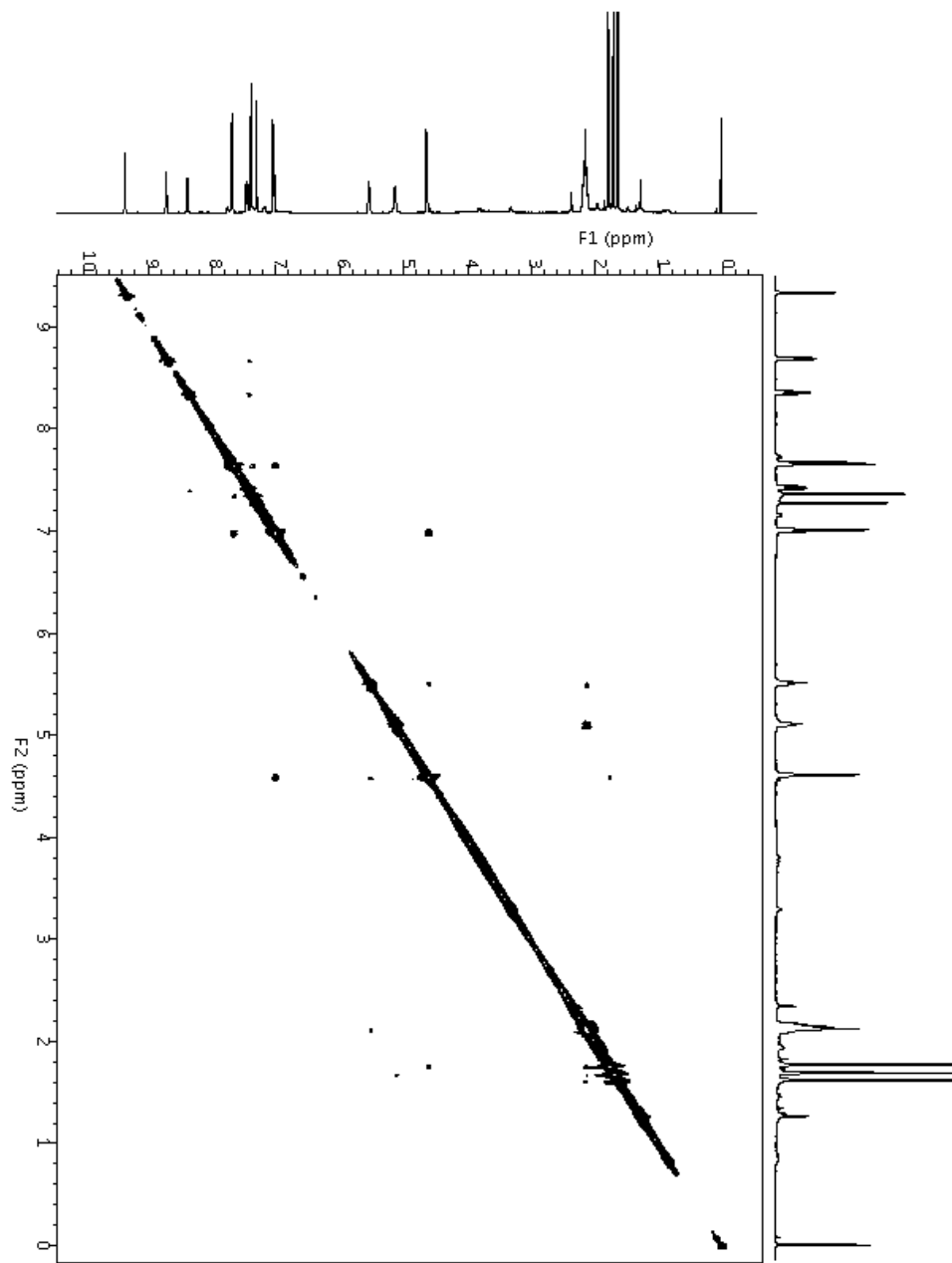


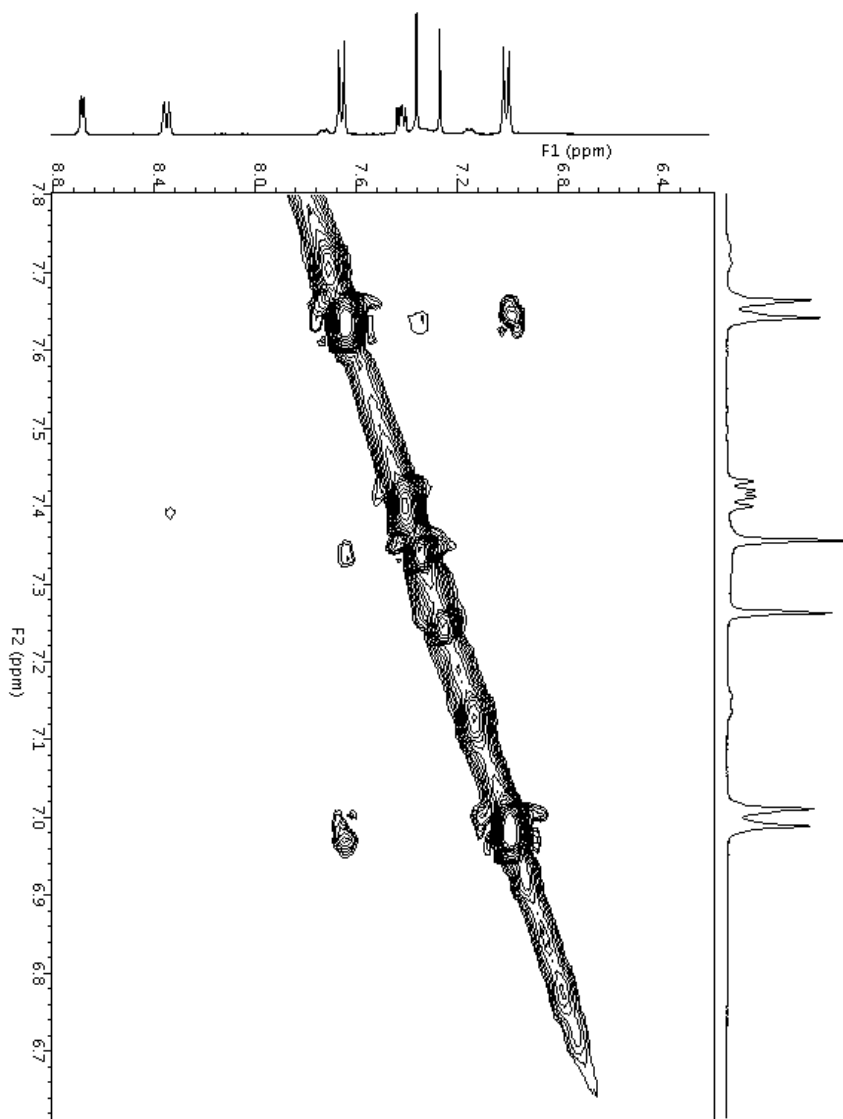


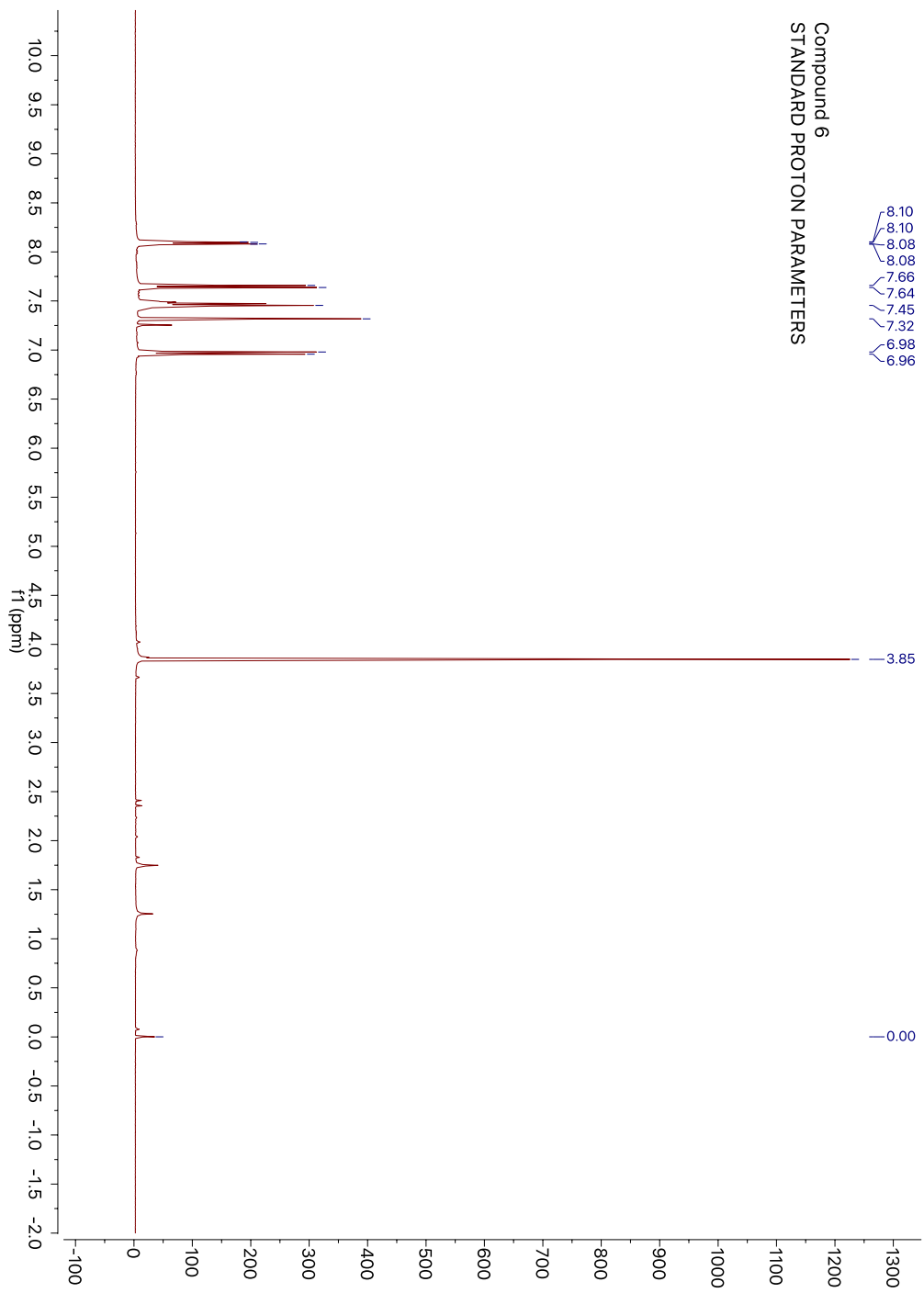


gCOSY
SM2017-58-44
STANDARD PROTON PARAMETERS

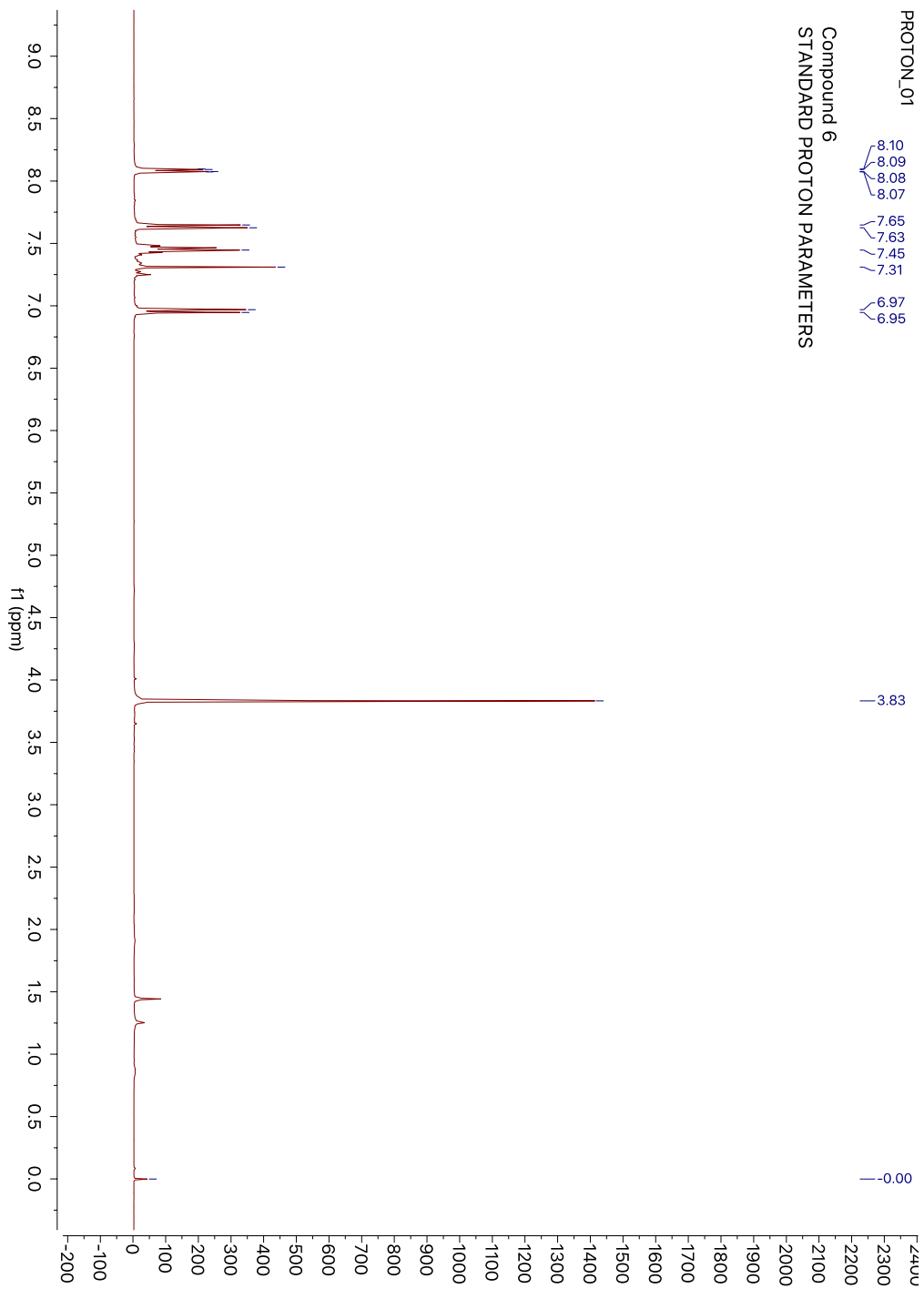








Brett Copp Route



Van Leuson Route