

Uncropped images of the original western blots

Correction of anemia in chronic kidney disease with *Angelica sinensis* polysaccharide via restoring EPO production and improving iron availability

Kaiping Wang¹, Jun Wu¹, Jingya Xu¹, Saisai Gu¹, Qiang Li², Peng Cao², Mingming Li², Yu Zhang², Fang Zeng^{2*}

¹*Hubei Key Laboratory of Nature Medicinal Chemistry and Resource Evaluation, Tongji Medical College of Pharmacy, Huazhong University of Science and Technology, Wuhan, China*

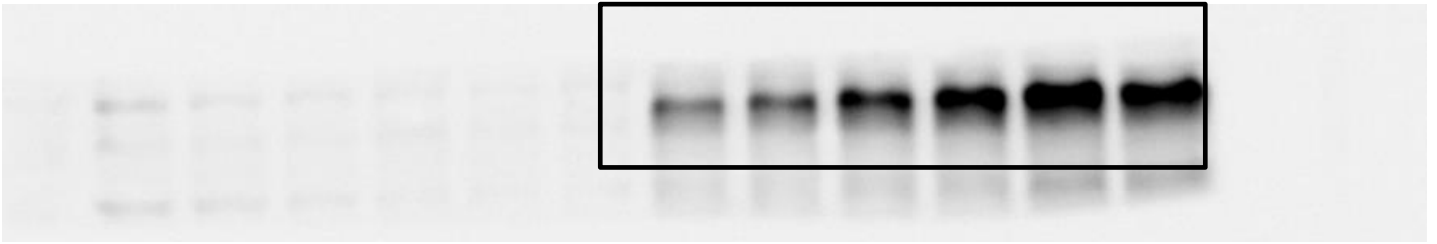
²*Department of Pharmacy, Union Hospital of Huazhong University of Science and Technology, Wuhan, China*

*Corresponding author at: Department of Pharmacy, Union Hospital of Huazhong University of Science and Technology, No. 1277, Jiefang Road, 430022, Wuhan, China

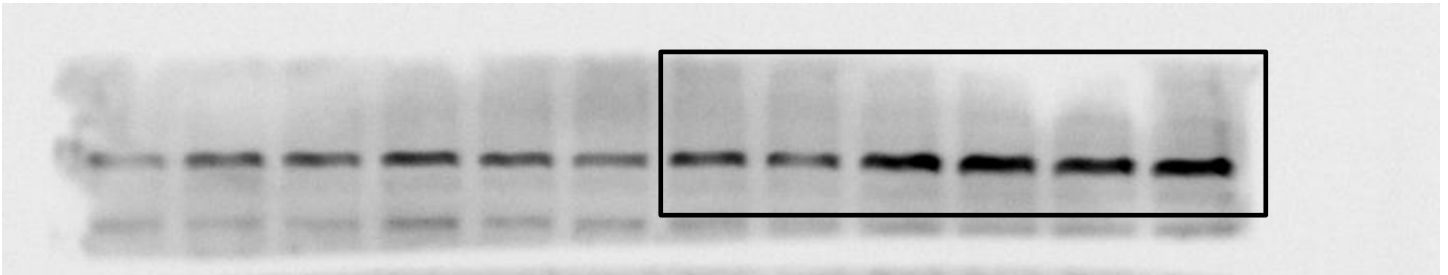
E-mail address: fangzengwhuh [@163.com](mailto:fangzengwhuh@163.com) (Fang Zeng)

Fig. 2A

HIF-1 α



HIF-2 α



β -actin

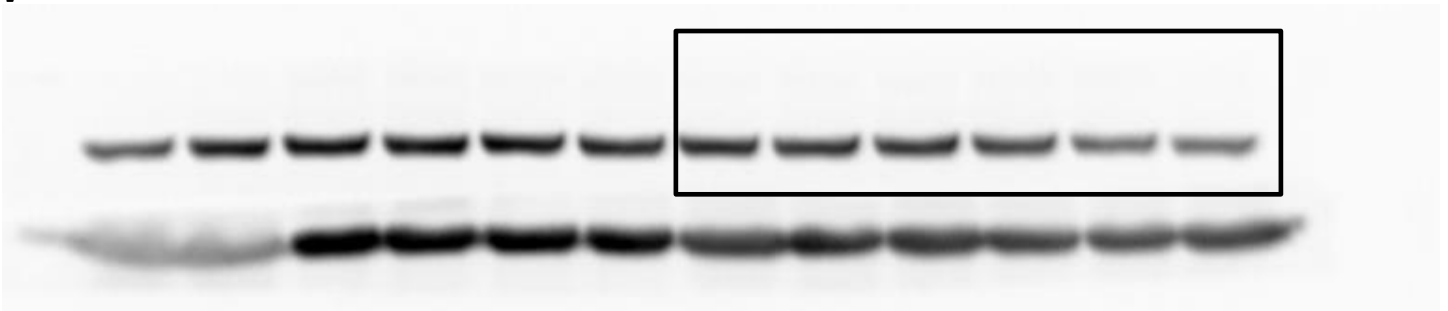
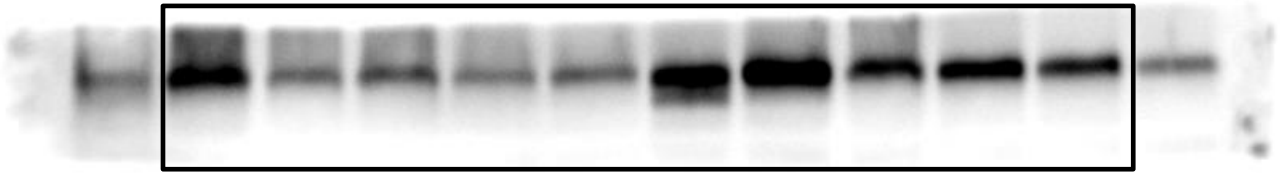
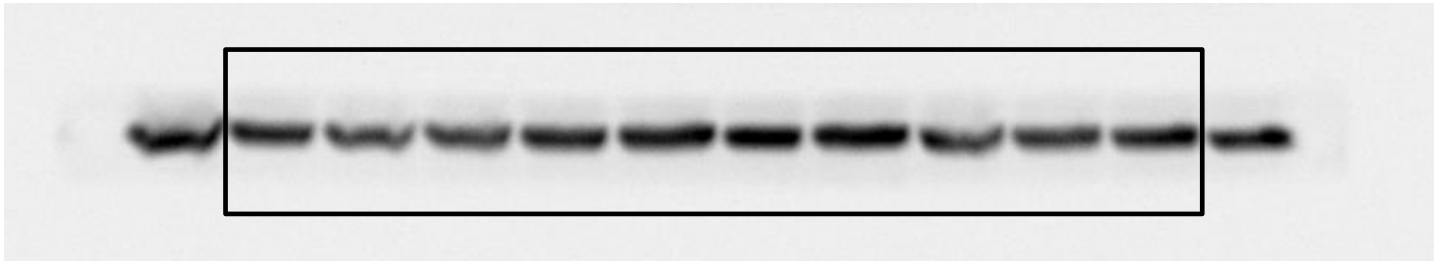


Fig. 2E

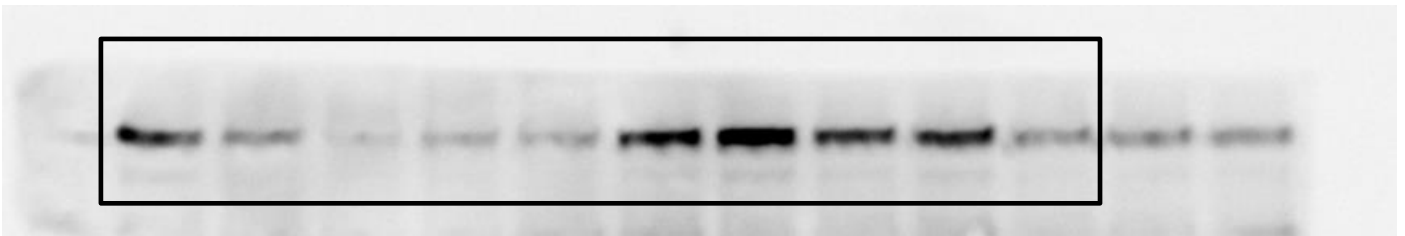
HIF-1 α



β -actin



HIF-2 α



β -actin

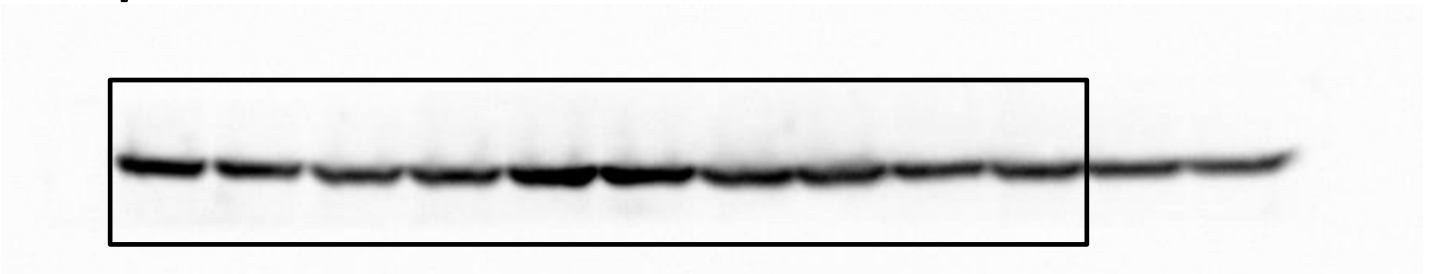
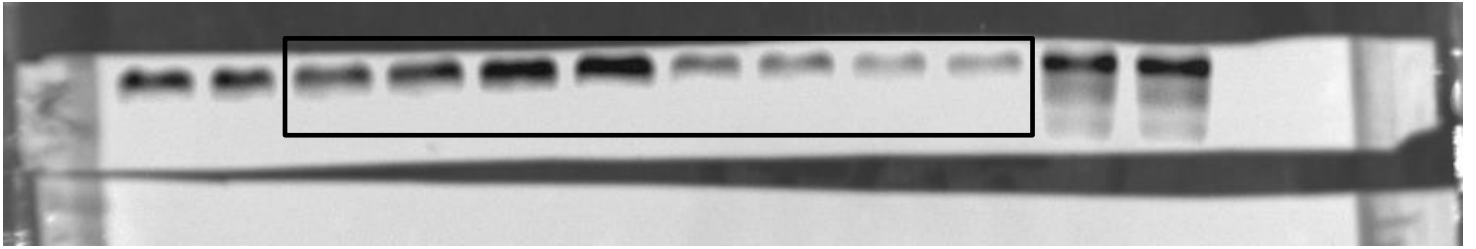


Fig. 3A

GATA2



Histone H3.1

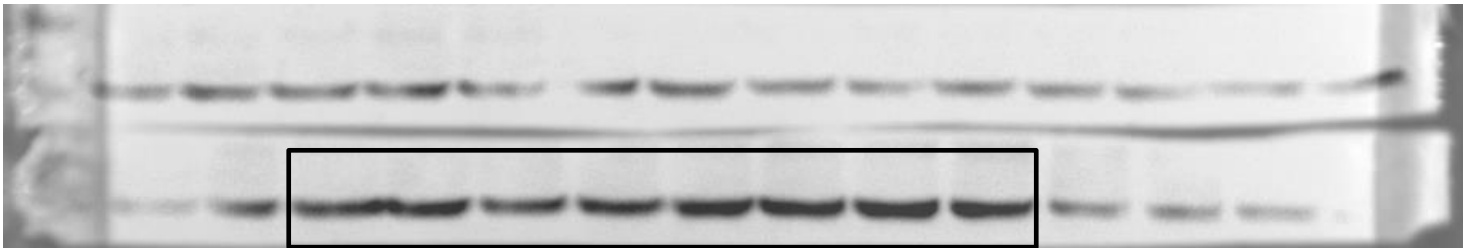
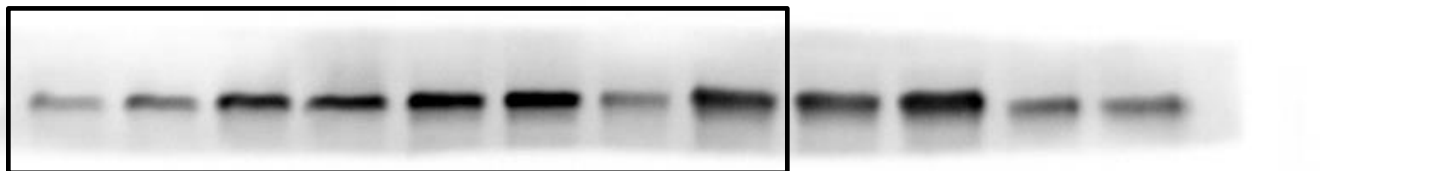


Fig. 3D

GATA2



NF- κ B



Histone H3.1

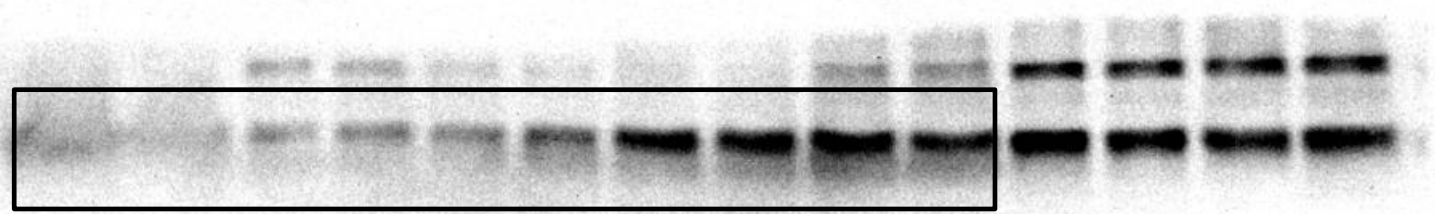


Fig 6.D

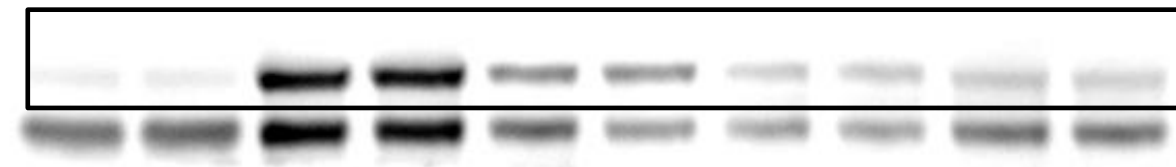
HIF-1 α



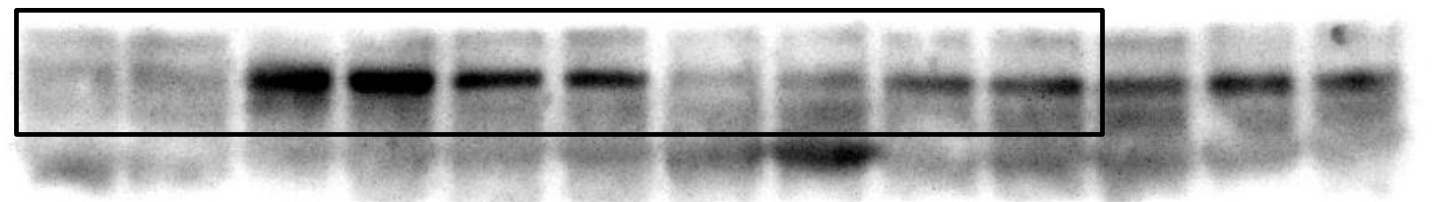
HIF-2 α



NF- κ B



GATA2



β -actin

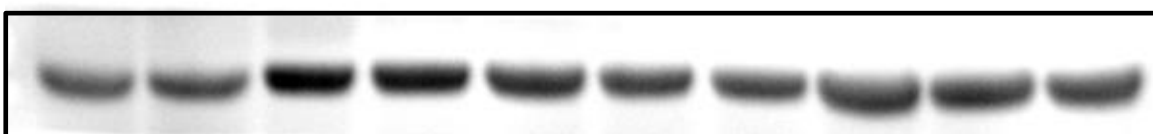
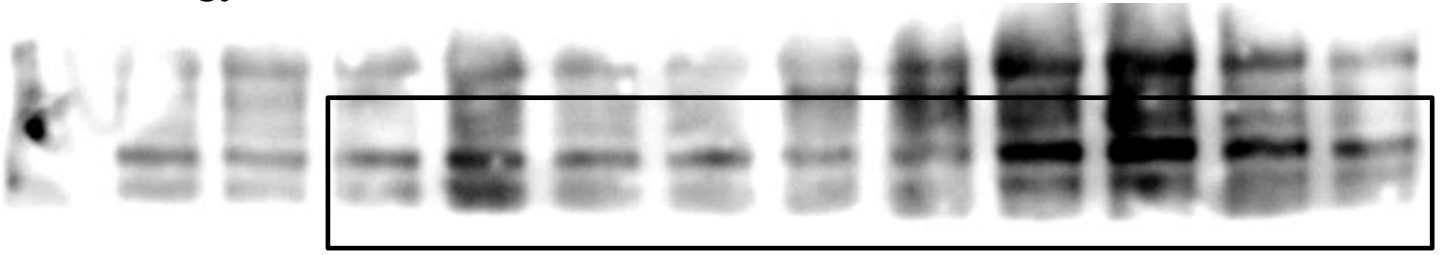
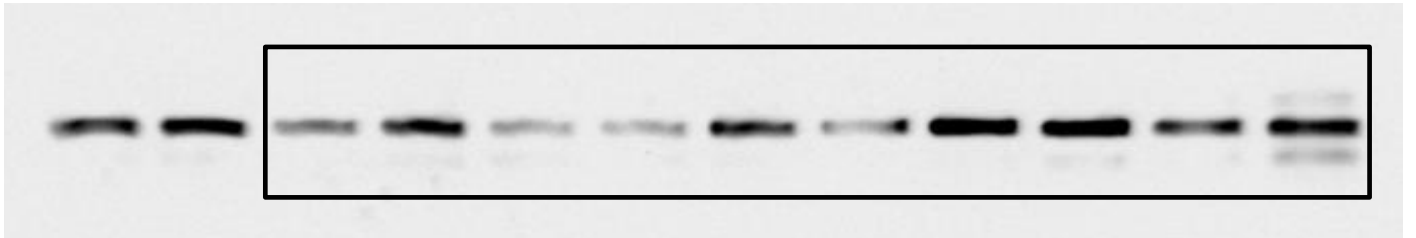


Fig 6.E

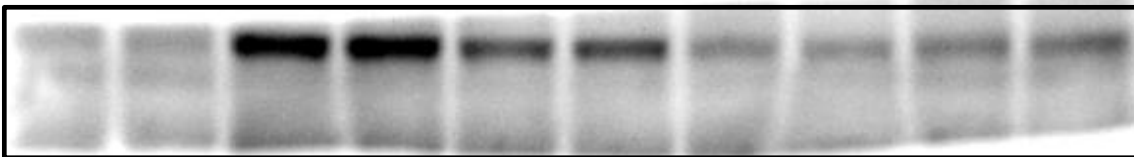
HIF-1 α



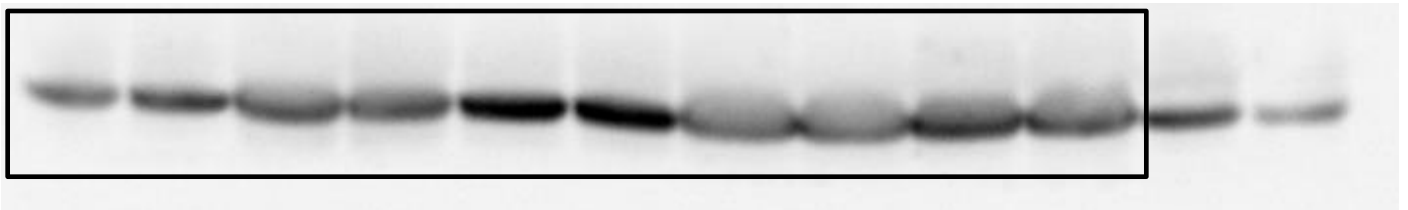
HIF-2 α



NF- κ B



GATA2



β -actin

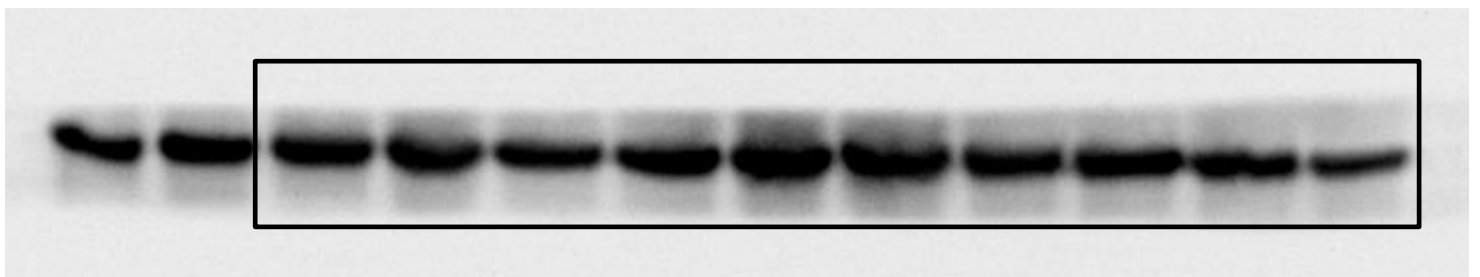
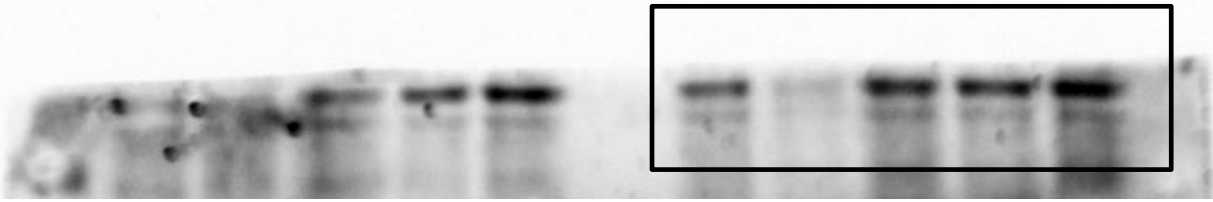
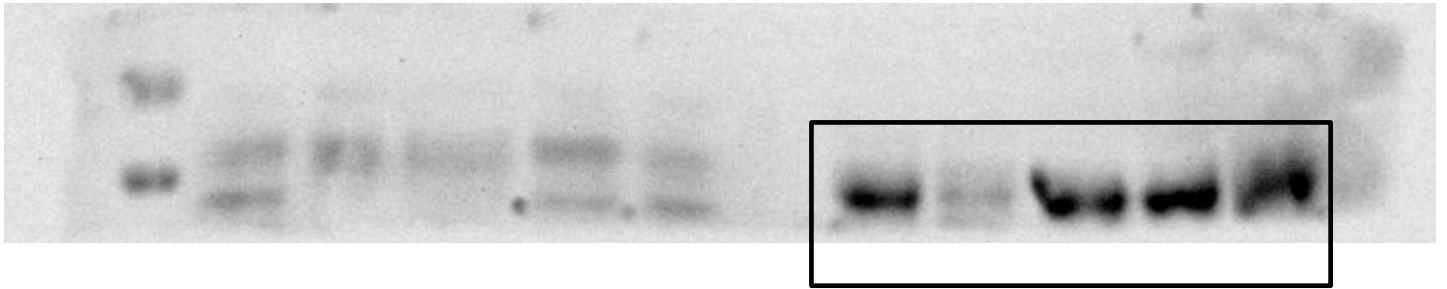


Fig. 7B

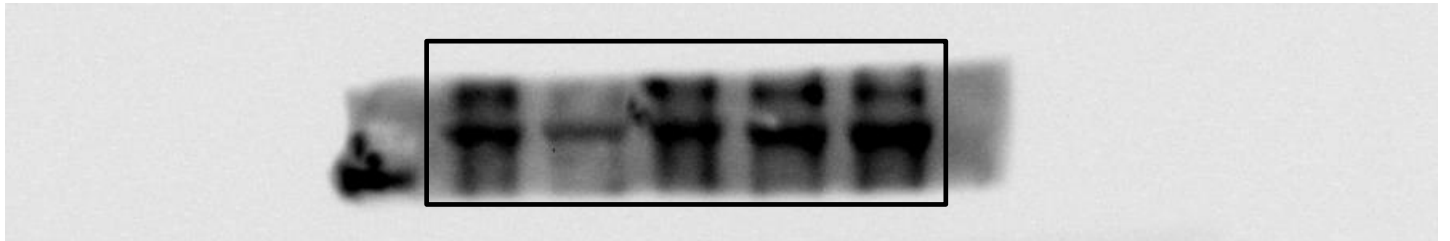
p-JAK2



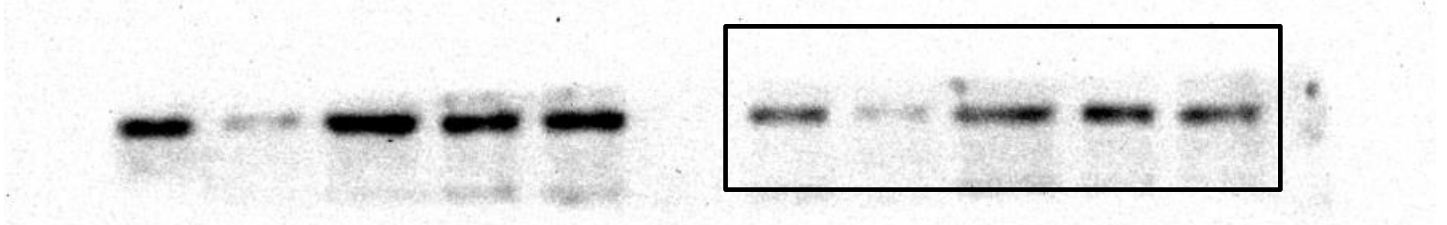
p-STAT5



p-PI3K



p-Akt



β -actin

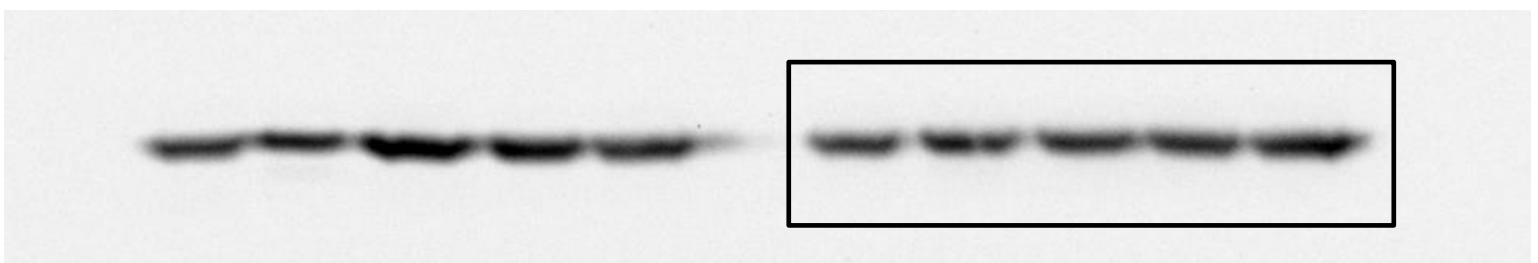
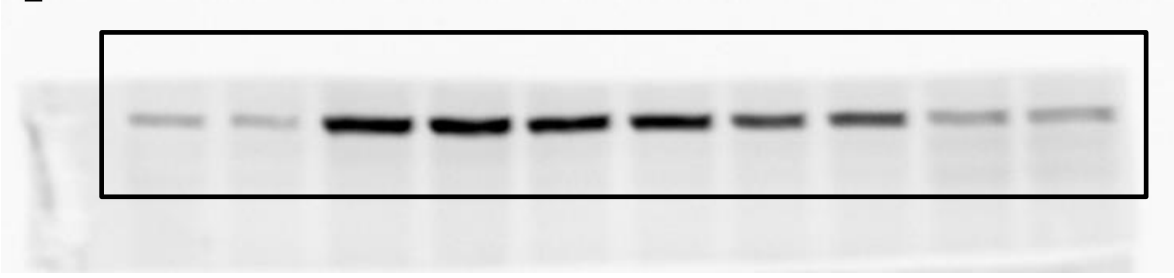
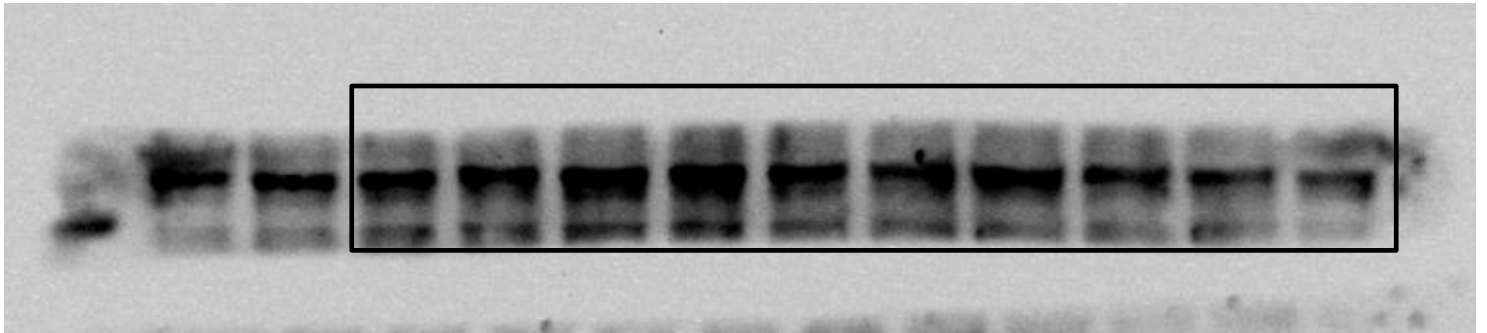


Fig 8.D

p-STAT3



p-SMAD1/5/8



β -actin



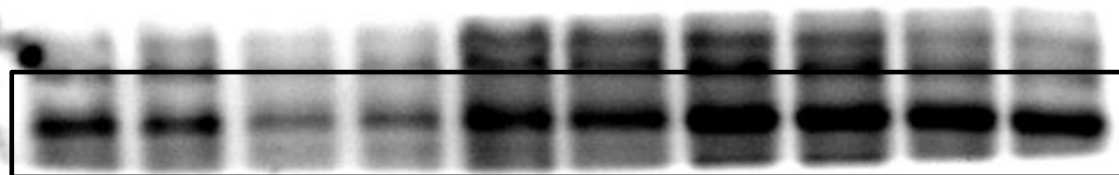
Fig 8.F

Spleen

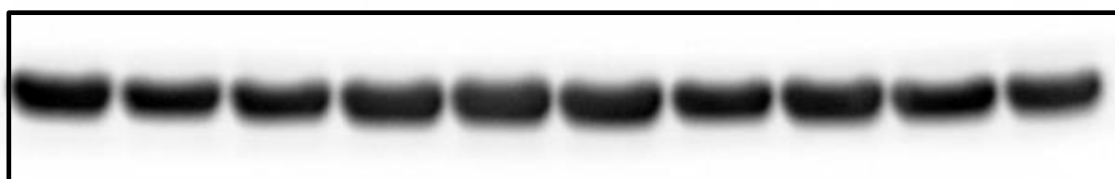
ferritin



ferroportin

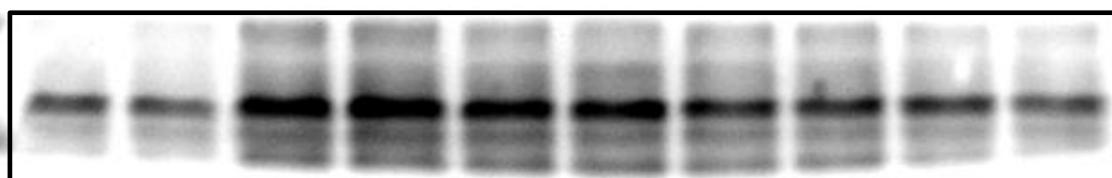


β -actin

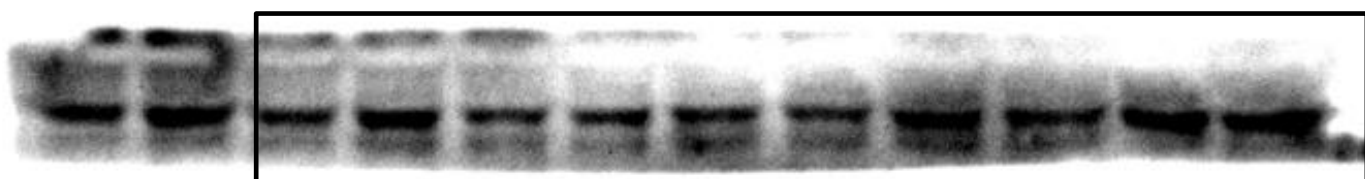


Liver

ferritin



ferroportin

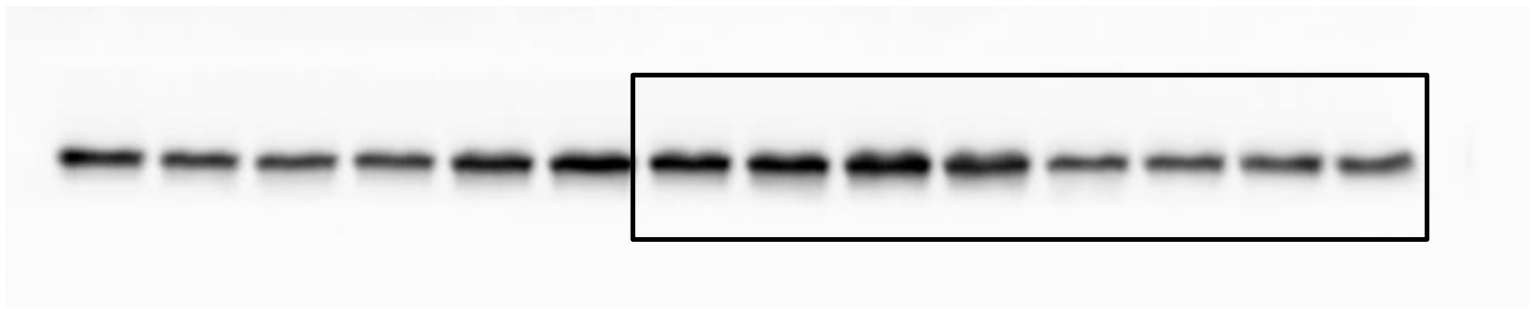


β -actin

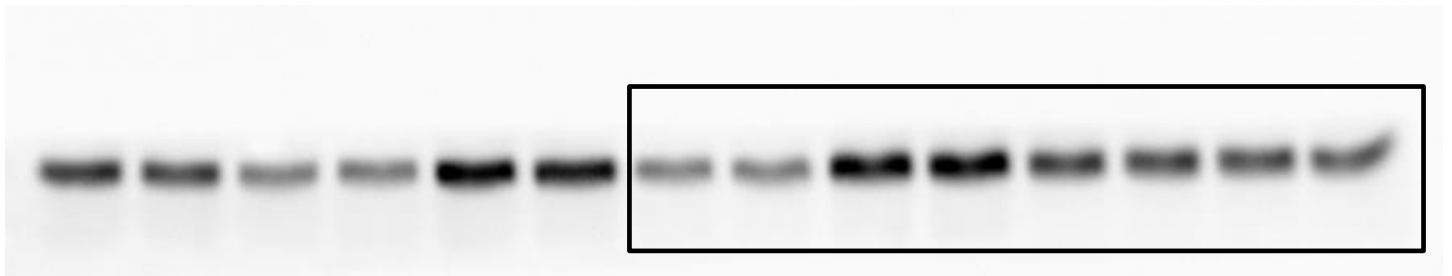


Supplemental Fig. S2

NF- κ B



GATA2



Histone H3.1

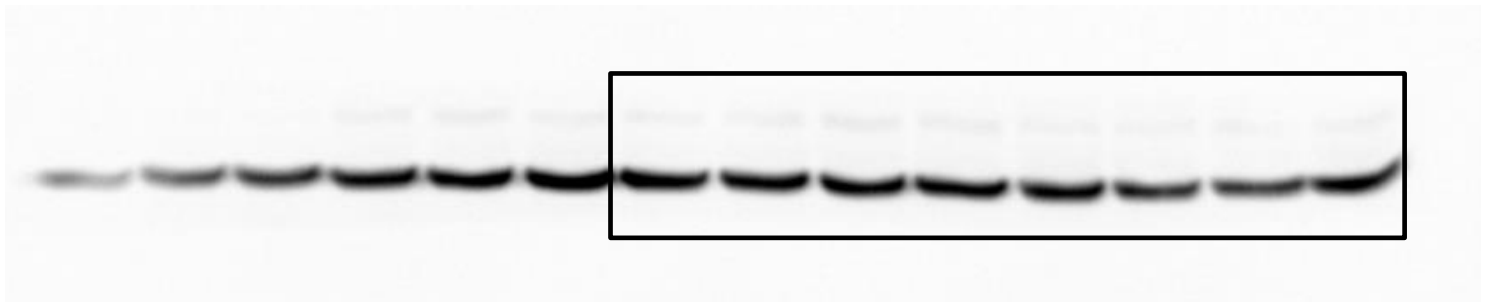


Fig. 2A

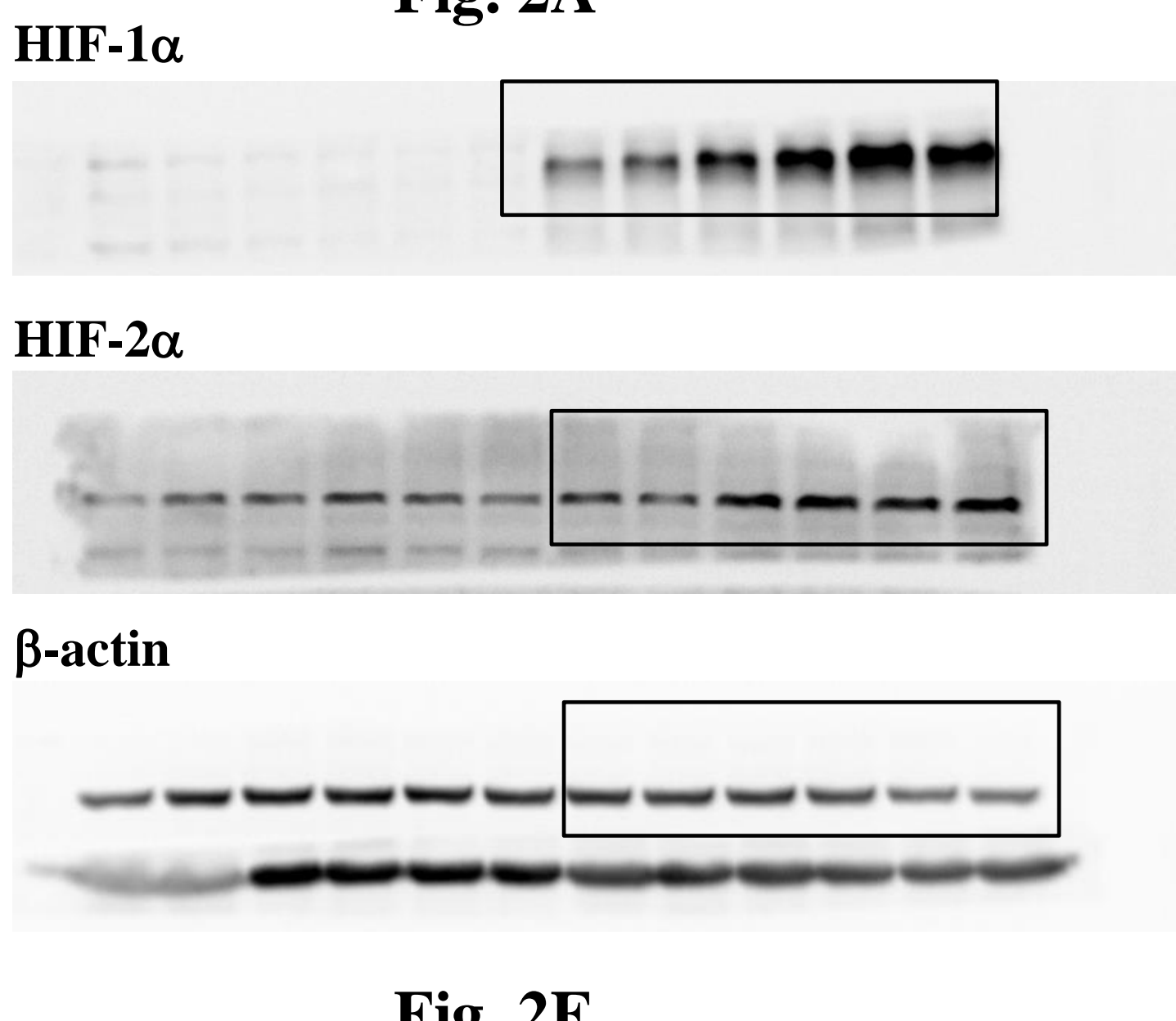


Fig. 2E

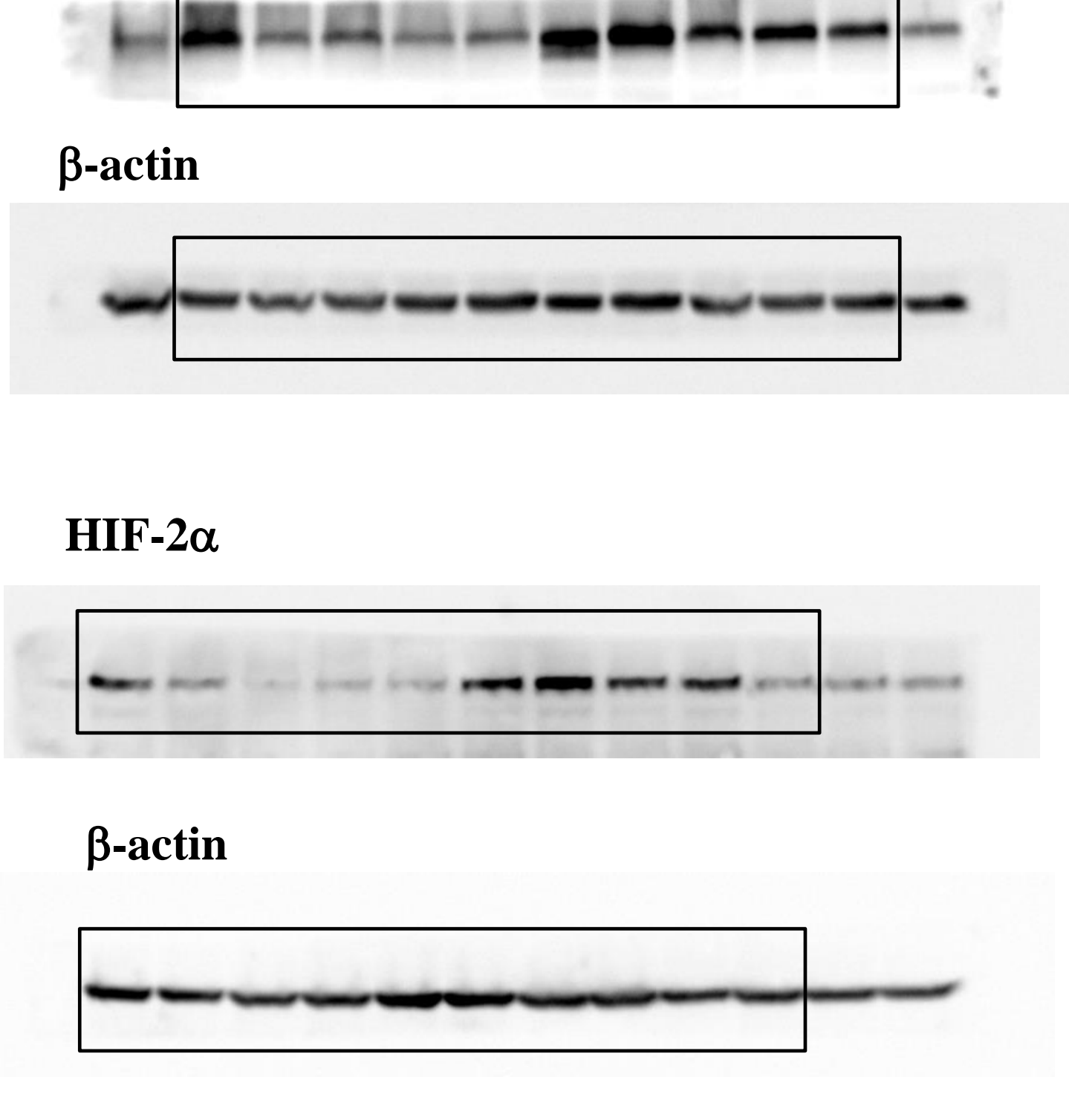


Fig. 3A

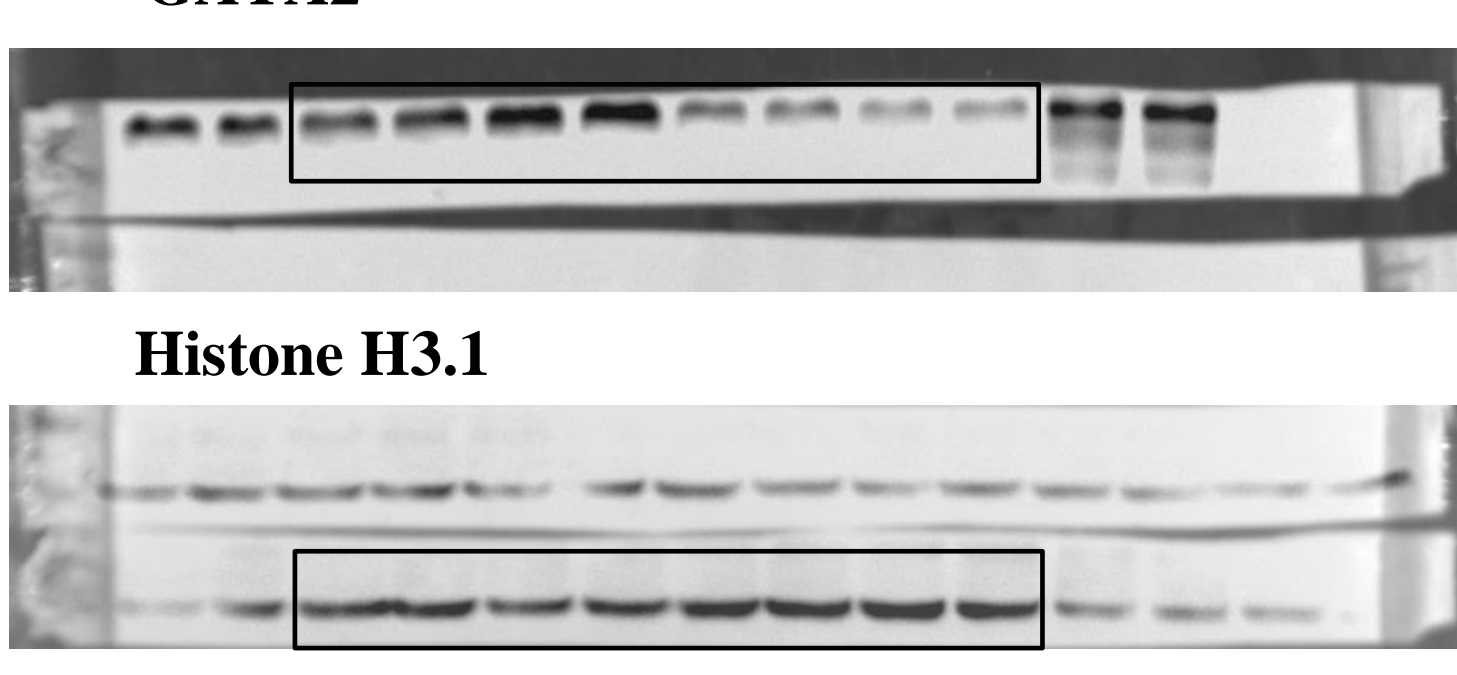


Fig. 3D

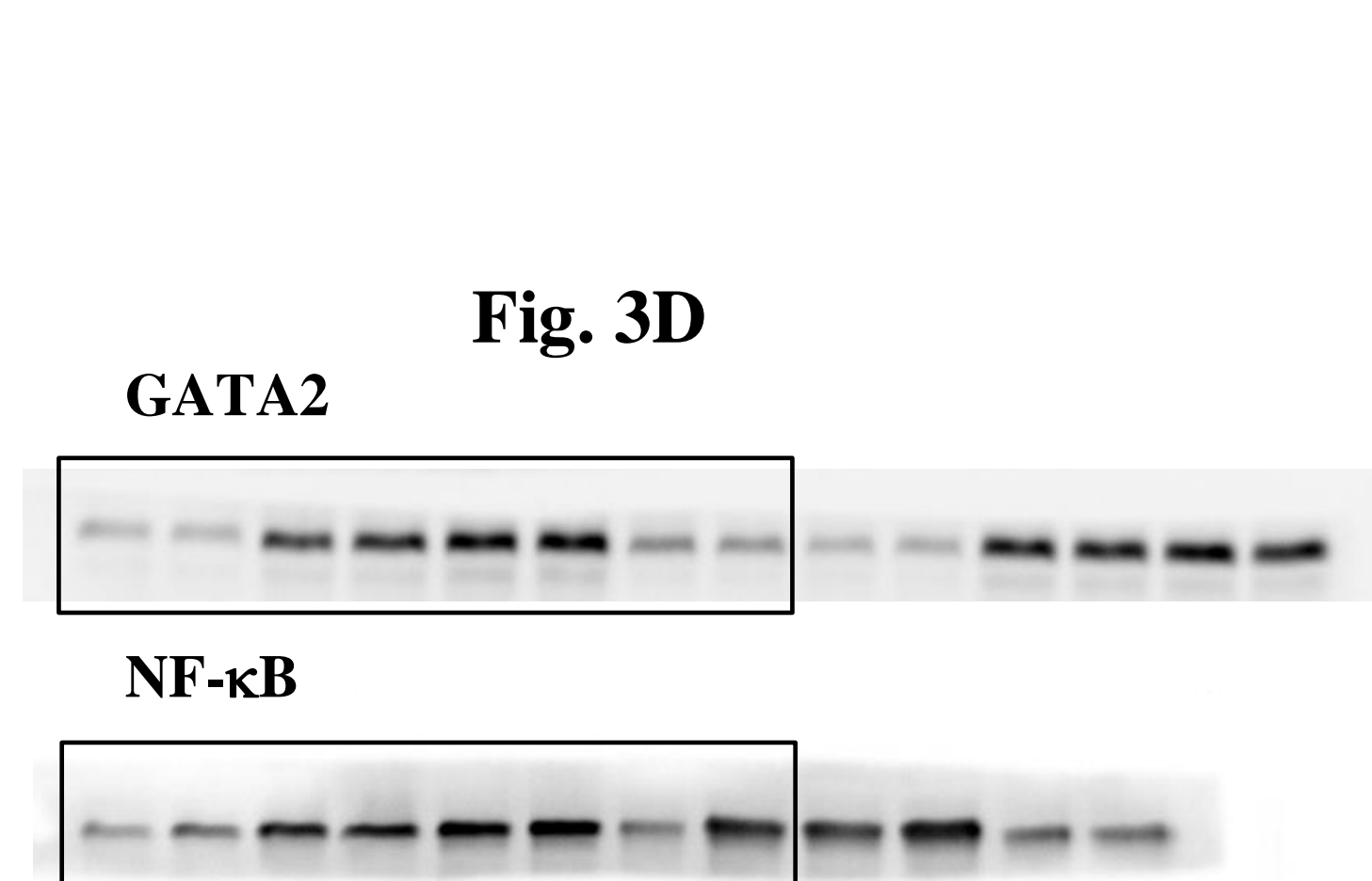


Fig 6.D

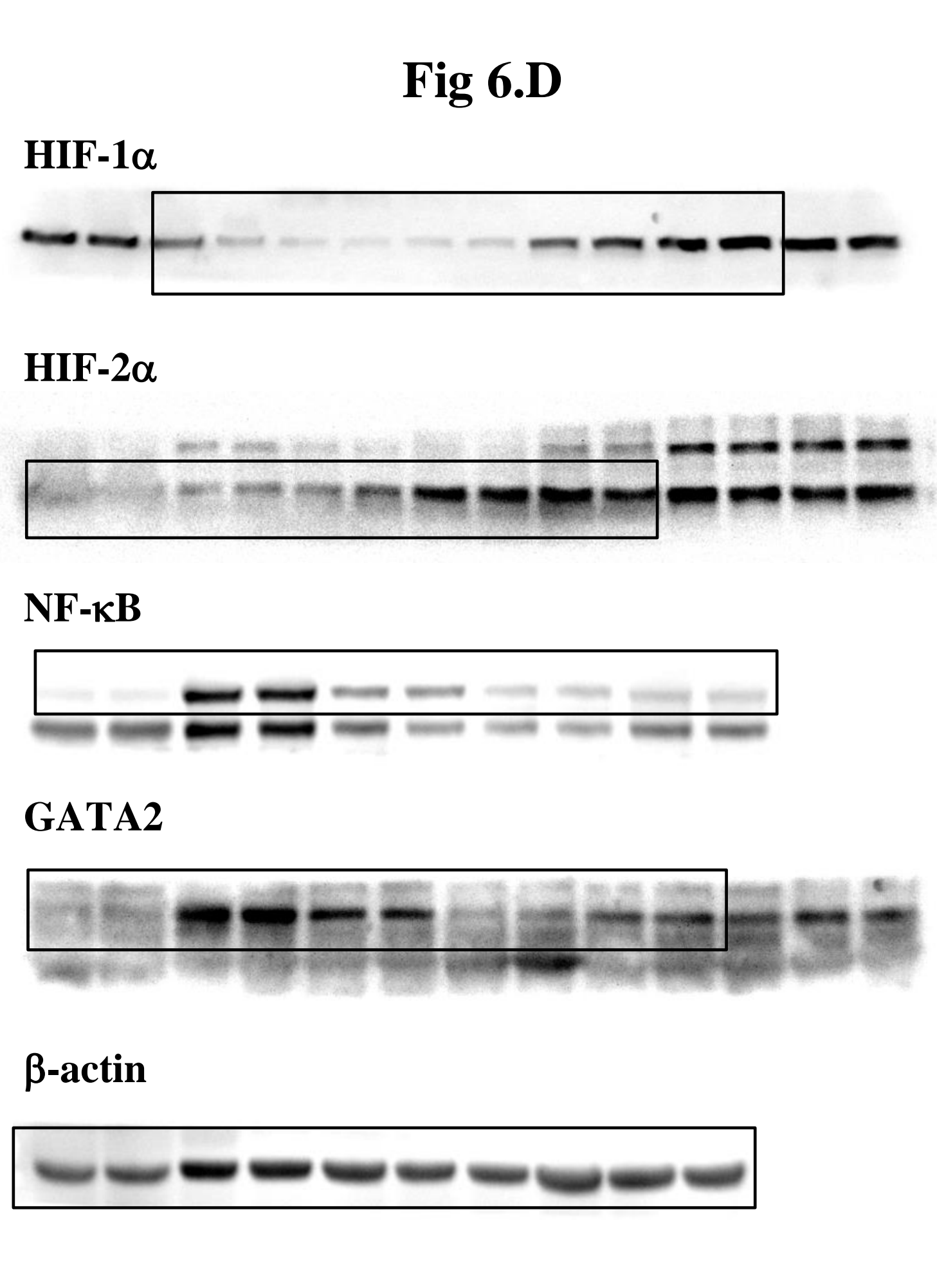


Fig 6.E

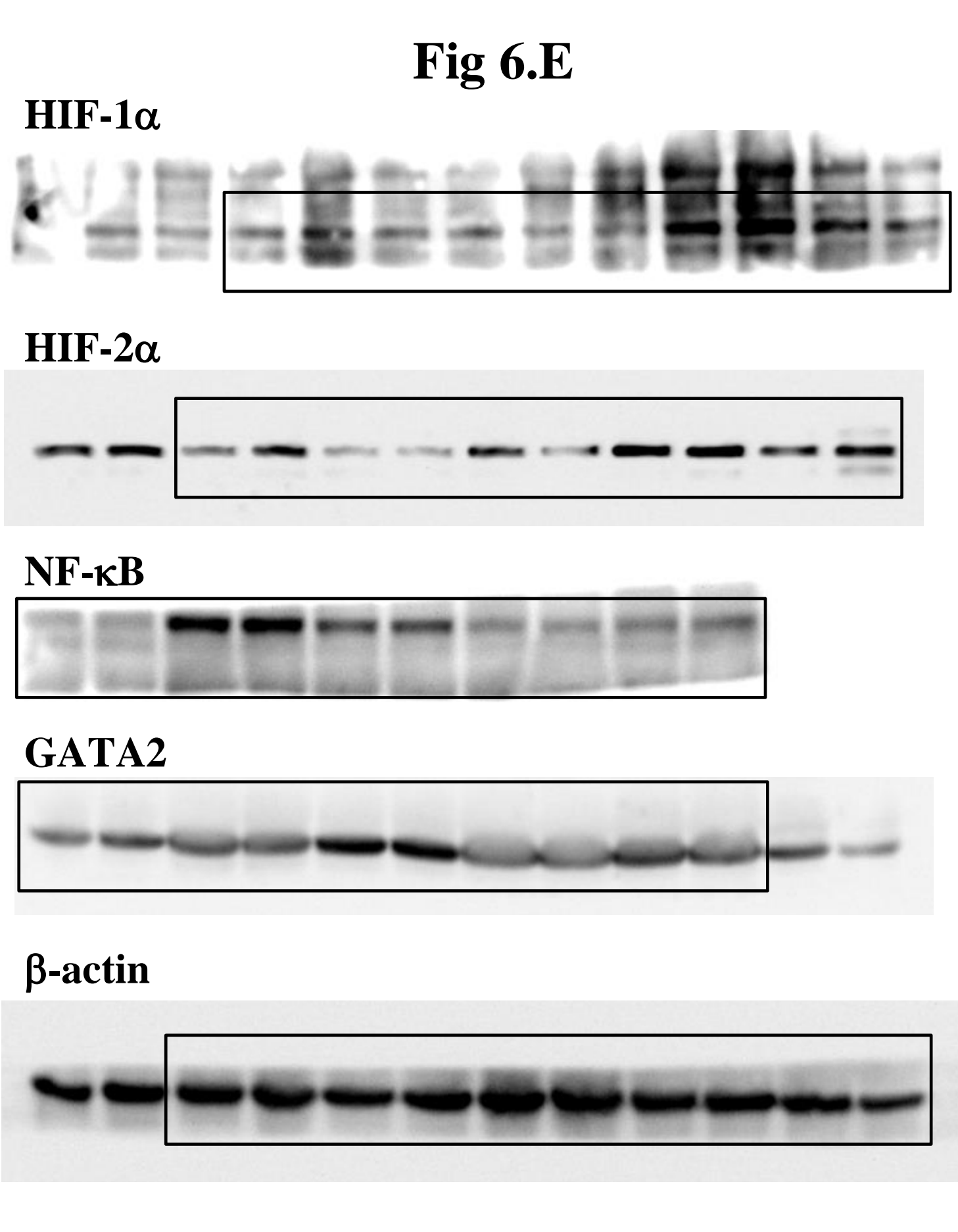


Fig. 7B

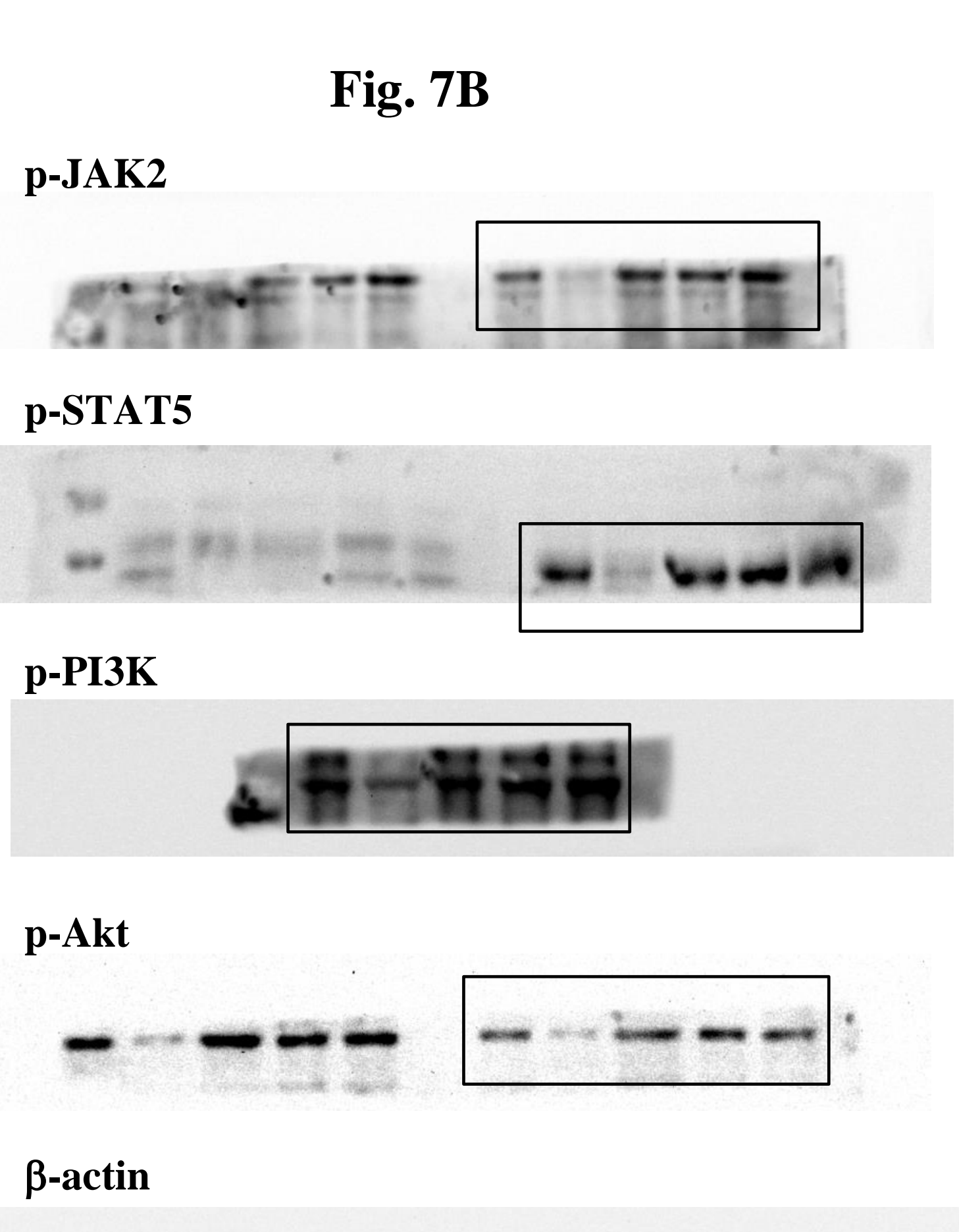
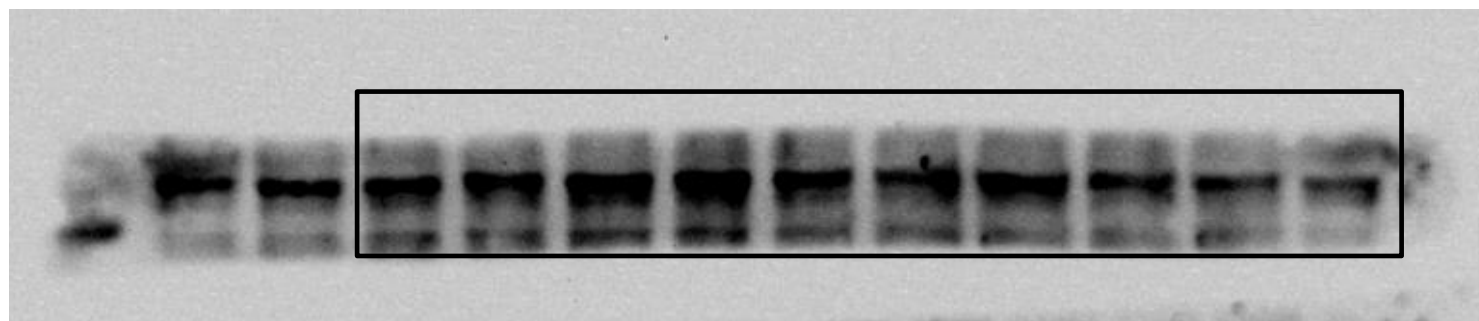


Fig 8.D

p-STAT3



p-SMAD1/5/8



β -actin

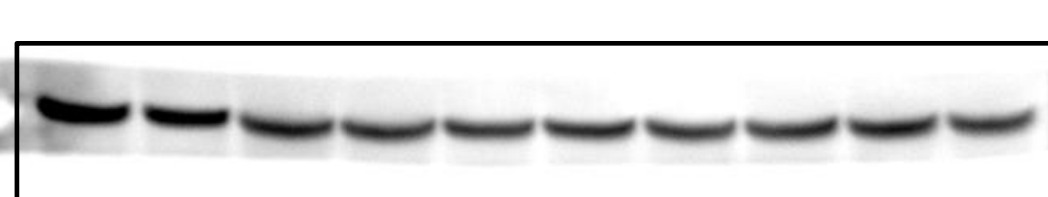
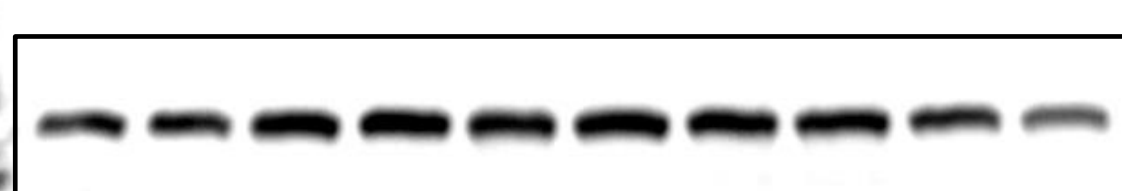


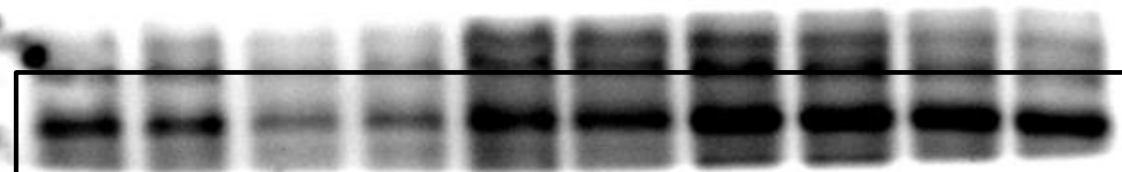
Fig 8.F

Spleen

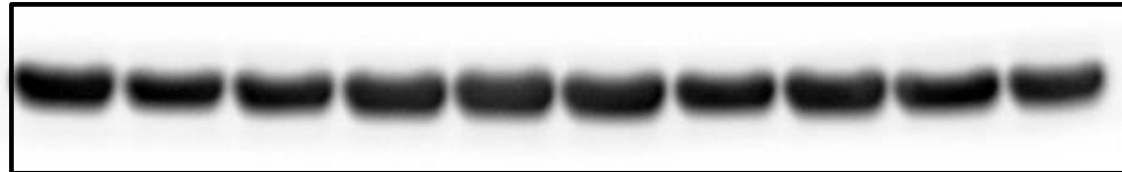
ferritin



ferroportin

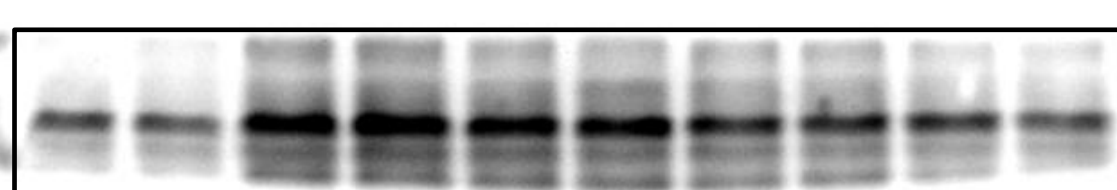


β -actin

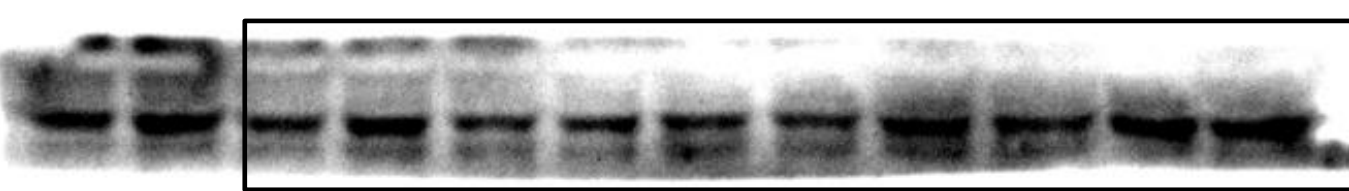


Liver

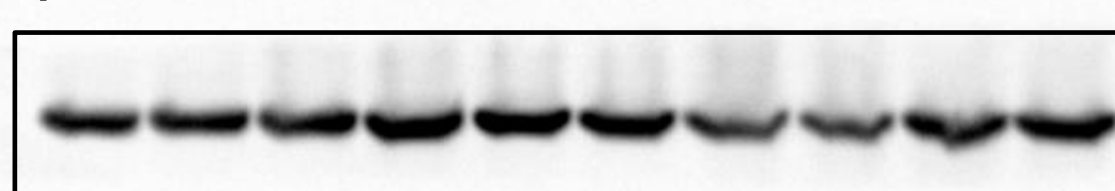
ferritin



ferroportin

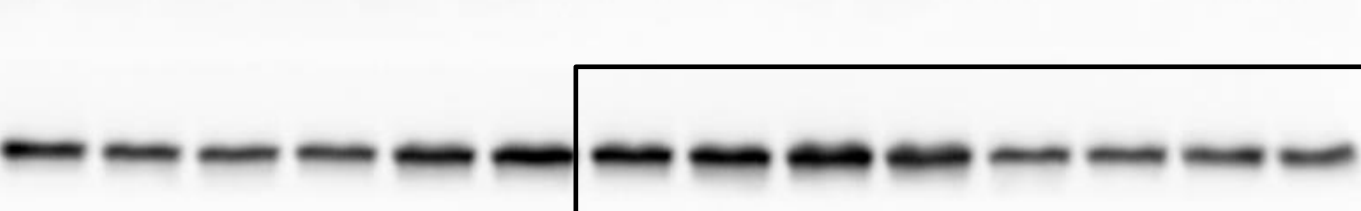


β -actin



Supplemental Fig. S2

NF- κ B



GATA2



Histone H3.1

