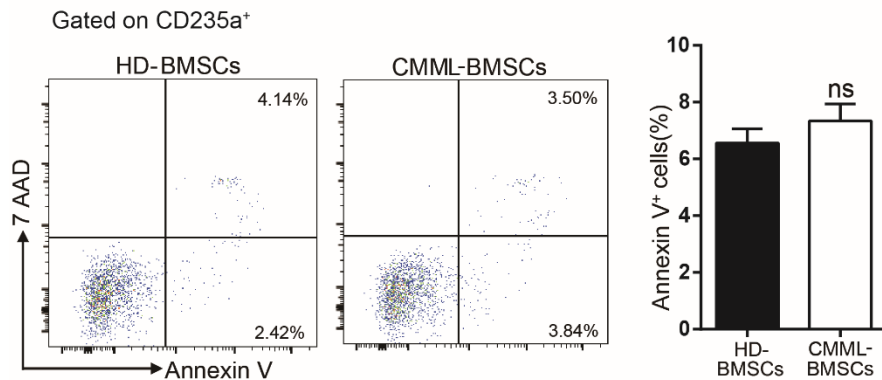
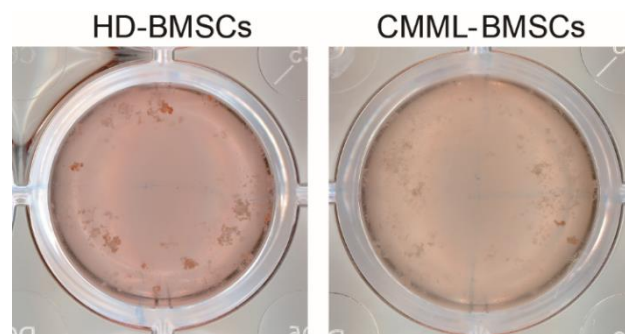


## Supplementary information



**Figure S1.**

Apoptosis analysis (Annexin V/7AAD staining) on CD235a<sup>+</sup> cells derived from CB CD34<sup>+</sup> cells after 3 days co-culture with HD-BMSCs or CMML-BMSCs. Data are presented as the mean  $\pm$  SEM (n=5), ns, not significant.



**Figure S2.**

Representative photographs of the colonies of cells after 3 days co-culture of CB CD34<sup>+</sup> cells with HD-BMSCs or CMML-BMSCs followed by 14 days culture on methylcellulose.

**Table S1. Clinical information of CMML patients**

Patients	Gender	Diagnosis	Age at diagnosis	CPSS-P
M6	M	CMML	66	intermediate-2
M73	F	CMML	57	High
M97	M	CMML	62	intermediate-1
M144	M	CMML	72	intermediate-1
M260	M	CMML	78	High
M277	M	CMML	87	intermediate-1
M288	M	CMML	81	intermediate-2
M340	F	CMML	63	low
M347	M	CMML	29	intermediate-1
M368	M	CMML	61	intermediate-2
M429	F	CMML	57	intermediate-2
M432	M	CMML	42	intermediate-1
M479	M	CMML	75	intermediate-2

\* Modified CMML-specific prognostic scoring system including platelet count (CPSS-P)