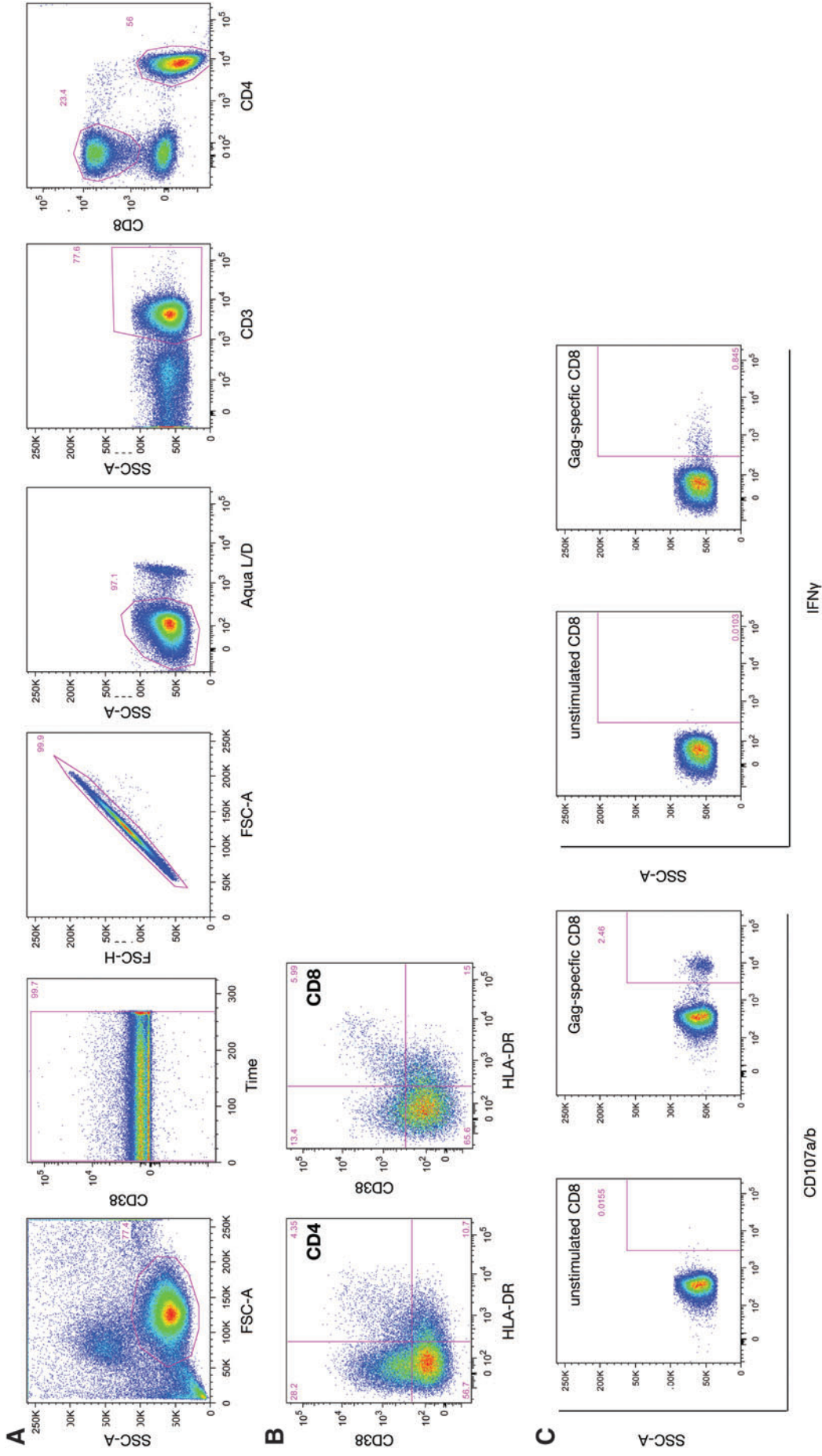


Supplementary Data



SUPPLEMENTARY FIG. S1. (A) Gating strategy to identify CD4⁺ and CD8⁺ T cells. (B) Activated CD4⁺ and CD8⁺ T cells were then identified by the expression of HLA-DR and CD38. (C) The frequency of HIV-specific CD4⁺ and CD8⁺ T cells was determined by the expression of CD107a/b and IFN γ upon stimulation, here examples shown as the frequency of Gag-specific CD8⁺ T cells. Frequency of activated CD4⁺ and CD8⁺ T cells (B) and HIV-specific CD4⁺ and CD8⁺ T cells (C) was gated on total CD4⁺ and CD8⁺ T cells, respectively.