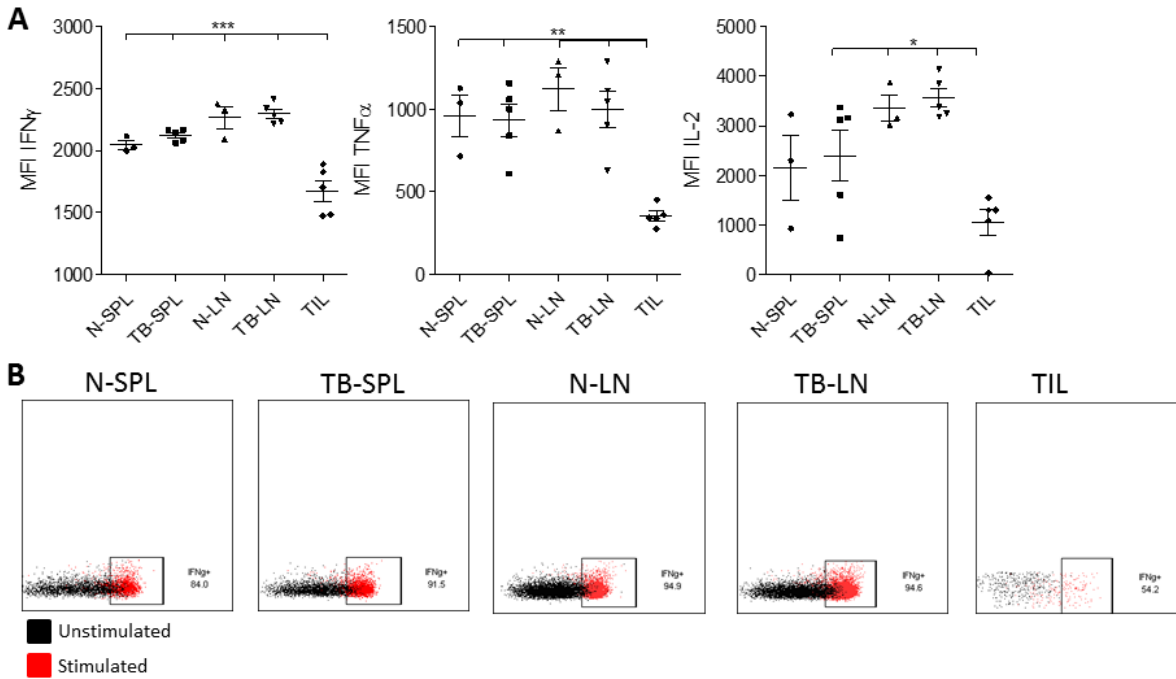


## Supplementary Figure 4



**Supplementary Figure 4: Cytokine production across immunologic compartments.** A. The capacity of CD8<sup>+</sup> T cells to produce IFN- $\gamma$ , IL-2, or TNF- $\alpha$  was compared across immunologic compartments. T cells were isolated from the spleens (SPL) and cervical lymph nodes (LN) from either CT2A tumor-bearing (TB) (n=5) or naïve (N) (n=3) mice, as well as from tumors of TB mice (TIL). \*p<0.05; \*\*p<0.01; \*\*\*p<0.0001 by one-way ANOVA followed by Tukey's post-hoc test. B. Representative dot plots are shown.