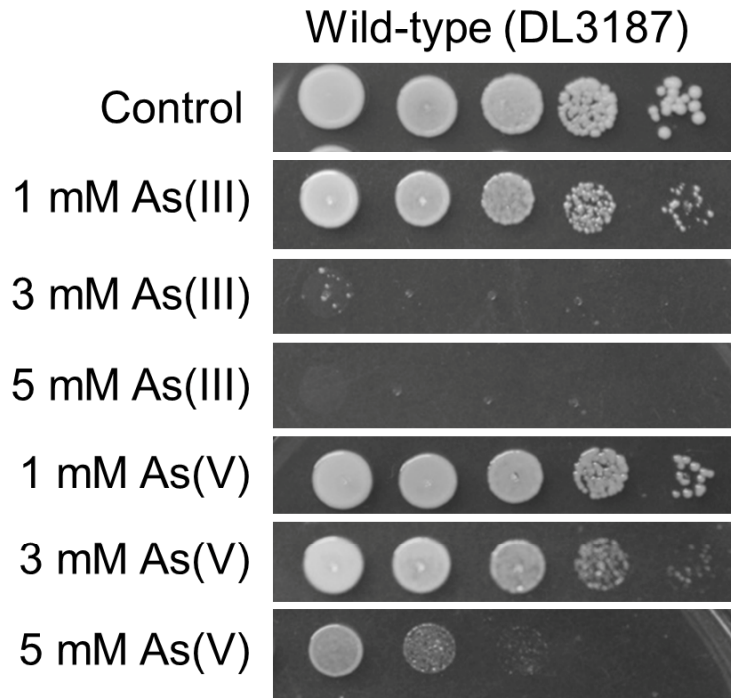


Supplemental Materials

Molecular Biology of the Cell

Leea and Levin



Supplemental Figure S1. Growth inhibition spot plate assays for As(III) and As(V). Wild-type (DL3187) cells were spotted at serial 10-fold dilutions (left to right) onto YPD plates containing the indicated concentration of As(III) or As(V) and incubated at 30°C for 2 days.