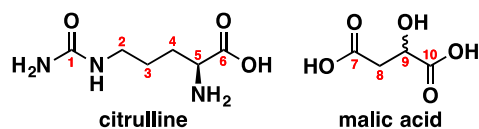


**Additional file 1. Integration values for all  $^1\text{H}$  chemical environments in citrulline malate, relative to the signal at H9.**



Sample	n	Citrulline				Malic Acid	
		H5 (3.65, 1H)	H2 (2.96, 2H)	H4 (1.65, 2H)	H3 (1.43, 2H)	H9 (4.37, 1H)	H8 (2.70, 2H)
A	1	1.6062	3.2810	3.2942	3.3043	1.000	2.0581
	2	1.4777	3.0538	3.0847	3.0771	1.000	2.0668
	3	1.7590	3.5838	3.5938	3.6102	1.000	2.1116
B	1	2.0075	3.9889	3.9974	3.9287	1.000	1.9094
	2	1.8801	3.7434	3.8589	3.8458	1.000	2.0575
	3	1.8700	3.7396	3.7775	3.8043	1.000	2.0650
C	1	1.4449	2.9574	2.9803	2.9340	1.000	1.9909
	2	1.5433	3.0975	3.1774	3.1635	1.000	2.0994
	3	1.5452	3.1401	3.2020	3.1722	1.000	2.0940
D	1	1.6930	3.4156	3.5606	3.4290	1.000	1.9620
	2	1.4904	2.9904	3.0342	3.0498	1.000	2.0823
	3	1.4699	2.9699	3.0594	3.0269	1.000	2.0451
E	1	1.1224	2.2566	2.2668	2.2460	1.000	1.9967
	2	1.1067	2.2098	2.2494	2.2632	1.000	2.0967
	3	1.1107	2.2159	2.2909	2.2559	1.000	2.0640

