

## Supplementary Information

### Effect of patterned polyacrylamide hydrogel on morphology and orientation of cultured NRVMs

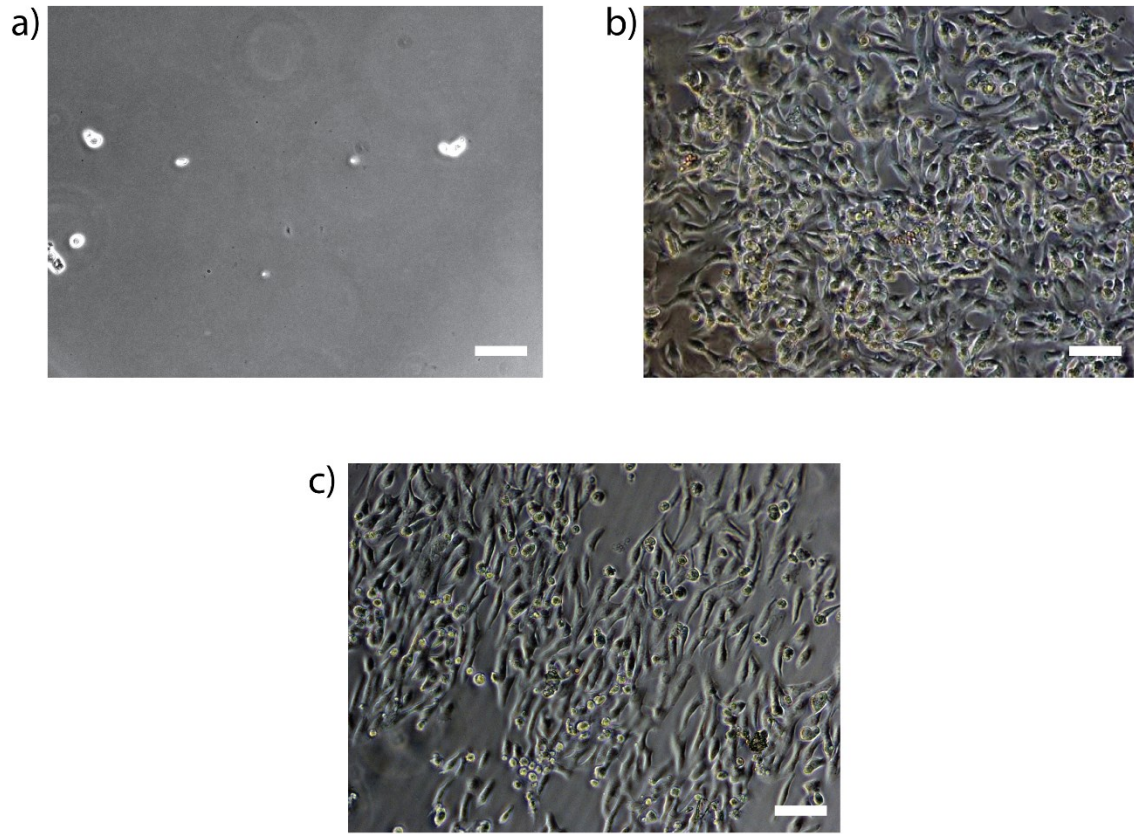
I. Sanzari<sup>a</sup>, E. J. Humphrey<sup>b</sup>, F. Dinelli<sup>c</sup>, C. Terracciano<sup>b</sup>, T. Prodromakis<sup>a</sup>

<sup>a</sup>University of Southampton, Nanoelectronics & Nanotechnology Research Group, Electronics and Computer Science, Southampton, SO17 1BJ, UK

<sup>b</sup>National Heart and Lung Institute, Imperial College London, London, UK

<sup>c</sup>Consiglio Nazionale delle Ricerche (CNR), INO UOS 'A. Gozzini' Area della Ricerca di Pisa - S. Cataldo, via Moruzzi 1, I-56124 Pisa, Italy

E-mail: [ilaria.sanzari@soton.ac.uk](mailto:ilaria.sanzari@soton.ac.uk), [e.humphrey13@imperial.ac.uk](mailto:e.humphrey13@imperial.ac.uk), [franco.dinelli@ino.it](mailto:franco.dinelli@ino.it), [c.terracciano@imperial.ac.uk](mailto:c.terracciano@imperial.ac.uk), [T.Prodromakis@soton.ac.uk](mailto:T.Prodromakis@soton.ac.uk)



**Figure S1. Bright field images (4x magnification) of cell cultures on polyacrylamide (PAm) hydrogel samples with and without collagen patterns.** In (a) a pristine sample does not promote cell adhesion, demonstrating that PAm is not biocompatible. In (b) cells adhere with a random distribution on a PAm sample uniformly treated with collagen. In (c) cells align along the direction of collagen patterns. (White scale bar: 50 μm).