

Cardiomyocytes Derived from Human ^{Cardiopoietic} Amniotic Fluids

Angela Di Baldassarre¹, Maria A D'Amico¹, Pascal Izzicupo¹, Giulia Gaggi¹, Simone Guarnieri², Maria A Marigliò², Ivana Antonucci³, Barbara Corneo⁴, Dario Sirabella⁴, Liborio Suppia³ and Barbara Ghinassi^{1*}

¹Department of Medicine and Aging Sciences, University "G. d'Annunzio" of Chieti-Pescara, Via dei Vestini 31, 66100, Chieti, Italy

²Department of Neuroscience, Imaging e Clinical Sciences, University "G. d'Annunzio" of Chieti-Pescara, Via dei Vestini 31, 66100, Chieti, Italy

³Department of Department of Psychological, Humanities and Territorial Sciences, University "G. d'Annunzio" of Chieti-Pescara, Via dei Vestini 31, 66100, Chieti, Italy

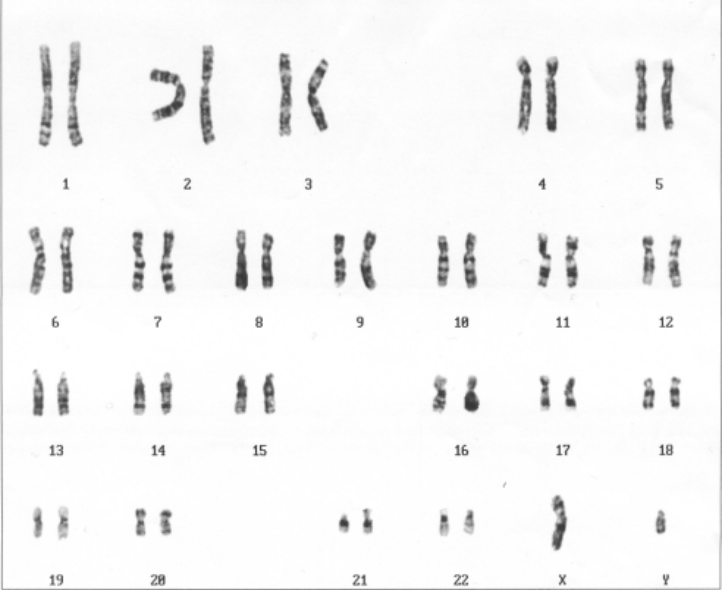
⁴Stem Cell Core Facility, Columbia University Medical Center, 650 W. 168th St., 10032 New York, NY, USA

Supplementary Table S1. Phenotypic characterization of hAF cells samples

AF Sample	CD29	CD73	CD44	CD34	CD45	CD31	Tra1-60	SSEA4	OCT4	CD90
#1	++	++	++	-	-	-	-/+	++	++	++
#2	++	++	++	-	-	-	-	-/+	-/+	++
#3	++	++	++	-	-	-	-	-/+	-/+	-/+
#4	++	++	++	-	-	-	-	++	+	++
#5	++	++	++	-	-	-	-	++	++	+
#6	++	++	++	-	-	-	-	-	-/+	-
#7	++	++	++	-	-	-	-	-/+	-/+	+
#8	++	++	++	-	-	-	-	-/+	-/+	+
#9	++	++	++	-	-	-	-	++	+	++
#10	++	++	++	-	-	-	-	++	++	+
#11	++	++	++	-	-	-	-	+	-	-/+
#12	++	++	++	-	-	-	-	-/+	-/+	++
#13	++	++	++	-	-	-	-	-/+	-/+	-/+
#14	++	++	++	-	-	-	-	++	+	++
#15	++	++	++	-	-	-	-/+	++	++	++

Legend: - (<1%) not expressed; -/+ (1-10%) slightly expressed; +(10-50%) expressed; ++ (>50%) strongly expressed

Supplemental Figure S1: Normal diploid male Caryotype (46, XY). The figure is rappresentative of all 15 samples.



Supplemental Figure S2: Densitometry of the Western Blot analyses. Data are expressed as the mean \pm SD of the optical density percentage relative to the positive control (heart lysate). * indicates value of CM-like cells statistically different ($p < 0.05$) from *Cardiopoietic* AF cells.

