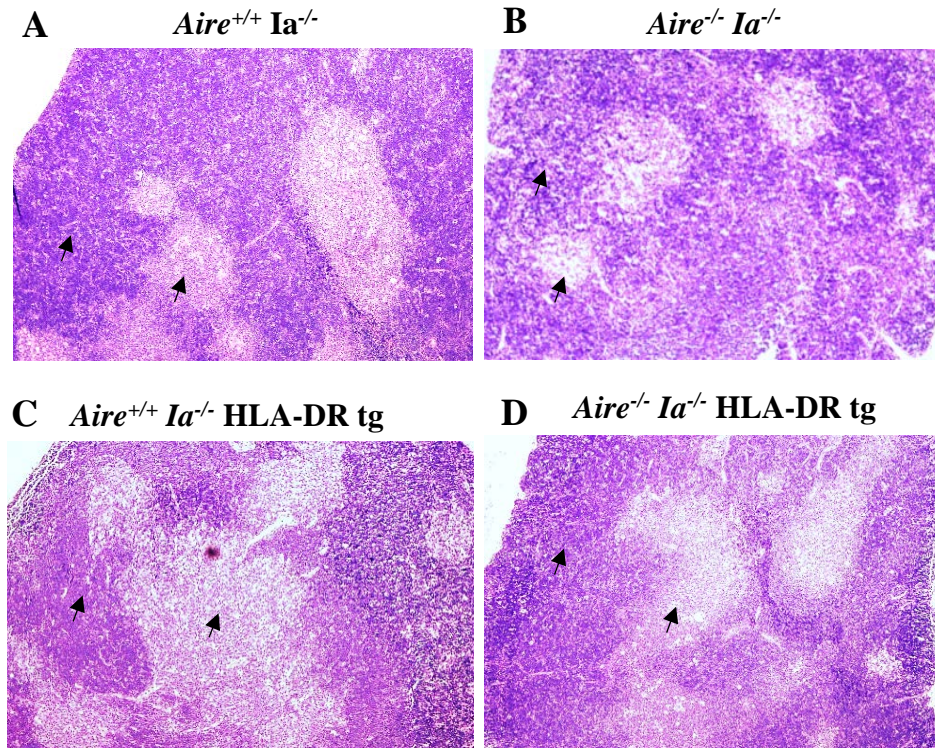


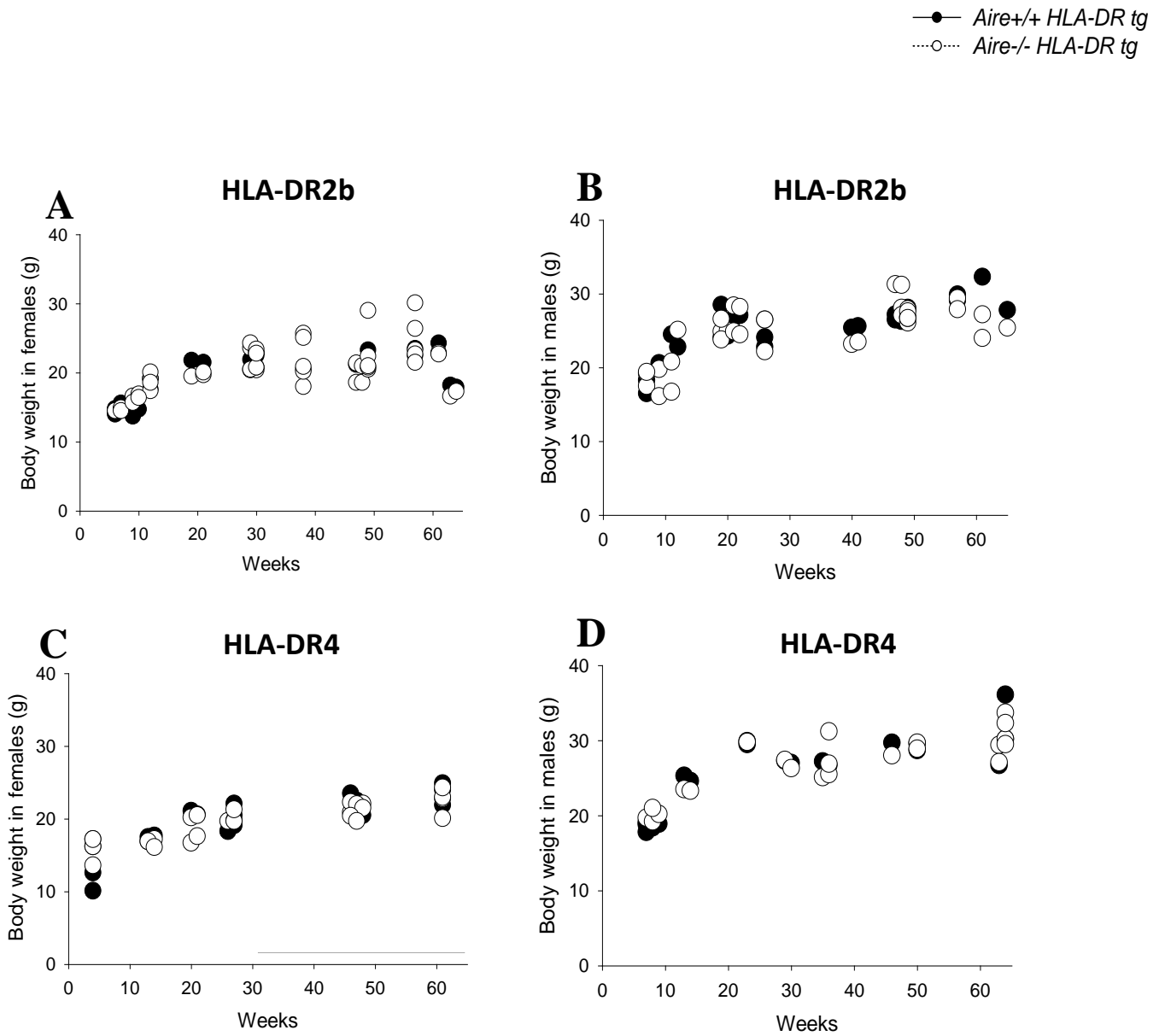
SUPPLEMENTAL MATERIALS:

SUPPLEMENTAL FIGURE 1.



SUPPLEMENTAL FIGURE 1. Thymus histology of *Aire*^{-/-} and *Aire*^{+/+} *Ia*^{-/-} and/or HLA-DR2 tg mice. H&E staining for thymus of (A) *Aire*^{+/+} *Ia*^{-/-}, (B) *Aire*^{-/-} *Ia*^{-/-} and (C) *Aire*^{+/+} *Ia*^{-/-} HLA-DR tg, (D) *Aire*^{-/-} *Ia*^{-/-} HLA-DR tg mice. Arrows indicate thymic cortex and medulla, respectively.

SUPPLEMENTAL FIGURE 2.



SUPPLEMENTAL FIGURE 2. Comparison of body weight between *Aire*^{-/-} and *Aire*^{+/+} HLA-DR2b or HLA-DR4 mice. Shown are the body weights of (A) female and (B) male *Aire*^{-/-} vs *Aire*^{+/+} HLA-DR2b tg mice at different ages. Shown in (C) are body weights of female and (D) male *Aire*^{-/-} vs *Aire*^{+/+} HLA-DR4 tg mice at different ages. Symbols represent individual mice. No significant differences were observed (t-test).