

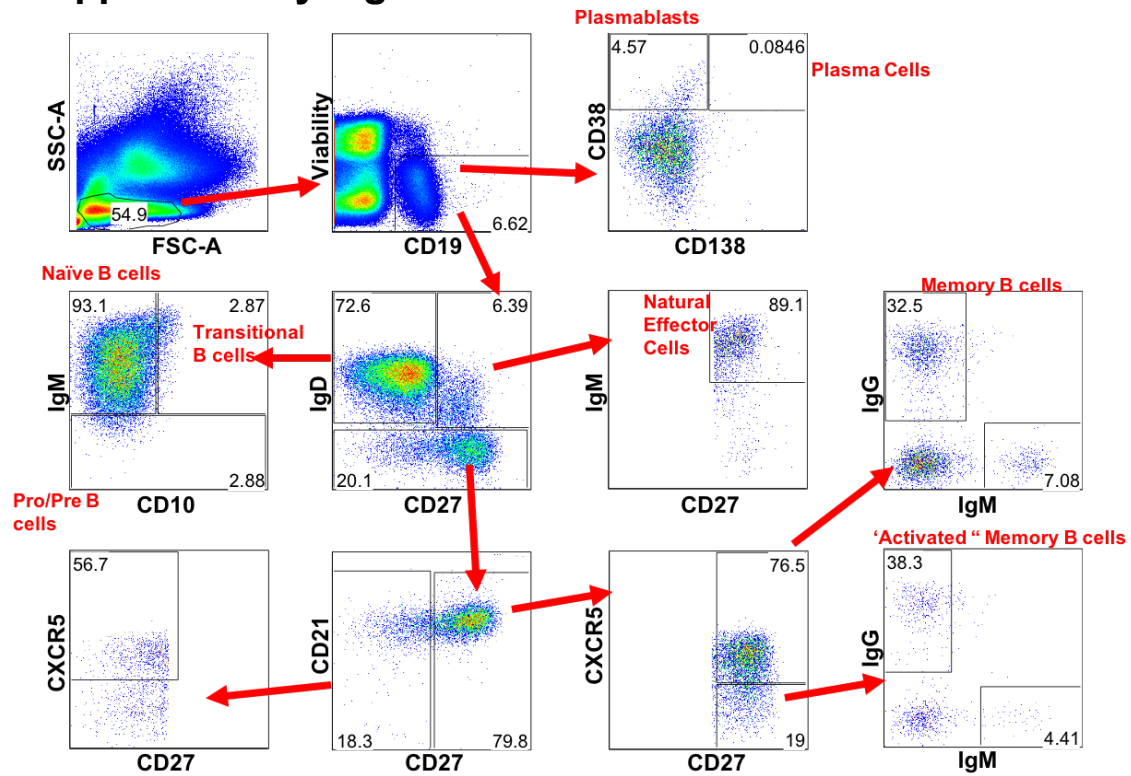
Engineering of Primary Human B cells with CRISPR/Cas9 Targeted Nuclease

**Matthew J. Johnson¹²³, Kanut Laoharawee¹²³, Walker S. Lahr¹²³, Beau R. Webber¹²³,
Branden S. Moriarity^{123*}**

¹Department of Pediatrics, University of Minnesota, Minneapolis MN 55455, USA; ²Center for Genomic Engineering, University of Minnesota, Minneapolis MN 55455, USA; ³Masonic Cancer Center, University of Minnesota, Minneapolis MN 55455

*Corresponding Author: Branden S. Moriarity, Cancer and Cardiovascular Research Building, 2231 6th St. SE, University of Minnesota, Minneapolis, MN 55455, USA. Ph: +612 625 2226; Email: mori0164@umn.edu

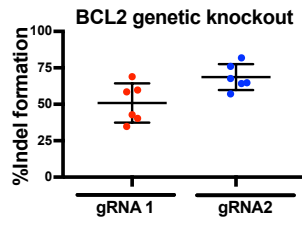
Supplementary Figure 1



B cell subsets in the peripheral blood

Gating scheme used for the identification of B cell subsets by flow cytometry.

Supplementary Figure 2



Knockout of BCL2

Percent indel formation with two different gRNAs targeting BCL2.

Supplementary Table 1

| Specificity | Fluorophore | Clone | Vendor |
|-------------|---------------|----------|---------------|
| CD10 | BV711 | HI10a | Biologend |
| CD19 | BUV395 | SJ25C1 | BD Horizon |
| CD20 | PE/Dazzle 594 | HIT2 | Biologend |
| CD21 | BV650 | B-ly4 | BD OptiBuild |
| CD27 | BV605 | O323 | Biologend |
| CD38 | BUV496 | HIT2 | BD Horizon |
| CD138 | BV510 | MI15 | Biologend |
| CXCR5 | BV421 | RF8B2 | BD Horizon |
| IgD | PE | IA6-2 | BD Pharmingen |
| IgG | APC | M1310G05 | Biologend |
| IgM | PE-Cy7 | MHM-88 | Biologend |

Flow cytometry antibodies

List of antibodies used for flow cytometry in this study

Unmodified, full-sized images of gels used to construct Figures 5C and 6C.

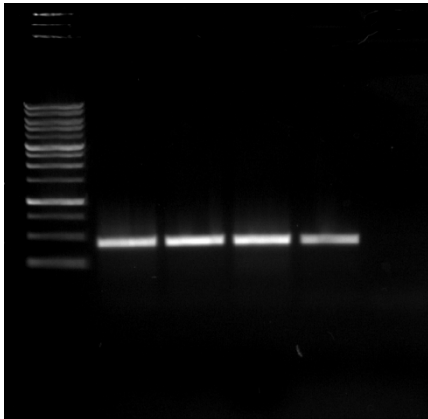


Figure 5C left panel

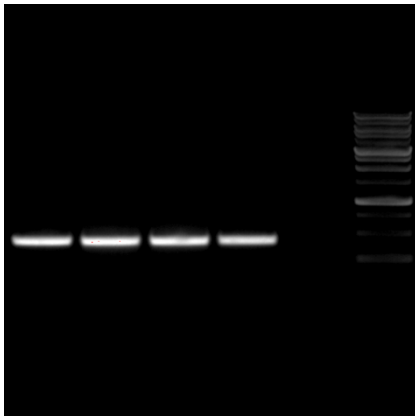


Figure 5C central panel

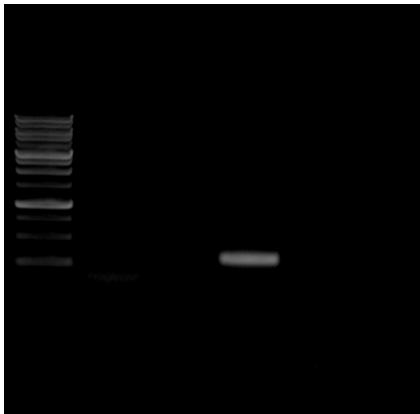


Figure 5C right panel

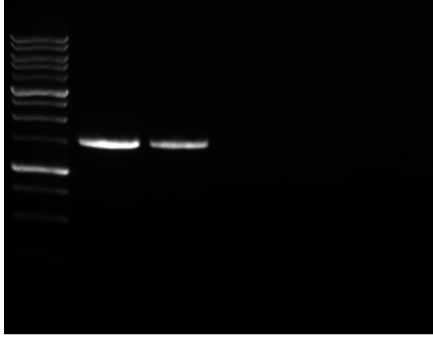


Figure 6C