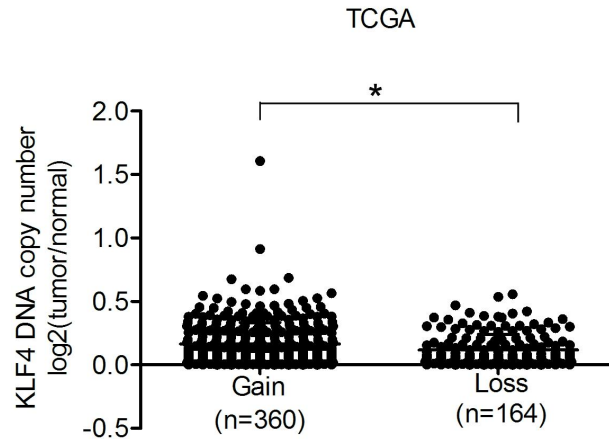
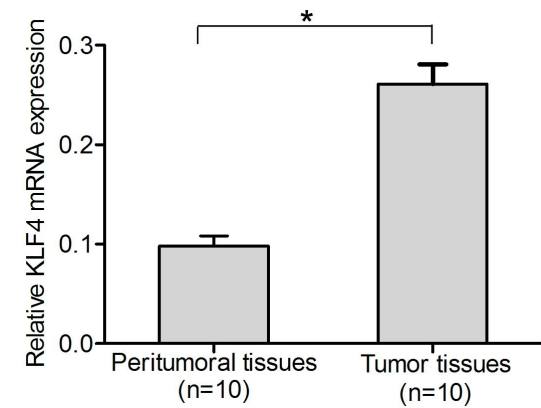
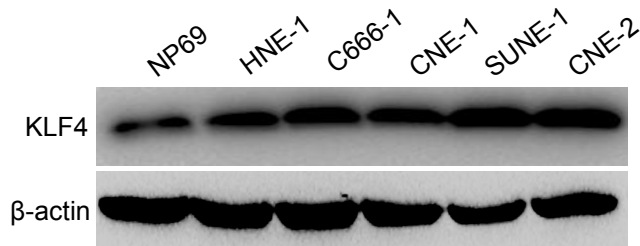


**A****B****C**

### Supplementary Figure 1 KLF4 expression is prognostic for clinical nasopharyngeal carcinoma

(A) Expression levels of KLF4 DNA copy number are significantly higher in head and neck samples compared with normal tissues from a TCGA data sets. (B) KLF4 expression in clinical nasopharyngeal tissues and peritumoral tissues specimens. (C) Western blotting analysis of KLF4 protein expression in nasopharyngeal carcinoma cells and normal nasopharyngeal cells. Actin was used as a control.