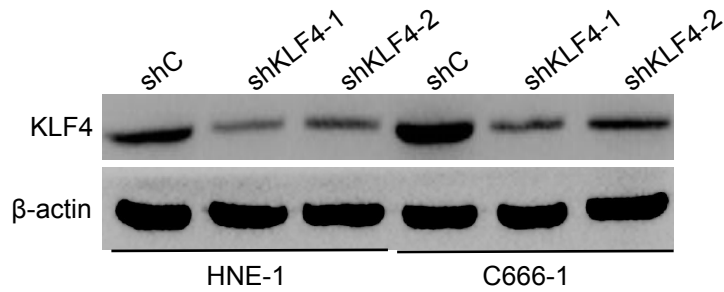
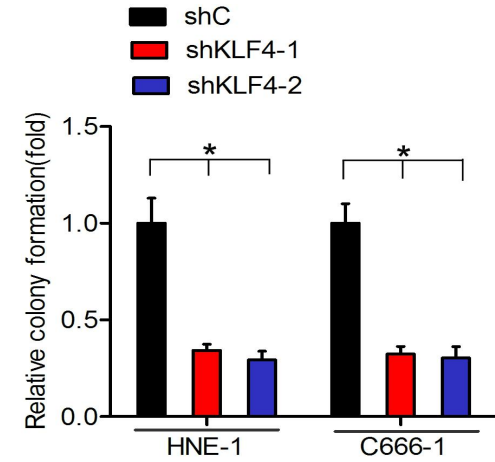
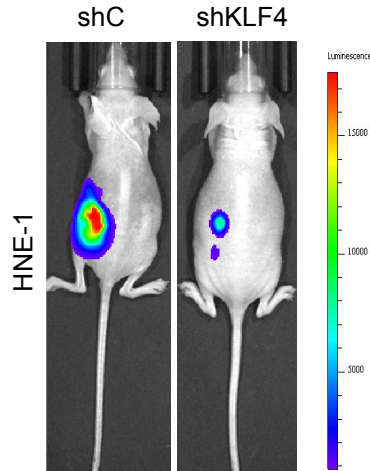
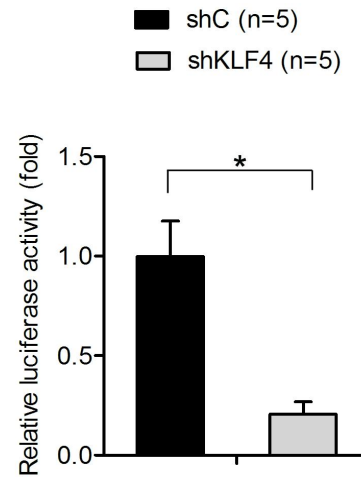


A**B****C****D**

Supplementary Figure 2 Depletion of KLF4 inhibits nasopharyngeal carcinoma growth

(A) Western blot analysis of KLF4 knockdown in HNE-1 and C666-1 cells. (B) Effects of KLF4 knockdown on nasopharyngeal carcinoma cell colony formation. (C) Representative bioluminescence images of KLF4 knockdown-inhibited HNE-1 subcutaneous tumour generation. (D) Quantification of the bioluminescence activity in C.