

## Supplementary Materials for

### **Fake legal logging in the Brazilian Amazon**

Pedro H. S. Brancalion\*, Danilo R. A. de Almeida, Edson Vidal, Paulo G. Molin,  
Vanessa E. Sontag, Saulo E. X. F. Souza, Mark D. Schulze

\*Corresponding author. Email: pedrob@usp.br

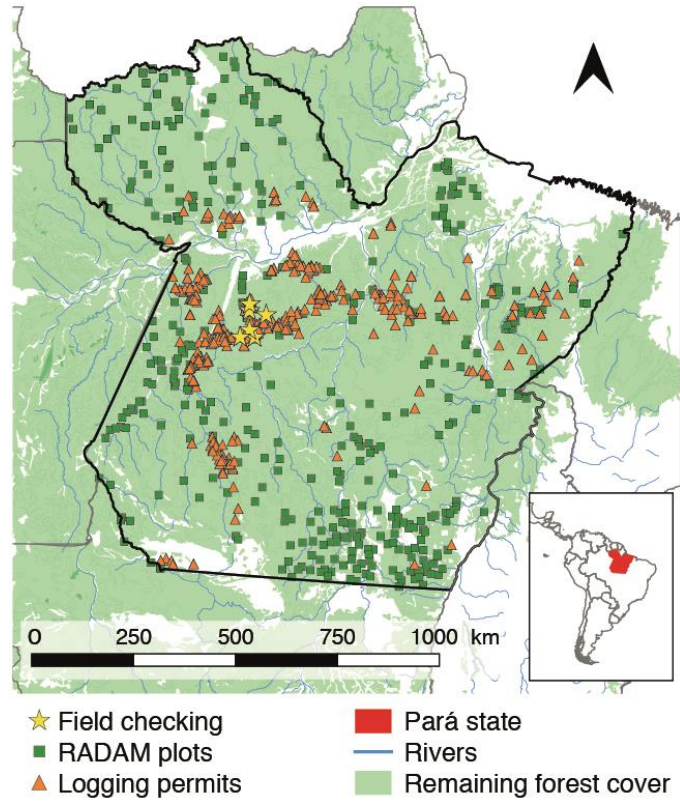
Published 15 August 2018, *Sci. Adv.* **4**, eaat1192 (2018)  
DOI: 10.1126/sciadv.aat1192

#### **This PDF file includes:**

Fig. S1. Study sites in Pará state, eastern Amazon, Brazil.

Table S1. Commercial timber species used in the study and their associated characteristics.

Supplementary figure and table



**Fig. S1. Study sites in Pará state, eastern Amazon, Brazil.**

**Table S1. Commercial timber species used in the study and their associated characteristics.**

Commercial timber species - common names in logging permits	Commercial timber species - scientific names in logging permits	Scientific names associated with commercial timber species listed in logging permits	"standing trees" timber price (US\$ m <sup>-3</sup> )	Logging permits with this timber species	Timber volume in logging permits (m <sup>3</sup> )	Trees in logging permits	Value of licensed timber (US\$)
Ipê	<i>Tabebuia</i> spp.	<i>Handroanthus impetiginosus</i> (Mart. ex DC.) Standl.; <i>H. serratifolius</i> (Vahl) G.Nicholson; <i>Handroanthus</i> sp.	30.16	366	344,737	45,100	10,396,818
Cumaru	<i>Dipteryx</i> spp.	<i>Dipteryx odorata</i> (Aubl.) Willd.; <i>D. speciosa</i> (Ducke) Ducke; <i>D. trifoliolata</i> (Ducke) Ducke	26.35	255	132,051	26,083	3,480,282
Jatobá	<i>Hymenaea courbaril</i>	<i>Hymenaea courbaril</i> L.	20.17	401	397,935	60,029	8,026,919
Maçaranduba	<i>Manilkara huberi</i>	<i>Manilkara huberi</i> (Ducke) Standl.	19.64	348	1,202,560	208,309	23,627,445
Itaúba	<i>Mezilaurus itauba</i>	<i>Mezilaurus itauba</i> (Meisn.) Taub. ex Mez	18.14	192	107,037	25,724	1,941,956
Sucupira	<i>Bowdichia</i> spp.	<i>Bowdichia virgilioides</i> Kunth; <i>B. nítida</i> Benth.; <i>Diploptropis purpurea</i> (Rich.) Amshoff	17.95	156	39,179	8,017	703,227
Faveira	<i>Piptadenia suaveolens</i>	<i>Piptadenia suaveolens</i> Griseb.	7.83	113	92,284	18,948	723,037
Cupiúba	<i>Goupia glabra</i>	<i>Goupia glabra</i> Aubl.	6.31	263	338,022	61,769	2,134,370
Piquiá	<i>Caryocar</i> spp.	<i>Caryocar microcarpum</i> Ducke; <i>C. villosum</i> (Aubl.)	5.73	244	152,391	20,432	873,708

		Pers.; <i>C. glabrum</i> (Aubl.)					
		Pers.					
Tanimbuca	<i>Terminalia amazonia</i>	<i>Terminalia amazonia</i> (J.F.Gmel.) Exell	5.72	51	21,060	3,736	120,543
Amesclão	<i>Trattinnickia</i> spp.	<i>Trattinnickia rhoifolia</i> Willd.; <i>T. burserifolia</i> Mart.	5.32	68	16,577	4,535	88,253

---