

**YMTHE, Volume 26**

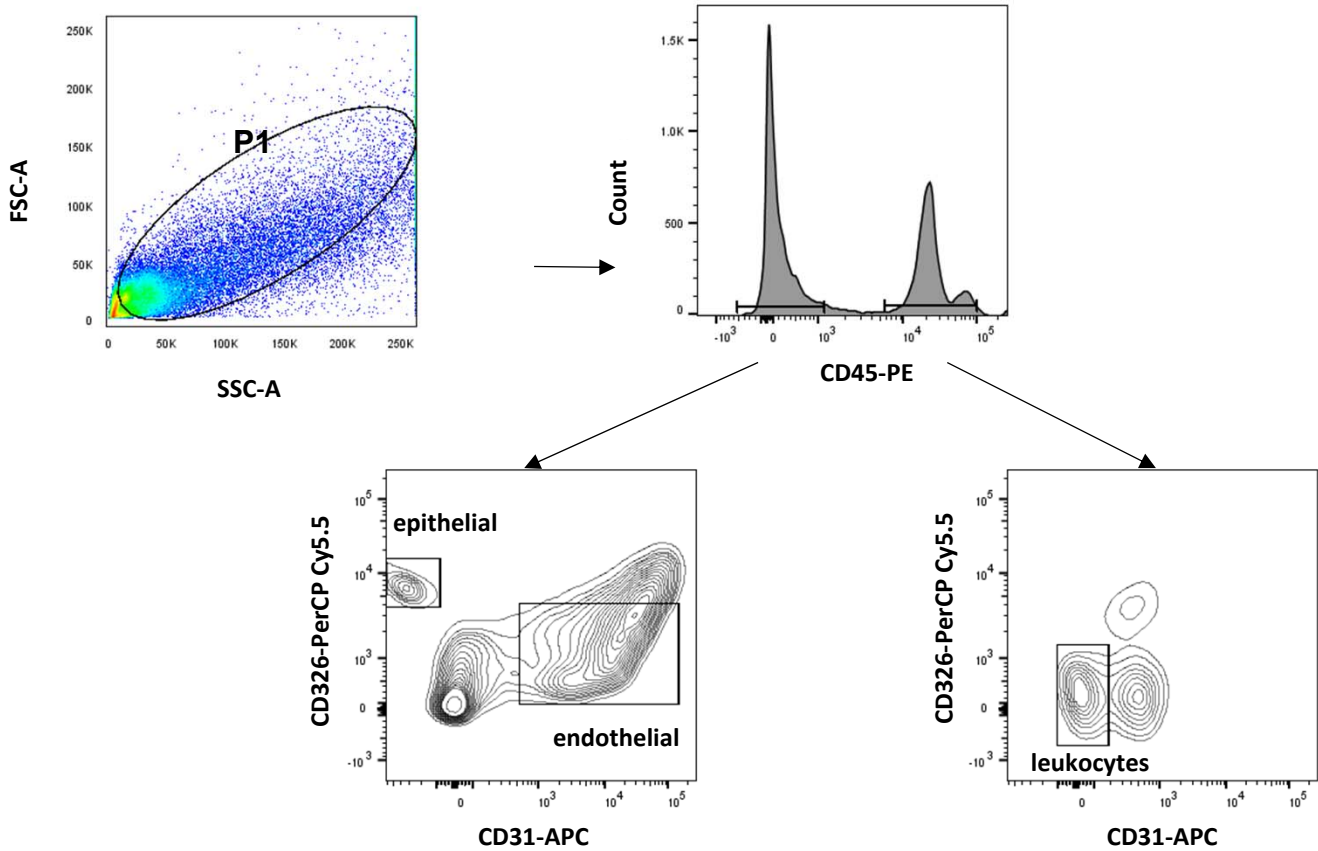
**Supplemental Information**

**EMAPII Monoclonal Antibody Ameliorates**

**Influenza A Virus-Induced Lung Injury**

**Hongyan Lu, Sarvesh Chelvanambi, Christophe Poirier, Jacob Saliba, Keith L. March, Matthias Clauss, and Natalia V. Bogatcheva**

## Supplemental Figure 1



**Supplemental Fig 1.** Gating strategy to identify epithelial, endothelial, and hematopoietic lineage cells in lung digests. Forward and side scatter (FSC-A and SSC-A) gating was used to exclude debris. Among CD45 negative cells, population of CD326<sup>+</sup> and CD31<sup>+</sup> cells was identified as epithelial (CD326<sup>+</sup>CD31<sup>-</sup>CD45<sup>-</sup>) and endothelial (CD326<sup>-</sup>CD31<sup>+</sup>CD45<sup>-</sup>). Hematopoietic cells were identified as CD326<sup>-</sup>CD31<sup>-</sup>CD45<sup>+</sup> cells.