

Article: A locus on barley chromosome 5H affects adult plant resistance to powdery mildew

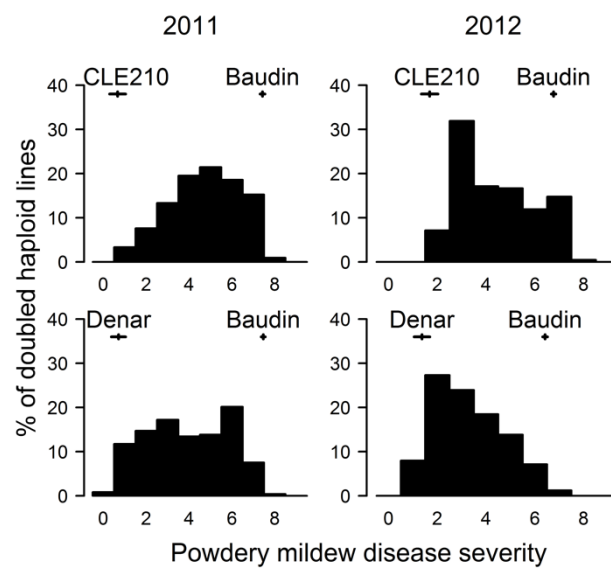
Journal: Molecular Breeding

Authors: Sanjiv Gupta, Elysia Vassos, Beata Sznajder, Rebecca Fox, Kelvin H. P. Khoo, Robert Loughman, Kenneth J. Chalmers and Diane E. Mather

Corresponding author: Diane E. Mather, The University of Adelaide,

diane.mather@adelaide.edu.au

Online Resource 2



Frequency distributions of predicted values for powdery mildew disease severity on adult plants of CLE210/Baudin (top) and Denar/Baudin (bottom) double haploid lines, as estimated from experiments conducted in 2011 (left) and 2012 (right). Disease severity was assessed on a scale from 0 (no disease) to 9 (very severe disease). Parental predicted values and their standard errors are shown by vertical and horizontal lines, respectively