

**eTable 1.** Population characteristics of participants without olfaction assessed, ARIC visit 5 (2011-2013, n=440)

**eTable 2.** Prevalence of MCI across the continuous smell test scores, ARIC visit 5 (2011-2013, n=5,021)

**eFigure 1.** Adjusted mean memory factor score (95% confidence interval), across continuous smell test scores, ARIC visit 5 (2011-2013, n=5,021)

**eFigure 2.** Adjusted mean language factor score (95% confidence interval), across continuous smell test scores, ARIC visit 5 (2011-2013, n=5,021)

**eFigure 3.** Adjusted mean executive function/processing speed factor score (95% confidence interval), across continuous smell test scores, ARIC visit 5 (2011-2013, n=5,021)

**eFigure 4.** Adjusted prevalence ratio of MCI (95% confidence interval), across continuous smell test scores, ARIC visit 5 (2011-2013, n=5,021)

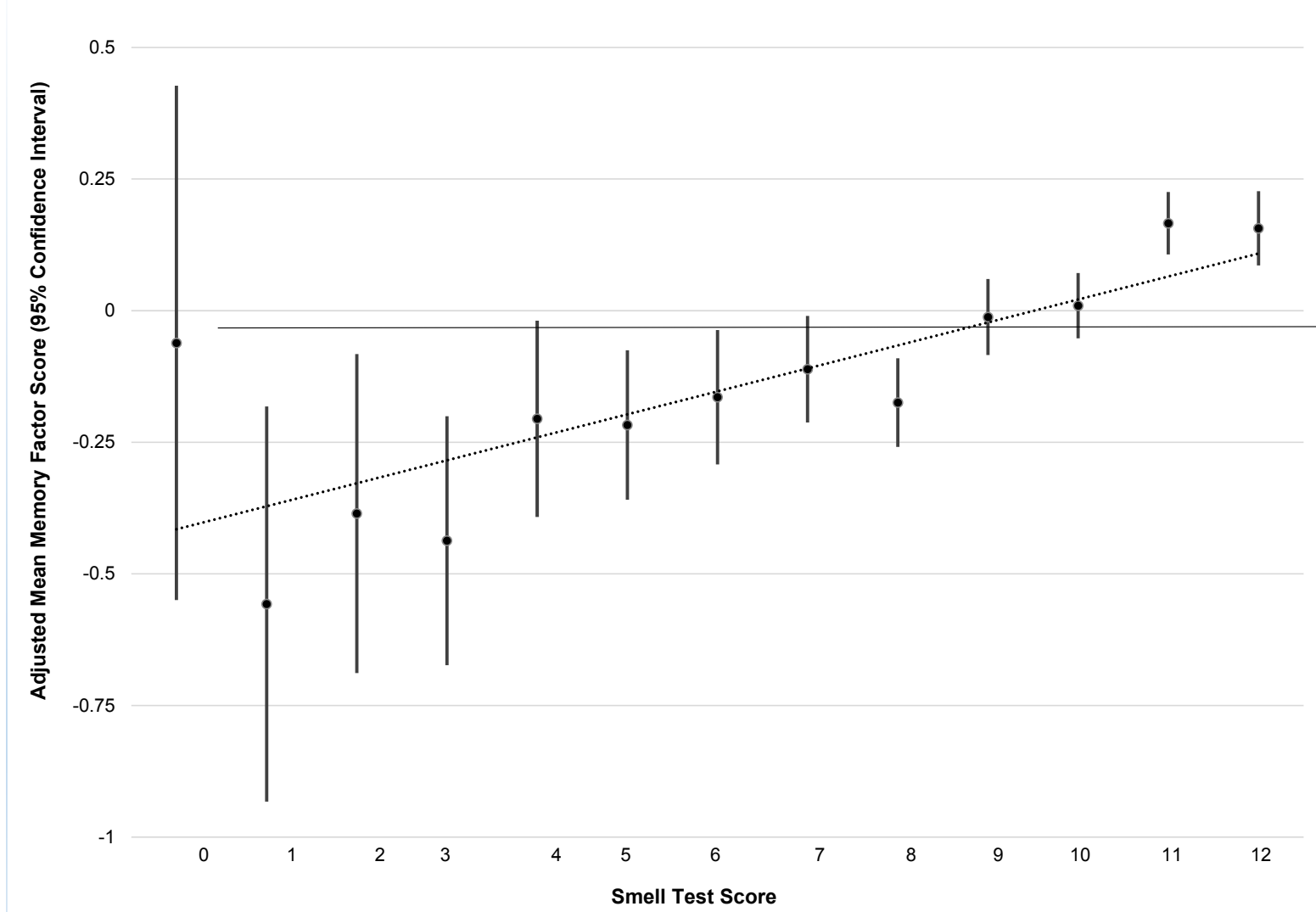
**Supplemental Table 1. Population Characteristics of participants without olfaction assessed, ARIC visit 5 (2011-2013, n=440)**

<b>Characteristics</b>	<b>Olfaction not assessed</b>
<b>Age, years, mean (SD)</b>	78.6 (5.6)
<b>Female sex, n (%)</b>	272 (61.8)
<b>Black Race, n (%)</b>	144 (32.7)
<b>&lt; High School Education, n (%)</b>	104 (23.6)
<b>Diabetes, n (%)</b>	104 (30.7)
<b>Hypertension, n (%)</b>	327 (81.3)
<b>Prevalent stroke, n (%)</b>	37 (8.4)
<b>Ever smoker, n (%)</b>	161 (58.1)
<b>ApoE4 allele <math>\geq</math> 1, n (%)</b>	171 (38.9)
<b>Memory factor score, mean (SD)</b>	-2.38 (0.81)
<b>Language factor score, mean (SD)</b>	-0.50 (0.80)
<b>Executive functioning/processing speed factor score, mean (SD)</b>	-0.65 (0.34)
<b>Global cognitive function factor score, mean (SD)</b>	-1.16 (0.83)

**Supplemental Table 2. Prevalence of MCI across the continuous smell test scores, ARIC visit 5 (2011-2013, n=5,021)**

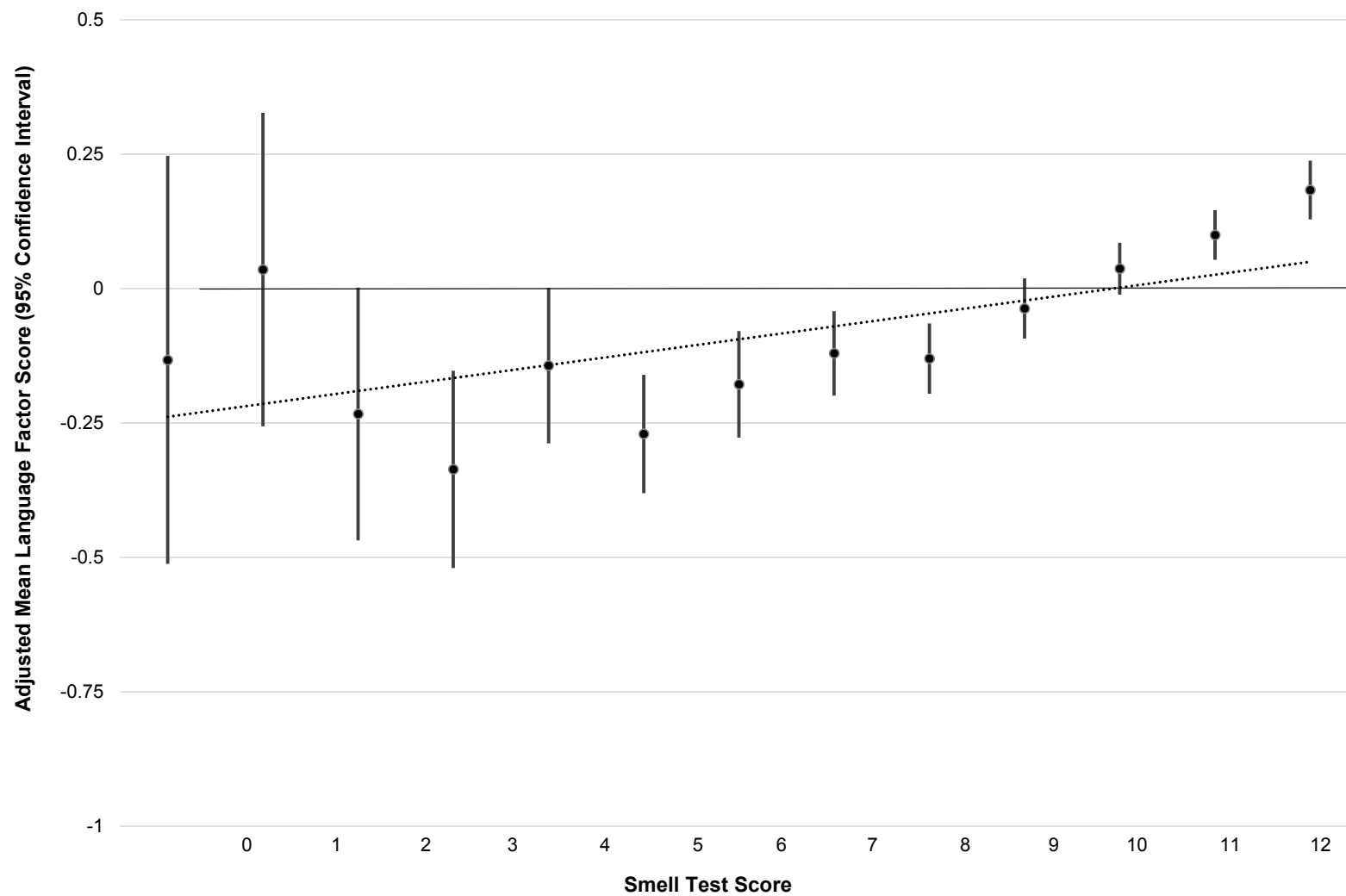
<b>Smell Test Score</b>	<b>Sample Size</b>	<b># MCI Cases (%)</b>
<b>0</b>	13	7 (53.8)
<b>1</b>	22	13 (59.1)
<b>2</b>	34	14 (41.2)
<b>3</b>	56	24 (42.9)
<b>4</b>	91	24 (26.4)
<b>5</b>	159	58 (36.5)
<b>6</b>	199	64 (32.2)
<b>7</b>	331	96 (29.0)
<b>8</b>	486	156 (32.1)
<b>9</b>	695	160 (23.0)
<b>10</b>	1014	199 (19.6)
<b>11</b>	1163	183 (15.7)
<b>12</b>	758	94 (12.4)
<b>Analytic sample</b>	5,021	1,092 (21.7)

Supplemental Figure 1. Adjusted mean memory factor score (95% confidence interval), across continuous smell test scores, ARIC visit 5 (2011-2013, n=5,021)



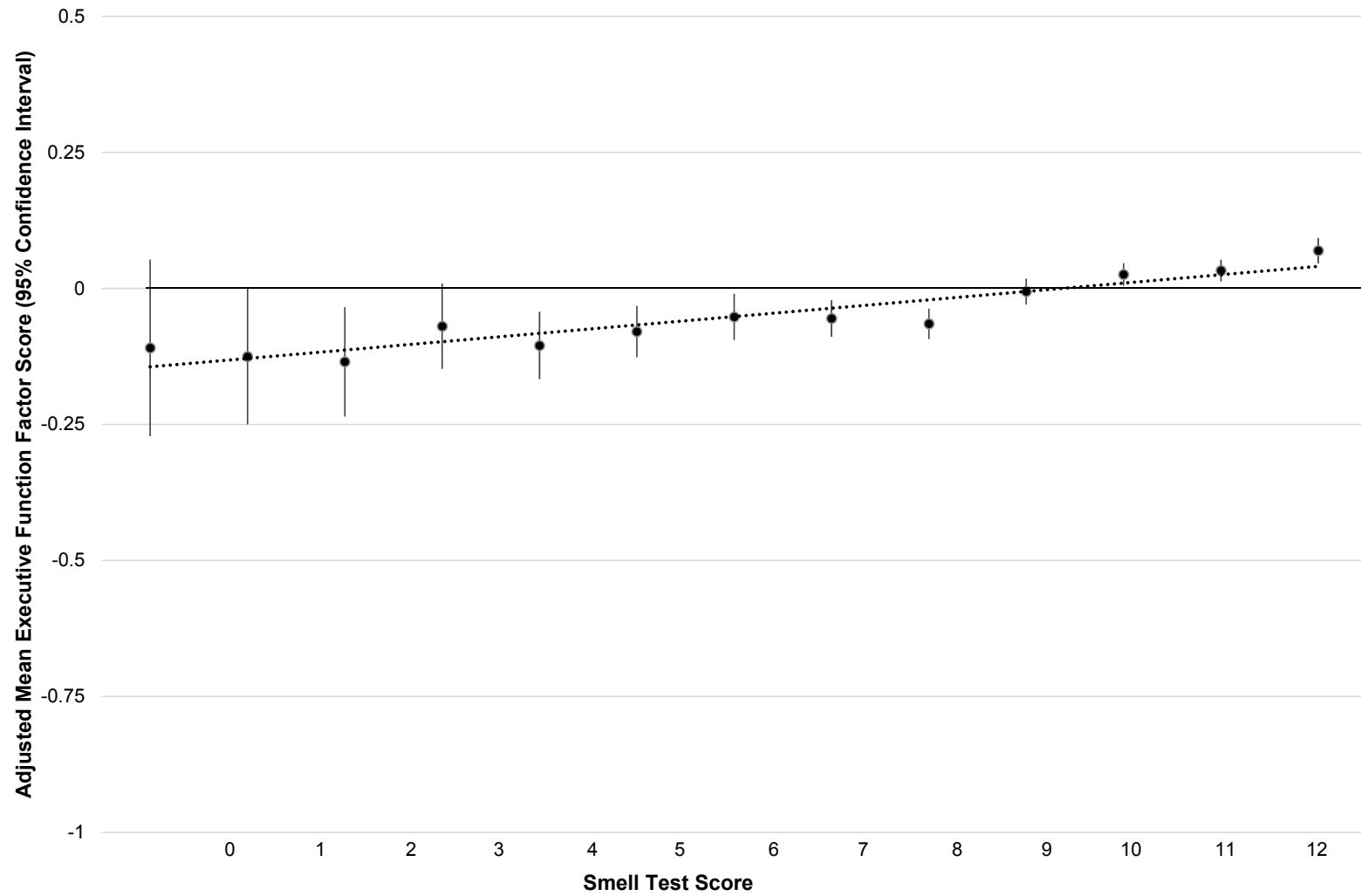
Adjusted for age, sex, education, race-field center, ApoE4, ever smoker status

Supplemental Figure 2. Adjusted mean language factor score (95% confidence interval), across continuous smell test scores, ARIC visit 5 (2011-2013, n=5,021)



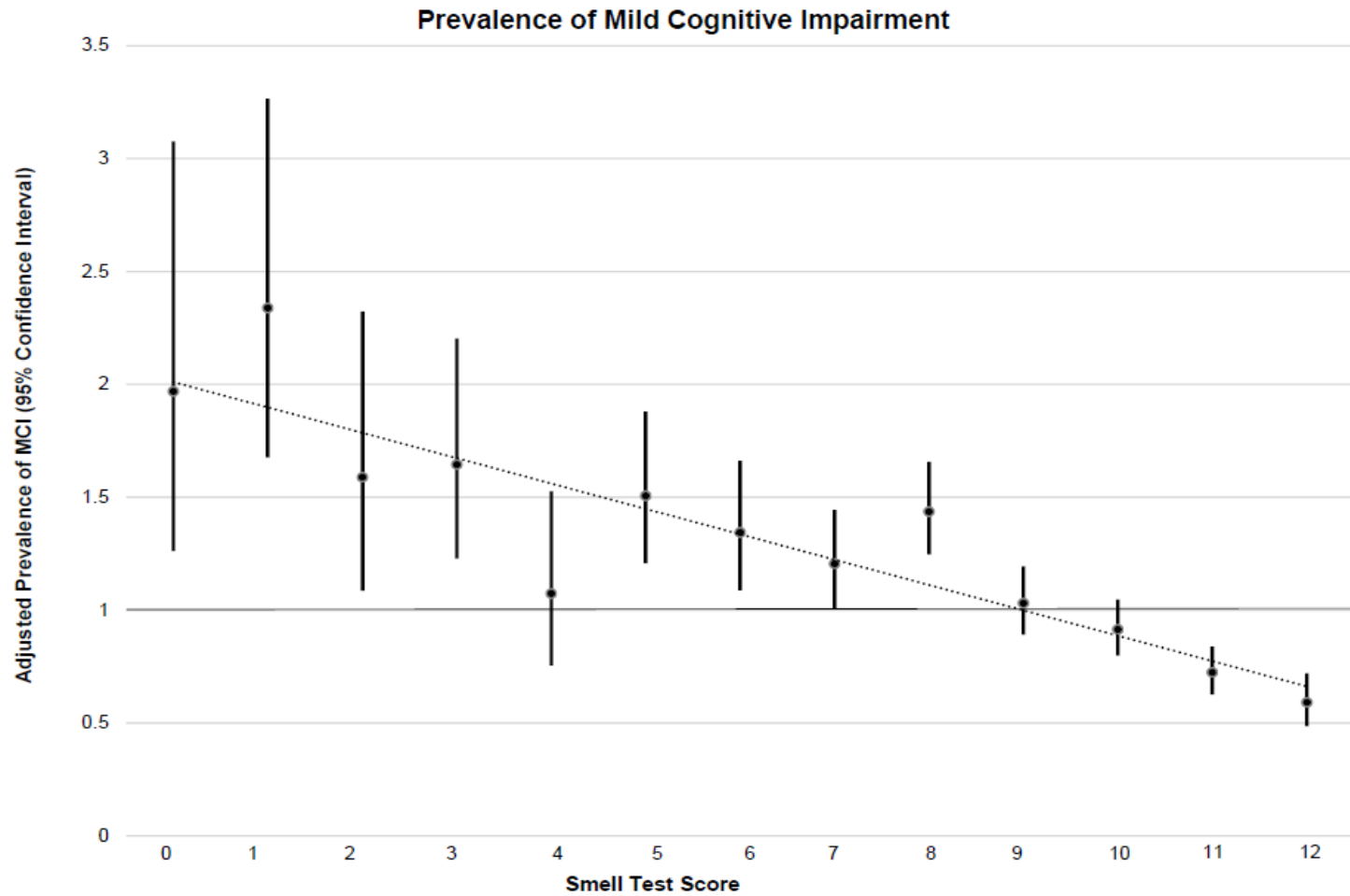
Adjusted for age, sex, education, race-field center, ApoE4, ever smoker status

**Supplemental Figure 3. Adjusted mean executive function/processing speed factor score (95% confidence interval), across continuous smell test scores, ARIC visit 5 (2011-2013, n=5,021)**



Adjusted for age, sex, education, race-field center, ApoE4, ever smoker status

Supplemental Figure 4. Adjusted prevalence ratio of MCI (95% confidence interval), across smell test scores (0-12), ARIC visit 5 (2011-2013, n=5,021)



Adjusted for age, sex, education, race-field center, APOE ε4, ever smoker status  
p-trend<0.05