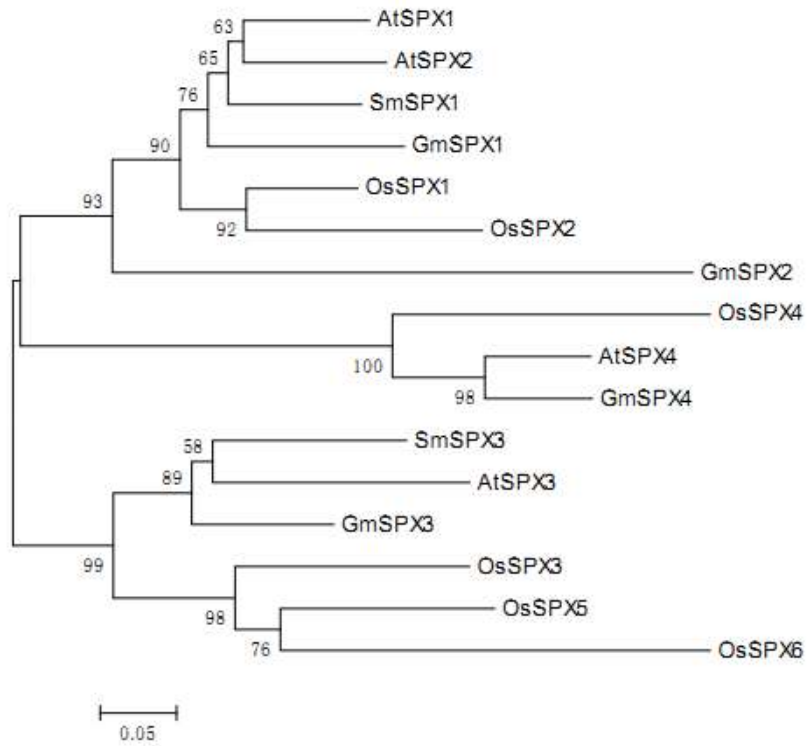


1 **Supplementary profiles**2 **Table S1. Primers used for RT-qPCR**

Gene	Sense Primer (5'–3')	Reverse Primer (5'–3')
<i>β-ACTIN</i>	GGTGCCCTGAGGTCCTGTT	AGGAACCACCGATCCAGACA
<i>PAL</i>	GGCGGCGATTGAGAGCAGGA	ATCAGCAGATAGGAAGAGGAGCACC
<i>TAT</i>	TTCAACGGCTACGCTCCAAC	AAACGGACAATGCTATCTCAAT
<i>RAS</i>	CGCCCTAGTTGAGTTCTACCCTTACGC	TCGGATAGGTGGTGCTCGTTTGC
<i>CYP98AH4</i>	CTAAGGAGGTGCTGAAGGAG	GTGGAGTCGTTGTAGATGGA
<i>DXS1</i>	CGACCAGGTAGTGCACGACG	TCATCTGAAGGAGCCATCACCAC
<i>HMGR</i>	GCAACATCGTCTCCGCCGTCTACA	GATGGTGGCCAGCAGCCTGGAGTT
<i>KSL</i>	CATGTCGAACAAGGACGTA	AATCATCCAAGGTTAGTGCC
<i>CYP76AH1</i>	CAGGAGGTGAACGGCTATCT	GTTATGAACCAGAGTCGCAGTAG
<i>SPX1</i>	ATGAGGGTGTGATCAAGGGA	ACTAATCTGGAGTGGTGGCAAT
<i>SPX3</i>	GCCAGACCACCATAGAATCG	GCGGCGGCAGAGAGAA



4

5 **Figure S1. Multiple sequence alignment of SmSPX1/3 protein sequences with**
 6 **AtSPXs, OsSPXs and GmSPXs protein sequences.**

7