

Design, Synthesis, and Evaluation of Homochiral Peptides Containing Arginine and Histidine as Molecular Transporters

Naglaa Salem El-Sayed^{1,2}, Taryn Miyake¹, Amir Nasrolahi Shirazi¹, Shang Eun Park¹, Jimmy Clark¹, Stephani Buchholz¹, Keykavous Parang¹, and Rakesh Tiwari^{1,*}

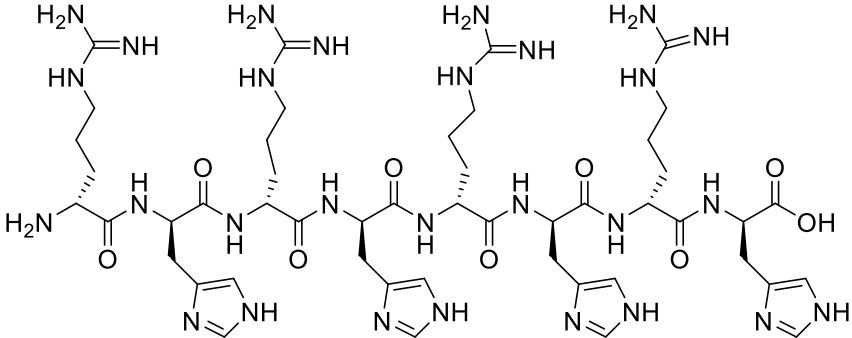
- 1 Center for Targeted Drug Delivery, Department of Biomedical and Pharmaceutical Sciences, Chapman University School of Pharmacy, Harry and Diane Rinker Health Science Campus, Irvine, California 92618, United States;
- 2 Cellulose and Paper Department, National Research Center, Dokki 12622, Cairo, Egypt;

Correspondence: tiwari@chapman.edu; Tel.: +1-714-516-5483

Content

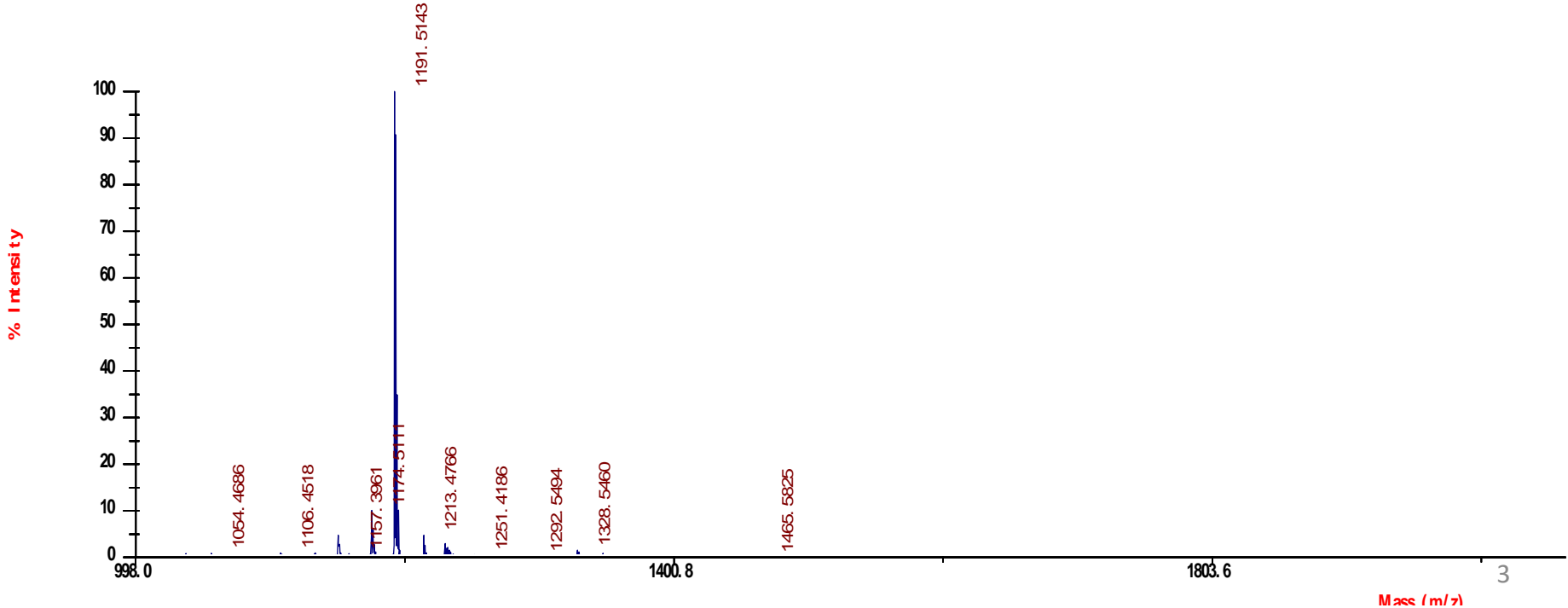
- MALDI-MS spectra of synthesized peptides. (Slide #3-16)

1. Linear (HR)₄



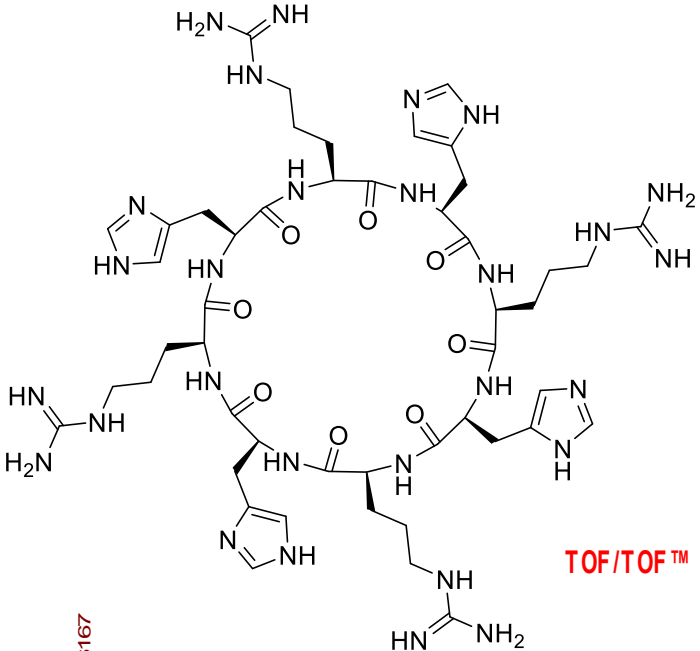
Chemical Formula: C₄₈H₇₈N₂₈O₉
Exact Mass: 1190.6507

TOF/TOF™ Reflector Spec #1 [BP = 1191.6, 17891]

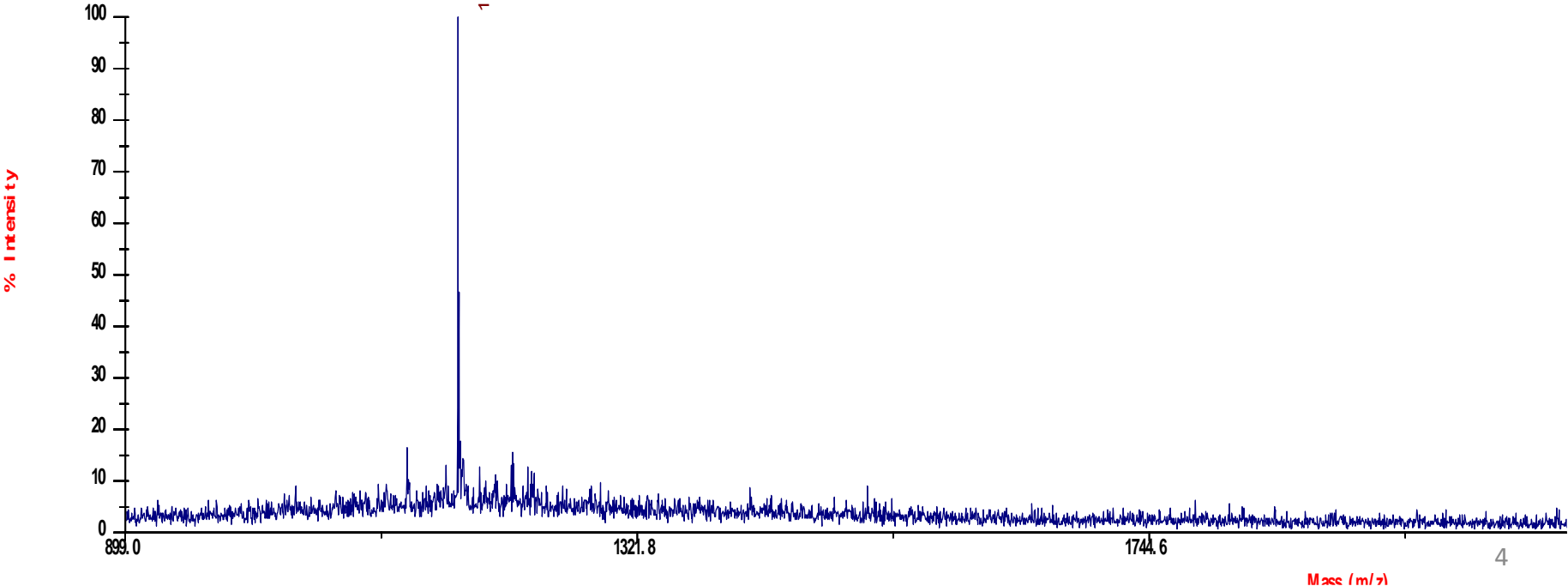


2. Cyclic [HR]₄

Chemical Formula: C₄₈H₇₆N₂₈O₈
Exact Mass: 1172.6401

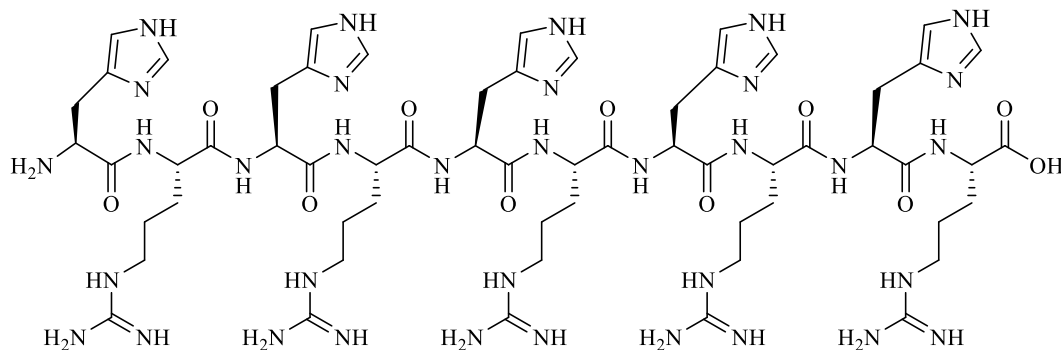


TOF/TOF™ Reflector Spec #1 [BP = 1173.6, 63]



Mass (m/z)

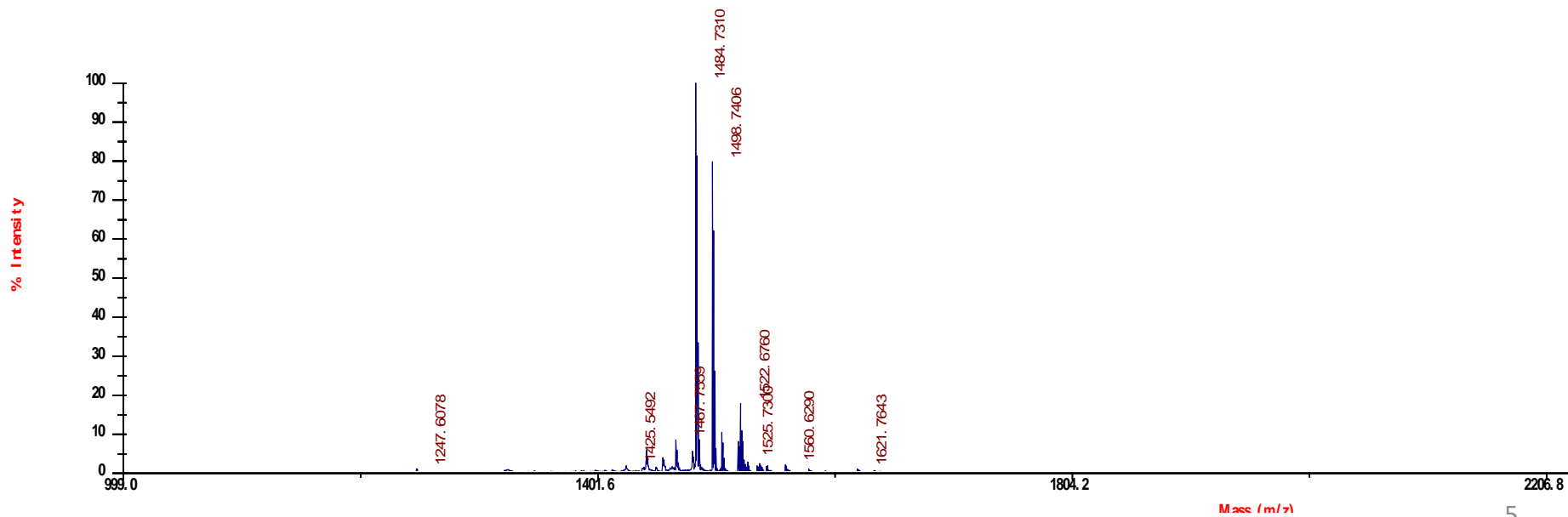
3. Linear (HR)₅



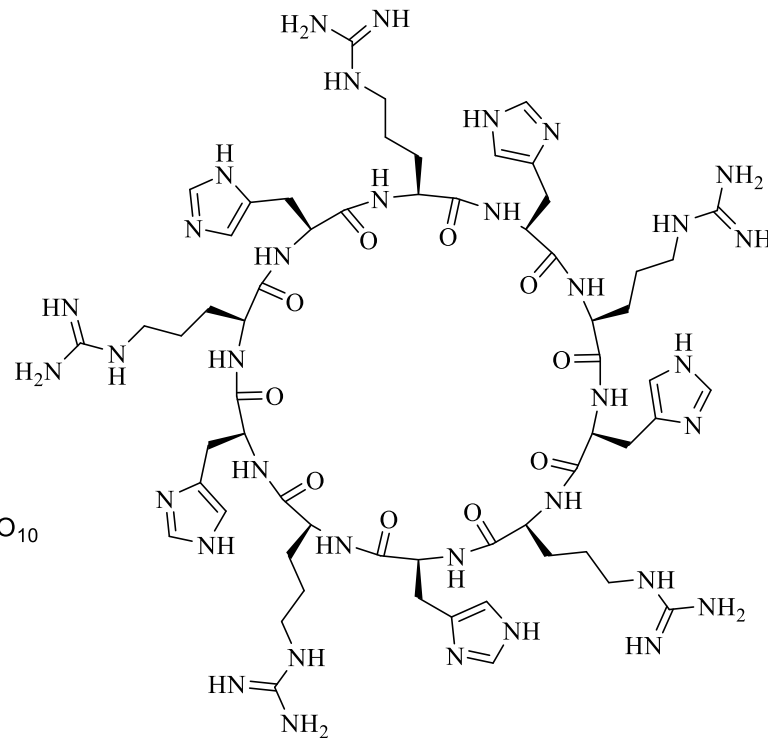
Chemical Formula: C₆₀H₉₇N₃₅O₁₁

Exact Mass: 1483.8107

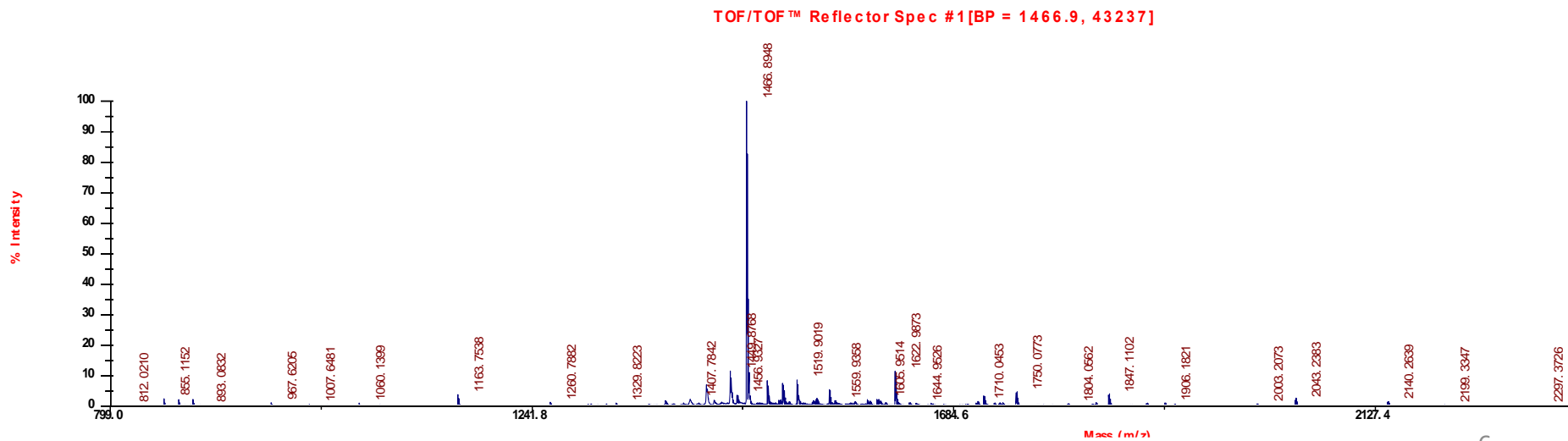
TOF/TOF™ Reflector Spec #1[BP = 1484.7, 1879]



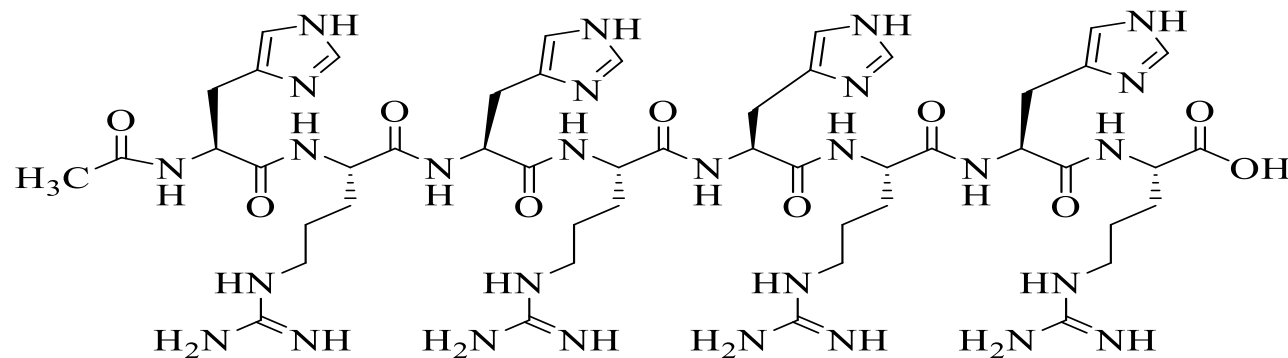
4. Cyclic [HR]₅



Chemical Formula: C₆₀H₉₅N₃₅O₁₀
Exact Mass: 1465.8001



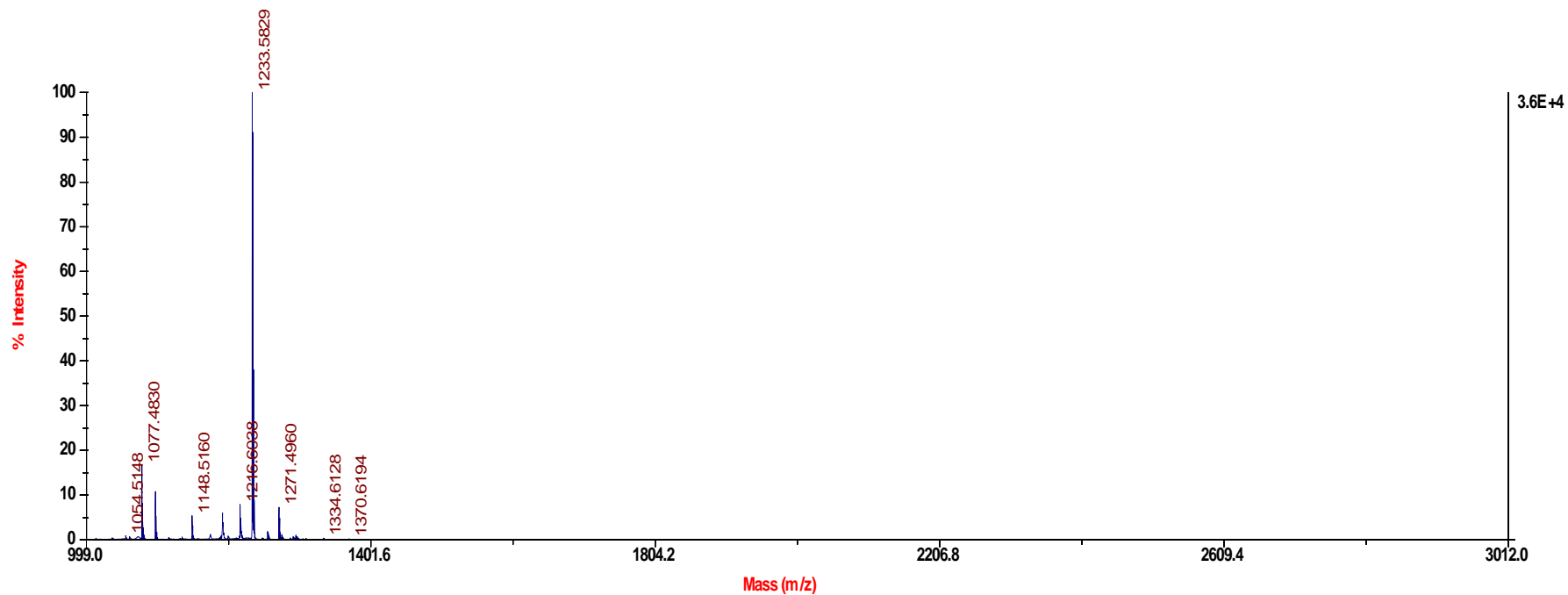
5. C₂-(HR)₄



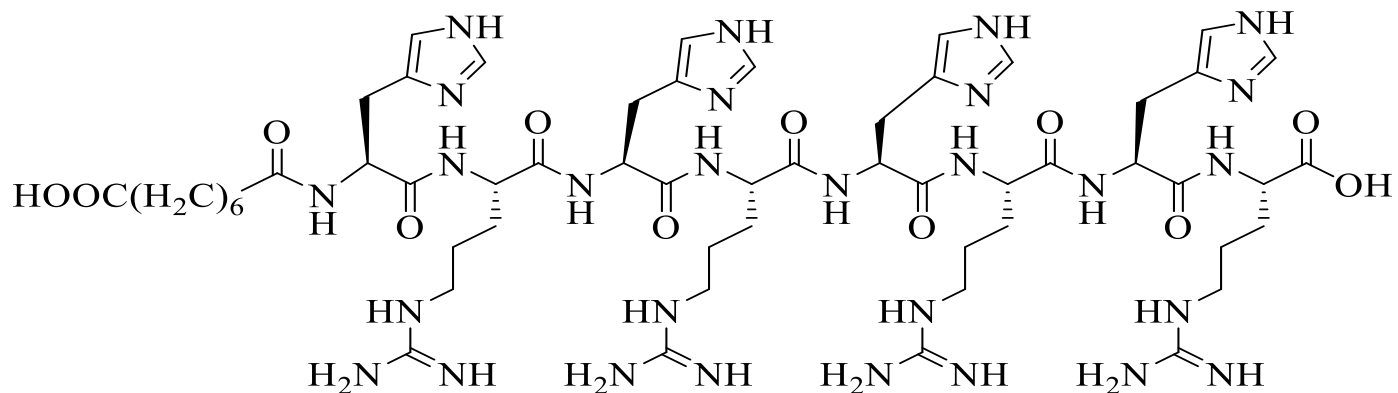
Chemical Formula: C₅₀H₈₀N₂₈O₁₀

Exact Mass: 1232.6612

TOF/TOF™ Reflector Spec #1[BP = 1233.6, 36318]



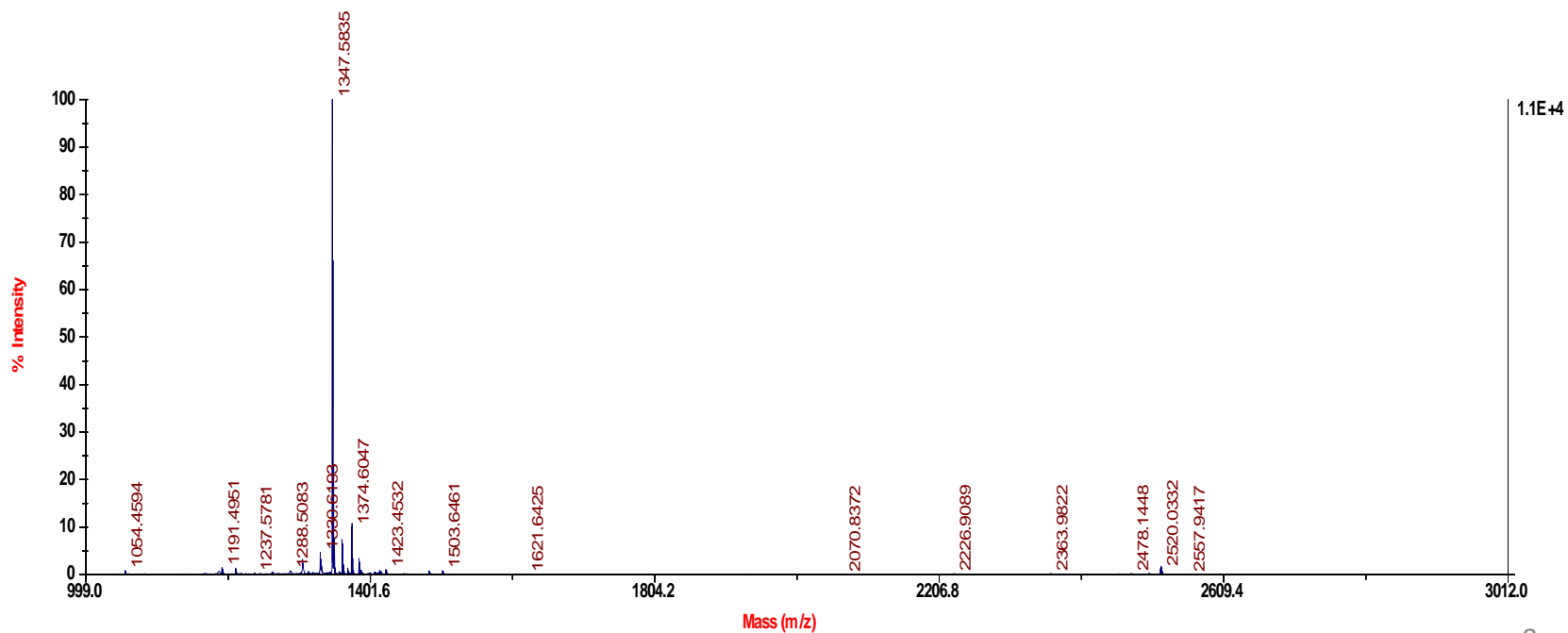
6. C₈-(HR)₄



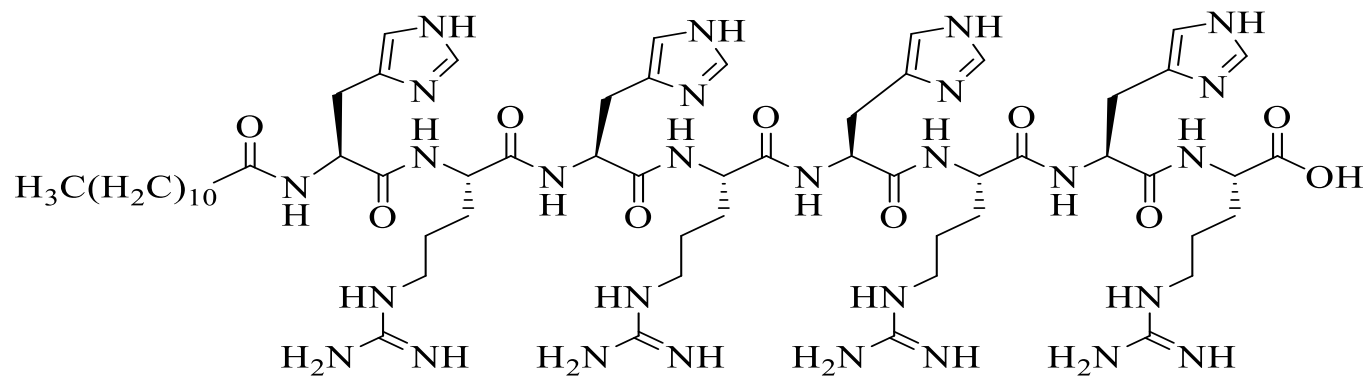
Chemical Formula: C₅₆H₉₀N₂₈O₁₂

Exact Mass: 1346.7293

TOF/TOF™ Reflector Spec #1[BP= 1347.6,11460]



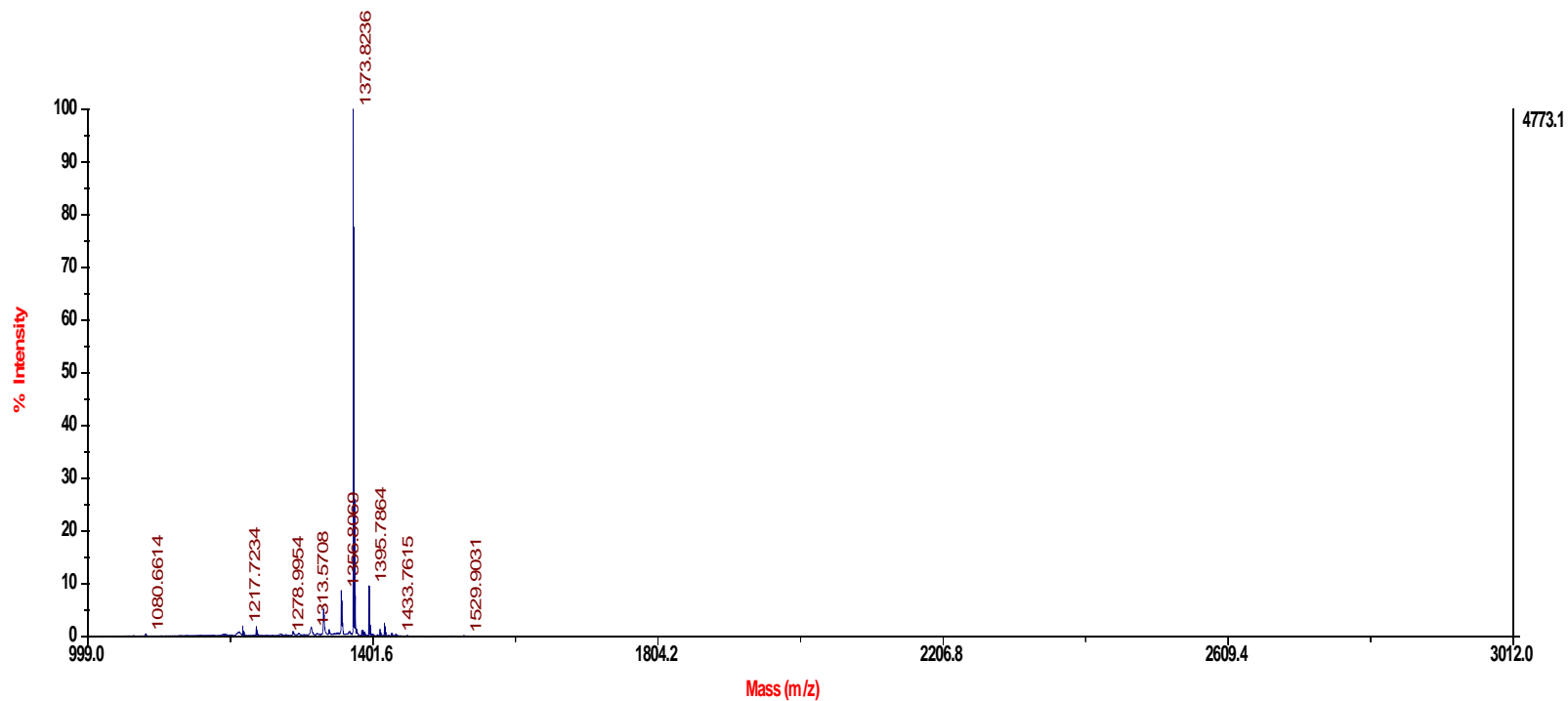
7. C₁₂-(HR)₄



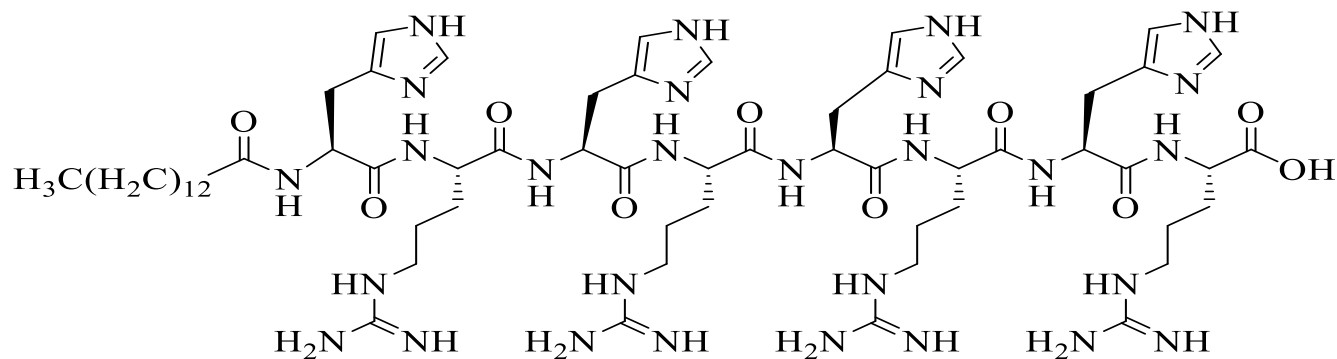
Chemical Formula: C₆₀H₁₀₀N₂₈O₁₀

Exact Mass: 1372.8177

TOF/TOF™ Reflector Spec #1[BP= 1373.8, 4773]



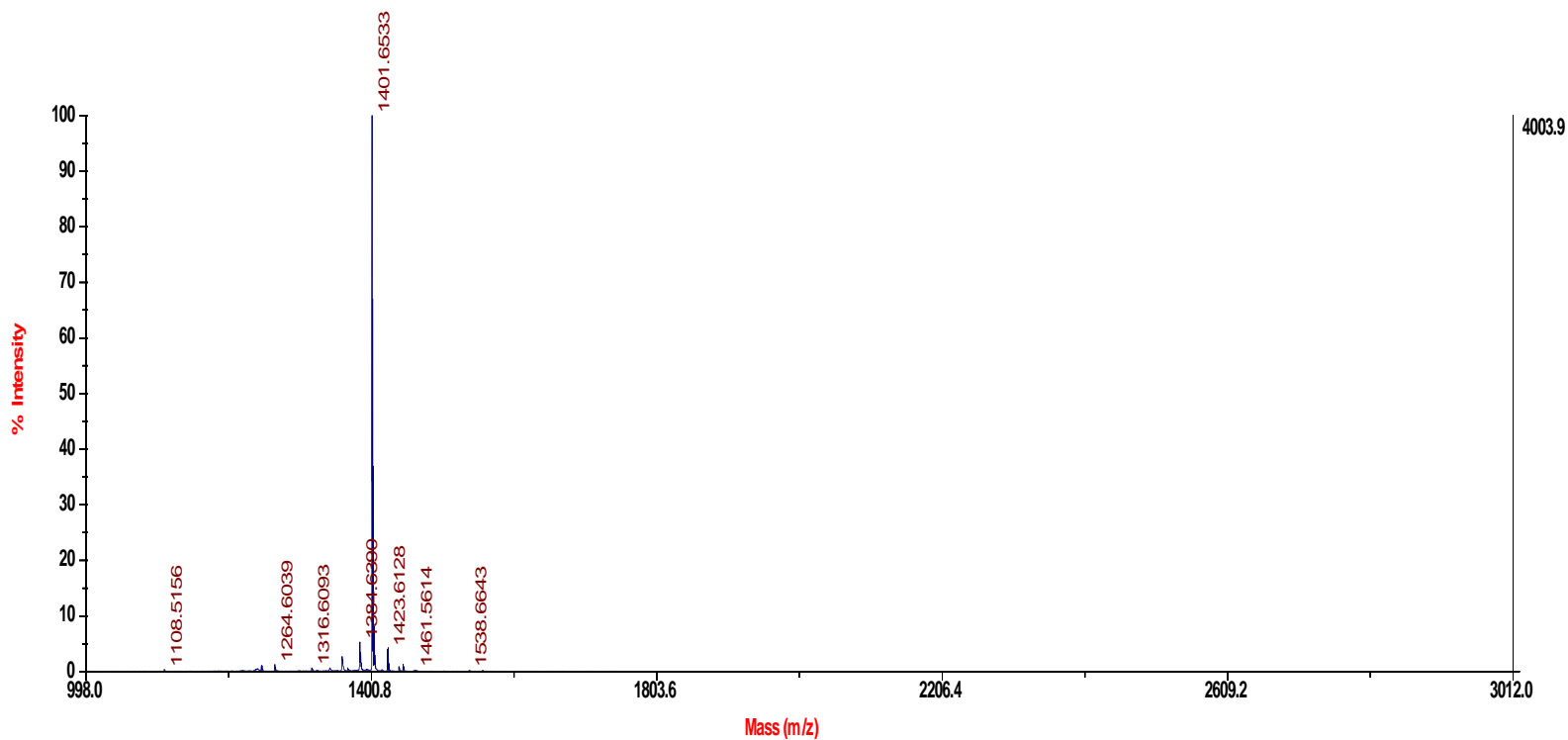
8. C₁₄⁻(HR)₄



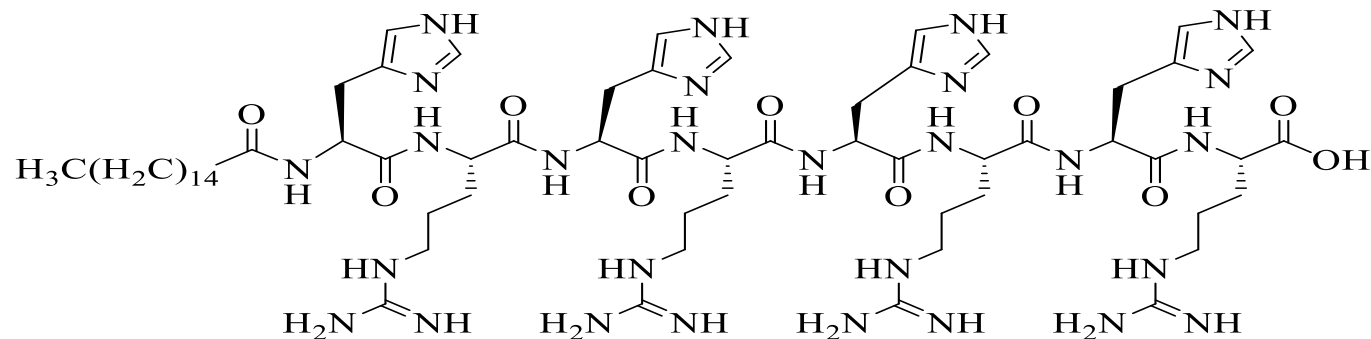
Chemical Formula: C₆₂H₁₀₄N₂₈O₁₀

Exact Mass: 1400.8490

TOF/TOF™ Reflector Spec #1 [BP = 1401.7, 4004]



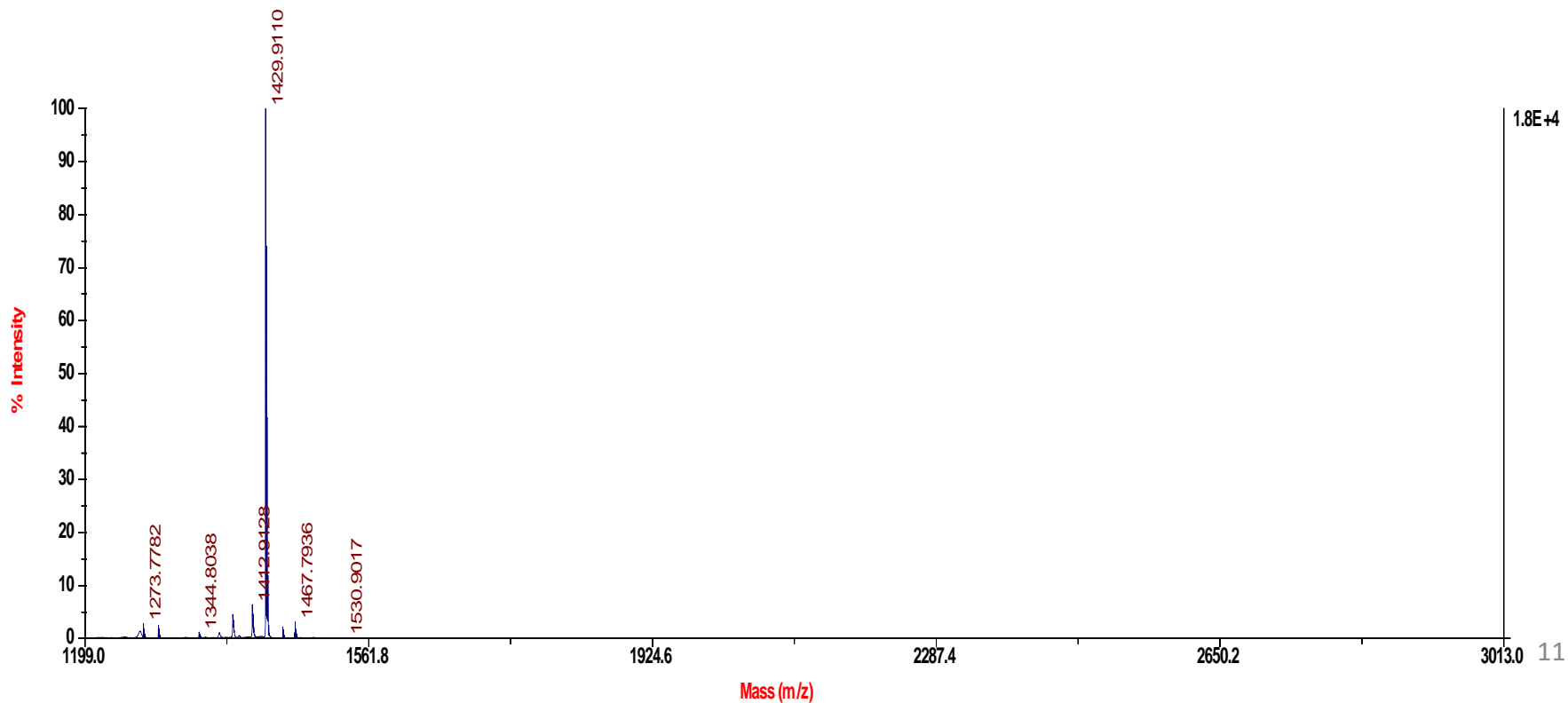
9. C₁₆⁻(HR)₄



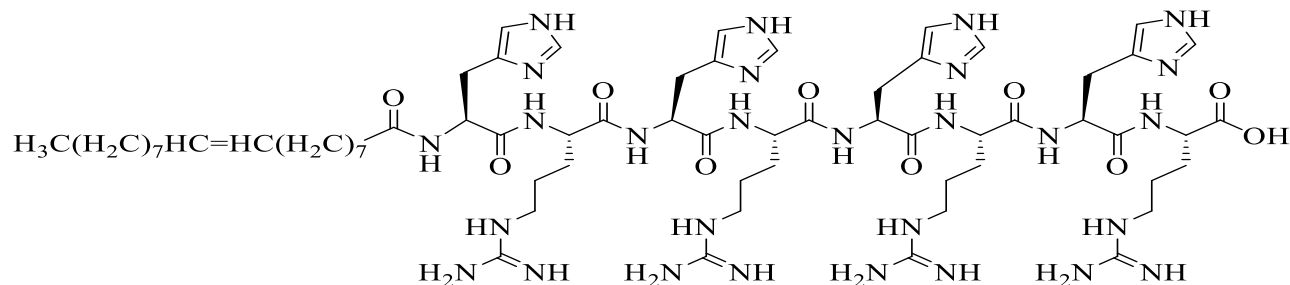
Chemical Formula: C₆₄H₁₀₈N₂₈O₁₀

Exact Mass: 1428.8803

TOF/TOF™ Reflector Spec #1[BP= 1429.9, 17771]

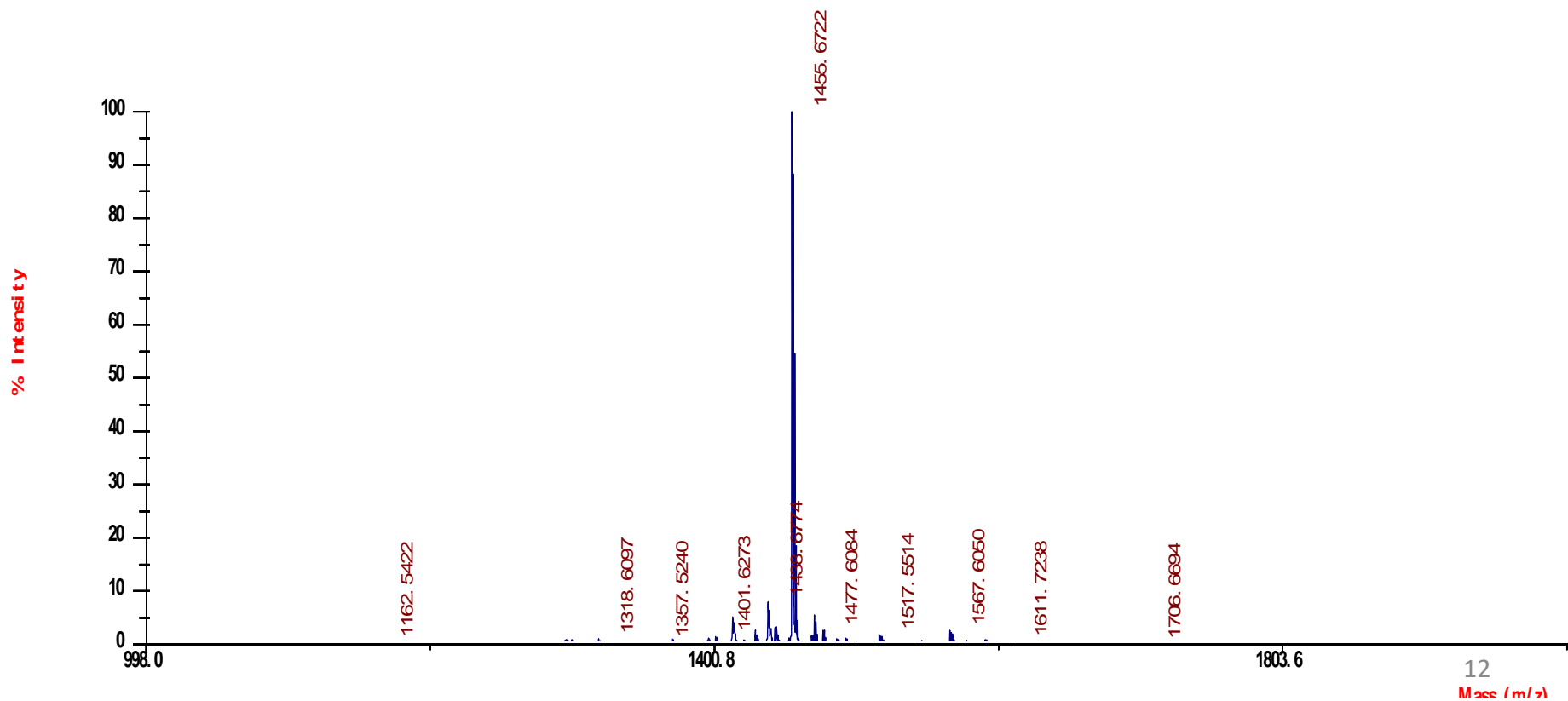


10. C₁₈⁻(HR)₄

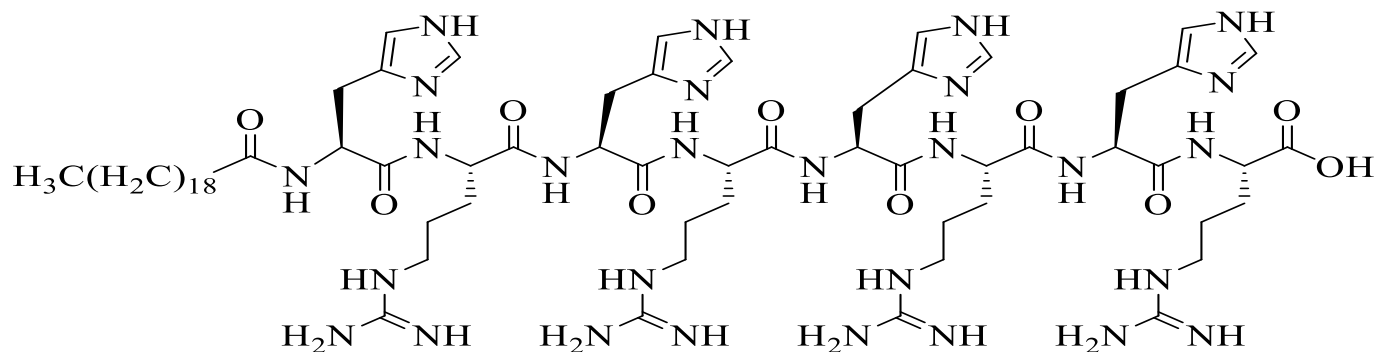


Chemical Formula: C₆₆H₁₁₀N₂₈O₁₀
Exact Mass: 1454.8960

TOF/TOF™ Reflector Spec #1[BP = 1455.6, 69984]



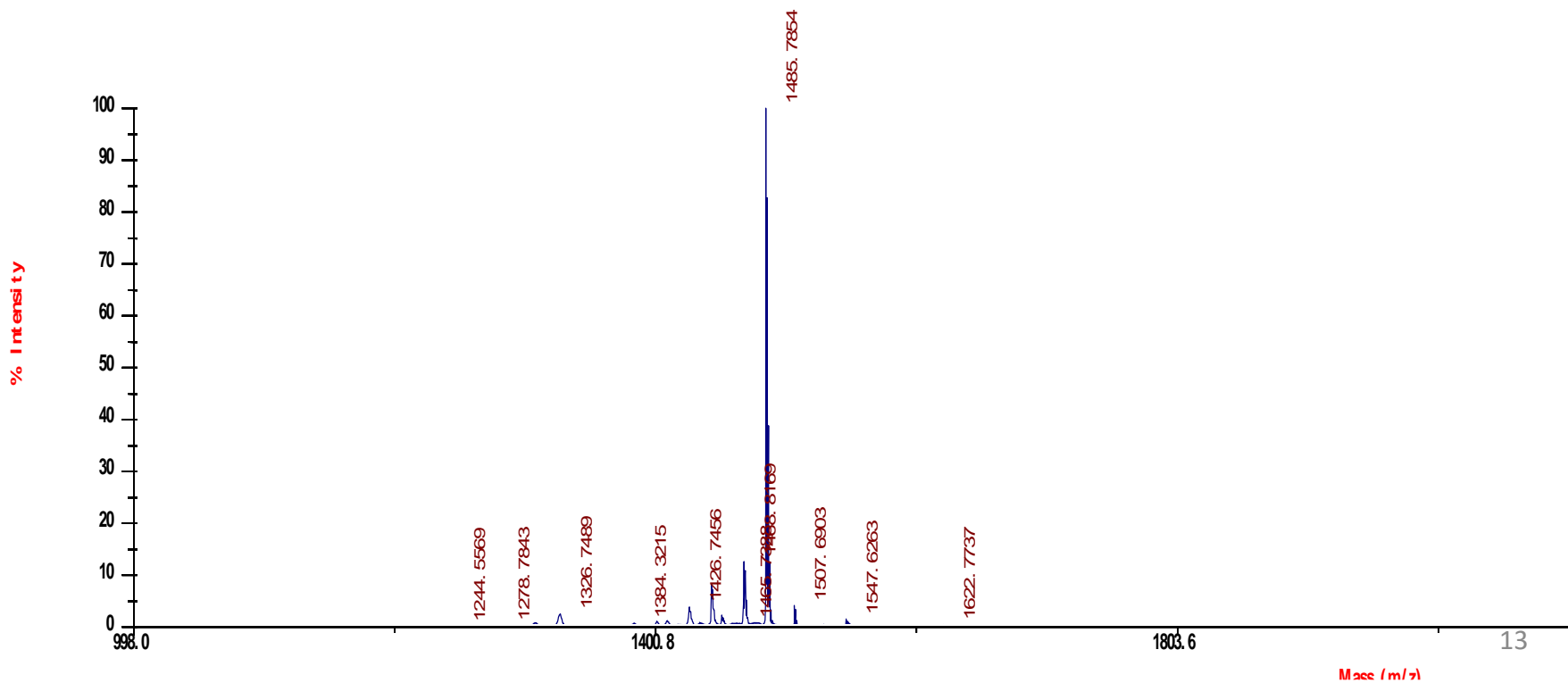
11. C₂₀-(HR)₄



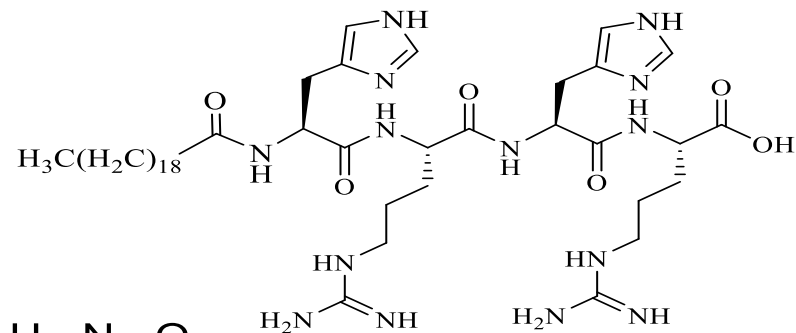
Chemical Formula: C₆₈H₁₁₆N₂₈O₁₀

Exact Mass: 1484.9429

TOF/TOF™ Reflector Spec #1[BP = 1485.8, 29011]



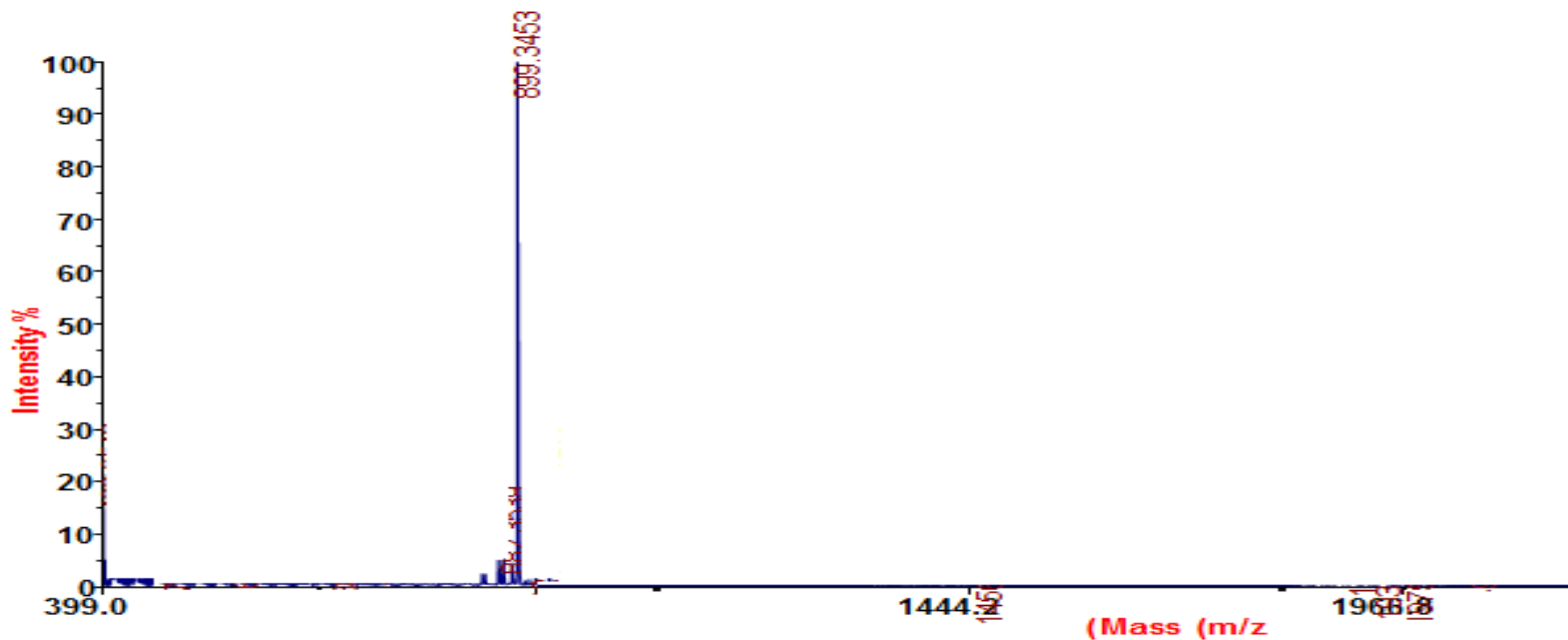
11. C₂₀-(HR)₂



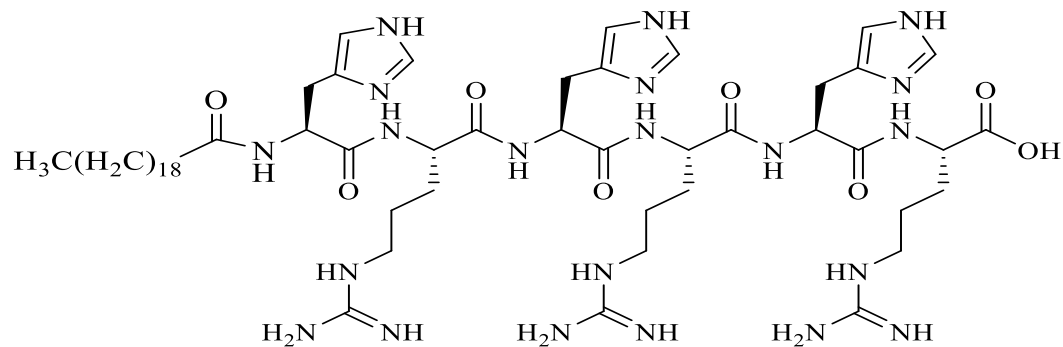
Chemical Formula: C₄₄H₇₈N₁₄O₆

Exact Mass: 898.6229

[21437, 899.4[BP = 1 TOF/TOF™ Reflector Spec #

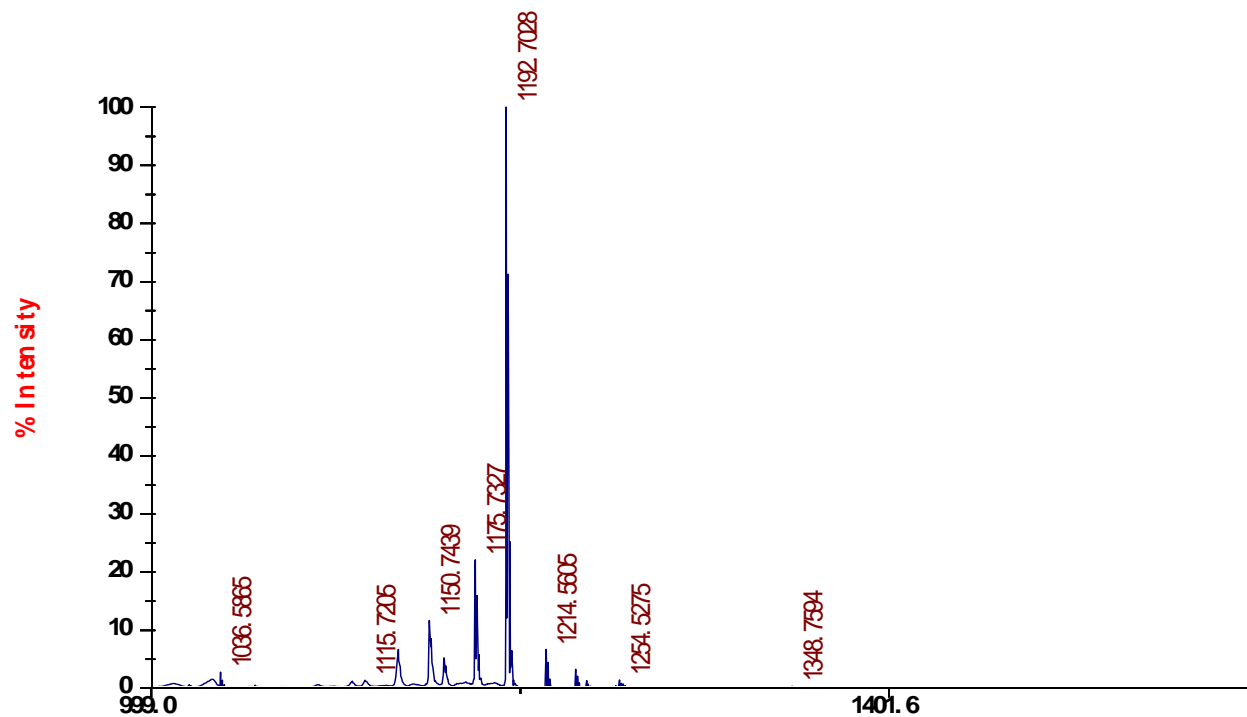


12. C₂₀-(HR)₃

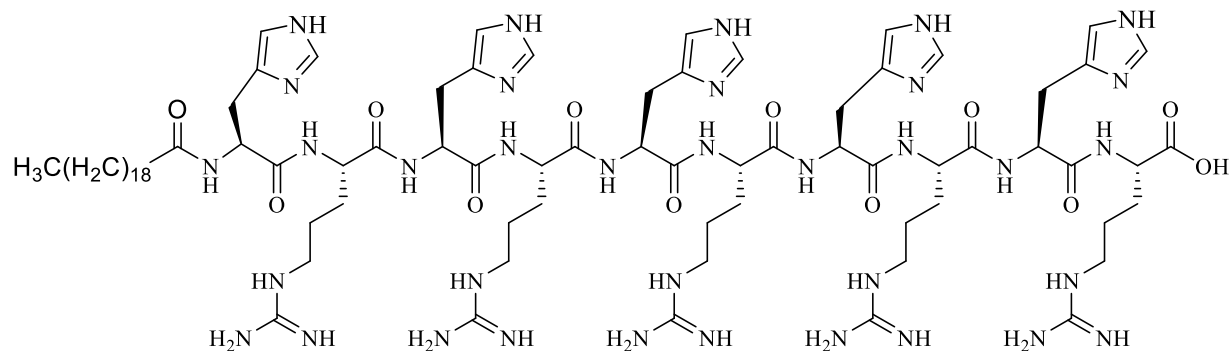


Chemical Formula: C₅₆H₉₇N₂₁O₈

Exact Mass: 1191.7829



13. C₂₀-(HR)₅



Chemical Formula: C₈₀H₁₃₅N₃₅O₁₂

Exact Mass: 1778.1029

TOF/TOF™ Reflector Spec #1[BP = 1779.8, 5937]

