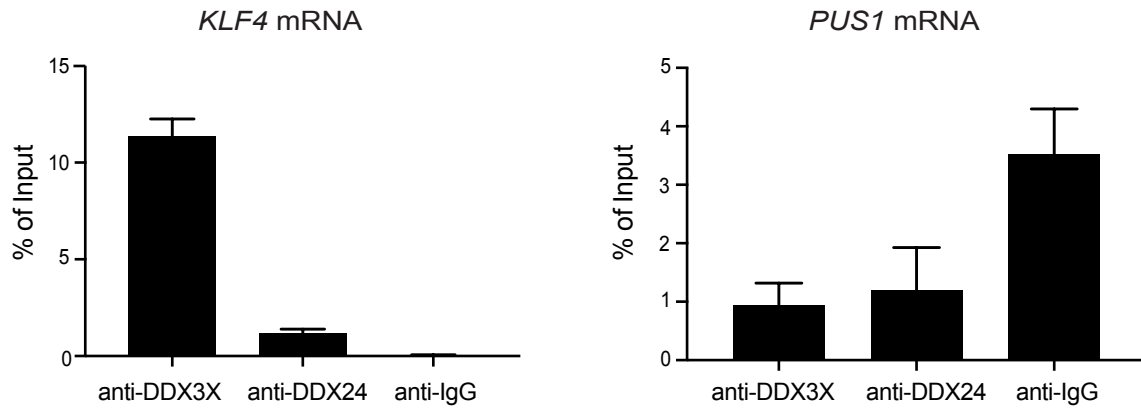


Supporting Information SF4



SF4. CLIP-qPCR in wild type MCF7 cells. CLIP-qPCR was performed as described in Materials and Methods with anti-DDX3X, anti-DDX24 and anti-IgG antibodies in wild type MCF7 cells. RNA obtained from each immunoprecipitation was analysed by RT-qPCR to determine enrichment of *KLF4* or *PUS1* mRNAs. Results represent the average of three replicates.