

Sporulosol, a New Ketal from the Fungus *Paraconiothyrium sporulosum*

Chen Zhao ¹, Peinan Fu ^{1,2}, Yang Zhang ¹, Xingzhong Liu ³, Fengxia Ren ^{1,*} and Yongsheng Che ^{1,*}

¹ State Key Laboratory of Toxicology & Medical Countermeasures, Beijing Institute of Pharmacology & Toxicology, Beijing 100850, China; lfyz34304@126.com (C.Z.); fpn1109@aliyun.com (P.F.); zhangyang@bmi.ac.cn (Y.Z.)

² College of Pharmacy, Nanjing University of Chinese Medicine, Nanjing 210023, China

³ State Key Laboratory of Mycology, Institute of Microbiology, Chinese Academy of Sciences, Beijing 100190, China; liuxz@im.ac.cn

* Correspondence: renfx@bmi.ac.cn (F.R.); cheys@im.ac.cn (Y.C.); Tel.: +86-10-6693-2679 (Y.C.)

Contents	Page
1) Figure S1. ¹ H NMR spectrum of sporulosol (1 ; 400 MHz, acetone- <i>d</i> ₆)	3
2) Figure S2. ¹³ C NMR spectrum of sporulosol (1 ; 100 MHz, acetone- <i>d</i> ₆)	4
3) Figure S3. HSQC spectrum of sporulosol (1 ; 400 MHz, acetone- <i>d</i> ₆)	5
4) Figure S4. HMBC spectrum of sporulosol (1 ; 400 MHz, acetone- <i>d</i> ₆)	6
5) Figure S5. ¹ H NMR spectrum of compound 2 (600 MHz, acetone- <i>d</i> ₆)	7
6) Figure S6. ¹³ C NMR spectrum of compound 2 (150 MHz, acetone- <i>d</i> ₆)	8
7) Figure S7. HPLC chromatogram of sporulosol (1) using a CHIRALPAK AD-H column	9
8) Figure S8. HPLC chromatogram of enalin A (5) using a CHIRALPAK AD-H column	10
9) Figure S9. HPLC–CD chromatogram of enalin A (5) using a CHIRALPAK AD-H column	11
10) Figure S10. HPLC–MS analysis of the crude extract	12

Figure S1. ^1H NMR Spectrum of Sporulosol (**1**; 400 MHz, Acetone- d_6)

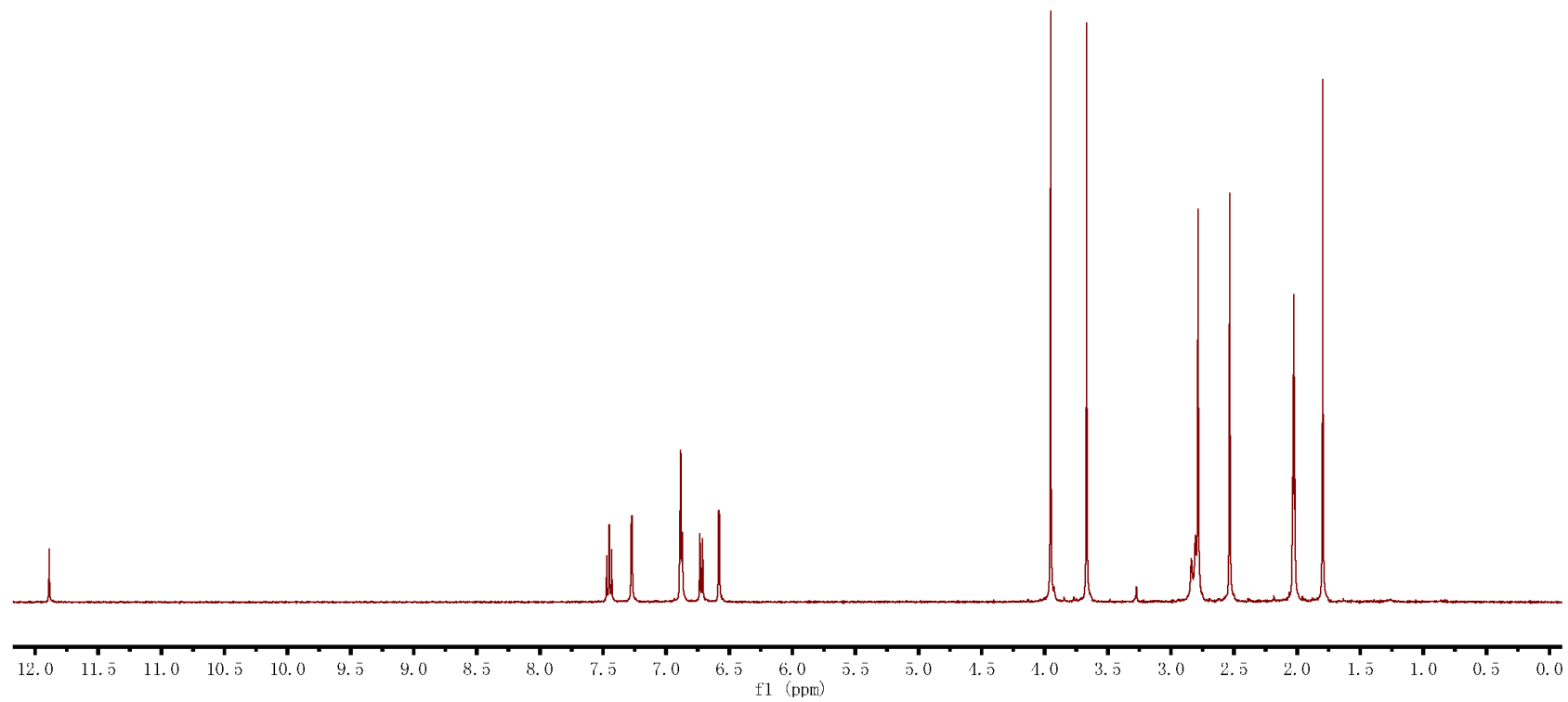


Figure S2. ^{13}C NMR Spectrum of Sporulosol (**1**; 100 MHz, Acetone- d_6)

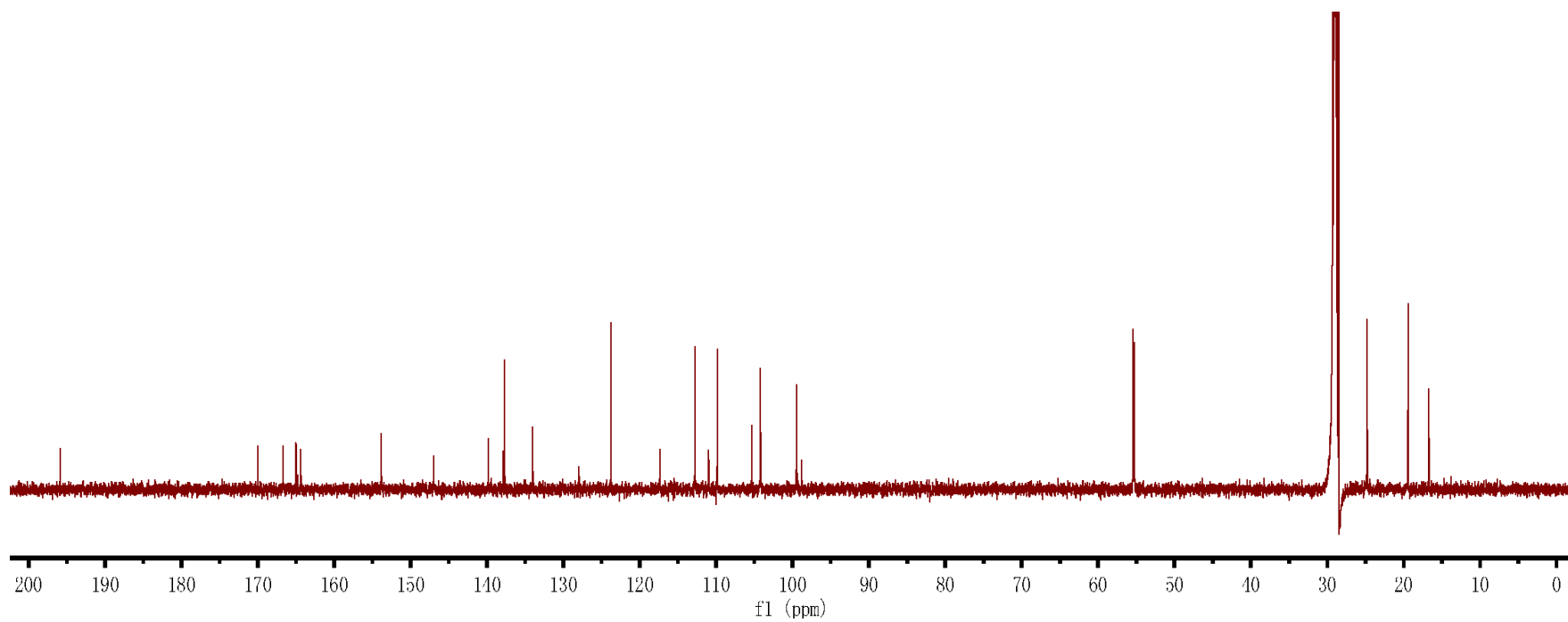


Figure S3. HSQC Spectrum of Sporulosol (**1**; 400 MHz, Acetone-*d*₆)

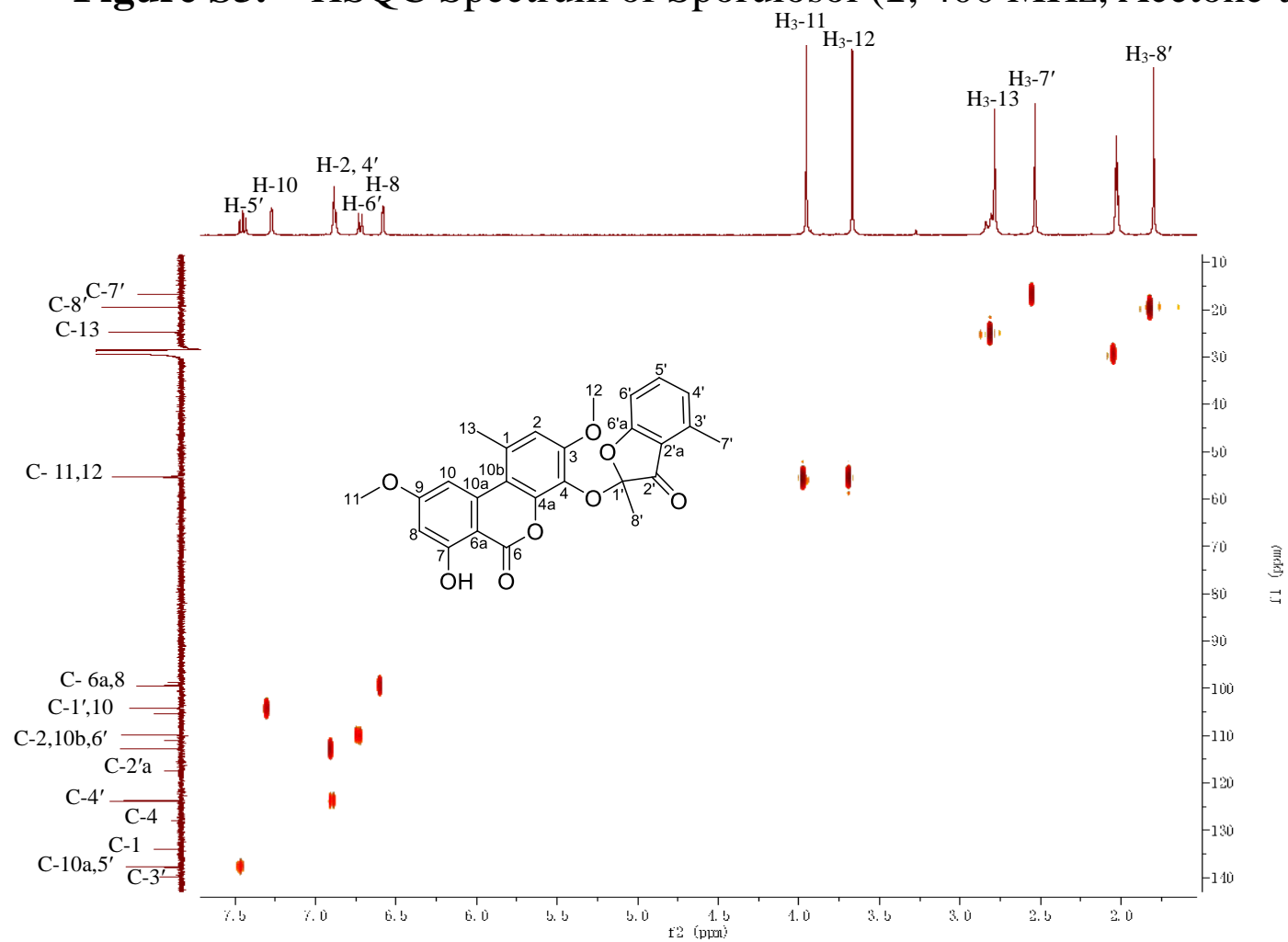


Figure S4. HMBC Spectrum of Sporulosol (**1**; 400 MHz, Acetone-*d*₆)

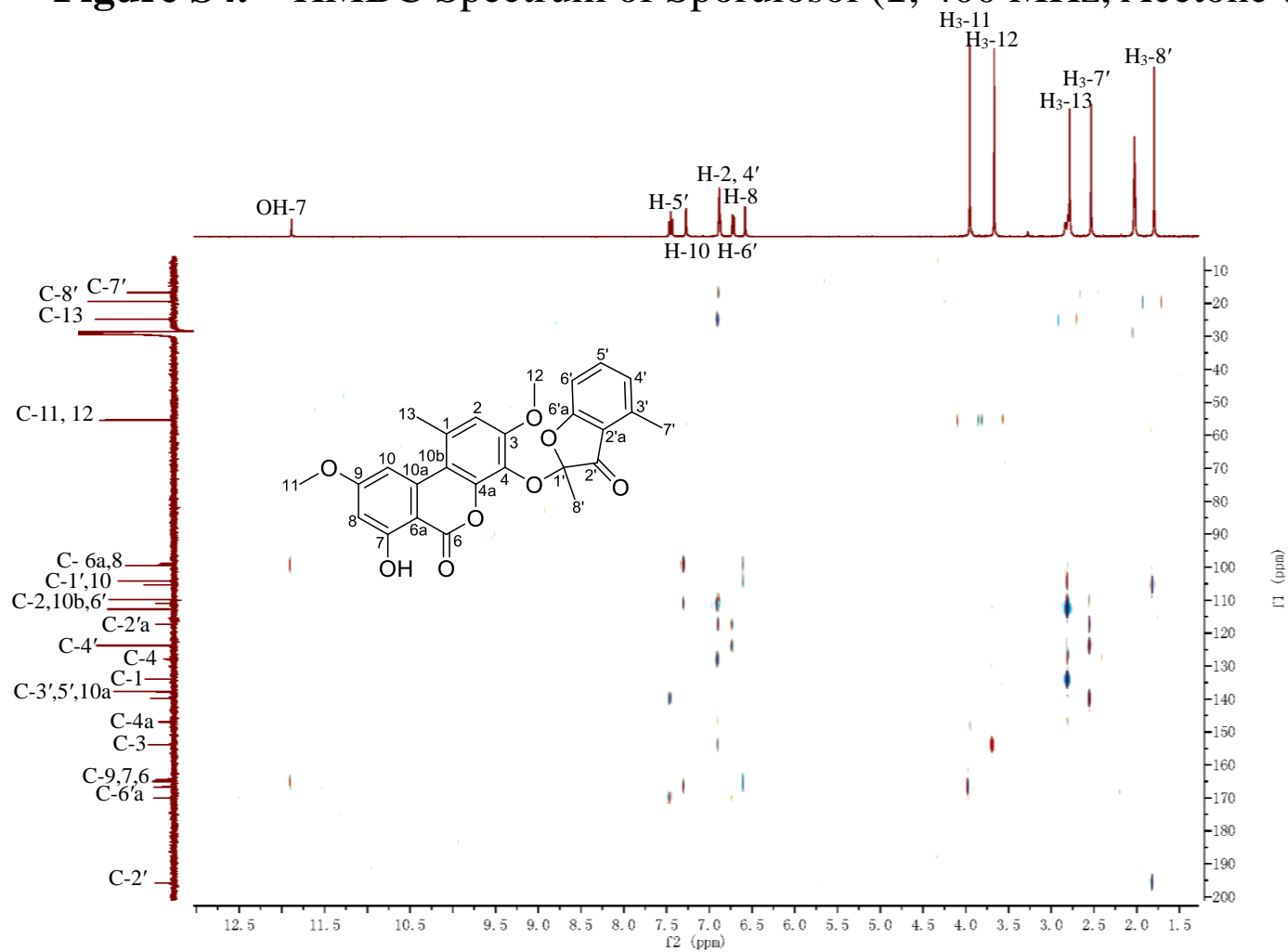


Figure S5. ^1H NMR Spectrum of Compound **2** (600 MHz, Acetone- d_6)

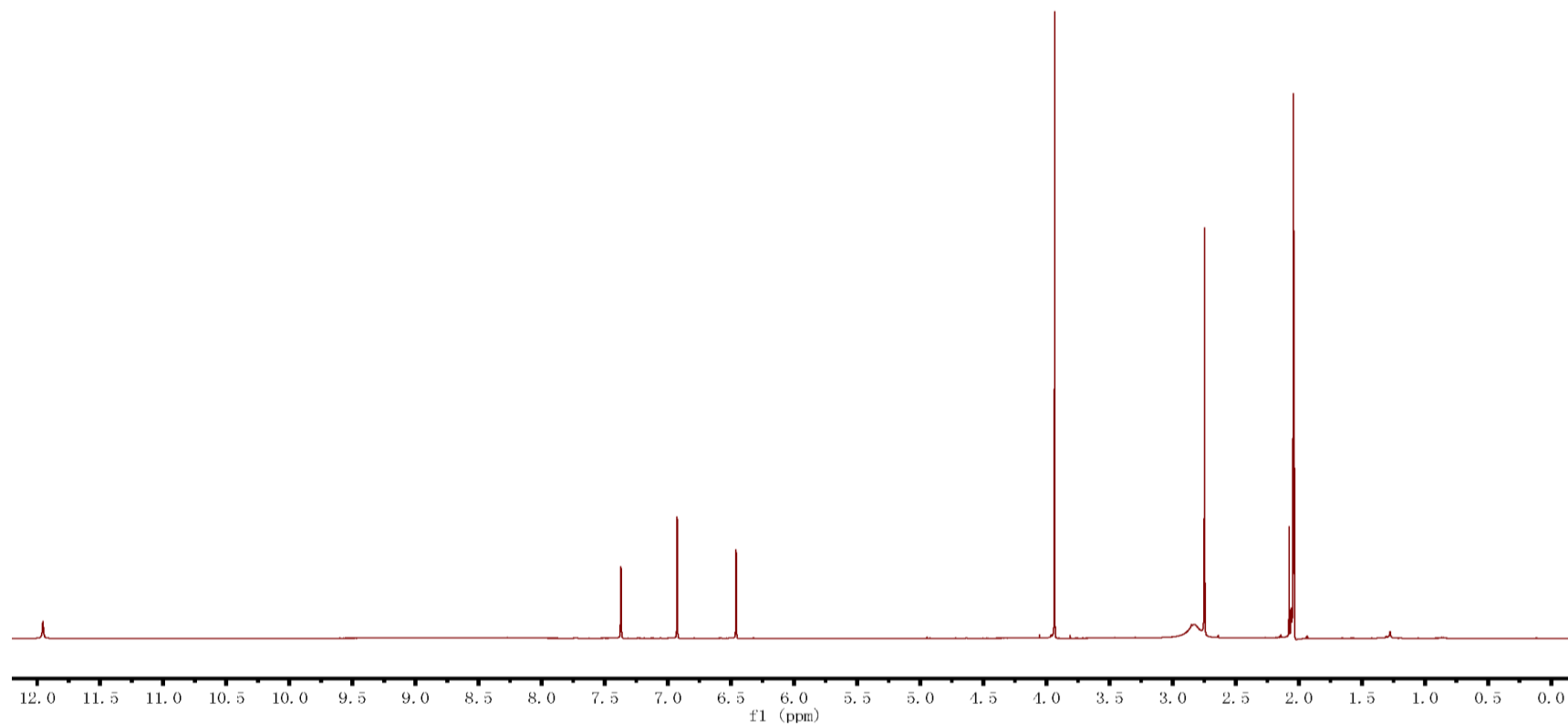


Figure S6. ^{13}C NMR Spectrum of Compound **2** (150 MHz, Acetone- d_6)

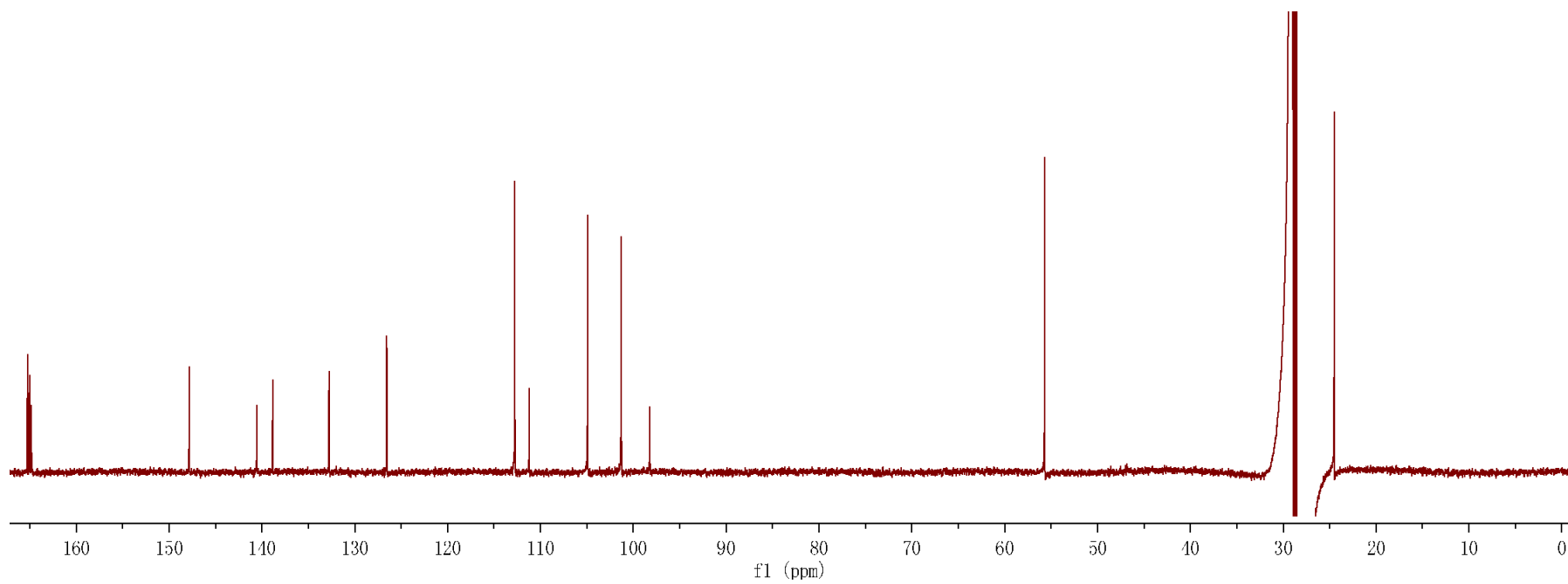
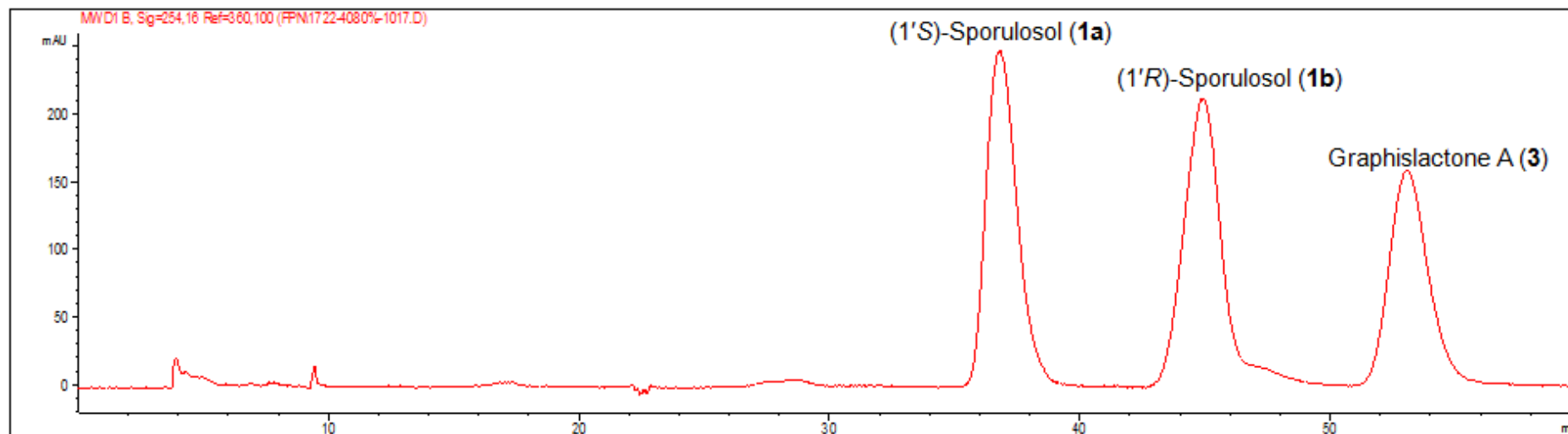
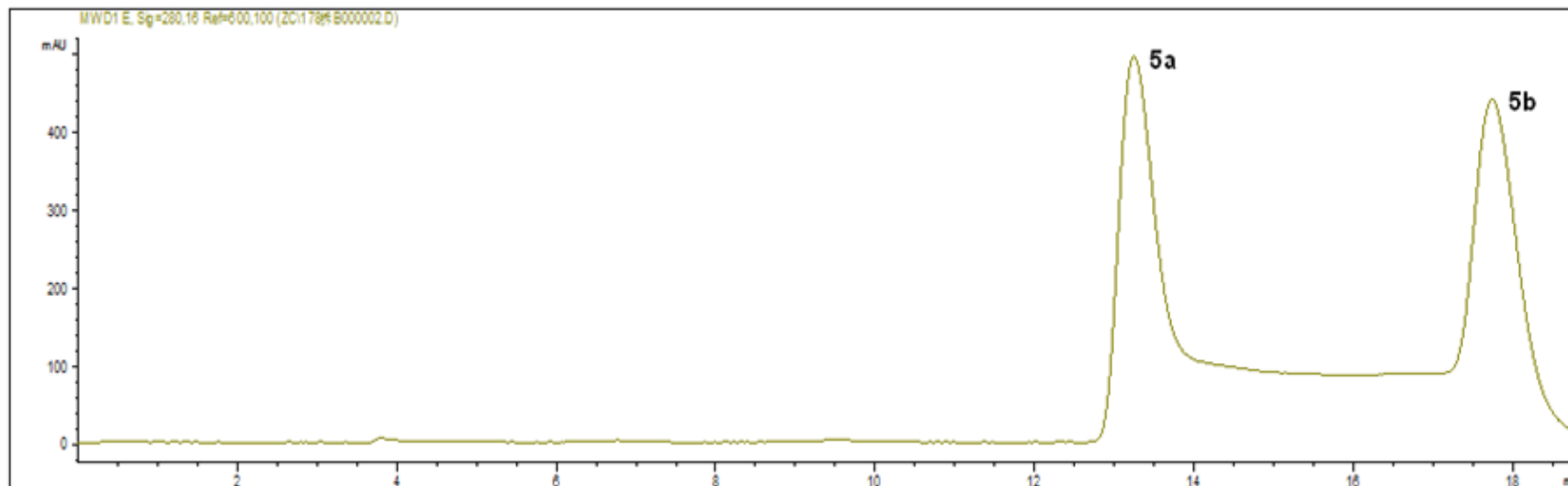


Figure S7. HPLC Chromatogram of Sporulosol (**1**) Using a CHIRALPAK AD-H Column



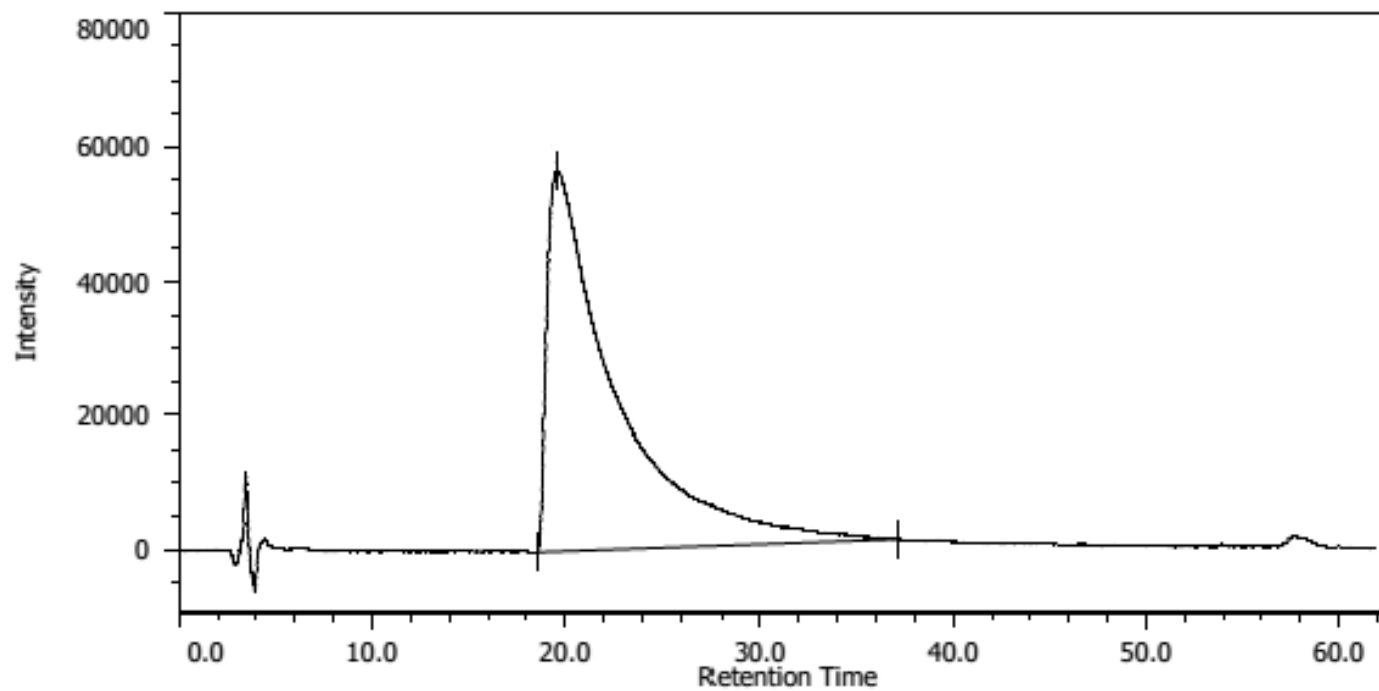
(4.6 × 250 mm; 4% 2-Propanol in Hexane for 60 min; 0.8 mL/min)

Figure S8. HPLC Chromatogram of Enalin A (**5**) Using a CHIRALPAK AD-H Column



(4.6 × 250 mm; 6% 2-Propanol in Hexane for 20 min; 0.8 mL/min)

Figure S9. HPLC-CD Chromatogram of Enalin A (**5**) Using a CHIRALPAK AD-H Column



(4.6 × 250 mm; 8% 2-Propanol in Hexane for 63 min; 1.0 mL/min)

Figure S10. HPLC–MS Analysis of the Crude Extract

