

# Supplementary Information

## Efficient Intracellular Delivery of Cell-impermeable Cargo Molecules by Peptides Containing Tryptophan and Histidine

Amir Nasrolahi Shirazi, Saghar Mozaffari, Rinzhin Tshering Sherpa, Rakesh Tiwari\*, and  
Keykavous Parang\*

Center for Targeted Drug Delivery, Department of Biomedical and Pharmaceutical Sciences, Chapman University  
School of Pharmacy, Harry and Diane Rinker Health Science Campus, Irvine, California 92618, United States

[nasro100@mail.chapman.edu](mailto:nasro100@mail.chapman.edu) (A.N.S.); [mozaf100@mail.chapman.edu](mailto:mozaf100@mail.chapman.edu) (S.M.); [sherp101@mail.chapman.edu](mailto:sherp101@mail.chapman.edu) (R.S.)  
[tiwari@chapman.edu](mailto:tiwari@chapman.edu) (R.T.); [parang@chapman.edu](mailto:parang@chapman.edu) (K.P.)

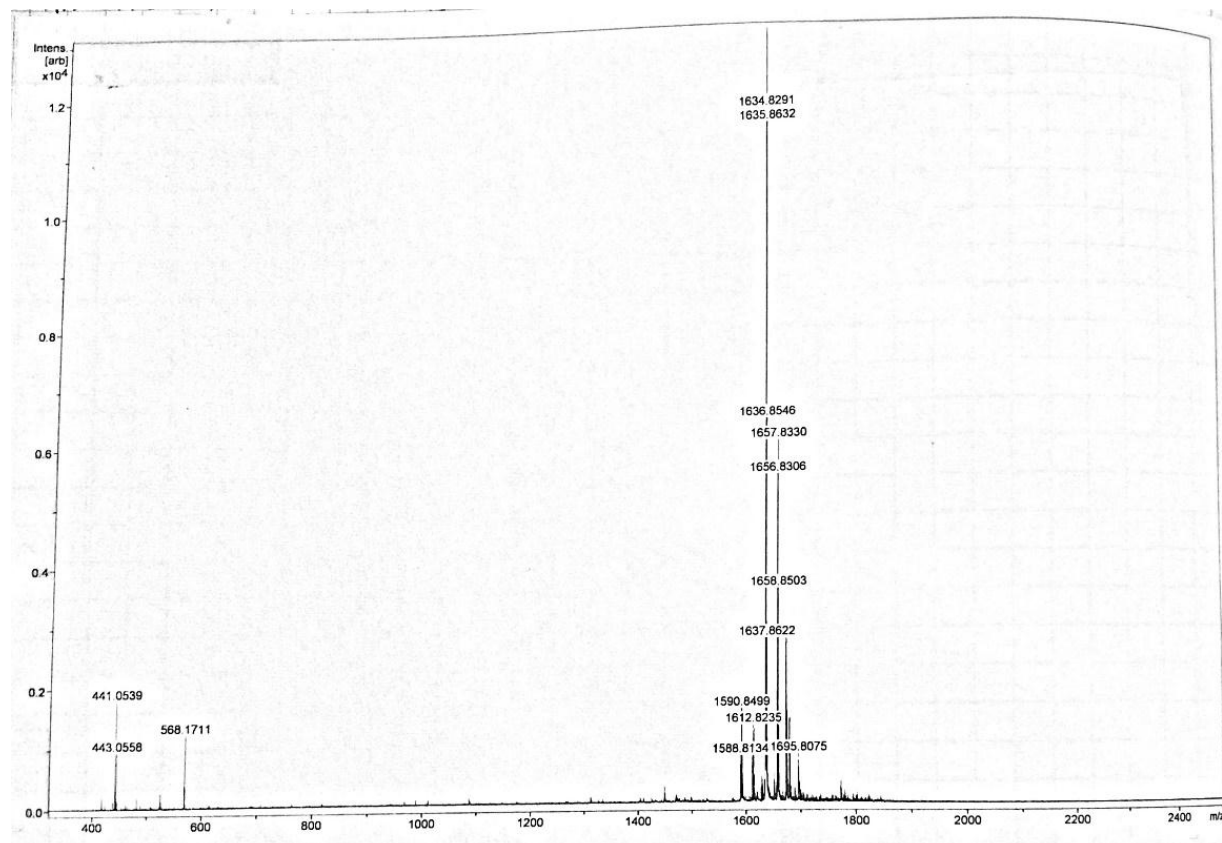
\* Correspondence: [parang@chapman.edu](mailto:parang@chapman.edu); Tel.: +1-714-516-5489

## Table of Contents:

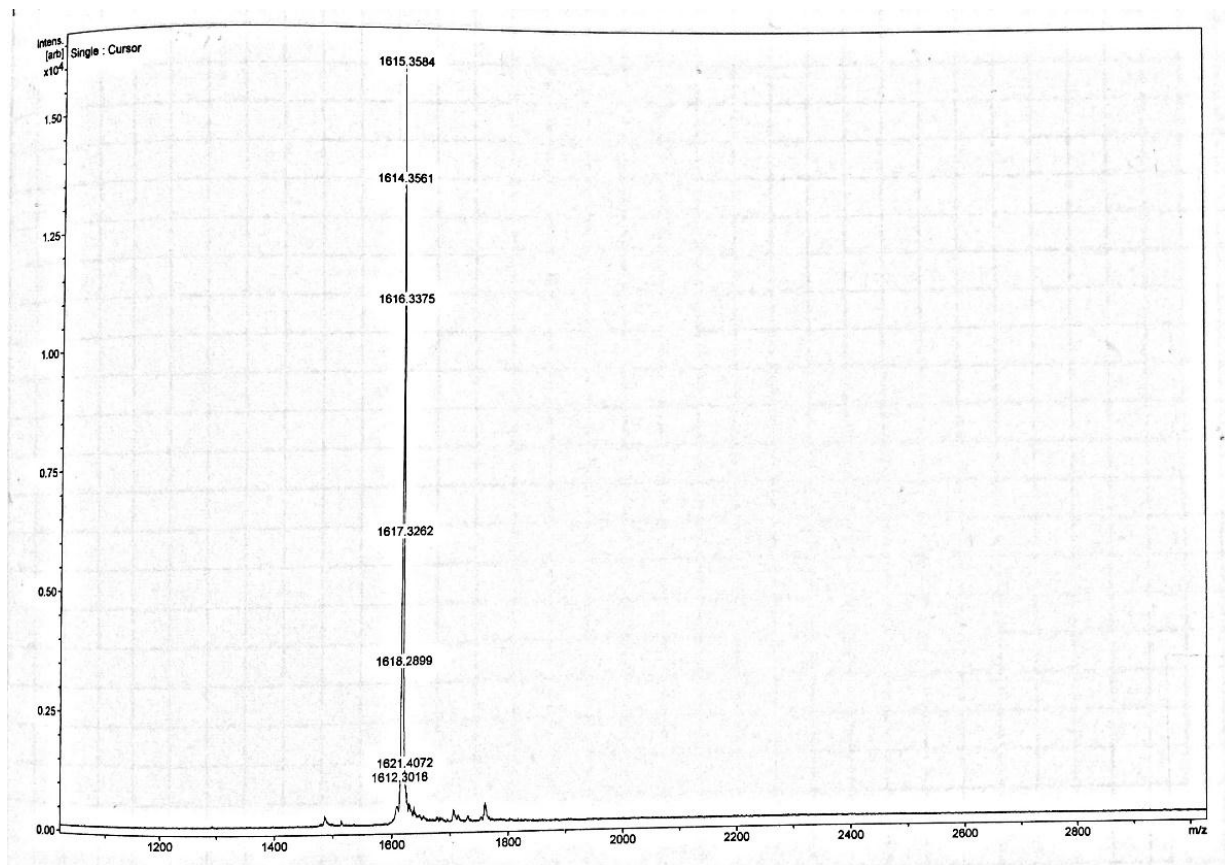
	<b>Page</b>
1. MALDI mass spectrum of linear and cyclic (WH) <sub>5</sub> peptides	<b>3</b>
2. Analytical HPLC chromatogram of linear and cyclic peptides, (WH) <sub>5</sub> and [WH] <sub>5</sub>	<b>5</b>

## 1. MALDI mass spectrum of linear and cyclic peptides

**Figure S1.** MALDI mass spectra of linear (WH)<sub>5</sub> peptide.

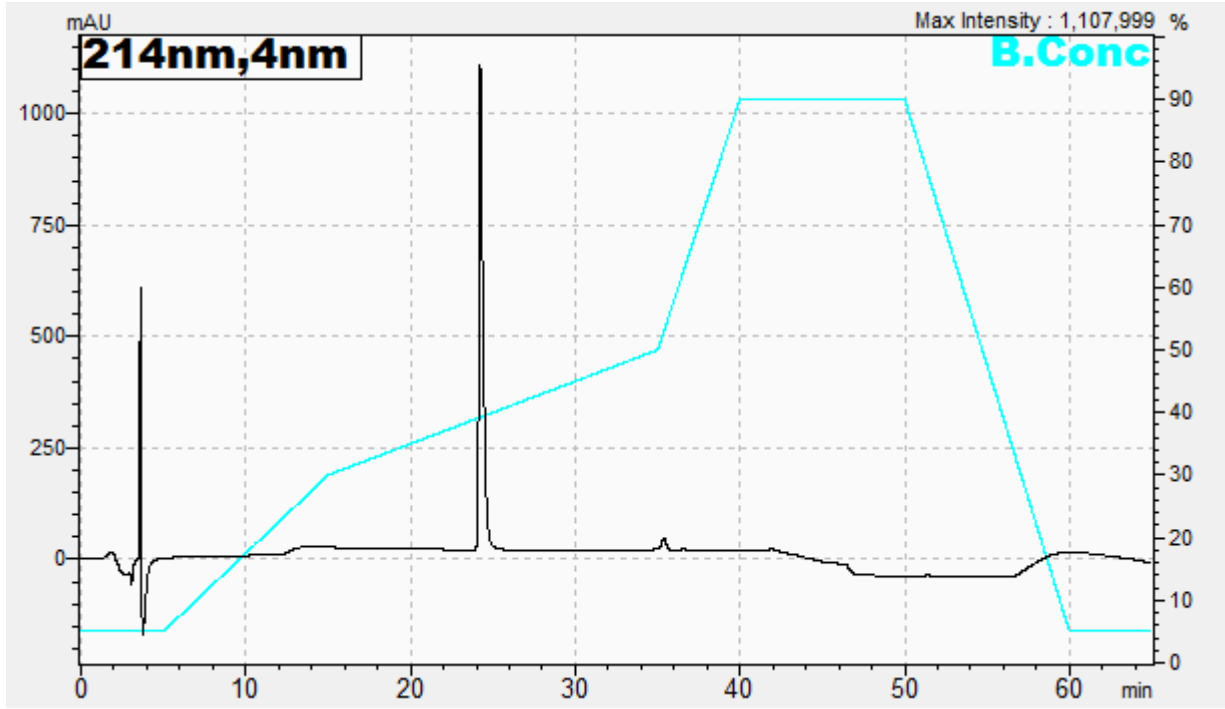


**Figure S2.** MALDI mass spectra of cyclic [WH]<sub>5</sub> peptide.



## 2. Analytical HPLC chromatogram of linear and cyclic peptides

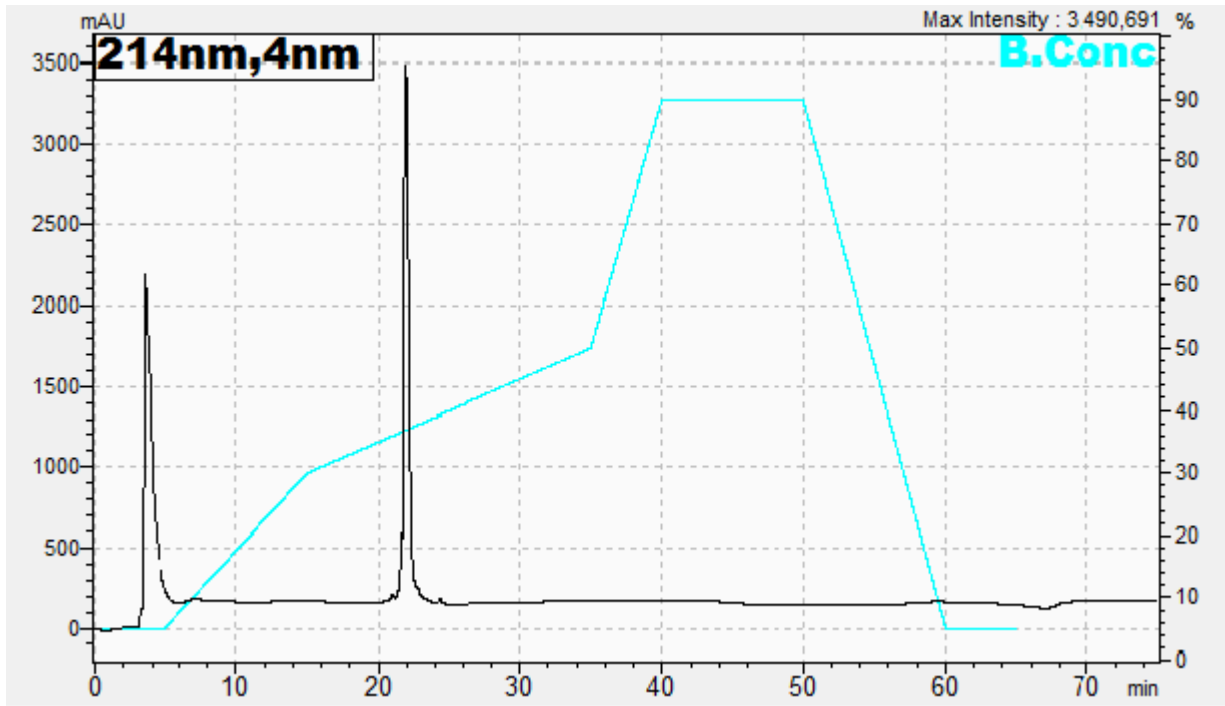
Figure S3. Analytical HPLC chromatogram of linear (WH)<sub>5</sub> peptide.



### HPLC Method:

	Time	Module	Command	Value
1	5.00	Pumps	Solvent B Conc.	5
2	15.00	Pumps	Solvent B Conc.	30
3	35.00	Pumps	Solvent B Conc.	50
4	40.00	Pumps	Solvent B Conc.	90
5	50.00	Pumps	Solvent B Conc.	90
6	60.00	Pumps	Solvent B Conc.	5
7	65.00	Controller	Stop	

**Figure S4.** Analytical HPLC chromatogram of cyclic [WH]<sub>5</sub> peptide.



**HPLC Method:**

	Time	Module	Command	Value
1	5.00	Pumps	Solvent B Conc.	5
2	15.00	Pumps	Solvent B Conc.	30
3	35.00	Pumps	Solvent B Conc.	50
4	40.00	Pumps	Solvent B Conc.	90
5	50.00	Pumps	Solvent B Conc.	90
6	60.00	Pumps	Solvent B Conc.	5
7	65.00	Controller	Stop	