

SUPPORTING INFORMATION

(+)-*epi*-Epoformin, a phytotoxic fungal cyclohexenepoxide: Structure activity relationships

Antonio Cala^{1,†}, Marco Masi^{2,†}, Alessio Cimmino², José M.G. Molinillo¹, Francisco A. Macias¹ and Antonio Evidente²

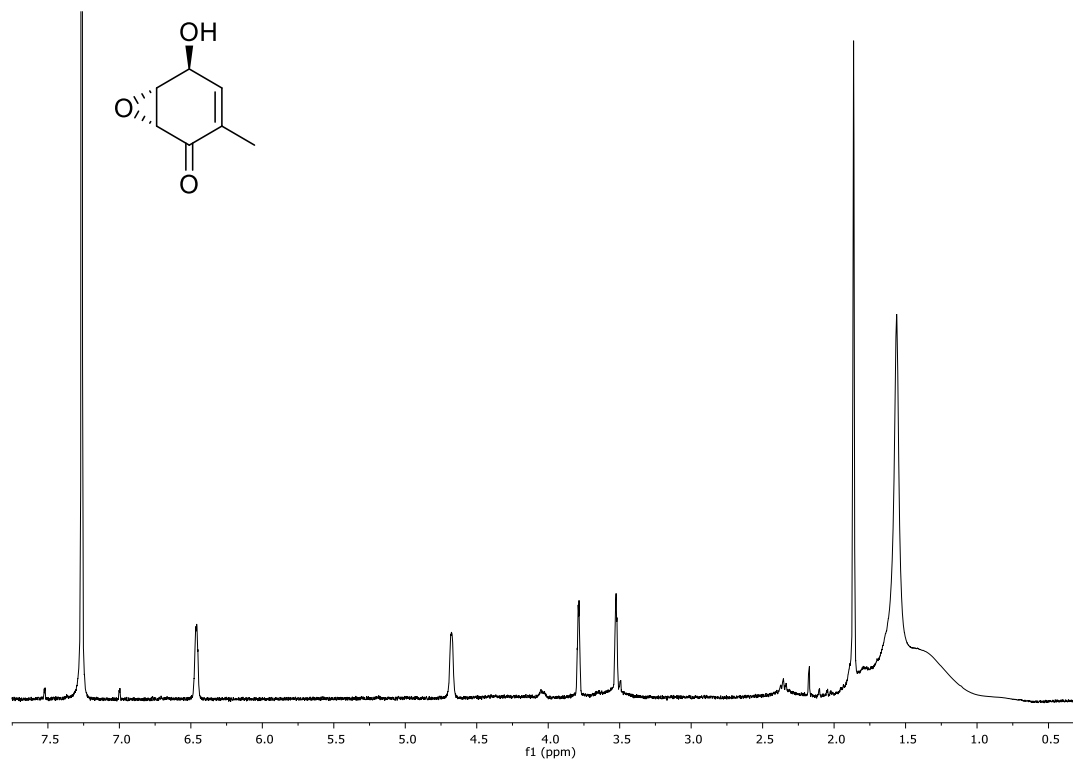
- 1 Allelopathy Group, Department of Organic Chemistry, School of Science, Institute of Biomolecules (INBIO), University of Cádiz, C/ República Saharaui 7, 11510-Puerto Real, Cádiz, Spain; antonio.cala@uca.es (A.C.); chema.gonzalez@uca.es (J.M.G.M.), famacias@uca.es (F.A.M.).
- 2 Department of Chemical Sciences, University of Naples "Federico II", Complesso Universitario Monte S. Angelo, Via Cintia 4, 80126 Napoli, Italy; marco.masi@unina.it (M.M.); alessio.cimmino@unina.it (A.C.), evidente@unina.it (A.E.).

[†] These authors contributed equally to this work.

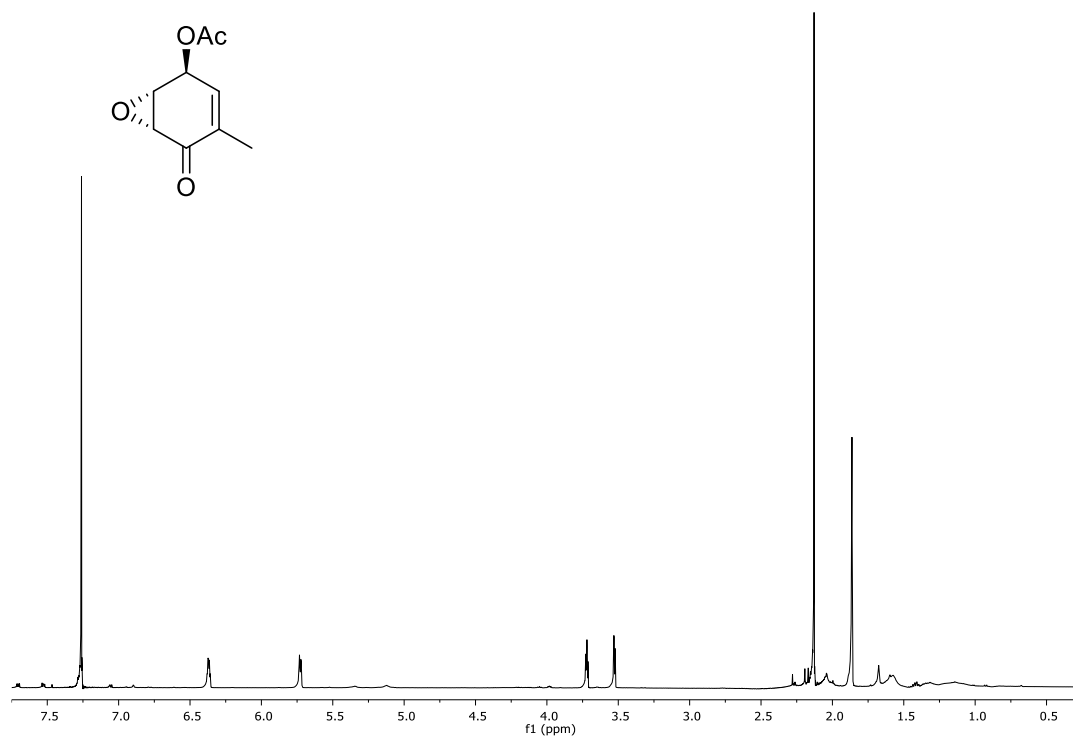
*Correspondence:

Table of Contents

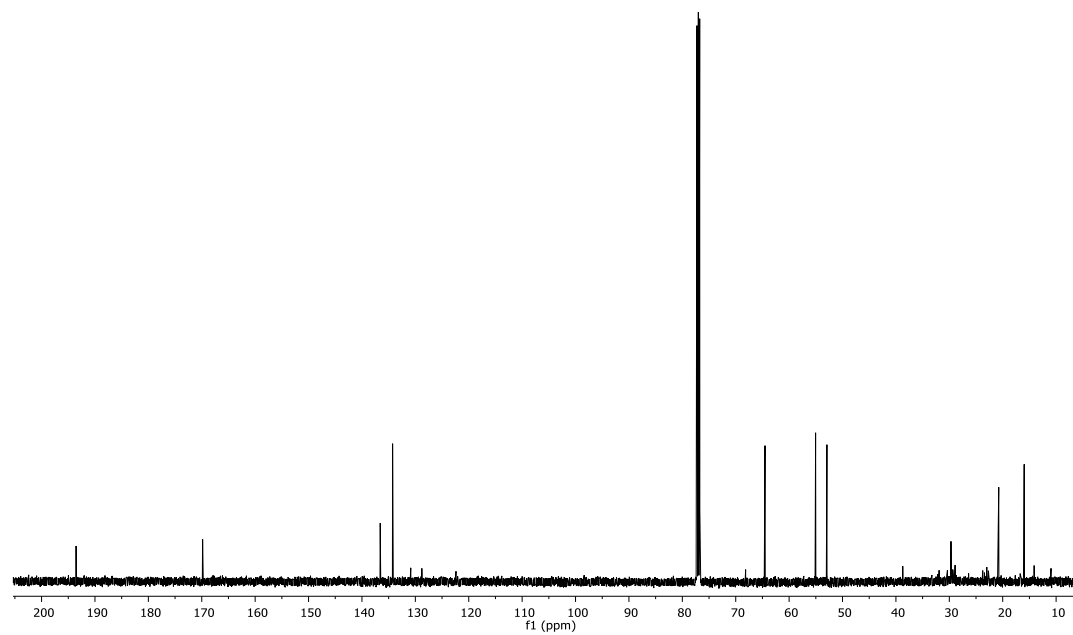
S3.	¹ H NMR Spectrum of 1
S4.	¹ H and ¹³ C NMR Spectra of 2
S5.	¹ H and ¹³ C NMR Spectra of 3
S6.	¹ H and ¹³ C NMR Spectra of 4
S7.	¹ H and ¹³ C NMR Spectra of 5
S8.	¹ H and ¹³ C NMR Spectra of 6
S9.	¹ H and ¹³ C NMR Spectra of 7
S10.	¹ H and ¹³ C NMR Spectra of 8
S11.	¹ H and ¹³ C NMR Spectra of 9



$^1\text{H-NMR}$ Spectrum of **1** (400MHz, CDCl_3)

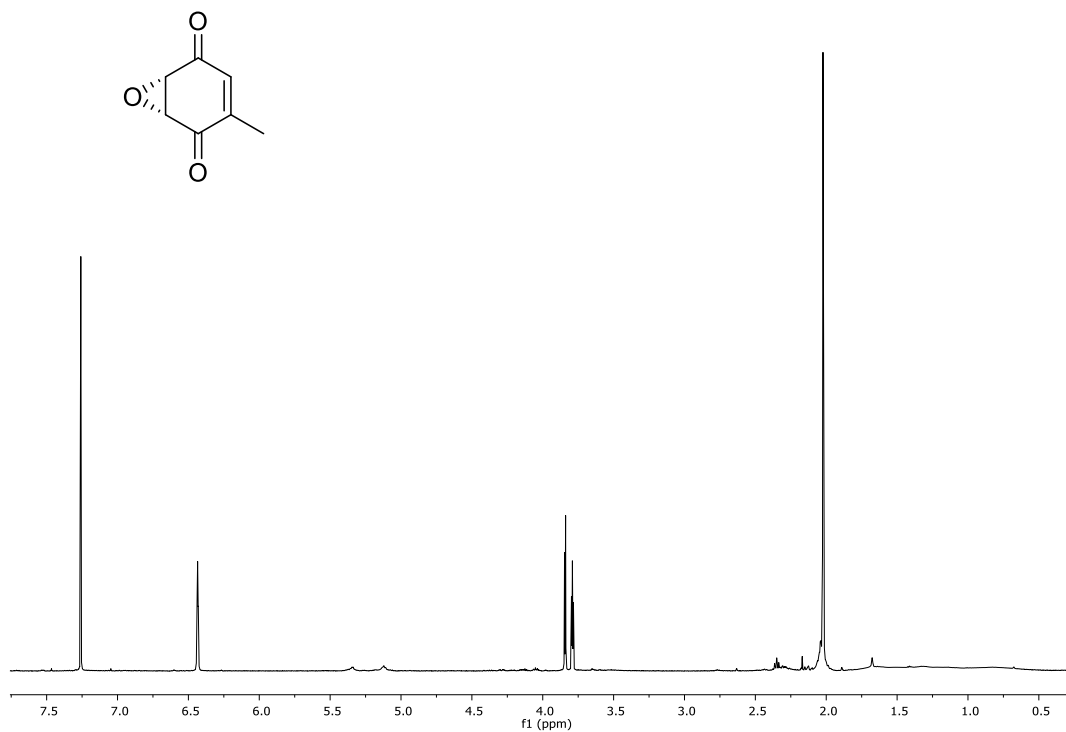


¹H-NMR Spectrum of 2 (500MHz, CDCl₃)

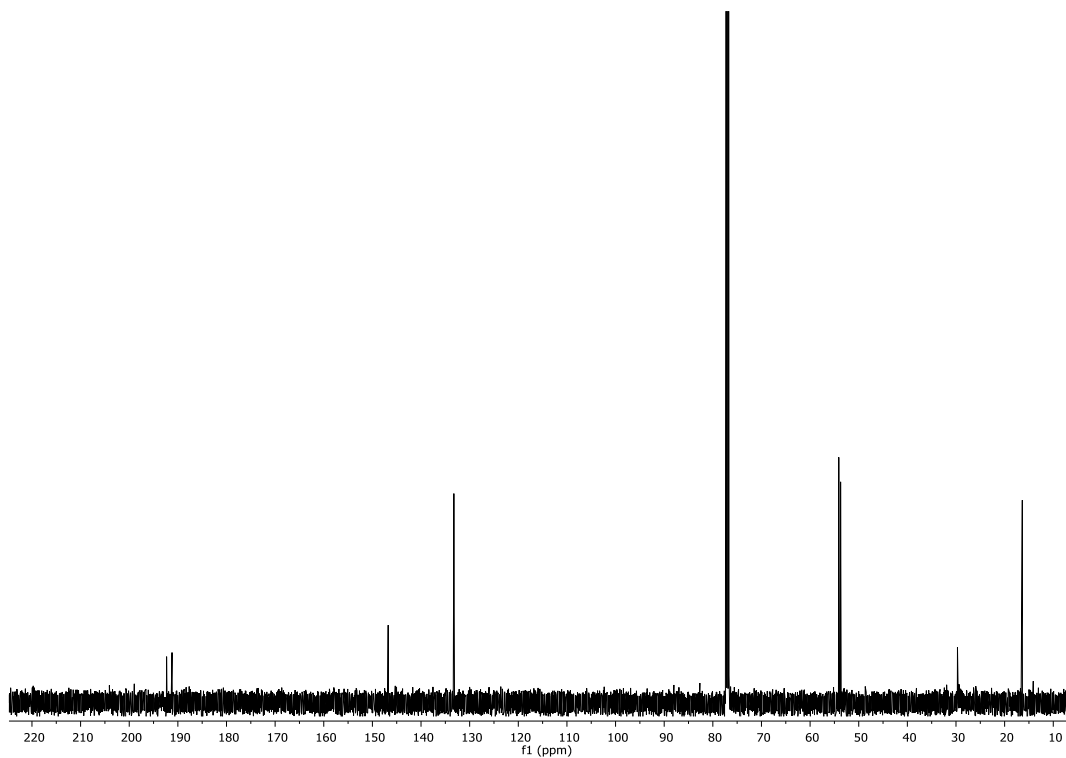


¹³C-NMR Spectrum of 2 (125MHz, CDCl₃)

(+)-*epi*-Epoformin, a phytotoxic fungal cyclohexenepoxide: Structure activity relationships

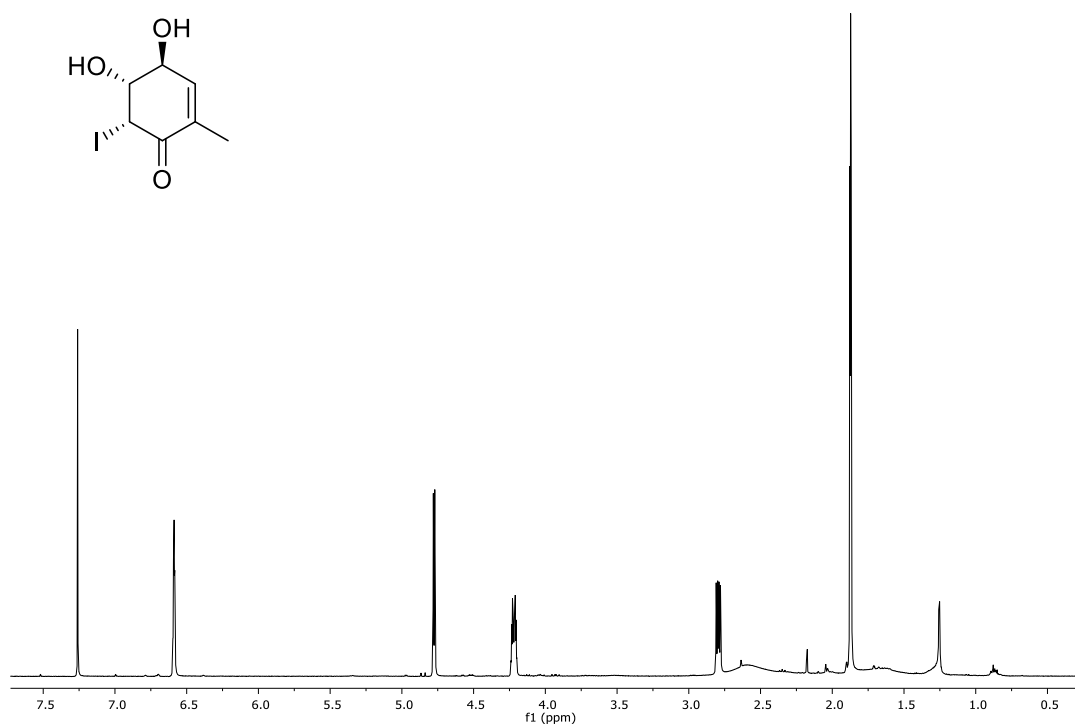


¹H-NMR Spectrum of **3** (500MHz, CDCl₃)

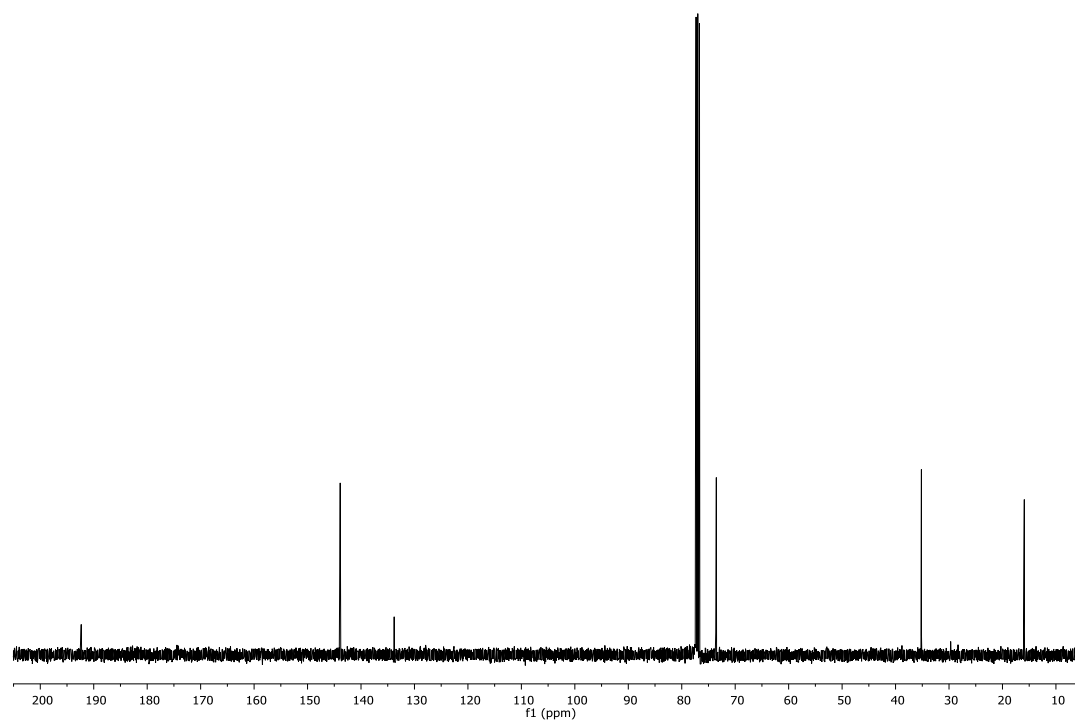


¹³C-NMR Spectrum of **3** (125MHz, CDCl₃)

(+)-*epi*-Epoformin, a phytotoxic fungal cyclohexenepoxide: Structure activity relationships

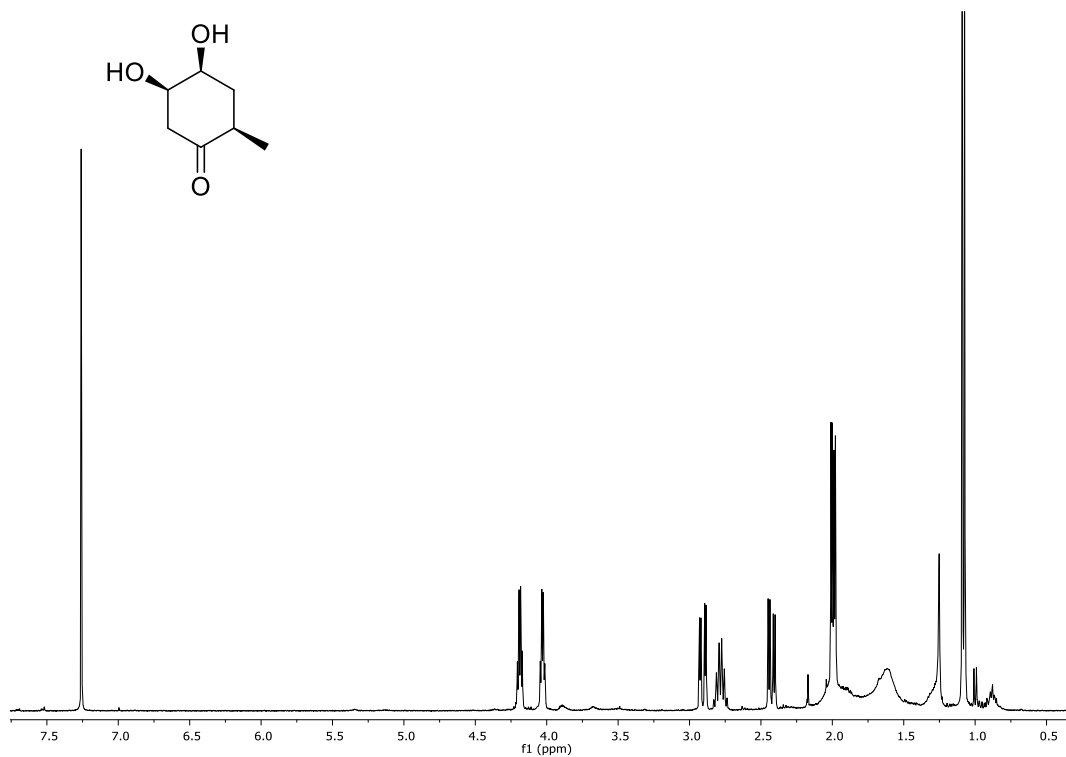


¹H-NMR Spectrum of **4** (400MHz, CDCl₃)

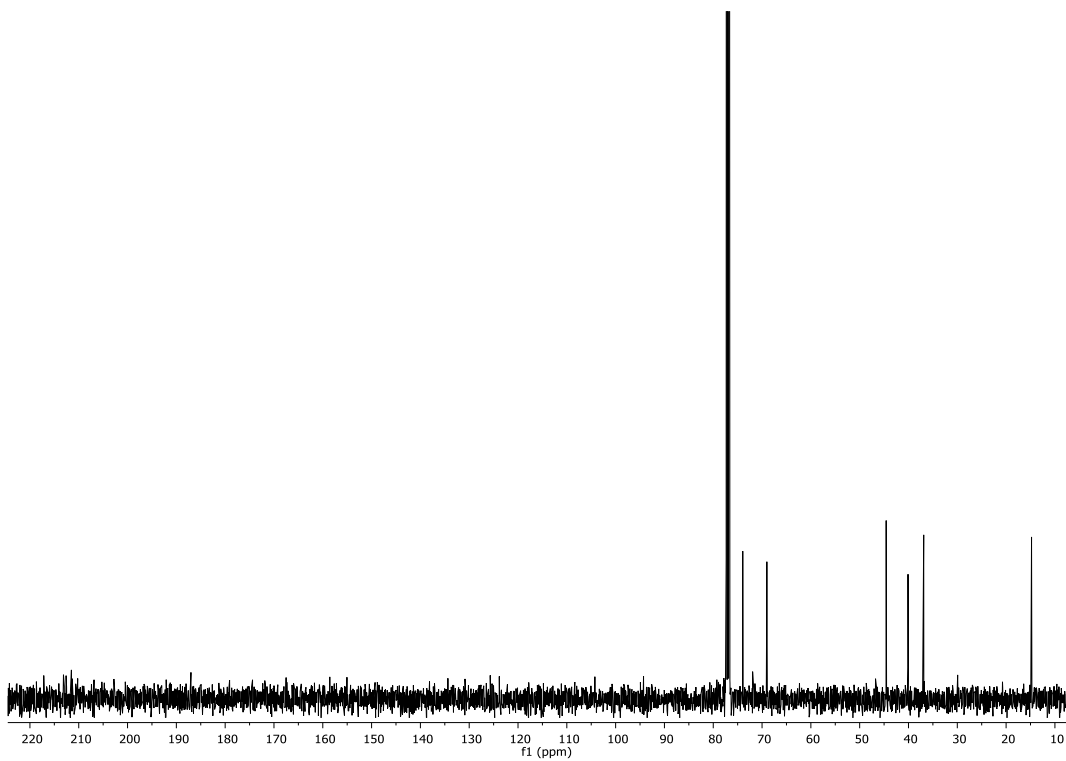


¹³C-NMR Spectrum of **4** (100MHz, CDCl₃)

(+)-*epi*-Epoformin, a phytotoxic fungal cyclohexenepoxide: Structure activity relationships

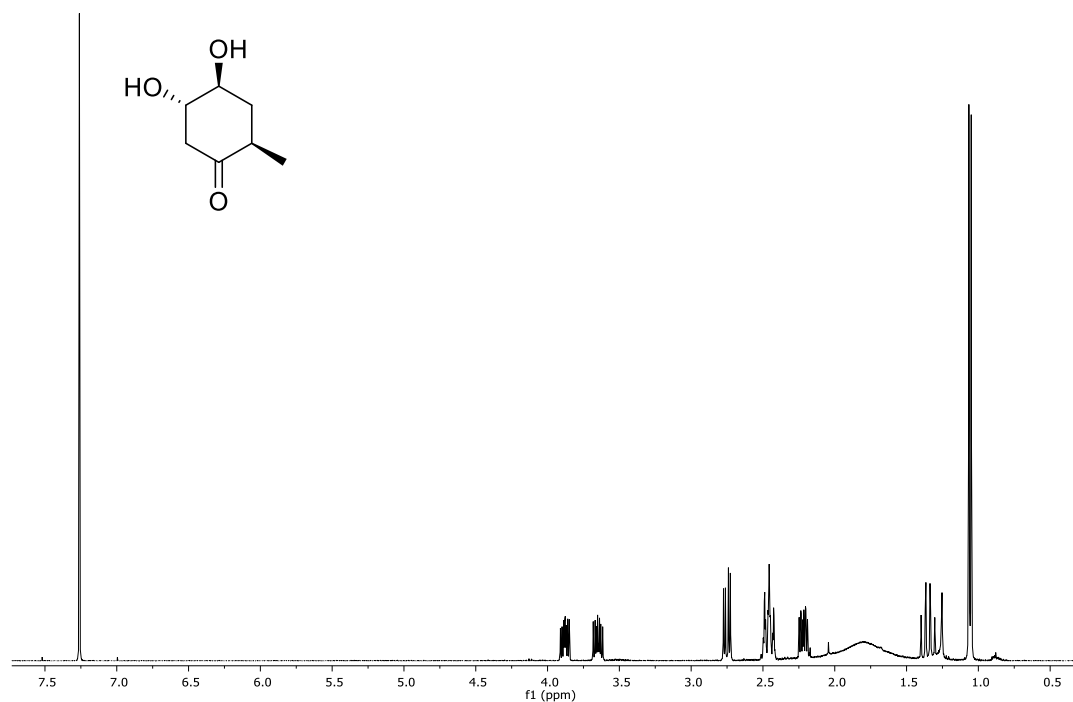


¹H-NMR Spectrum of 5 (500MHz, CDCl₃)

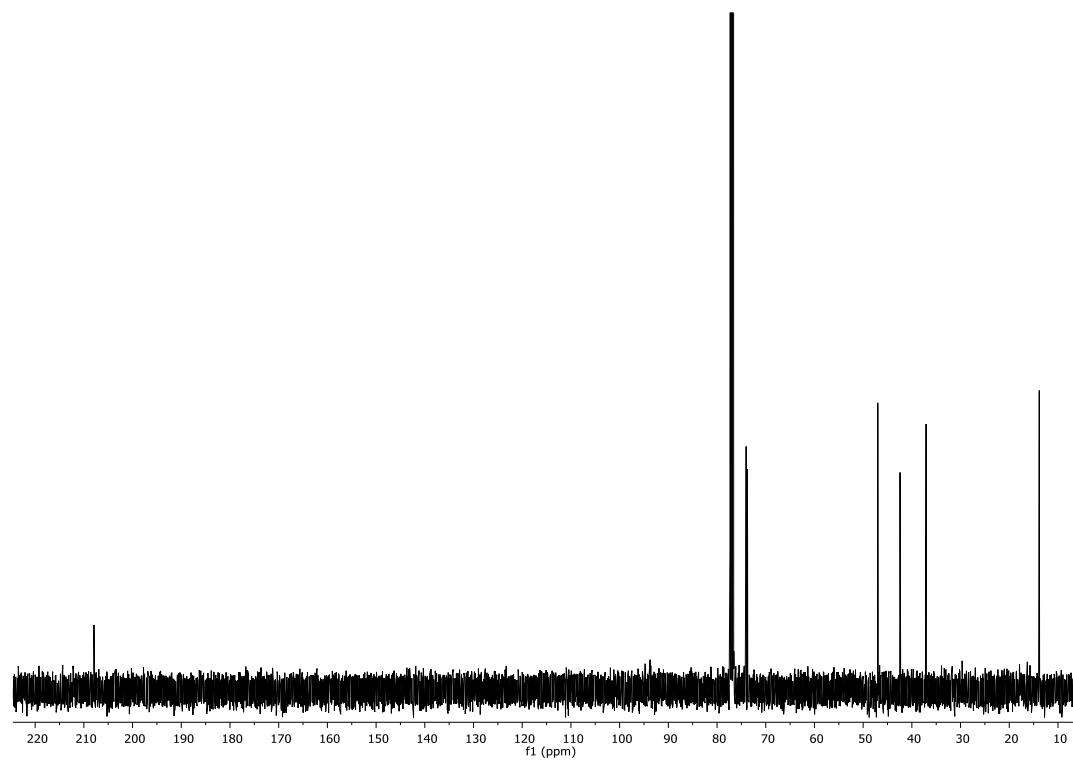


¹³C-NMR Spectrum of 5 (125MHz, CDCl₃)

(+)-*epi*-Epoformin, a phytotoxic fungal cyclohexenepoxide: Structure activity relationships

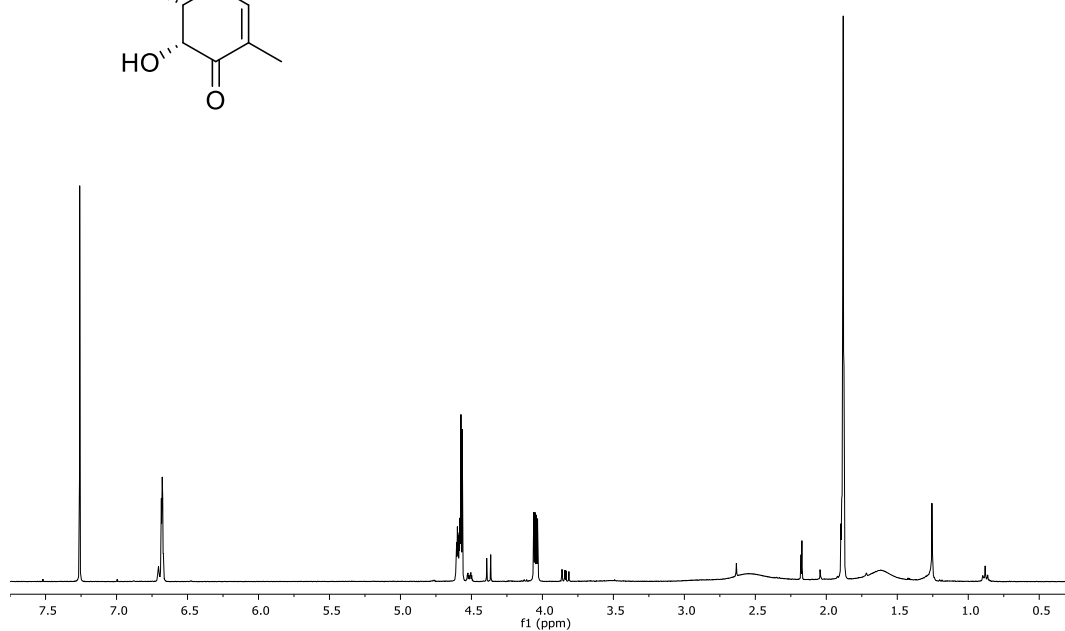
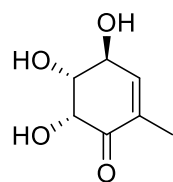


¹H-NMR Spectrum of **6** (400MHz, CDCl₃)

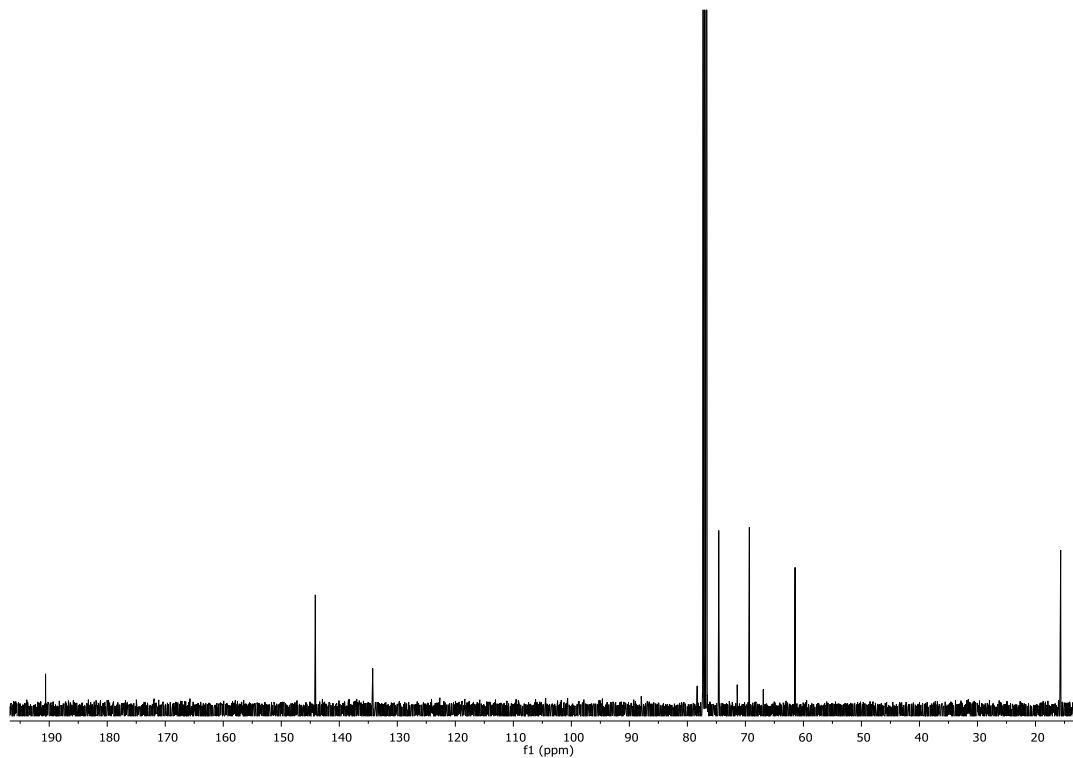


¹³C-NMR Spectrum of **6** (100MHz, CDCl₃)

(+)-*epi*-Epoformin, a phytotoxic fungal cyclohexenepoxide: Structure activity relationships

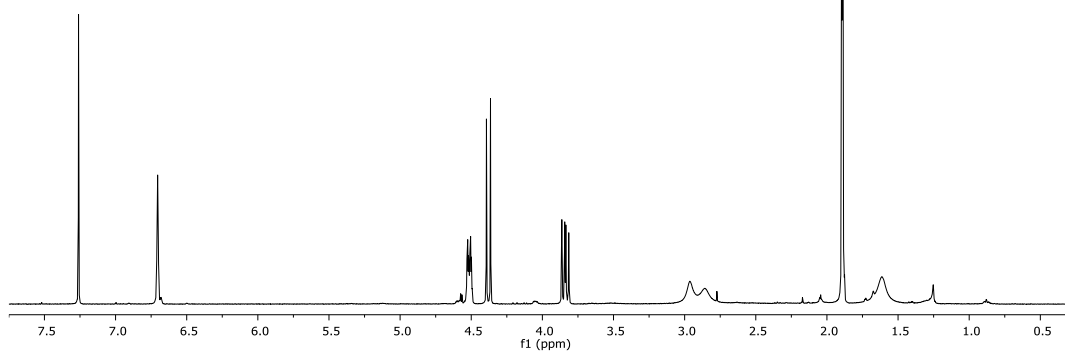
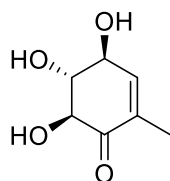


$^1\text{H-NMR}$ Spectrum of 7 (400MHz, CDCl_3)

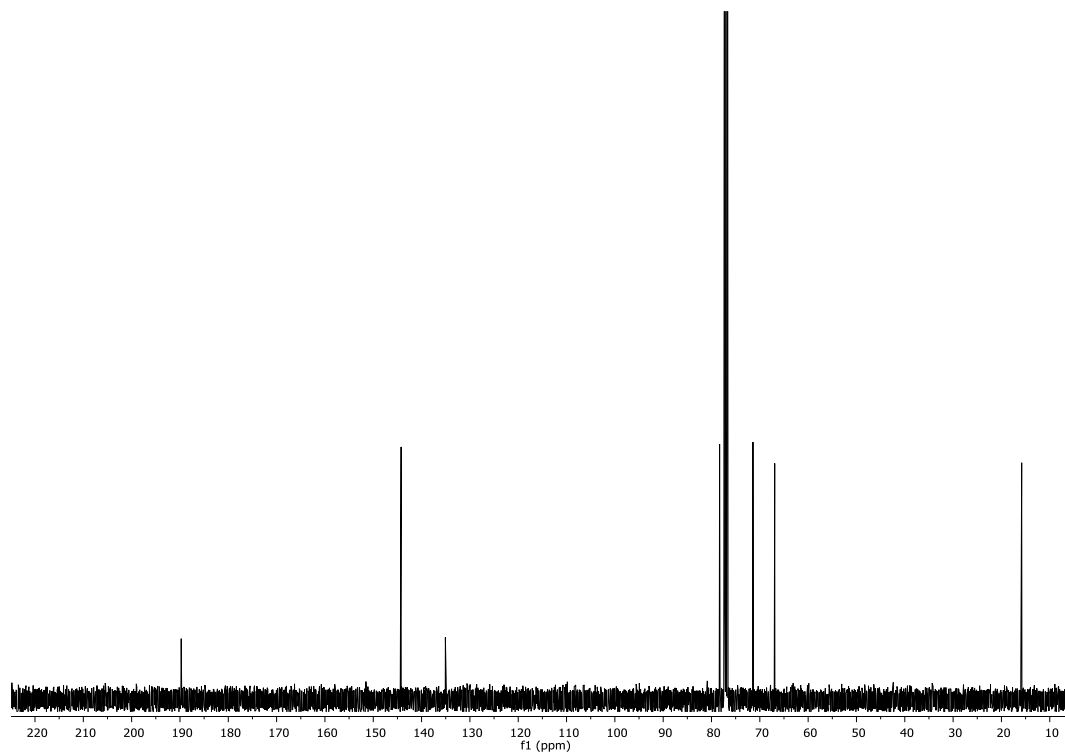


$^{13}\text{C-NMR}$ Spectrum of 7 (100MHz, CDCl_3)

(+)-*epi*-Epoformin, a phytotoxic fungal cyclohexenepoxide: Structure activity relationships

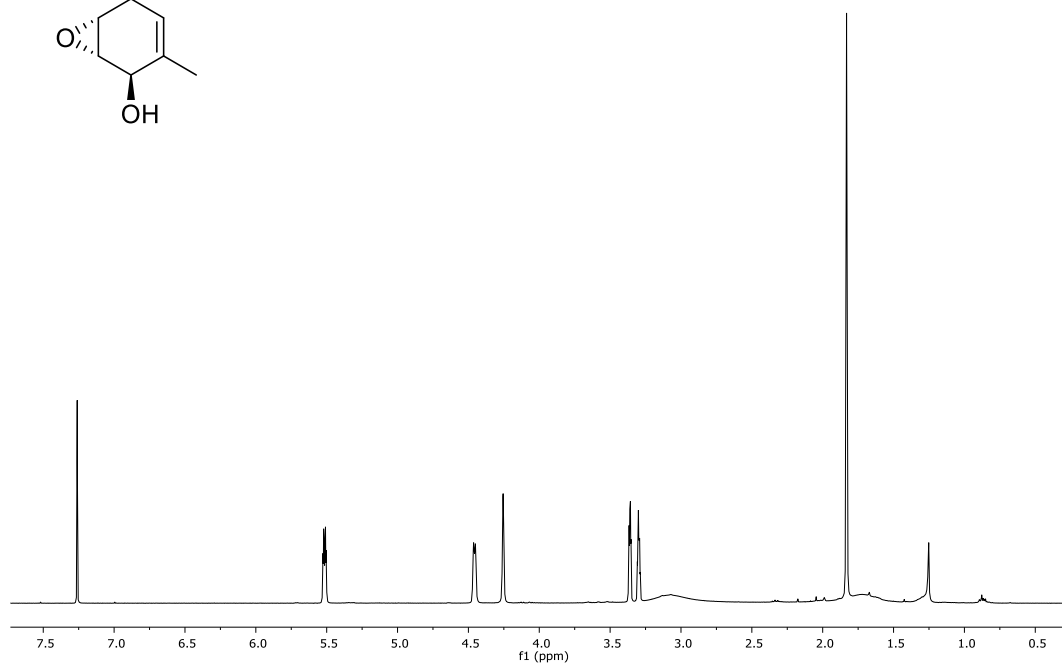
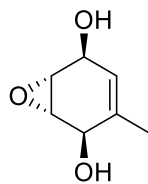


¹H-NMR Spectrum of 8 (400MHz, CDCl₃)

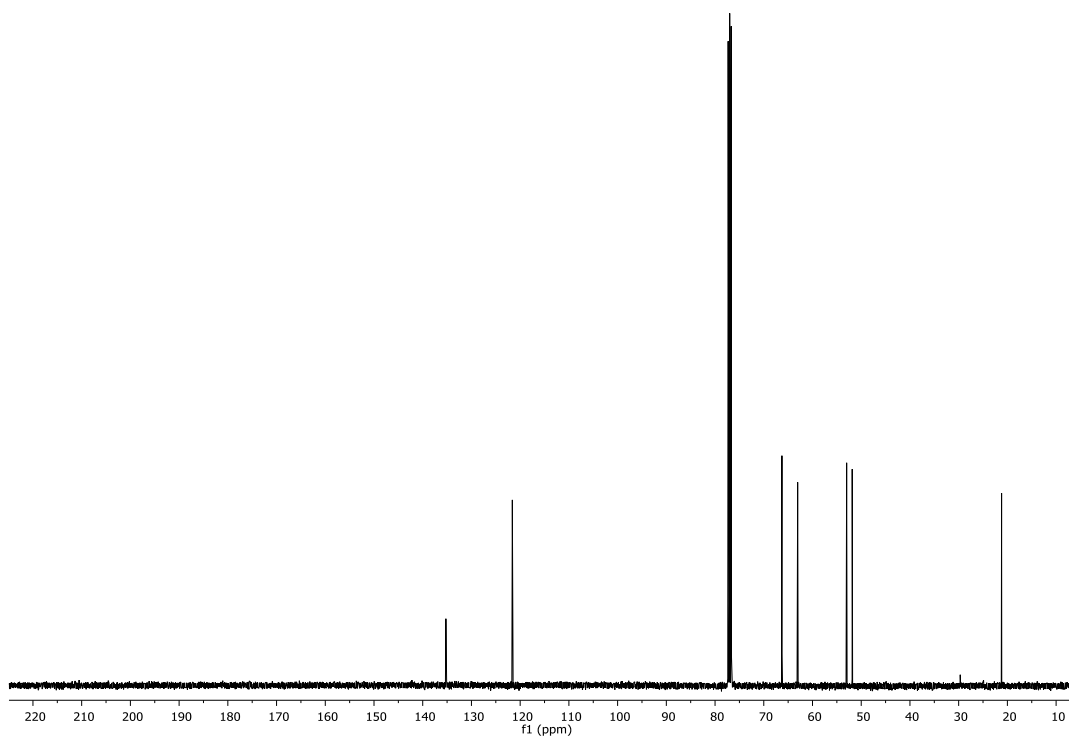


¹³C-NMR Spectrum of 8 (100MHz, CDCl₃)

(+)-*epi*-Epoformin, a phytotoxic fungal cyclohexenepoxide: Structure activity relationships



$^1\text{H-NMR}$ Spectrum of **9** (400MHz, CDCl_3)



$^{13}\text{C-NMR}$ Spectrum of **9** (100MHz, CDCl_3)

(+)-*epi*-Epoformin, a phytotoxic fungal cyclohexenepoxide: Structure activity relationships