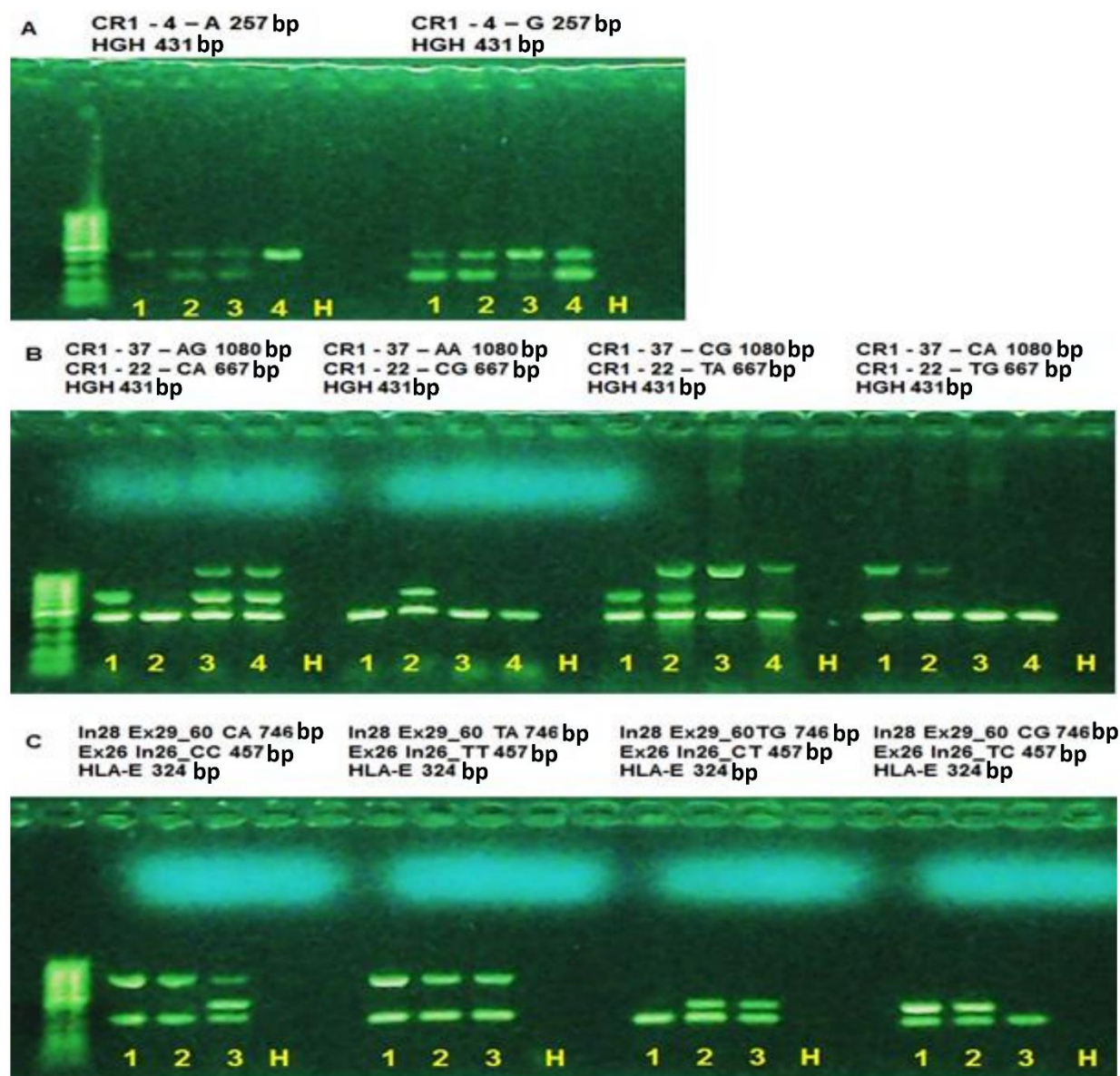


## ELECTRONIC SUPPLEMENTARY MATERIAL



**S1 Figure.** Simple PCR-SSP and Multiplex PCR-SSP results of *CR1* SNPs.

**A-** PCR-SSP for rs6656401 (*I:g.207518704A>G*) (specific fragment of 257 bp): 1) *G/G*, 2) *A/G*, 3) *A/G*, 4) *G/G*. **B.** PCR-SSP for rs3849266 (*I:g.207579645C>T*), rs2274567 (*I:g.207580276A>G*) (specific fragment of 667 bp) and rs4844610 (*I:g.207629207A>C*), rs12034383 (*I:g.207630250G>A*). (specific fragment of 1080 bp): 1) *CACA/TACA*; 2) *CGCG/TACA*; 3) *CAAG/CACG*; and 4) *CAAG/CACG*. **C.** PCR-SSP for rs3737002 (*I:g.207587428C>T*), rs11118131 (*I:g.207587851C>T*), (specific fragment of 457 bp); rs11118167 (*I:g.207608809T>C*), rs17047660 (*I:g.207609511A>G*): 1) (specific fragment of 746 bp): 1) *TCCA/TCTA*; 2) *CTCA/TCTA*; and 3) *CCCA/CTTA*. H: negative controls (complete reactions without DNA); bp: base pairs; HGH: Human Growth Hormone (as internal PCR control fragment of 431 bp for A and B); *HLA-E*: Human Leukocyte Antigen – E (as internal PCR control fragment of 324 bp).