

OMTM, Volume 10

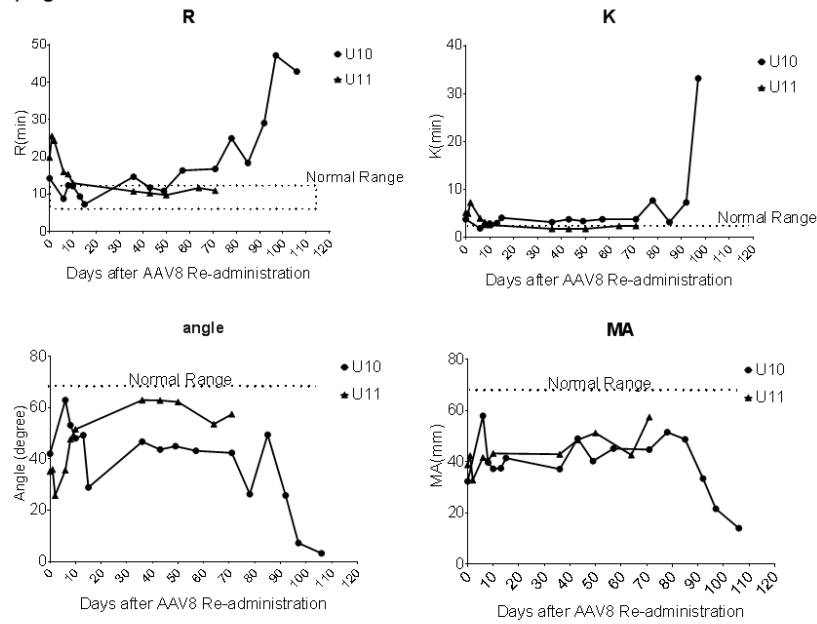
Supplemental Information

An Observational Study from Long-Term AAV

Re-administration in Two Hemophilia Dogs

Junjiang Sun, Wenwei Shao, Xiaojing Chen, Elizabeth P. Merricks, Lauren Wimsey, Yasmina L. Abajas, Glenn P. Niemeyer, Clinton D. Lothrop, Paul E. Monahan, R. Jude Samulski, Timothy C. Nichols, and Chengwen Li

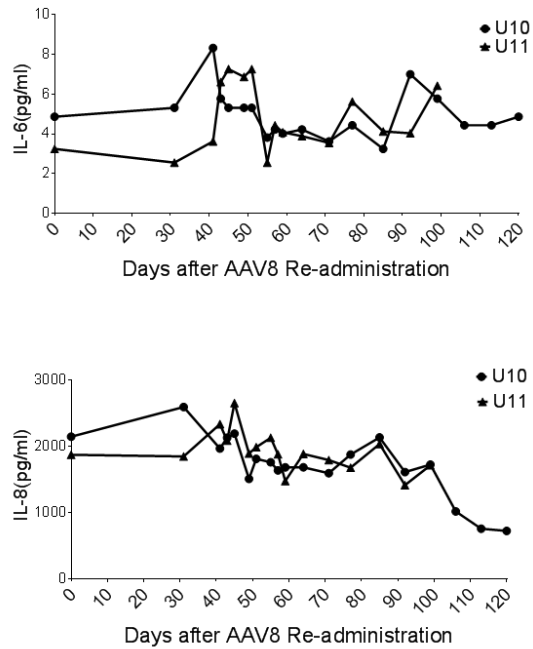
Supplementary Figure 1



Supplemental Figure 1. Thromboelastography analysis after AAV8/hFVIII re-administration.

Thromboelastometry analysis was performed at the defined time points after AAV8/hFVIII re-administration in hemophilia dogs U10 and U11. **(A)** Reaction time in minutes, **(B)** Kinetics time in minutes, **(C)** α angle in degree, and **(D)** maximum clot firmness in mm. Dashed lines represented the normal range of each parameter.

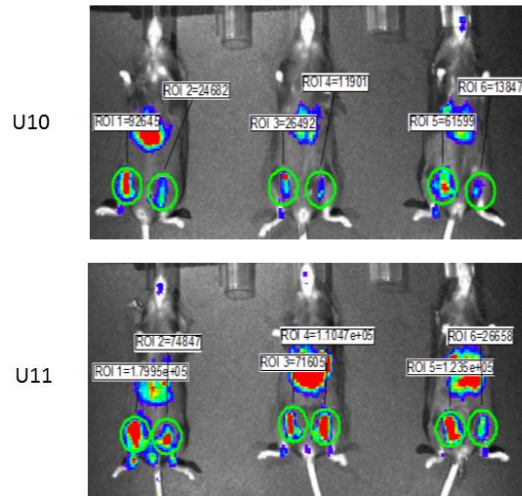
Supplementary Figure 2



Supplemental Figure 2. The change of other cytokines IL-6, IL-8 after AAV8/hFVIII re-administration

Dynamic changes of cytokines **IL-6 (A)**, **IL-8 (B)** were examined on the Luminex MAGPIX system from the plasma of the hemophilia dogs U10 and U11 after AAV8/hFVIII re-administration. Cytokines, IL-2, IL-18 and TNF- α were undetectable in most of the time points in both dogs U10 and U11.

Supplementary Figure 3



Supplementary Figure 3. Mouse imaging for luciferase expression

Dog	Weight(kg)	Time	ALK		SGPT(U/L)	SGOT(U/L)	Tot		Urea	Creat(mg/dL)		Total	Alb(d/dL)	Glu(mg/dL)	Chol(mg/dL)	Ca+(mg/dL)	P(mg/dL)	Na+(mEq/L)	K+(mEq/L)	Chl(mEq/L)	Alb/ Glob	Glob(g/dL)	PSL(U/L)	Triglyc(mg/dL)	GGTP(U/L)	
			CPK(U/L)	PHOS(U/L)			Bili(mg/mL)	Amyl(U/L)		N(mg/dL)	BUN/ Creat														Protein(g/L)	Mg+(mEq/L)
			59-895	5-131	12-118	15-66	0.1-0.3	290-1125	6.0-25	0.5-1.6	4.0-27	5.0-7.4	2.7-4.4	70-136	92-324	8.9-11.4	2.5-6.0	139-154	3.6-5.5	102-120	0.8-2.0	1.6-3.6	24-140	29-291	1.0-12	1.5-2.5
U10	23.7	Baseline 1	101	30	46	33	0.1	669	14	0.8	18	5.6	2.9	96	241	9.5	3.7	144	4.3	111	1.1	2.7	52	59	1	1.7
		Day 0	128	44	50	42	0.1	767	18	1.1	16	5.7	3	111	295	9.3	3.1	148	4.3	115	1.1	2.7	58	55	1	1.9
		4hr post-	128	43	49	37	0.1	721	15	1.1	14	5.1	2.8	94	269	9.2	3.8	149	4.6	116	1.2	2.3	51	42	2	1.5
		78	102	47	36	34	0.1	572	17	1.1	15	6.4	3.1	108	330 H	9.6	2.6	150	4.1	110	0.9	3.3	41	56	3	1.7
		85	84	46	34	34	0.1	498	16	1	16	5.9	2.9	92	348 H	8.6 L	3.1	145	4.2	112	1	3	56	63	3	1.6
		92	58 L	44	34	30	0.1	483	13	1	13	5.8	2.9	90	344 H	8.4 L	2.9	148	4.2	114	1	2.9	53	47	3	1.6
		99	108	47	34	32	0.1	459	16	1.2	13	5.9	3.9	106	397 H	8.6 L	3	151	4.3	116	1	3	58	47	3	1.7
U11	24.6	baseline	100	26	20	28	0.1	607	20	1.1	18	5.9	3.2	98	315	9	4.1	150	4.6	114	1.2	2.7	189 H	70	3	1.6
		Day 0	95	30	25	26	0.1	605	14	0.8	18	5.9	3.2	106	314	9.5	2.9	147	4.1	113	1.2	2.7	92	47	4	1.6
		4hr post-	98	27	25	26	0.1	570	14	0.9	16	5.7	3.1	114	302	9.6	3.7	149	4.4	115	1.2	2.6	85	57	4	1.6
		day 1	90	30	23	26	0.1	464	10	0.8	13	5.8	3.1	101	311	9.5	3.4	150	4.2	116	1.1	2.7	95	43	3	1.5

Supplemental Datasheet for Biochemistry parameters for U10 and U11