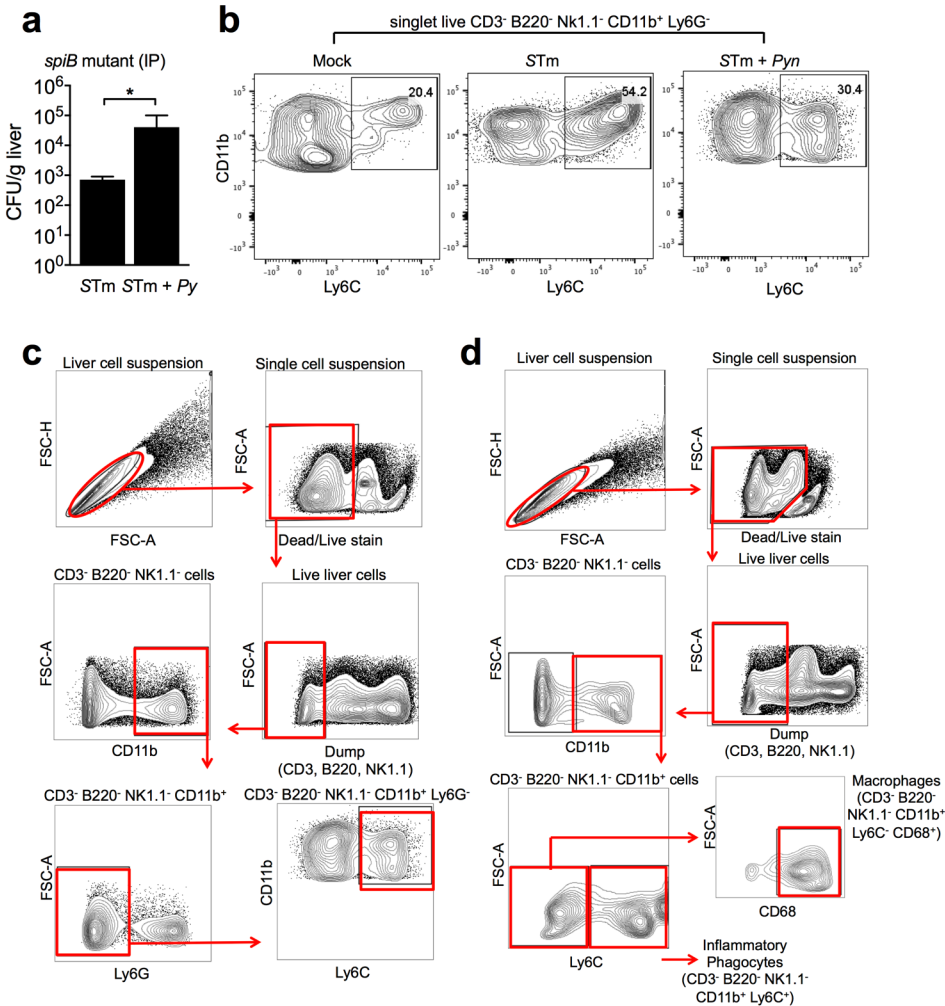


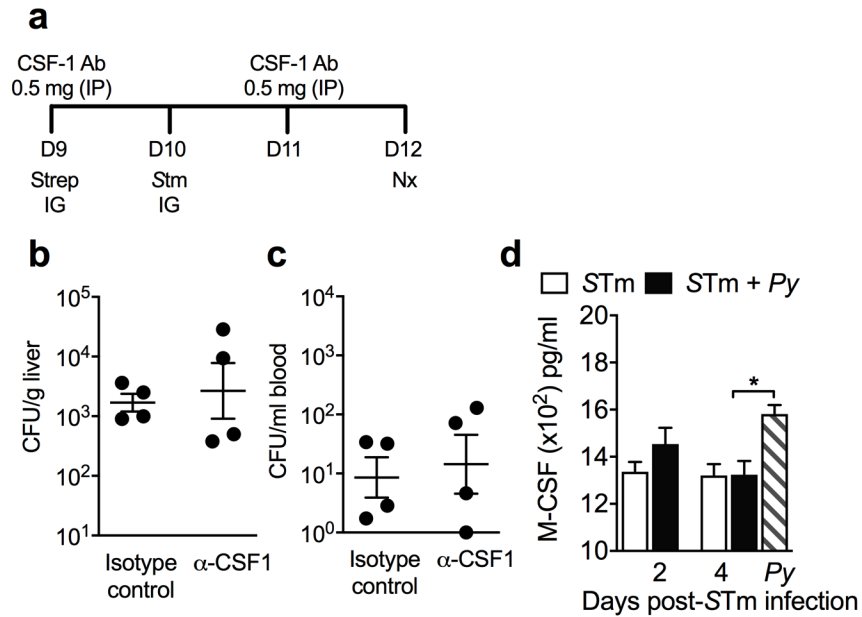
## Supplementary Materials

### Fig S1-S3; Table S1



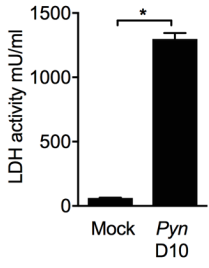
**Figure S1:**

**a**, CFU of the liver at 2 days after IP infection of *P. yoelii*-infected or uninfected CBA mice with a SPI-2 T3SS *S. Typhimurium* mutant (n=10). Data are shown as mean  $\pm$  SEM. **b**, Representative flow cytometry plots for inflammatory monocyte frequency in singlet live CD3<sup>-</sup> B220<sup>-</sup> NK1.1<sup>-</sup> CD11b<sup>+</sup> Ly6G<sup>-</sup> Ly6C<sup>+</sup> liver cells from uninfected, *S. Typhimurium*-infected and co-infected mice and **(c)** gating strategy. **d**, Gating strategy for identification of liver inflammatory phagocytes (singlet live CD3<sup>-</sup> B220<sup>-</sup> NK1.1<sup>-</sup> CD11b<sup>+</sup> Ly6C<sup>+</sup>) and macrophages phagocytes (singlet live CD3<sup>-</sup> B220<sup>-</sup> NK1.1<sup>-</sup> CD11b<sup>+</sup> Ly6C<sup>-</sup> CD68<sup>+</sup>). Statistical significance was determined using an unpaired Student's *t* test on log-transformed values and is indicated as \*, *P* < 0.05.



**Figure S2**

**a**, Treatment protocol for blockade of M-CSF. Uninfected and *P. yoelii* infected mice were treated with 0.5 mg of anti-CSF1 antibody or isotype control 1-day prior and after IG *S. Typhimurium* infection. Colonization of *S. Typhimurium* in the liver (**b**) and blood (**c**) was assessed 2 days after *S. Typhimurium* infection. **d**, M-CSF (pg/ml) in *S. Typhimurium* infected, *P. yoelii* infected and co-infected mice 2 and 4 days post-*S. Typhimurium* infection ( $n=3-7$ ). Data represent  $\pm$  SEM. Statistical significance was determined using an unpaired Student's *t* test on log-transformed values and is indicated as \*,  $P < 0.05$ .



**Figure S3**

Levels of serum lactate dehydrogenase, LDH, (mU/ml) from uninfected *P. yoelii* infected at D10 post-parasite infection (n=3-4). Data represent the mean  $\pm$  SEM.

**Table S1: Quantitative real-time PCR (qRT-PCR) primers used in this study.**

<b>Target gene</b>	<b>Method</b>	<b>Sequences (5'-3')</b>
18S RNA	Absolute Copies	GGCCGTTCTTAGTTGGTGGAGCG CTGAACGCCACTTGTCCCTC
<i>Ii10</i>	Absolute Copies	GGTTGCCAAGCCTTATCGGA ACCTGCTCCACTGCCTTGCT
<i>Tnfa</i>	Absolute Copies	GCAGGTTCTGTCCCTTTCACACTG TGGAAGCCCCCATCTTTTGG
<i>Nos2</i>	Absolute Copies	TTGGGTCTTGTTCACTCCACGG CCTCTTTCAGGTCACCTTGGTAGG
<i>Csf2 (Gm-csf)</i>	Absolute Copies	GGCCTTGGAAGCATGTAGAG GGGGGCAGTATGTCTGGTAG
<i>Hmox-1</i>	Absolute Copies	TCTCAGGGGGTCAGGTC GGAGCGGTGTCTGGGATG
<i>Fth1</i>	Absolute Copies	GATCAACCTGGAGTTGTATGCC CTCCCAGTCATCACGGTCTG