

Supplementary information

α -Gal on the protein surface affects uptake and degradation in immature monocyte derived dendritic cells

M. Krstić Ristivojević^{1,2,†}, J. Grundström^{1,†}, TAT. Tran¹, D. Apostolović¹, V. Radoi³, M. Starkhammar⁴, V. Vukojević³, T. Ćirković Veličković^{2,5}, C. Hamsten¹, M. van Hage^{1,*}

¹Department of Medicine Solna, Immunology and Allergy Unit, Karolinska Institutet, and University Hospital, Stockholm, Sweden,

²Center of Excellence in Molecular Food Sciences, Faculty of Chemistry, University of Belgrade, Belgrade, Serbia,

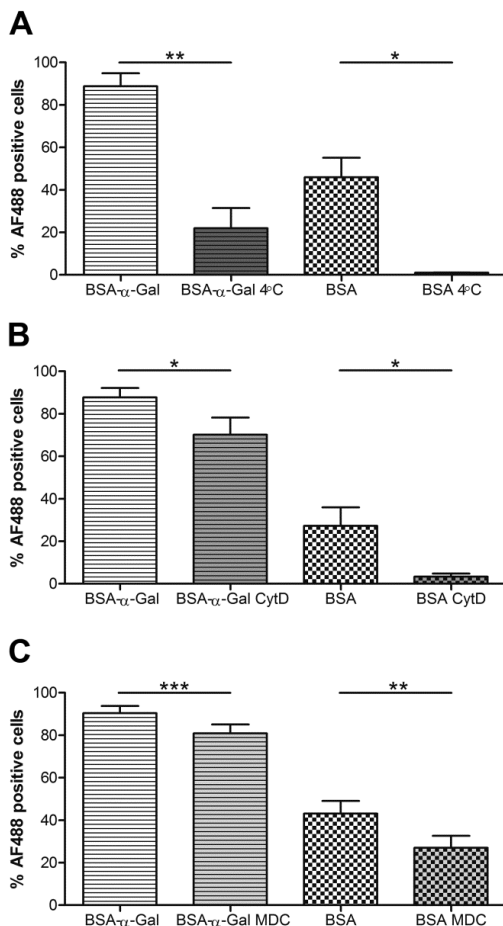
³Department of Clinical Neuroscience, Center for Molecular Medicine (CMM), Karolinska Institutet, Stockholm, Sweden.

⁴ Department of Internal Medicine, Södersjukhuset, Stockholm, Sweden

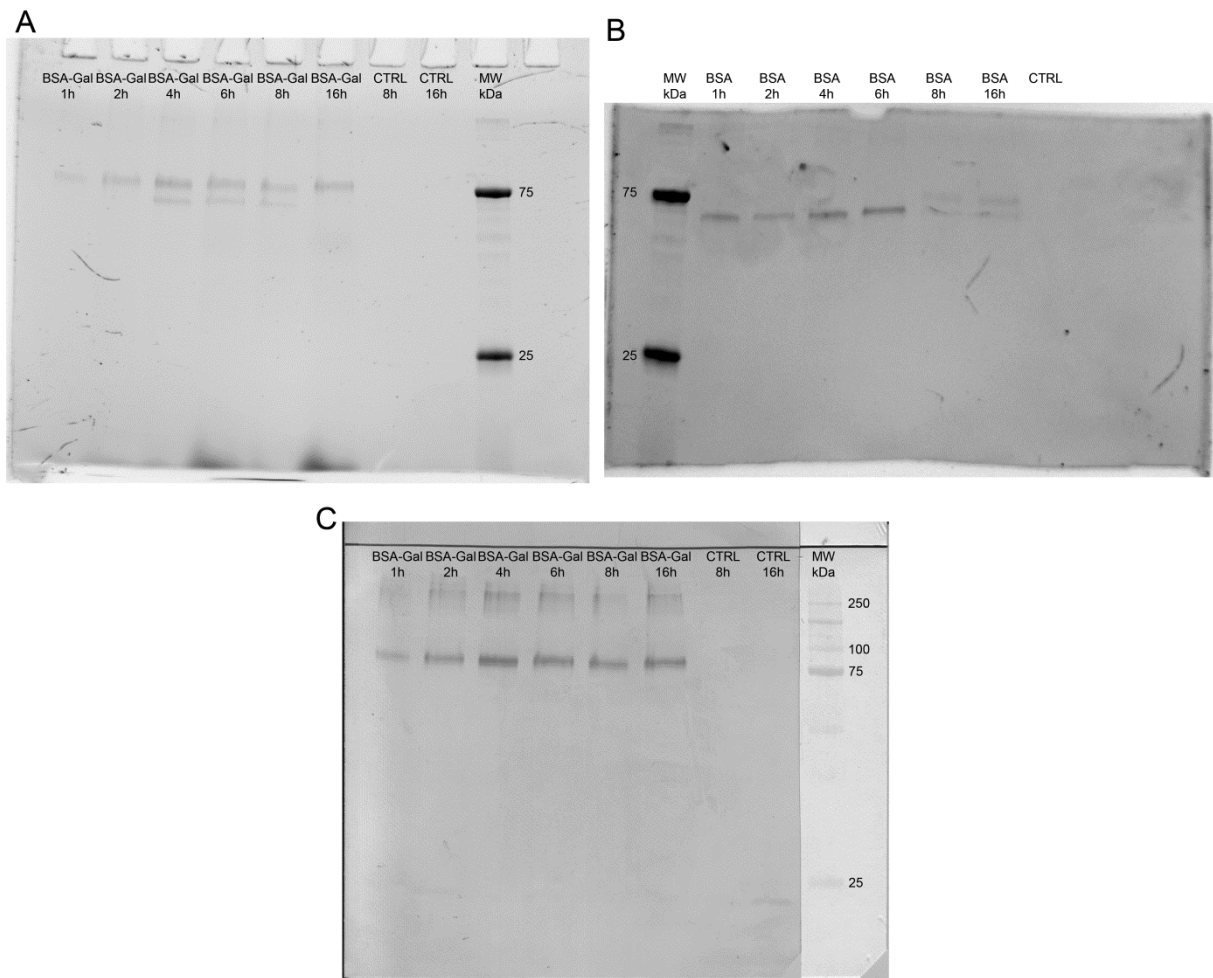
⁵Ghent University Global Campus, Yeonsu-gu, Incheon, South Korea,

† Shared first authorship

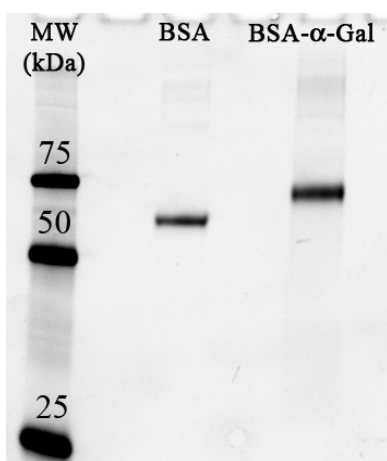
* Corresponding author



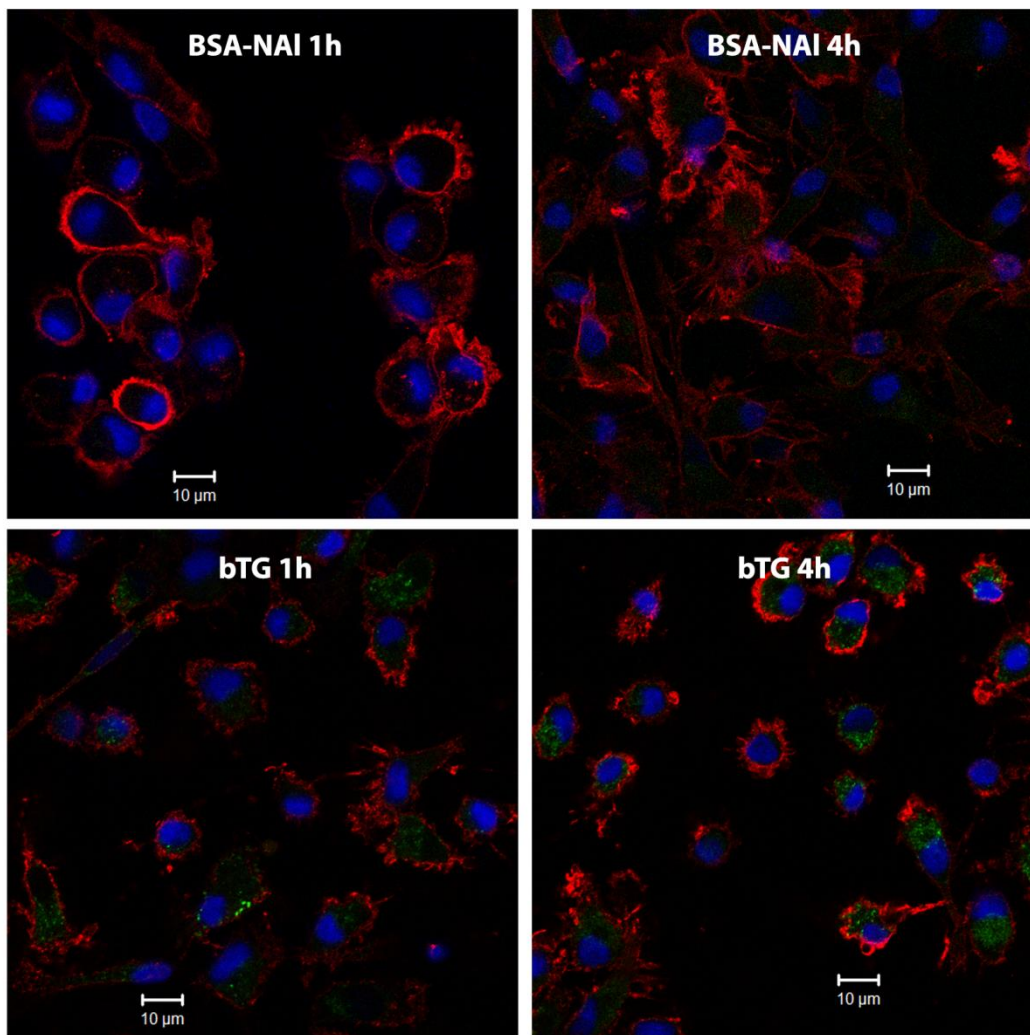
Supplementary figure S1. Inhibition of internalization of BSA- α -Gal and BSA in healthy iMDDCs after 4 h of incubation A) at 4°C, n = 4, B) with Cytochalasin D, n = 5 (BSA) and n = 6 (BSA- α -Gal), and C) with Monodansylcadaverine, n = 7. * = p < 0.05, ** = p < 0.01 and *** = p < 0.001 analyzed by paired t-test.



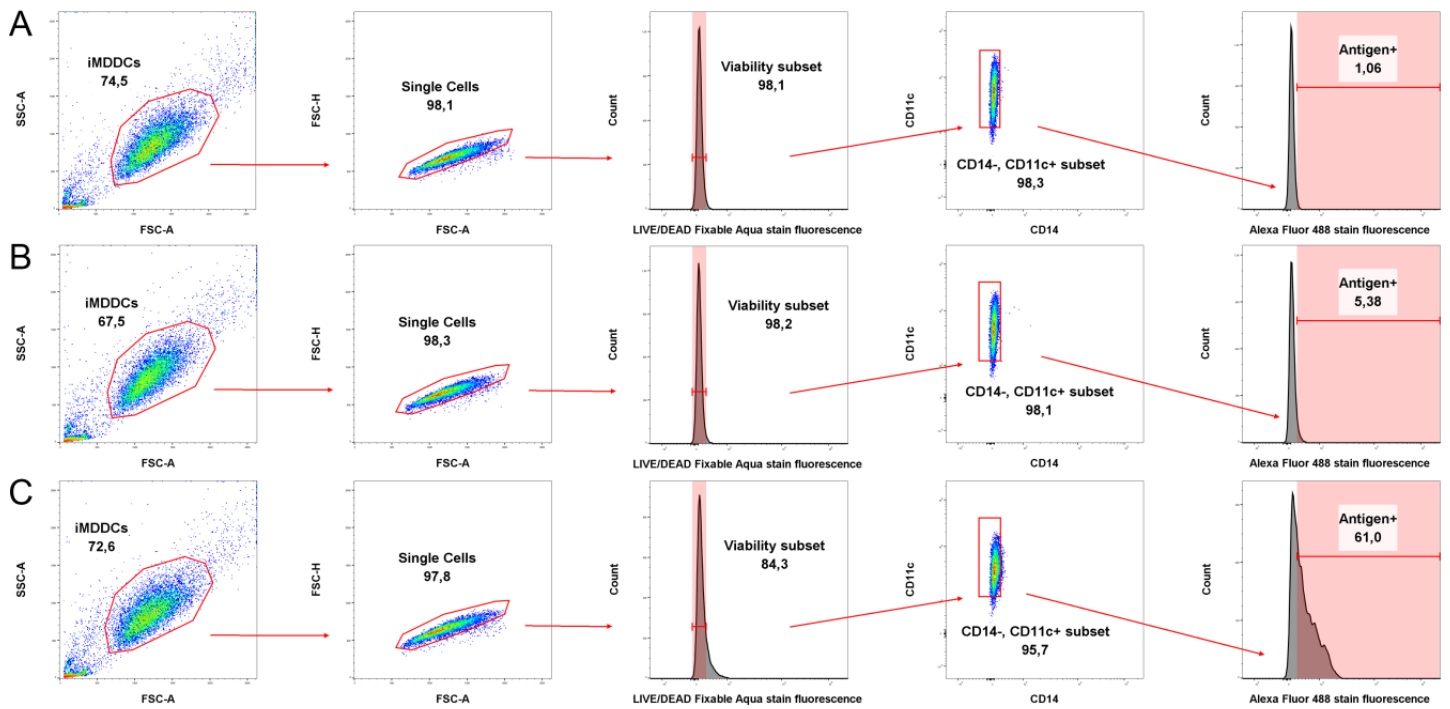
Supplementary Fig. S2. A) Fluorescent detection of BSA- α -Gal and BSA in iMDDCs lysates resolved on an SDS-polyacrylamide gel. B) Western blot detection of the α -Gal epitope in lysates from iMDDCs. iMDDCs were generated from healthy blood donors.



Supplementary figure S3. BSA and BSA- α -Gal resolved on a 12% polyacrylamide gel after SDS-PAGE.



Supplementary figure S4. Uptake of BSA-Nal (top) and bTG (bottom) after 1 h (left) and 4 h (right) of iMDDC incubation at 37°C analyzed by confocal laser scanning microscopy. Green = BSA-NAl or bTG, red = HLA-DR and blue = DAPI stained nuclei.



Supplementary figure S5. Gating strategy for assessment of protein uptake by iMDDCs. A) Negative control, B) BSA and C) BSA- α -Gal. Data analysis was performed using FlowJo version 10 software.