

**Mitochondrial DNA copy number is associated with psychosis severity and anti-psychotic treatment.**

Parvin Kumar<sup>1,2,\*</sup>, Paschalis Esthathopoulos<sup>1,2</sup>, Vincent Millischer<sup>1,2</sup>, Eric Olsson<sup>3,4</sup>, Ya Bin Wei<sup>1,2,5</sup>, Oliver Brüstle<sup>6</sup>, Martin Schalling<sup>1,2</sup>, J. Carlos Villaescusa<sup>1,2</sup>, Urban Ösby<sup>2,3,4</sup>, Catharina Lavebratt<sup>1,2,\*</sup>

<sup>1</sup>Department of Molecular Medicine and Surgery, Karolinska Institutet, Stockholm, Sweden

<sup>2</sup>Center for Molecular Medicine, Karolinska University Hospital, Stockholm, Sweden

<sup>3</sup>Department of Adult Psychiatry, PRIMA Child and Adult Psychiatry AB, Stockholm, Sweden

<sup>4</sup>Department of Neurobiology, Care Sciences and Society, Karolinska Institutet, Stockholm, Sweden.

<sup>5</sup>Department of Psychiatry, University of California San Diego, California, USA

<sup>6</sup>Institute of Reconstructive Neurobiology, University of Bonn Medical Faculty, Bonn, Germany

**Word count of the abstract:** 180    **manuscript body:** 3746    **references:** 2934

**The number of figures, tables and supplemental information:**

3 Tables

1 figure

4 Supplementary figures and 1 Supplementary table

**\* Correspondence:**

Catharina Lavebratt, Karolinska University Hospital L8:00, SE-171 76 Stockholm, Sweden.

E-mail: Catharina.lavebratt@ki.se; Tel: +46-8-51775541; Fax: +46-8-51773909

Parvin Kumar, Karolinska University Hospital L8:00, SE-171 76 Stockholm, Sweden. E-mail:

parvin.kumar@ki.se; Tel: +46-8-51776524; Fax: +46-8-51773909

Supplementary Figures

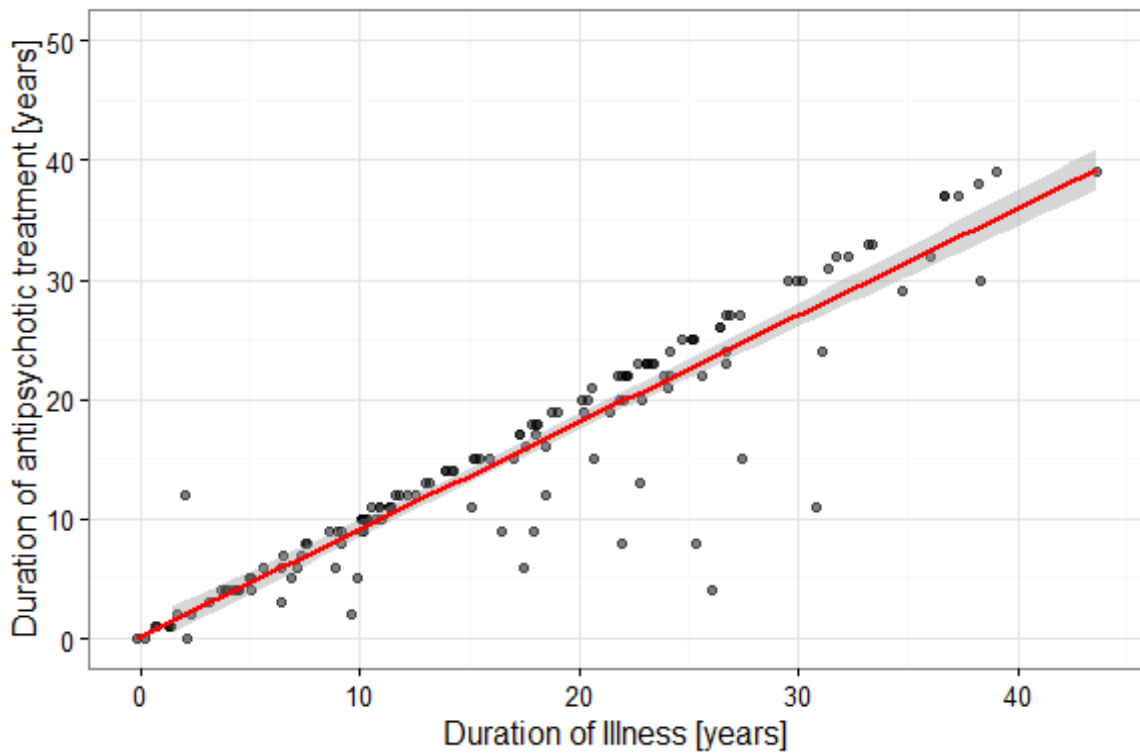


Figure S1A: Duration of antipsychotic treatment positively correlated with duration of illness within the cohort of patients on clozapine and risperidone (Spearman's  $\rho = 0.915$ ,  $p < 0.001$ ,  $n = 145$ ).

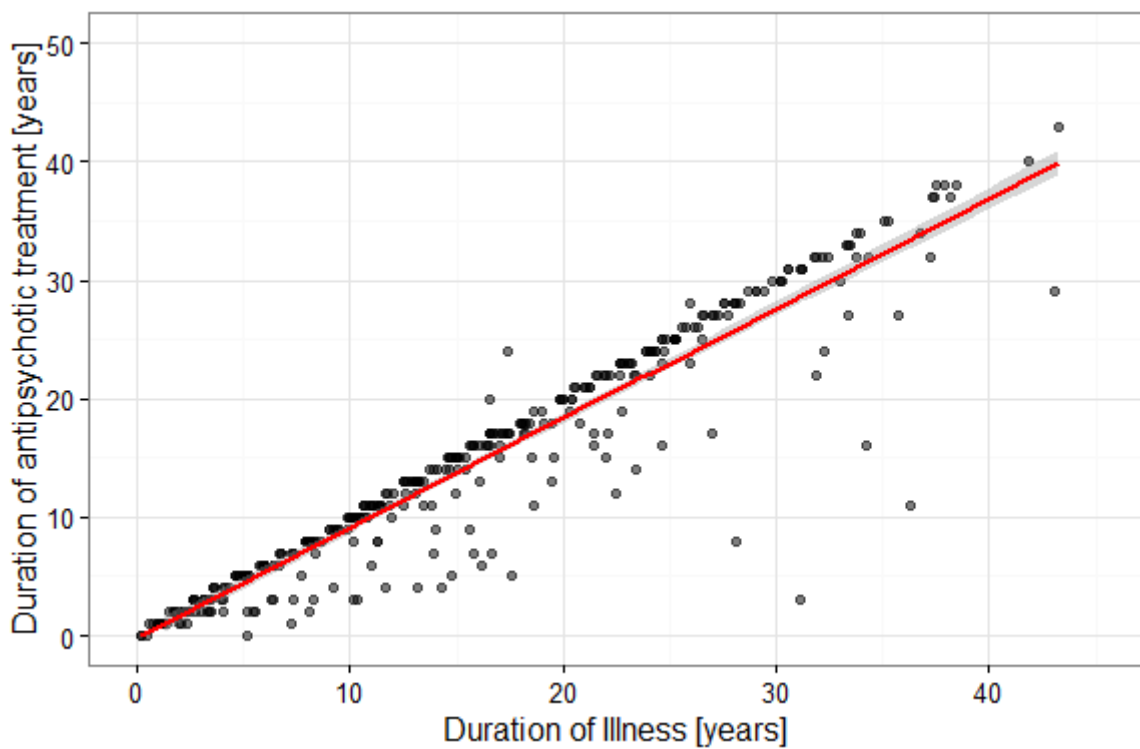


Figure S1B: Duration of antipsychotic treatment positively correlated with duration of illness within the cohort of patients not on clozapine and risperidone (Spearman's  $\rho = 0.944$ ,  $p < 0.001$ ,  $n = 359$ ).

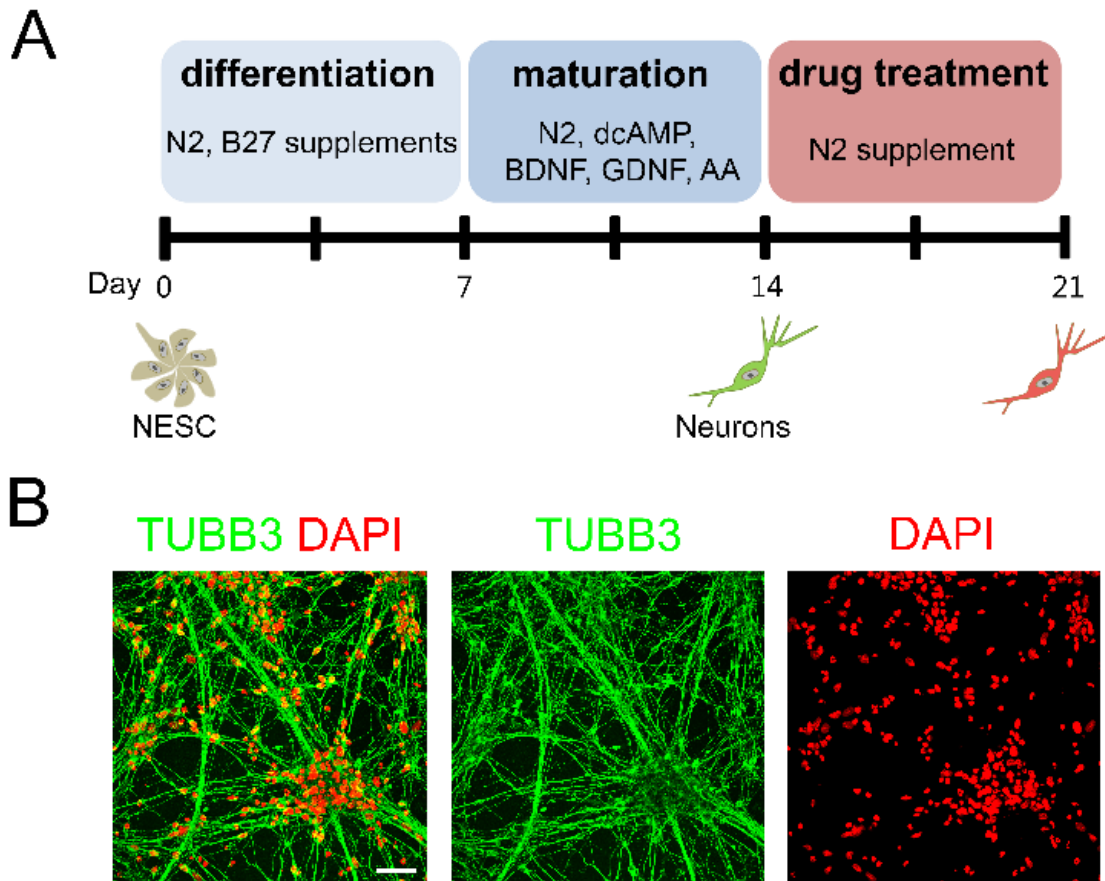


Figure S2A and S2B

*In vitro* effects of anti-psychotics on mitochondrial DNA copy number in neurons derived from human neuroepithelial stem cells (NESCs).

(A) NESCs were differentiated for 7 days with N2 and B27. They were matured with N2, dcAMP, brain-derived neurotrophic factor (BDNF), glial cell-derived neurotrophic factor (GDNF) and ascorbic acid (AA). (B) Mature neurons' morphology was characterized through stains for neuronal marker TUBB3, white scale bar: 50  $\mu$ m.

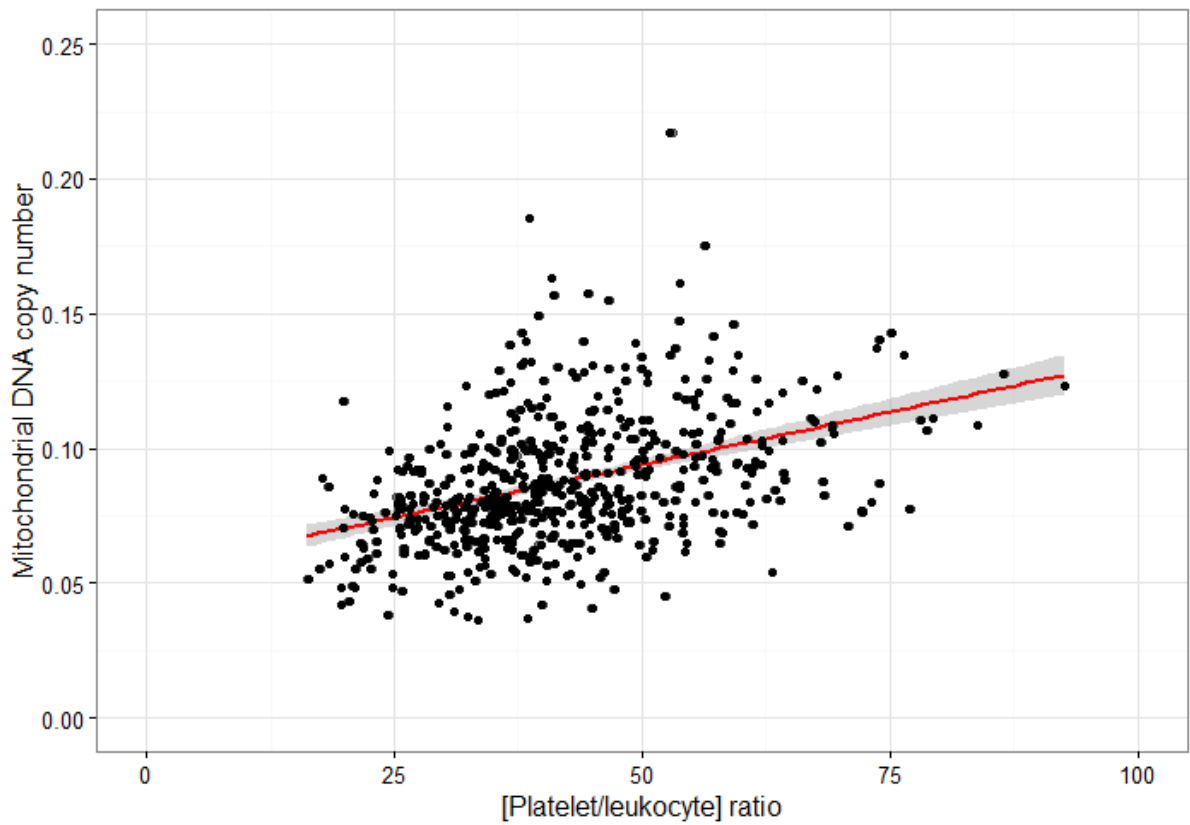


Figure S3: Whole blood mtDNA copy number was associated with the platelet to leukocyte count ratio ( $\rho = 0.422$ ,  $p=2.2e-16$ ). Therefore, mtDNA copy number was regressed on [platelet/leukocyte] ratio to obtain normally distributed unstandardized residuals. The residual variable designated  $mtDNA_{n_{res}}$  represents the variance of whole blood mtDNA copy number that is unbiased by platelet to leukocyte count.

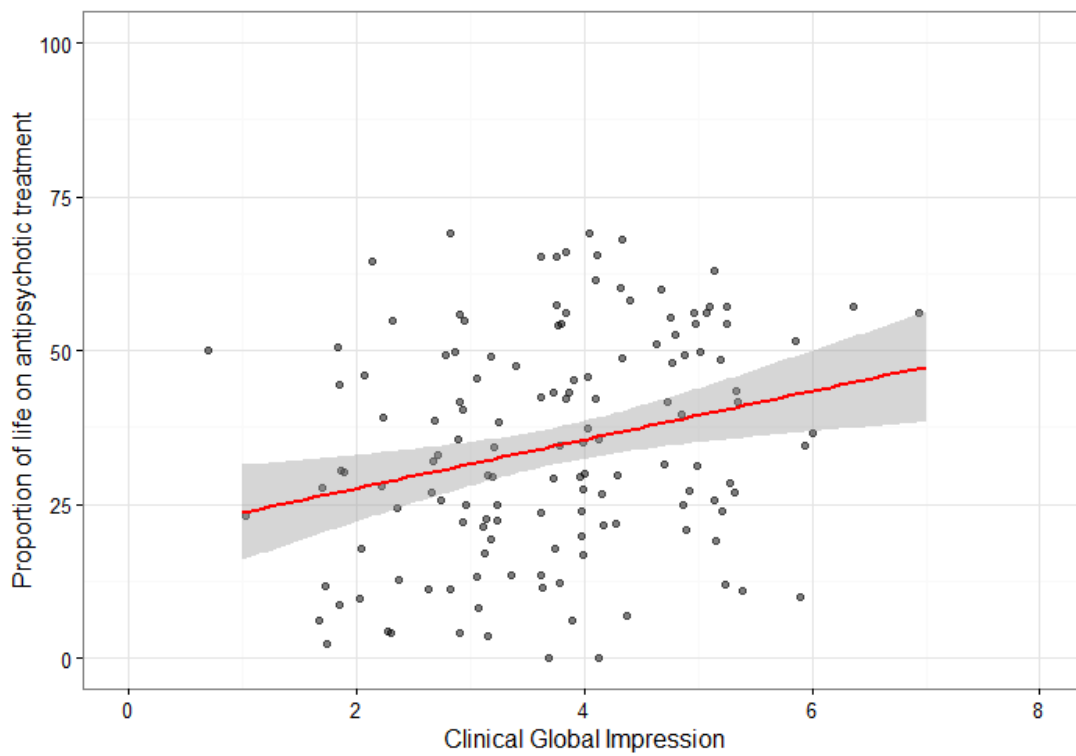


Figure S4A: Proportion of life on antipsychotic treatment positively correlated with Clinical Global Impression CGI (score) within the group of patients on treatment with clozapine and risperidone (Spearman's  $\rho = 0.258$   $p = 0.002$ ,  $n = 140$  and  $\beta = 0.248$ ).

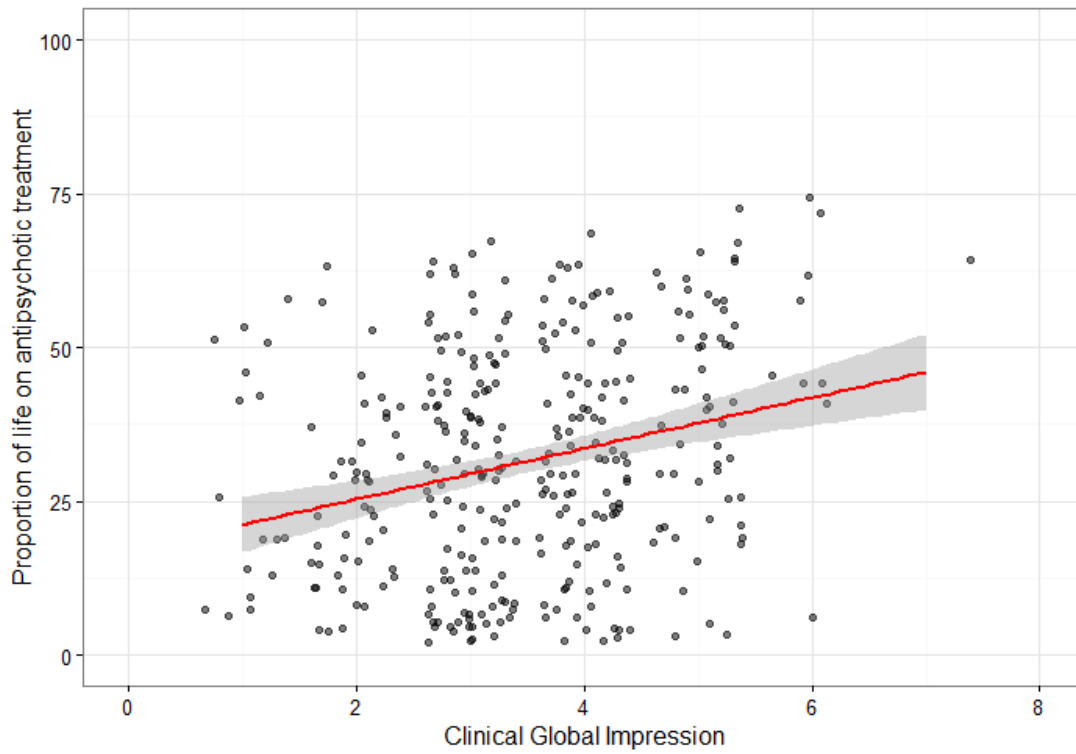


Figure S4B: Proportion of life on antipsychotic treatment positively correlated with Clinical Global Impression CGI (score) within the group of patients not on clozapine and risperidone treatment (Spearman's  $\rho = 0.234$ ,  $p < 0.001$ ,  $n = 349$  and  $\beta = 0.251$ )

**Table S1:** Final models of clinical parameters associated with whole blood mitochondrial DNA copy number adjusted for platelet to leukocyte count. Analyses restricted to patients with Schizophrenia diagnosis, N=306.

Variable	B	SE	$\beta_{\text{standardized}}$	t	p
<b>Model 1 : Clinical profile (adjusted R<sup>2</sup> = 0.031, ANOVA: F= 5.65 , n =288)</b>					
(Constant)	0.117	0.010		12.2	<0.001
Age	<0.001	<0.001	-0.120	-2.071	0.039
CGI	-0.004	0.001	-0.145	-2.495	0.013
<b>Model 2 : Treatment (adjusted R<sup>2</sup> = 0.052, ANOVA: F = 5.65, n = 279 )</b>					
(Constant)	0.114	0.009		13.1	<0.001
Age	-0.001	<0.001	0.170	-2.87	0.004
Clozapine	-0.013	0.005	-0.172	-2.89	0.004
Risperidone	-0.010	0.004	-0.139	-2.37	0.019
<b>Model 3 Group A : Treatment vs psychosis severity (adjusted R<sup>2</sup> = 0.040 , ANOVA: F = 5.02, n = 96 )</b>					
(Constant)	0.088	0.055		19.1	<0.001
Proportion of life on treatment	-0.001	<0.001	-0.224	-2.24	0.027
<b>Model 3 Group B : Treatment vs psychosis severity (adjusted R<sup>2</sup> = 0.018 , ANOVA: F = 4.39, n = 190 )</b>					
(Constant)	0.106	0.008		13.9	<0.001
CGI	0.004	0.002	-0.151	-2.10	0.037
<b>Model 4 Group A : Metabolic profile (adjusted R<sup>2</sup> = 0.049, ANOVA: F = 5.37 , n = 85 )</b>					
Proportion of life on treatment	-0.001	<0.001	-0.245	-2.32	0.023
<b>Model 4 Group B : Metabolic profile (n = 204 )</b>					
No significant predictors					

CGI: Clinical Global Impression-Severity

Group A: patients receiving clozapine or risperidone

Group B: patients not receiving clozapine or risperidone