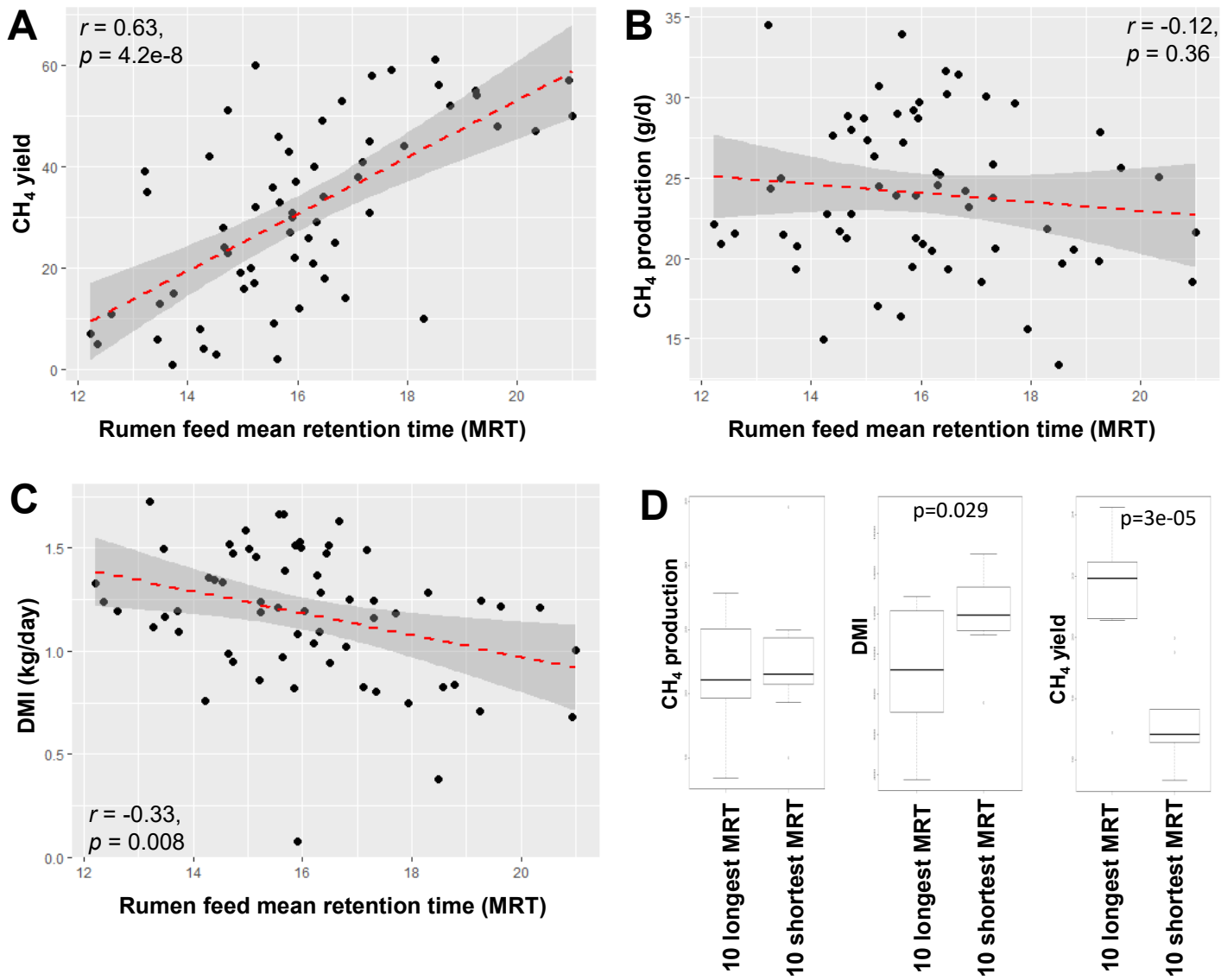


# Figure S6



**Figure S6. Relationships between CH<sub>4</sub> production, CH<sub>4</sub> yield, dry matter intake (DMI) and mean retention time (MRT) in the Australian CH<sub>4</sub> experiment.** Such relationships were shown for all Australian animals (**A-C**) and for top and bottom 10 MRT animals (**D**). MRT unit is hours (h) and the CH<sub>4</sub> yield unit is (g/day/dry matter intake). The CH<sub>4</sub> yield unit is (g/day/dry matter intake), CH<sub>4</sub>.prod (g/d), DMI (kg/d). Correlation coefficients ( $r$ ) and significance ( $p$ ) were indicated.