

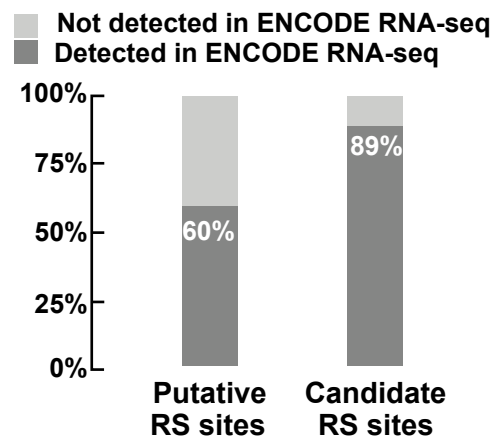
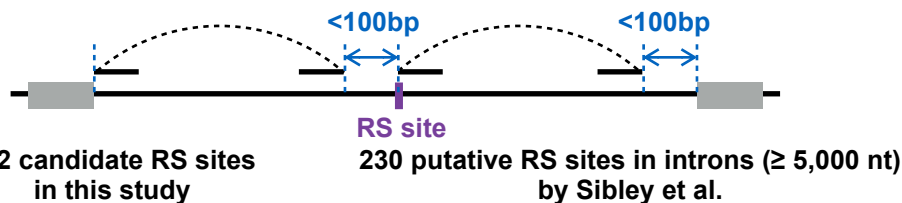
**A**

## 435 putative RS sites identified in Sibley et al.

Filters	Counts	Percentage
intron length $\geq 5,000$ nt	230	53%
high conservation (PhastCon Score $\geq 0.5$ )	113	26%
not annotated splice sites	429	99%
away from annotated splice site ( $\geq 2,000$ nt)	139	32%
located in annotated introns	292	67%
strong strength as 3' splice site (score $\geq 5$ )	395	91%
<b>Filtered RS sites</b>	<b>20</b>	<b>5%</b>

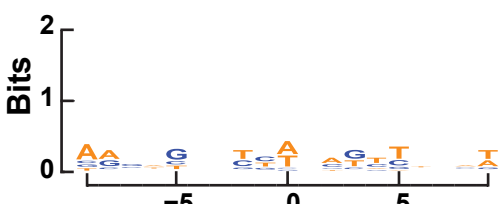
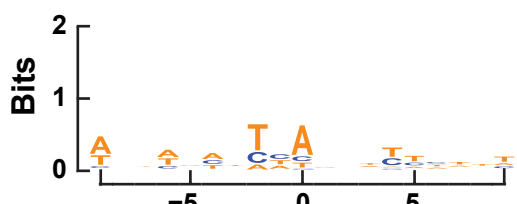
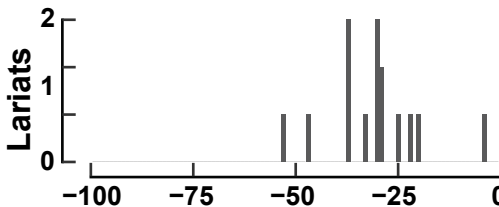
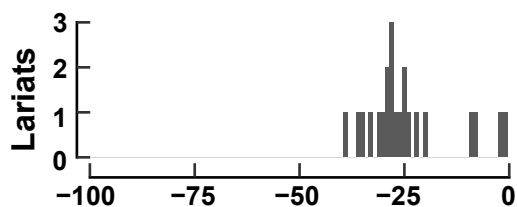
## 20 filtered RS sites by Sibley et al.

Classified in this study	Putative RS sites	Candidate RS sites	Sawtooth RS sites
Number of RS sites	20	12	9

**B****C**

lariats	lariat reads	RS sites
23	266	15

lariats	lariat reads	RS sites
15	153	12

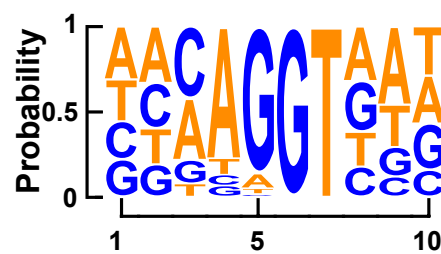


Distance to 3' splice site or BP site

Distance to 3' splice site or BP site

**D**

## Reconstituted 5' splice site of candidate RS sites



## Reconstituted 5' splice site of sawtooth RS sites

