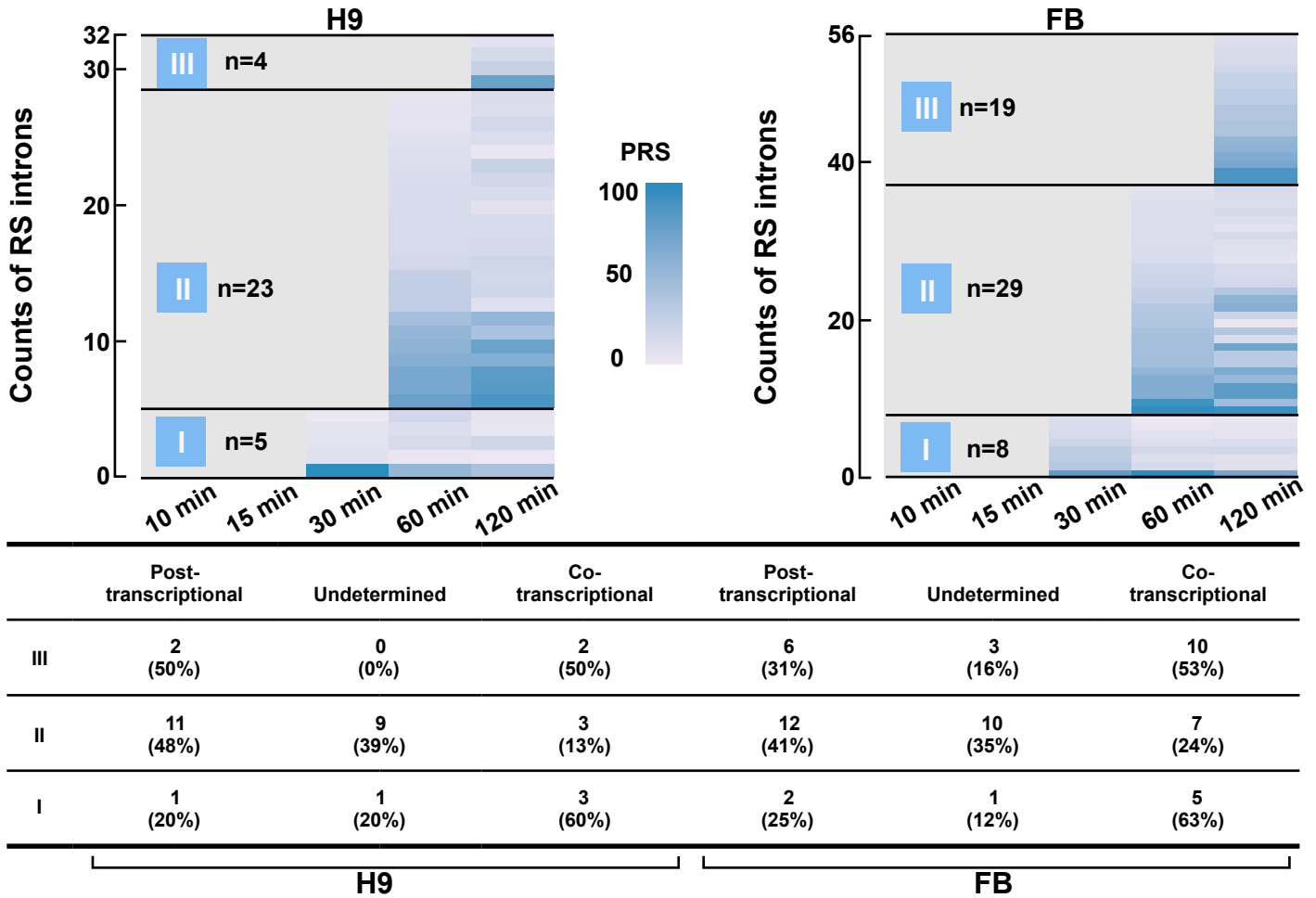


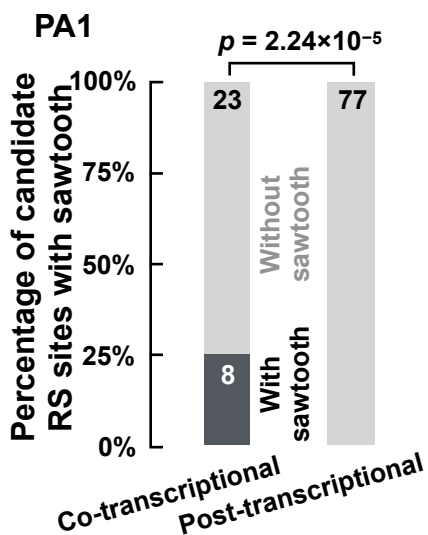
Time needed by Pol II to transcribe the entire gene

Time point of RS onset	Post-transcriptional	Undetermined	Co-transcriptional
10 min	0	0~10	>10
15 min	<10	10~15	>15
30 min	<15	15~30	>30
60 min	<30	30~60	>60
120 min	<60	60~120	>120
240 min (4 hr)	<120	120~240	>240
960 min (16 hr)	<240	240~960	>960

B



C



D

