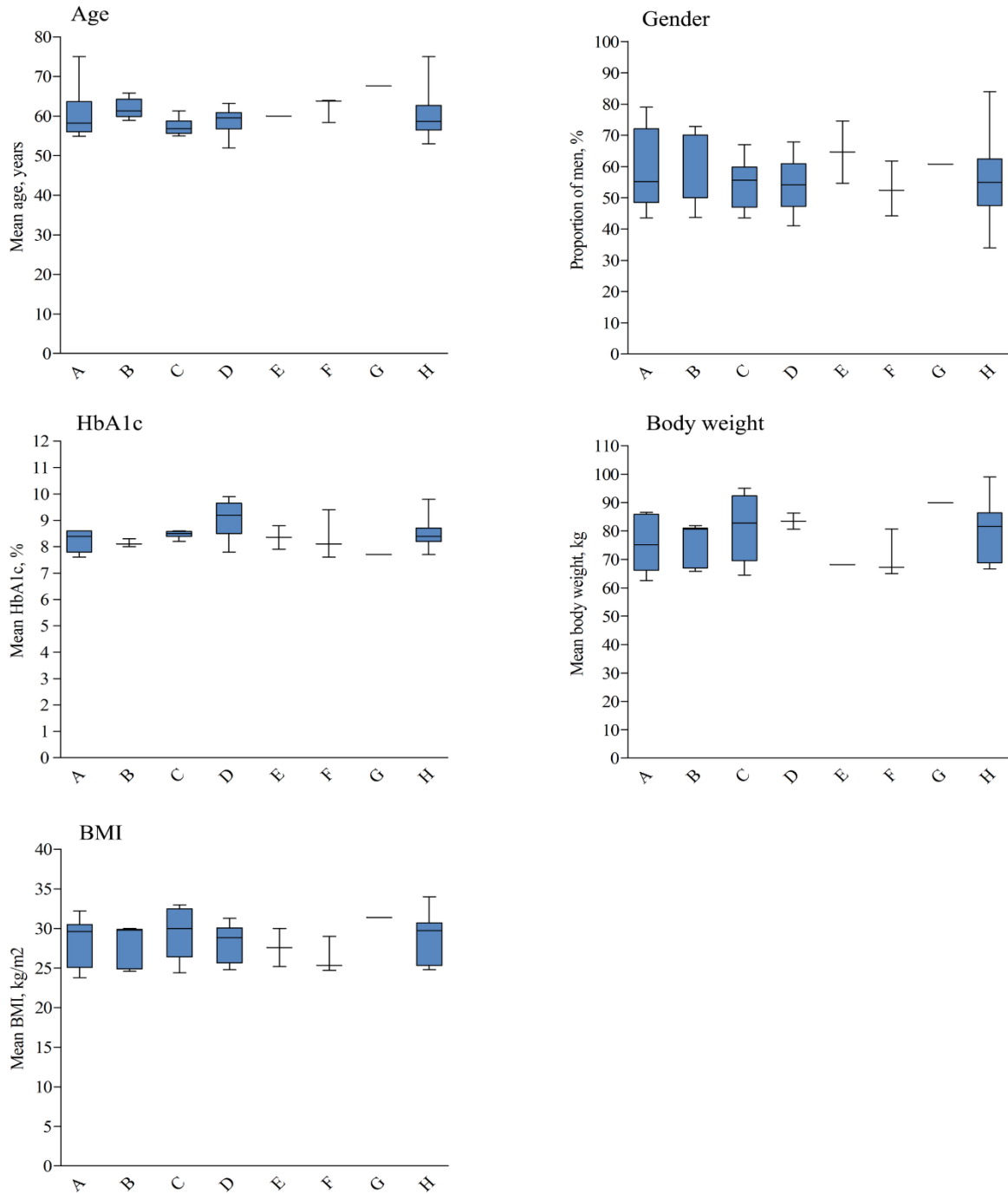


S1 Fig. The distribution of study-level characteristics according to drug class



Note: A, dipeptidyl peptidase-4 inhibitor; B, sodium-glucose co-transporter-2 inhibitor; C, glucagon-like peptide-1 receptor agonist; D, thiazolidinedione; E, metformin; F, α -glucosidase inhibitor; G, basal (long acting) insulin; H, placebo. The limits of the boxes represent the 25th and 75th centile, the middle line represents the median, and the error bars show the adjacent values.