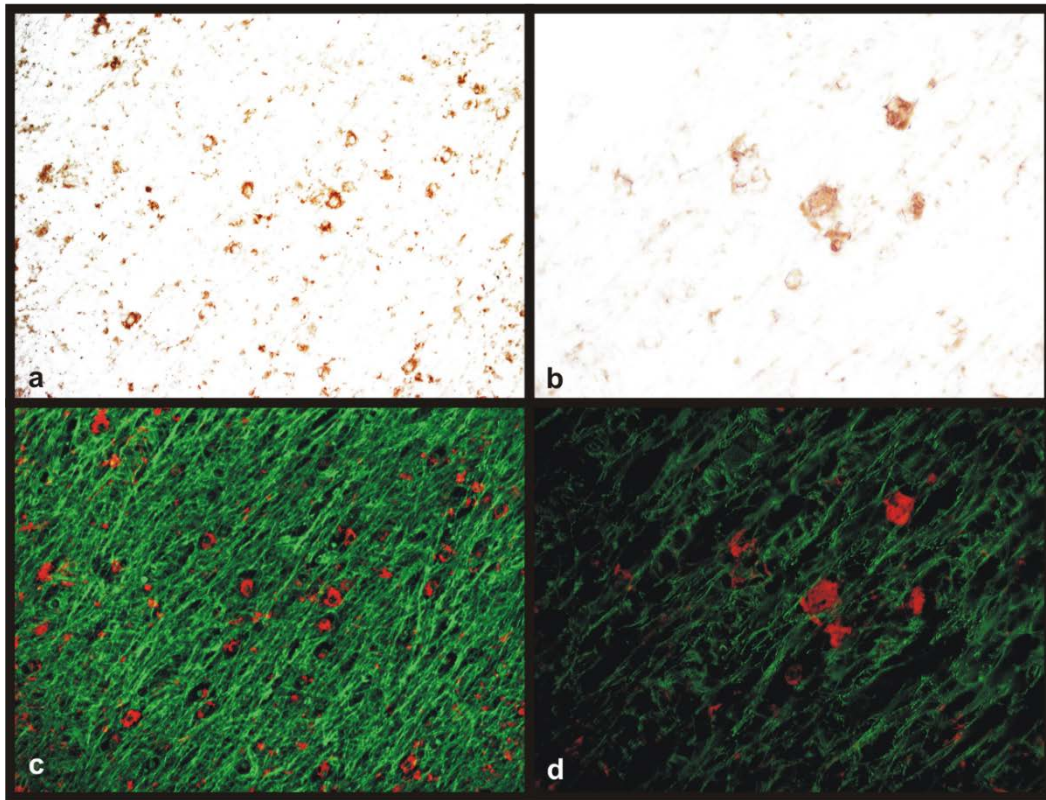


Supplementary Figure 1

Crystallin/GFAP



Supplementary Figure 1. Double immunohistochemical technique for crystallin (DAB signal, brown) and GFAP (Cy2 fluorescence signal, green). Representative images a, b show the bright-field micrographs of crystallin signal and images c, d show the digital superposition, on those section, of fluorescence signal for GFAP in green and for crystallin in red. Images a, c: 40x. Images b, d: 100x.