

Figure S1. EMSA comparing His<sub>6</sub>-XdrA and similarly purified fractions of *E. coli* cell extracts containing the expression vector (*E. coli* control) using fragment A as a labelled probe. His<sub>6</sub>-XdrA and the *E. coli* control were purified under identical conditions.

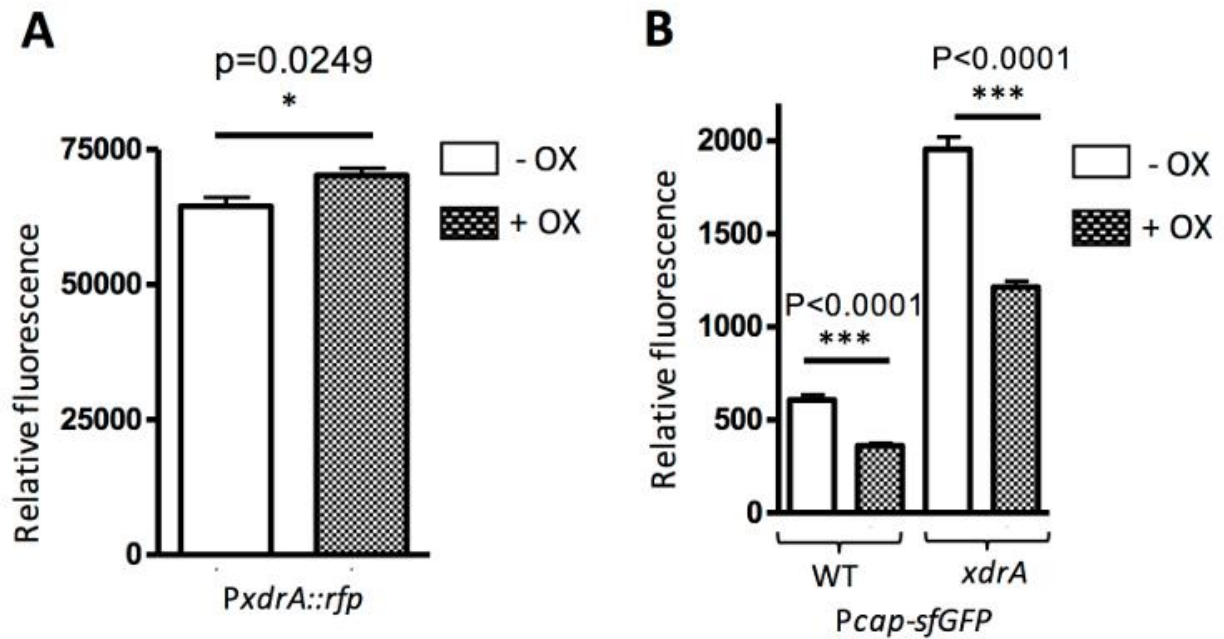


Figure S2. Effect of subinhibitory oxacillin (65 ng/ml). (A) The expression of RFP (DsRed.T3) under the control of *Pxdra* in the chromosome was measured in the presence and absence of oxacillin (OX). CYL12968 was grown in TSB-0G for 2 h in the presence or absence of OX, then 170  $\mu\text{g/ml}$  chloramphenicol, 50  $\mu\text{g/ml}$  kanamycin, and 50  $\mu\text{g/ml}$  tetracycline were added to the cultures and incubated for additional 2.5 h for DsRed.T3 protein maturation (n=5). (B) Wild type (CYL11481) and the *xdrA* mutant (CYL12837) containing the *Pcap-sfgfp* plasmid (pMLE61) were grown in TSB-0G for 4 h and assayed for GFP in the presence and absence of OX (n=5).