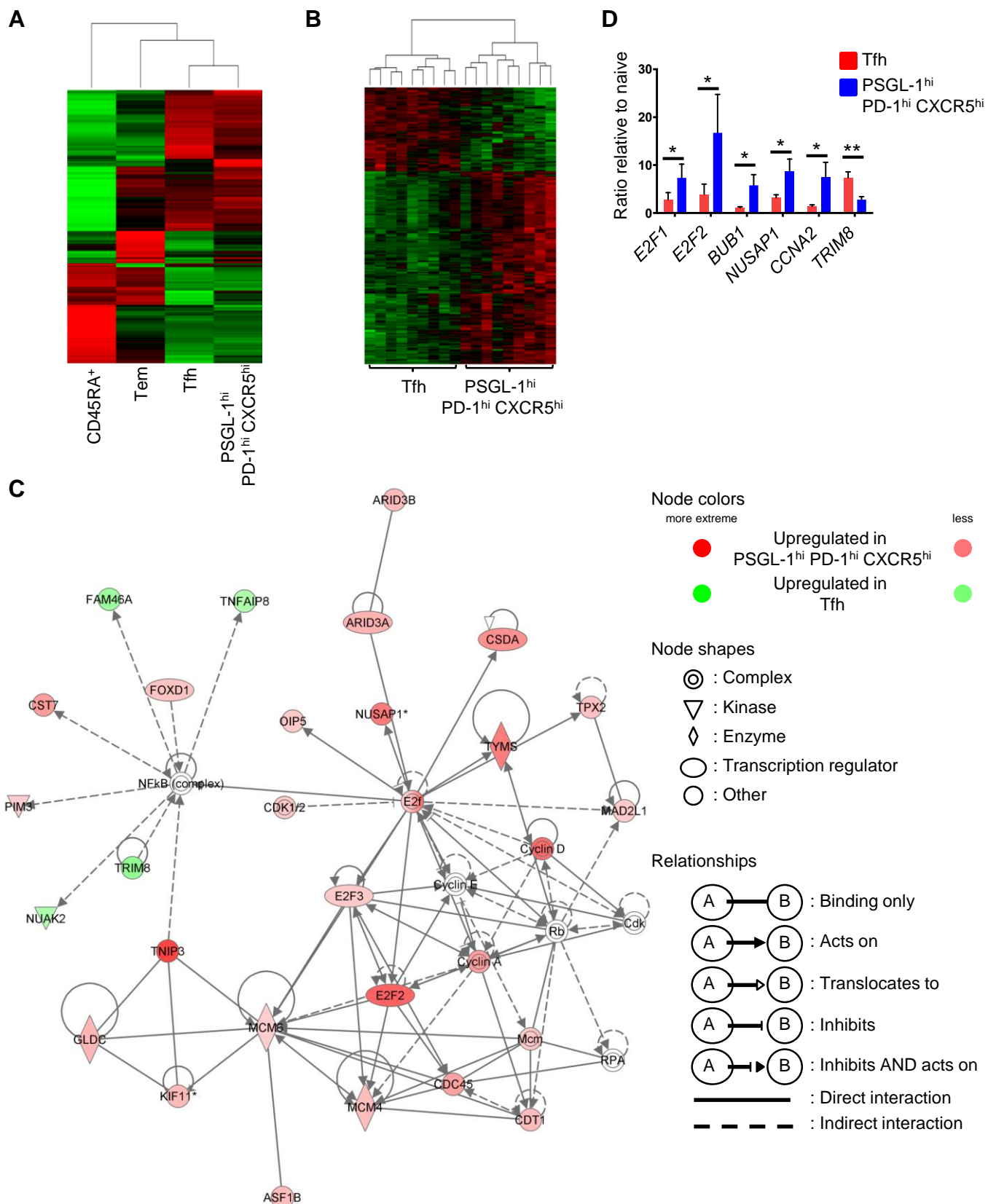
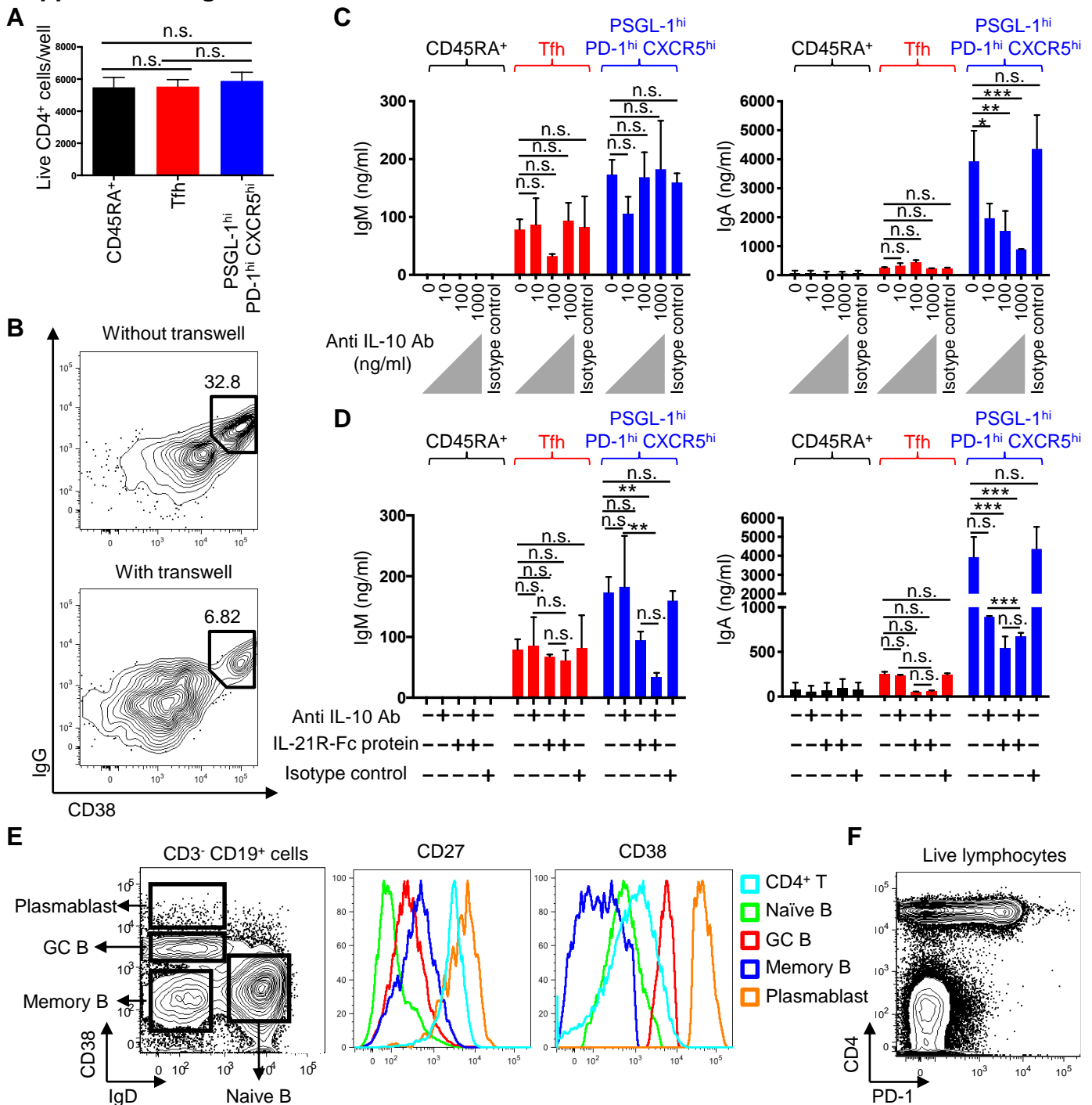


# Supplemental Figure 1



**PSGL-1<sup>hi</sup> PD-1<sup>hi</sup> CXCR5<sup>hi</sup> T cells proliferate via E2F pathway.** (A) Hierarchical clustering of CD45RA<sup>+</sup> naive, effector memory (Tem), follicular helper T (Tfh) and PSGL-1<sup>hi</sup> PD-1<sup>hi</sup> CXCR5<sup>hi</sup> T cells. Data were obtained from three independent chips from three different tonsils. (B) Differentially expressed genes between Tfh and PSGL-1<sup>hi</sup> PD-1<sup>hi</sup> CXCR5<sup>hi</sup> T cells. (C) Top functional network of differentially expressed genes between Tfh and PSGL-1<sup>hi</sup> PD-1<sup>hi</sup> CXCR5<sup>hi</sup> T cells by Ingenuity Pathway Analysis. (D) qPCR of E2F and its related proteins in Supplemental Figure 1C. N = 4, paired t test. \**P* < 0.05, \*\**P* < 0.01. Bars indicate the mean and the SD.

## Supplemental Figure 2



**PSGL-1<sup>hi</sup> PD-1<sup>hi</sup> CXCR5<sup>hi</sup> T cells help memory B cells produce immunoglobulins (Igs) in a contact- and cytokine-(IL-10/21) dependent manner.** (A) Tonsillar CD45RA<sup>+</sup> naïve, Tfh, and PSGL-1<sup>hi</sup> PD-1<sup>hi</sup> CXCR5<sup>hi</sup> T cells were cocultured with autologous memory B cells without exogenous stimulation. 5 days later, cells were collected and live CD4<sup>+</sup> T cells were quantified. N = 3. One-way ANOVA test. Bars indicate the mean and the SD. (B) PSGL-1<sup>hi</sup> PD-1<sup>hi</sup> CXCR5<sup>hi</sup> T cells were cocultured with autologous memory B cells with/without transwell. IgG intracellular staining was performed 5 days after the coculture. Representative data from two independent experiments. (C) Indicated dose of anti-IL-10 antibody was added to T cell plus memory B cell cocultures in the presence of anti-CD3 and anti-CD28 for 5 days. Representative data from three independent experiments. One-way ANOVA test. \**P* < 0.05, \*\**P* < 0.01, \*\*\**P* < 0.001. Bars indicate the mean and the SD. (D) Anti-IL-10 (1 µg/ml) antibody and/or IL-21R-Fc (1 µg/ml) protein were added to T cell plus memory B cell cocultures in the presence of anti-CD3 and anti-CD28 for 5 days. IgM and IgA in supernatants were measured by ELISA. Representative data from two independent experiments. One-way ANOVA test. \*\**P* < 0.01, \*\*\**P* < 0.001. Bars indicate the mean and the SD. (E) Tonsillar B (CD3<sup>-</sup> CD19<sup>+</sup>) cell subsets and CD27 and CD38 expression. Representative plots from three independent experiments. (F) PD-1 surface staining of total live lymphocytes. Representative plots from eight independent experiments.