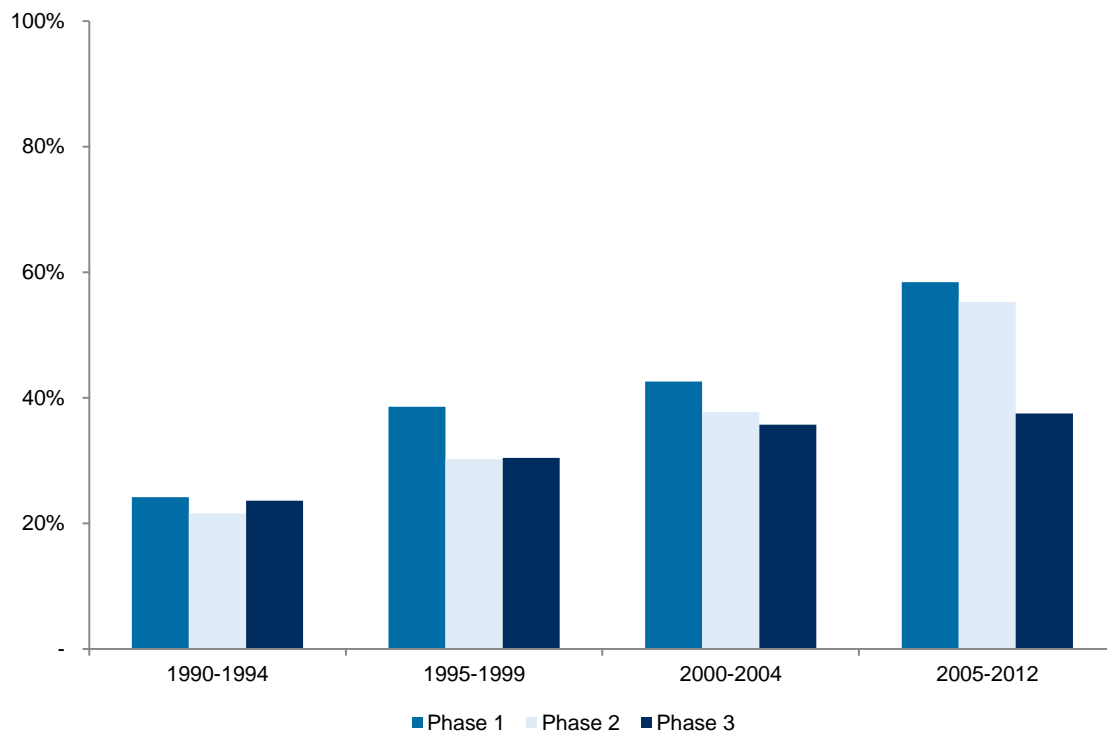
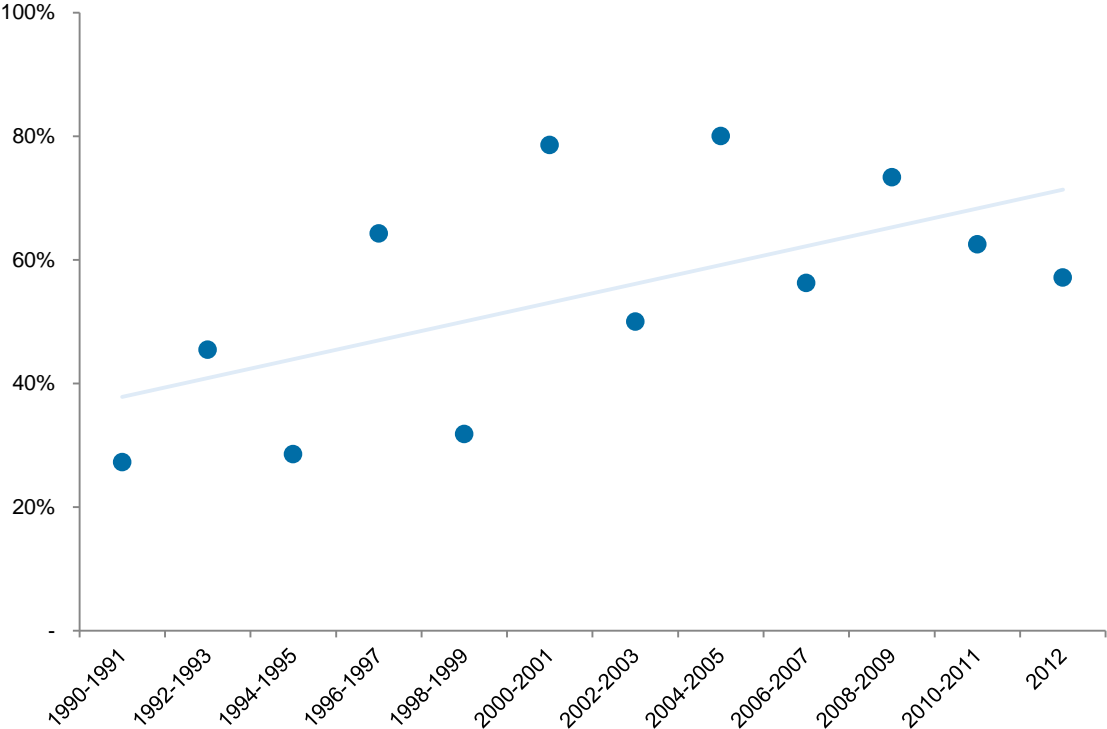


Supplemental Figure 1. Temporal Trends in Proportion of Clinical Trials for New Cardiovascular Drugs Started by Small and Medium-Sized Companies



Notes: Small and medium-sized companies are firms with annual gross revenues of less than \$1 billion at the start of the clinical trial.

Supplemental Figure 2. Temporal Trends in Proportion of Phase 3 Cardiovascular Clinical Trials Accounted for Drugs Targeting a Novel Biological Pathway



Notes: Year represents year of trial start. Definitions of a novel biological pathway are provided in the Methods section. Linear trend line is shown in light blue.