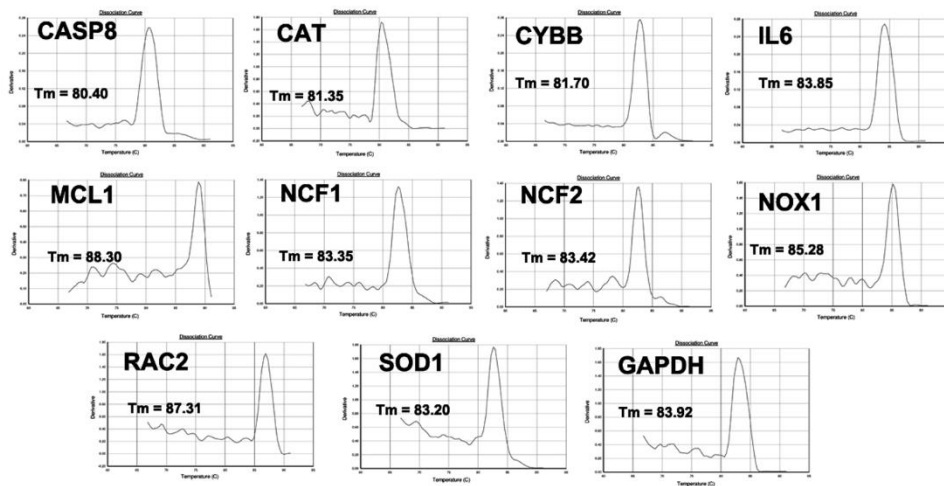
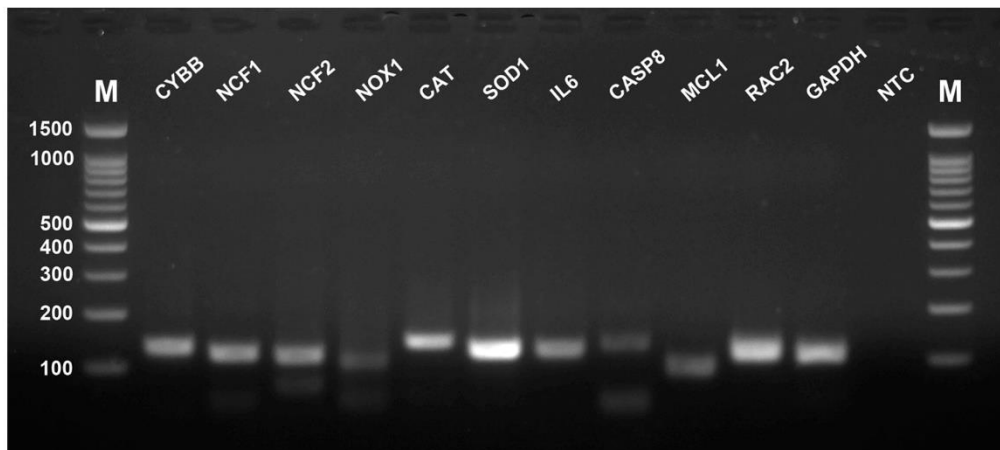


Supplementary information

Suppl. Table S1. Real-time quantitative RT–PCR primers

Gene	Accession No.	Primer	Sequence	Annealing temp (°C)	Product size (bp)
<i>CYBB</i>	NM_001100286	Forward	TTGTCAAATGCCCAGCAGTG	60	134
		Reverse	TCCACAGGCATTGAACAAGC		
<i>NCF1</i>	NM_001030709	Forward	ACCATCCGCAATGCAAAGAG	60	121
		Reverse	TCTGCAAATTGCCCTCATG		
<i>NCF2</i>	XM_004943279.1	Forward	GTGGTAGCACAGTACAGTTACG	60	117
		Reverse	ATTGCATTGCCCTTCCAACC		
<i>NOX1</i>	NM_001101830	Forward	TTGCCAACAATGCAGCACTC	60	104
		Reverse	TGAGAATTCTGTGTCCCACCTG		
<i>CAT</i>	NM_001031215	Forward	GGCAACCCAATAGGAGATAAGC	60	141
		Reverse	TCCTTTCGCATGCACAACCTC		
<i>SOD1</i>	NM_205064	Forward	CATTTCTCTTACCGGACCACAC	60	123
		Reverse	AAACGAGGTCCAGCATTTC		
<i>RAC2</i>	NM_001201452	Forward	CTGTGAAGTACCTCGAATGCTC	60	114
		Reverse	ATGCTCGTTTCTTCGTTCCGG		
<i>IL6</i>	NM_204628	Forward	TGTTTCGCCTTTCAGACCTACC	60	123
		Reverse	TTATCACCATCTGCCGGATCG		
<i>CASP8</i>	NM_204592	Forward	ACACATGTGGATGCAGATGC	60	133
		Reverse	TGTTGTTGTGGTCCATGCAC		
<i>MCL1</i>	NM_001257283	Forward	GGCGTTAAAAAGCTGTTTCCG	60	88
		Reverse	TTCCAGCGCTTCTCCATG		
<i>GAPDH</i>	NM_204305	Forward	AAGGGCATCCTAGGACACAG	60	107
		Reverse	TGGTCATTCAAGTGCAATGCC		

A**B****Suppl. Fig. S1**

(A) Representative peaks in the melting profile (dissociation curves) of genes by real-time PCR reactions in chicken heterophils. (B) Representative PCR products of expressing genes obtained from chicken heterophils using agarose gel electrophoresis and EtBr staining after real-time PCR. All PCR products had the correct size (see also Suppl. Table S1). *GAPDH* was used as a reference gene. NTC = no template control, M = 100 bp DNA marker.