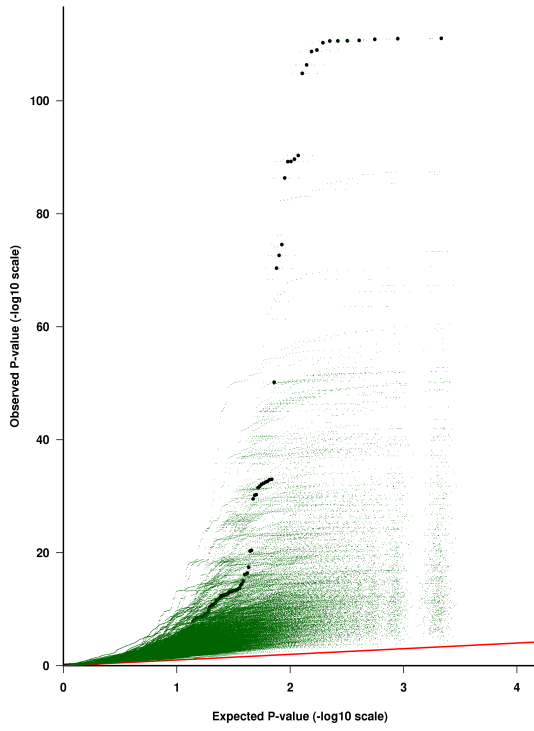
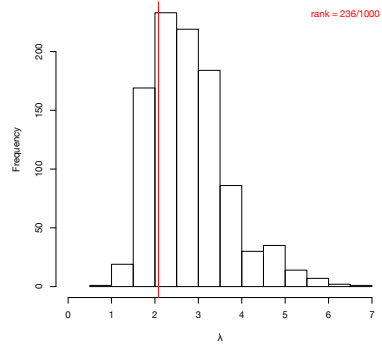


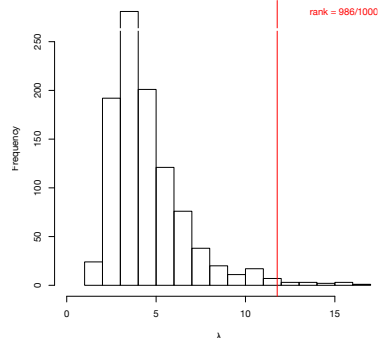
A: QQ-plot, probe resampling



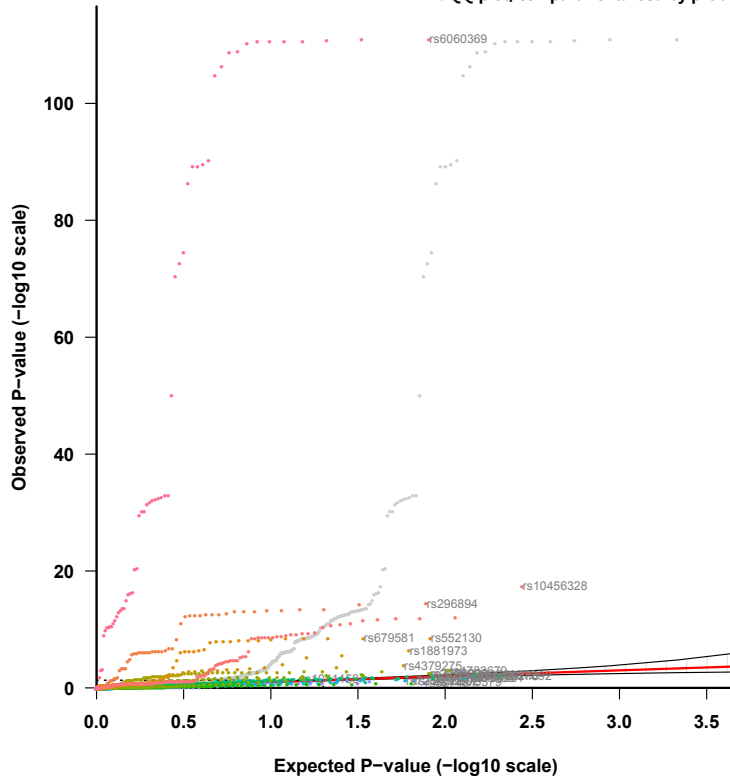
B: Median lambda histogram, probe resampling



C: Mean lambda histogram, probe resampling



D: QQ-plot, compartmentalised by probe



trans-eQTL ID and assoc p-value

- All probes
- rs1325596 1 / UQCC 20, p=2.172e-08
- rs926438 1 / BTN2A2 6, p=1.861e-17
- rs6435143 2 / HNRNPK 9, p=9.137e-07
- rs1004202 5 / BANF1 11, p=4.541e-07
- rs1325596 1 / POLR2H 3, p=4.72e-07
- rs8067165 17 / MAK 6, p=6.814e-08
- rs9392918 6 / CMTM3 16, p=7.672e-07
- rs6435143 2 / SGSM2 17, p=7.554e-07
- rs11047239 12 / C5ORF25 5, p=6.577e-07
- rs833706 12 / CEP78 9, p=6.427e-07
- rs2123731 19 / ZBTB16 11, p=1.304e-07
- rs1325596 1 / MRPS26 20, p=3.325e-07
- rs929637 7 / CHRNA10 11, p=4.253e-07
- rs1325596 1 / NOL7 6, p=1.316e-07
- rs17777628 4 / TBCCD1 3, p=8.447e-08
- rs2123731 19 / GZMB 14, p=2.45e-07
- rs199515 17 / DHPS 19, p=2.524e-07
- rs9766 17 / YIF1B 19, p=2.929e-07
- rs11047239 12 / FAM18B 17, p=5.006e-07
- rs6921207 6 / SIGMAR1 9, p=5.66e-07
- rs2013265 8 / SNORD30 11, p=4.053e-07