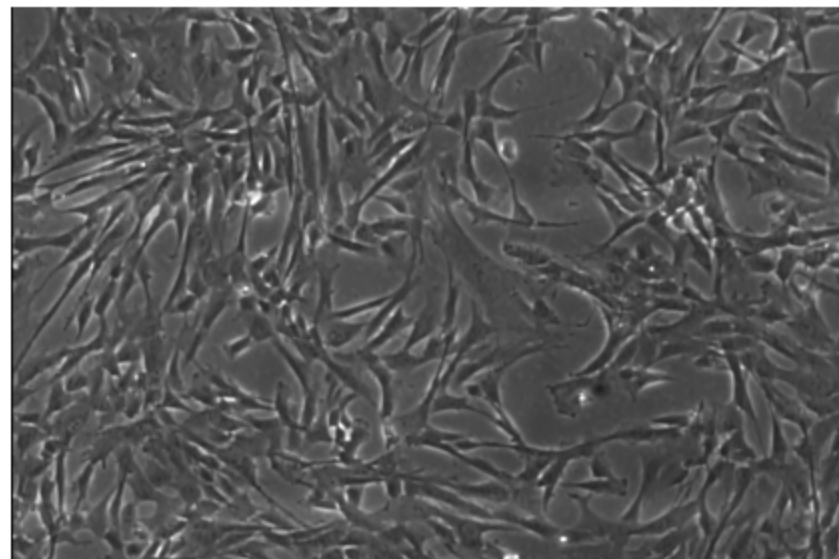
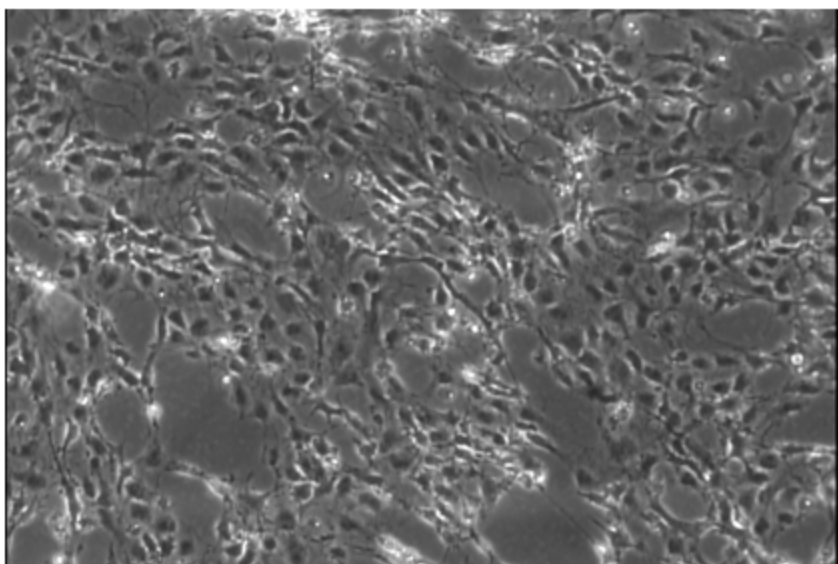


Preterm WJ-MSCs - 16 hours after 90% oxygen exposure

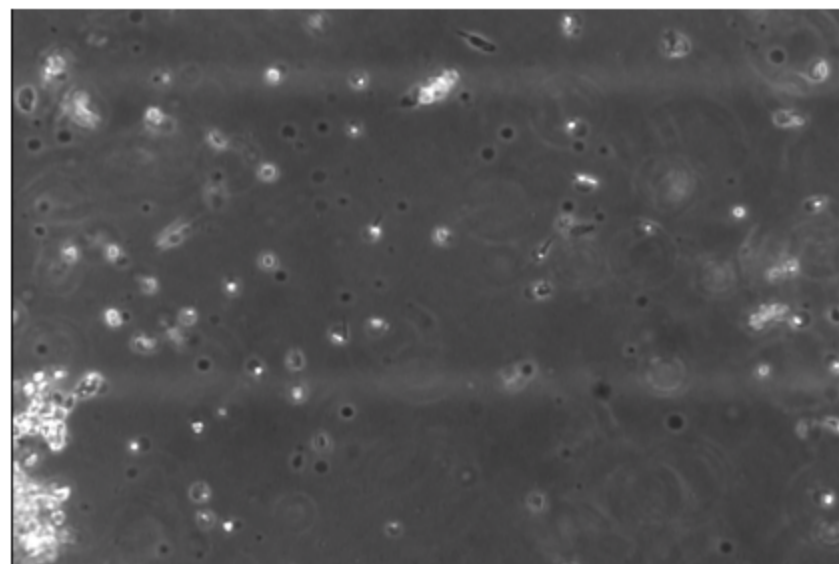


Preterm WJ-MSCs - 24hours after 90% oxygen exposure

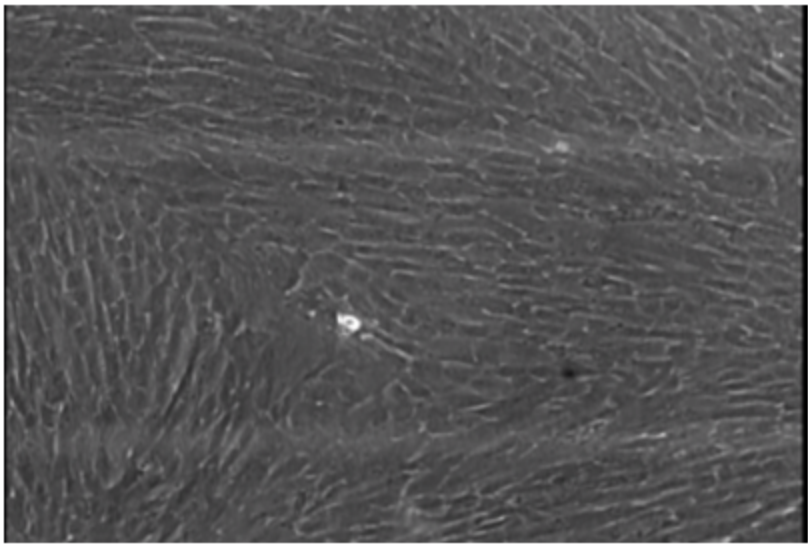


Preterm WJ-MSCs - 44 hours after 90% oxygen exposure

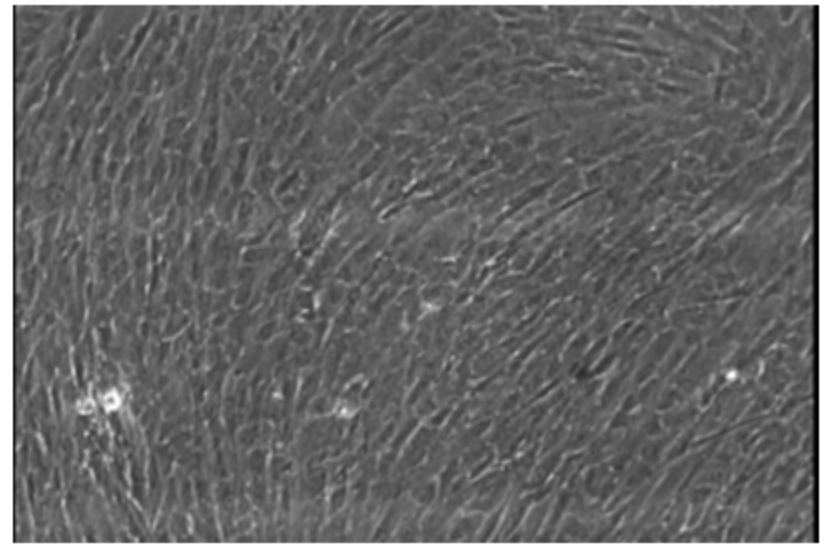
Suppl. Fig. 1a



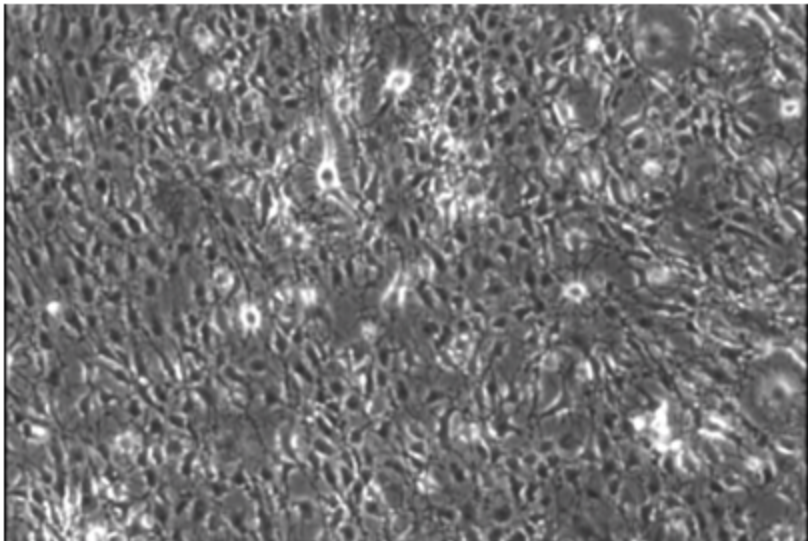
Preterm WJ-MSCs - 48 hours after 90% oxygen exposure



Term WJ-MSCs - 16 hours after 90% oxygen exposure

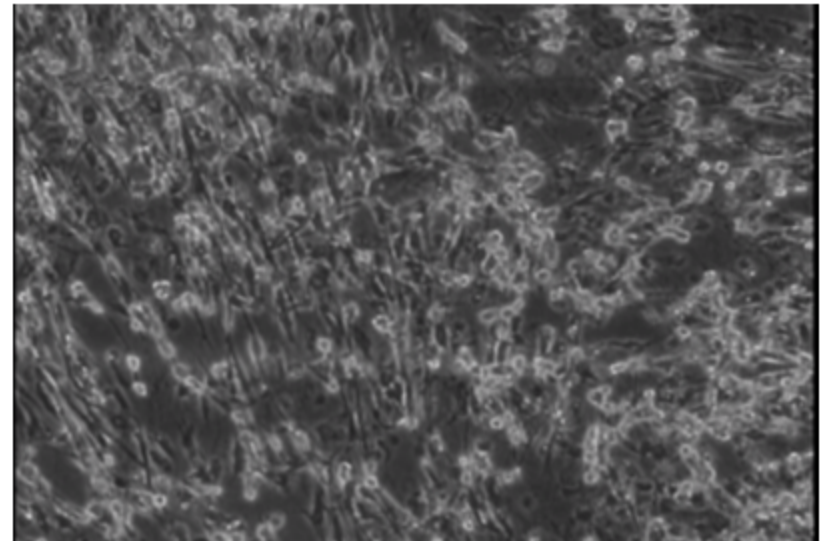


Term WJ-MSCs - 24 hours after 90% oxygen exposure



Term WJ-MSCs - 44 hours after 90% oxygen exposure

Suppl. Fig. 1b



Term WJ-MSCs - 48 hours after 90% oxygen exposure