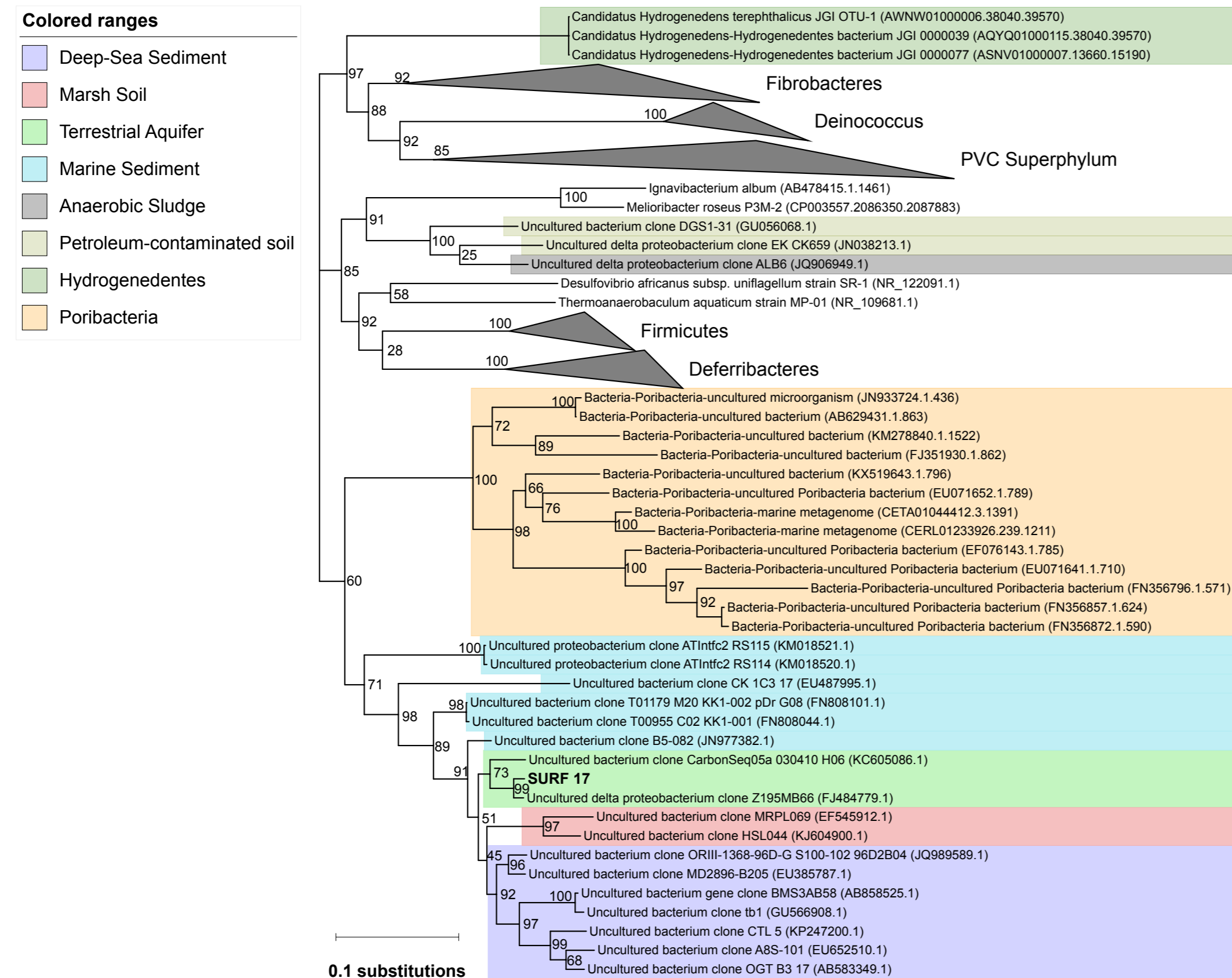


Supplementary Figure 1



Supplementary Figure 1. 16S rRNA ribosomal protein tree comparing SURF_17 sequence to 16S clone sequences available on the NCBI nr and ref_seq databases. SURF_17 is grouping with uncultured clones from terrestrial aquifers and marine deep sea sediments, separately from the previously named Ca. Hydrogenedentes that were collected from anaerobic bioreactors.