

Supporting information

Layered scaffolds incorporated with compositional gradient nanofibrous membranes for mimicking the calcified layer in osteochondral matrix

Jiaoyan Liu¹, Qing fang¹, Xiaofeng Yu¹, Ying Wan^{1,*}, Bo Xiao^{2,*}

¹ College of Life Science and Technology, Huazhong University of Science and Technology, Wuhan 430074, P. R. China

² Institute for Clean Energy and Advanced Materials, Faculty for Materials and Energy, Southwest University, Chongqing 400715, P. R. China

*Corresponding authors: Dr. Ying Wan, E-mail: ying_wan@hust.edu.cn (Y. Wan); Tel: 86-27-87792147; Fax: 86-27-87792234; Dr. Bo Xiao, Tel: 86-23-68254762

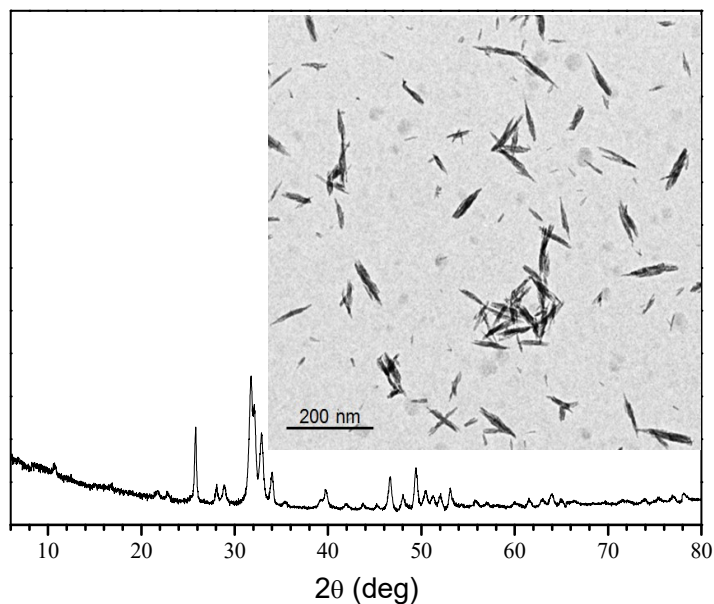


Figure S1. Typical XRD pattern and a representative TEM image for hydroxyapatite nanoparticles.

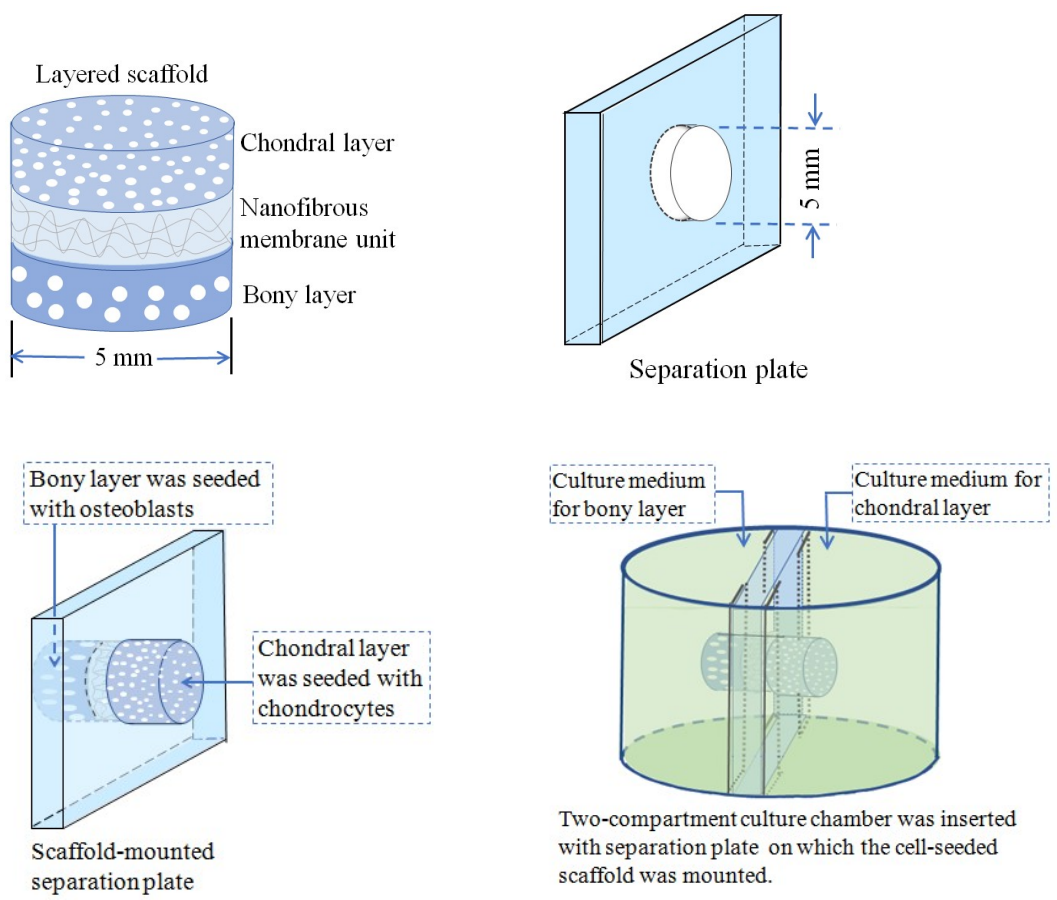


Figure S2. Schematic illustration for seeding cells and the followed culture of cell-seeded scaffolds in the two-compartment chamber.

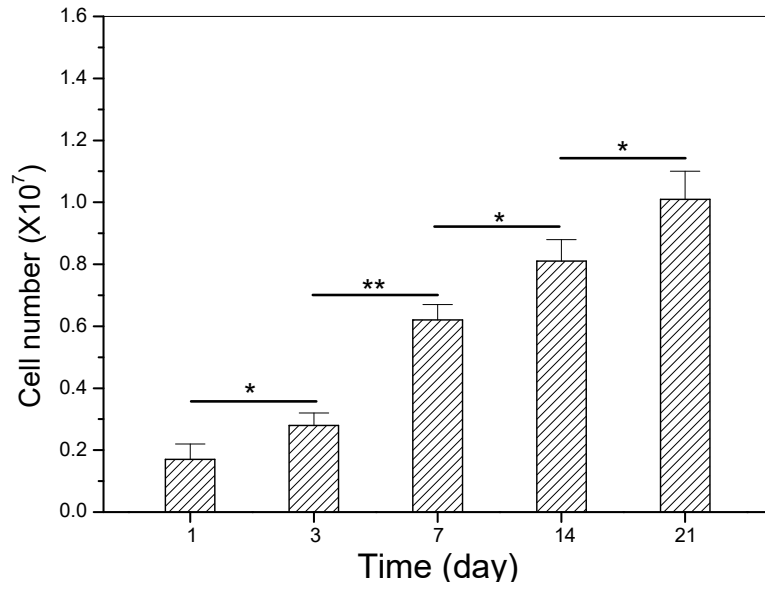
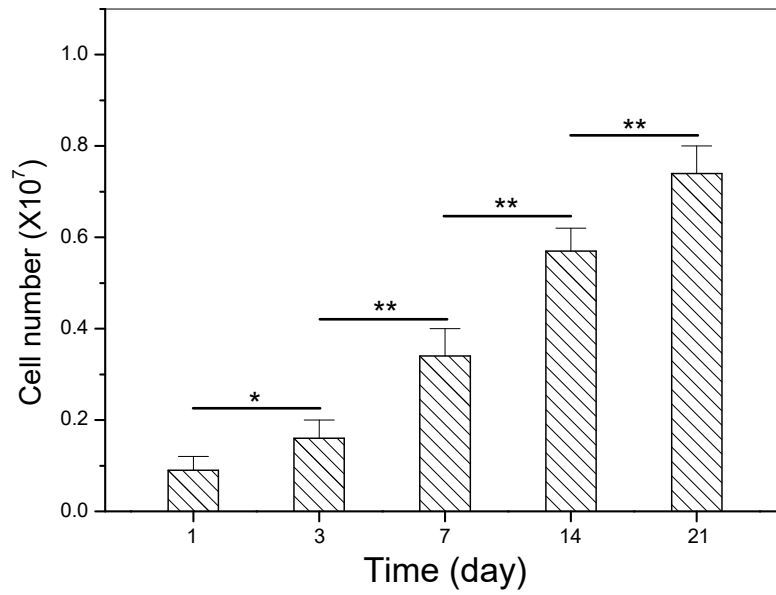
A**B**

Figure S3. Chondrocyte proliferation (A) in chondral layer and osteoblast; proliferation (B) in bony layer of the layered scaffolds (*, $p < 0.05$; **, $p < 0.01$) .