

Supplemental material

Yu et al., <https://doi.org/10.1084/jem.20180397>

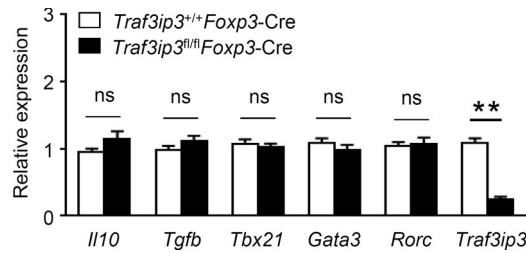


Figure S1. **Expressions of T reg cell related genes in *Traf3ip3*^{+/+} *Foxp3-Cre* and *Traf3ip3*^{fl/fl} *Foxp3-Cre* T reg cells.** Splenic T reg cells from 8-wk-old *Traf3ip3*^{+/+} *Foxp3-Cre* and *Traf3ip3*^{fl/fl} *Foxp3-Cre* mice were isolated for quantitative RT-PCR analysis. Data are representative of at least three independent experiments and are presented as mean ± SEM. ns, not statistically significant; **, P < 0.01. Student's *t* test.

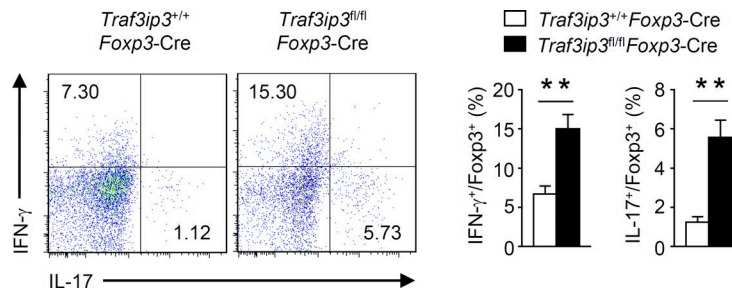


Figure S2. **Cytokine expression of gut T reg cells.** Flow cytometric analysis of IFN-γ and IL-17 expression in gut T reg cells from 8-wk-old *Traf3ip3*^{+/+} *Foxp3-Cre* and *Traf3ip3*^{fl/fl} *Foxp3-Cre* mice stimulated for 24 h with antibodies against CD3 and CD28. Data are representative of three independent experiments and are presented as mean ± SEM. **, P < 0.01. Student's *t* test.

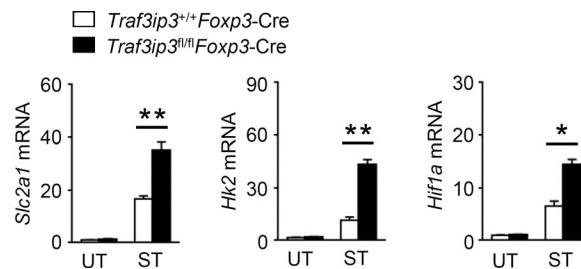


Figure S3. **Expressions of metabolism related genes in *Traf3ip3*^{+/+} *Foxp3-Cre* and *Traf3ip3*^{fl/fl} *Foxp3-Cre* T reg cells.** Splenic *Traf3ip3*^{+/+} *Foxp3-Cre* and *Traf3ip3*^{fl/fl} *Foxp3-Cre* T reg cells were stimulated for 0 (unstimulated; UT) or 24 h (stimulated; ST) with antibodies against CD3 and CD28 following quantitative RT-PCR analysis of glucose transporter GLUT1 (murine gene name *Slc2a1*), glycolytic enzyme hexokinase 2 and metabolic master regulator HIF1-α expression. Data are representative of three independent experiments and are presented as mean ± SEM. *, P < 0.05; **, P < 0.01. Student's *t* test.