

Borrok et al Supplemental figures

Figure S1

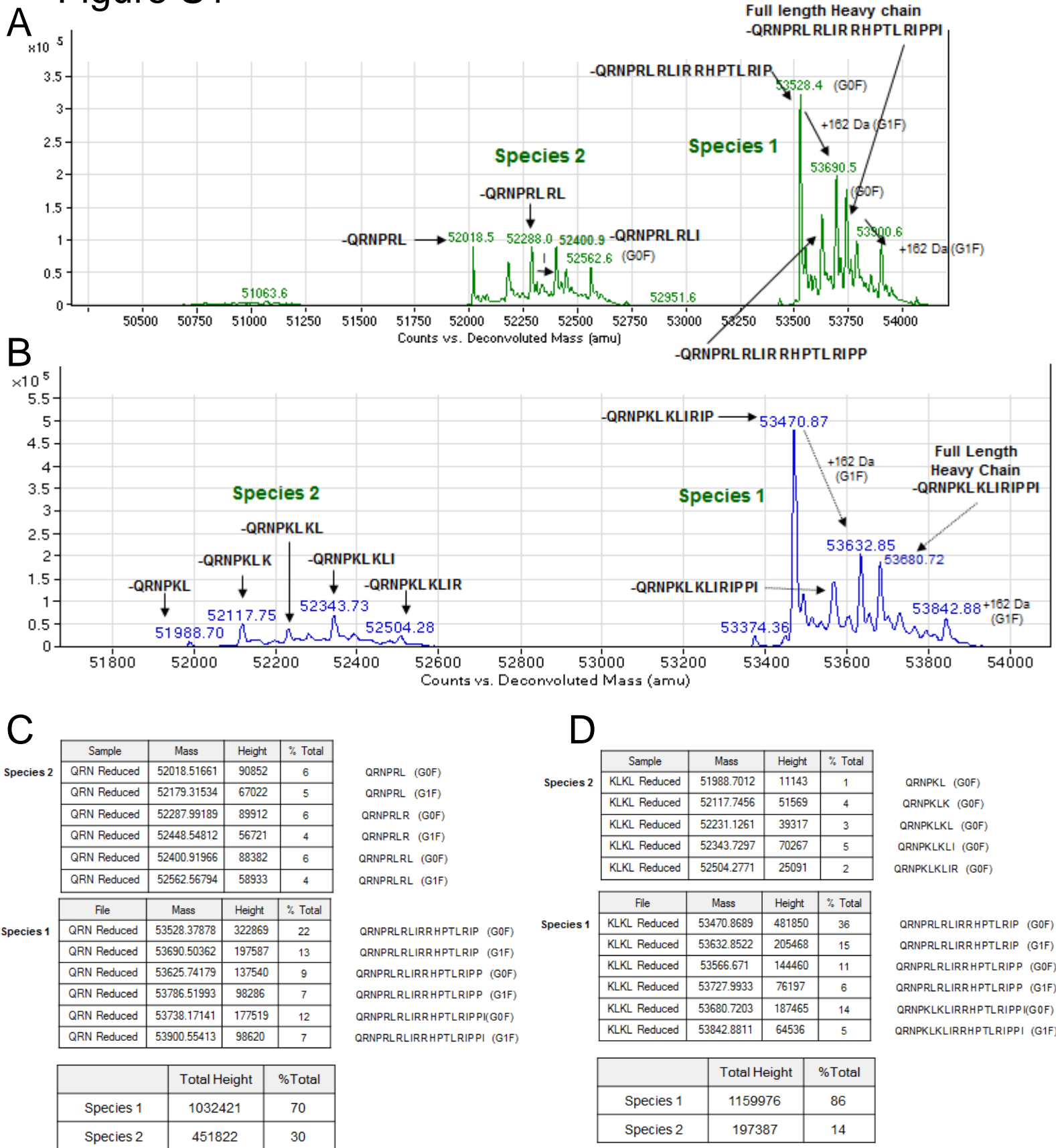


Figure S1. LC-MS of purified Cam-003-QRN and Cam-003-KLKL antibodies. Heavy Chain peaks identified after antibody reduction are shown for the QRN peptide fusion (A) and the KLKL fusion (B). Two major species are identified: Species 1 containing full length and 1 or 2 amino acid clipped species and Species 2 with cleavage occurring in the middle of the c-terminal peptide. Peak height was then used to estimate the relative abundance of either species 1 & 2 heavy chains for QRN (C) and KLKL (D) fused antibodies.

Table S1.

C-terminal Peptide Sequence	Reference	Monomer content upon purification	pIgR Binding
SAMFV PFDIAVGVRDGQQGL GGSRRK GARLREAISSYAE	White KD & Capra JD 2002. J. Exp. Med. 196(4):551-5.	>95%	Slight
VDDL TLQSRSPPSQLNSQHL LLSQLCGYWMFVRVRSRSCC G	White KD & Capra JD 2002. J. Exp. Med. 196(4):551-5.	60%	No
IPSV TRMTVGGTLRKEFQDV VLGVIFGLVLVINRCSFL	White KD & Capra JD 2002. J. Exp. Med. 196(4):551-5.	>95%	No
CVVW MGFQQVC	C9A peptide; Braathen R, <i>et al.</i> 2006 J. Biol. Chem. 281(11):7075-81.	60%	No
DDEATILADNKCMSTRVTSRII PSTEDPNEDIVERNIRIVVPLN NRENISDPTSPLRRNFVYHLS DVSKKCDPVEVELEDQVVTA TQSNICNEDDGVPETCYMYD RNKCYTTMVPLRYHGETKMV QAALTPDSCYLD	Murine J chain	61%	No
QEDERIVLVDNKCKSARITSRI IRSEDPNEDIVERNIRIIVPLN NRENISDPTSPLRTRFVYHLS DLSKKCDPTEVELDNQIVTAT QSNICDEDSATETCYTYDRN KCYTAVVPLVYGGETKMVET ALTPDACYPD	Human J chain	58%	No
QRN PRLRLIRRHPTLRIPPI	White KD & Capra JD 2002. J. Exp. Med. 196(4):551-5.	>95%	Yes
QRNPKLKL IRRHPTLRIPPI	This study; QRN derivative	>95%	Yes

All peptides (or J-chains) were fused to the IgG heavy chain C-terminal with a GGGGS linker as a spacer. Amino acids in bold are the abbreviated peptide name.

Table S2.

Sequence	% Species 1 (full length) via MS	pIgR binding
QRN PRLRL IRRHPTLRIPPI (original QRN)	70%	Yes
QRN PRRRR IRRHPTLRIPPI	<1%	No
QRN PRQRQ IRRHPTLRIPPI	N.D.	No
QRN PRKRK IRRHPTLRIPPI	42%	Yes
QRN PRRPI IRRHPTLRIPPI	N.D.	No
QRN PKLKL IRRHPTLRIPPI	85%	Yes

Mutations in the 'RLRL' sequence of the QRN peptide were mutated and analyzed for pIgR binding and percentage of 'full-length' peptide.

Figure S2

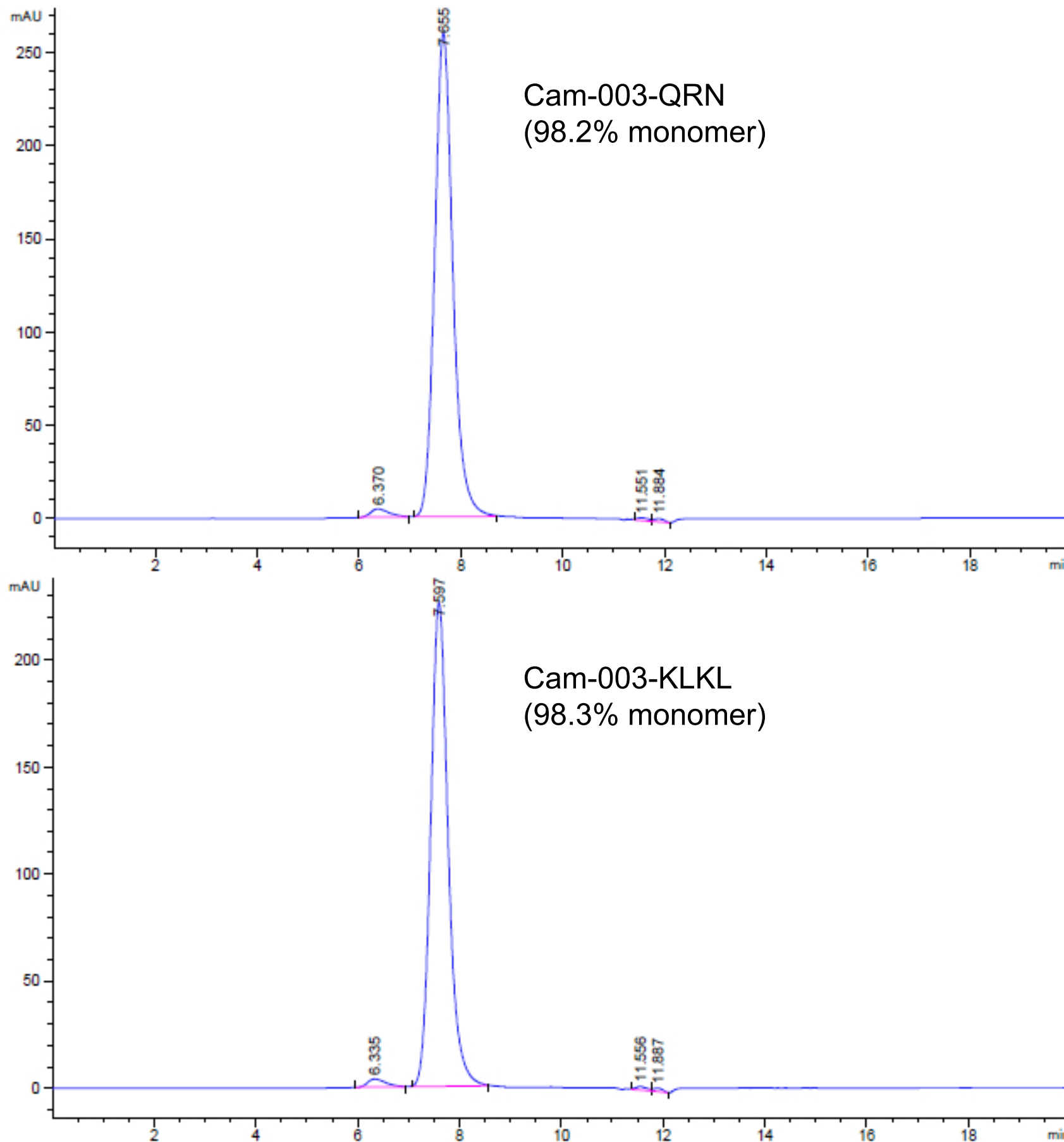


Figure S2. Size exclusion Chromatography (SEC) traces of purified Cam-003-QRN and Cam-003-KLKL

Figure S3

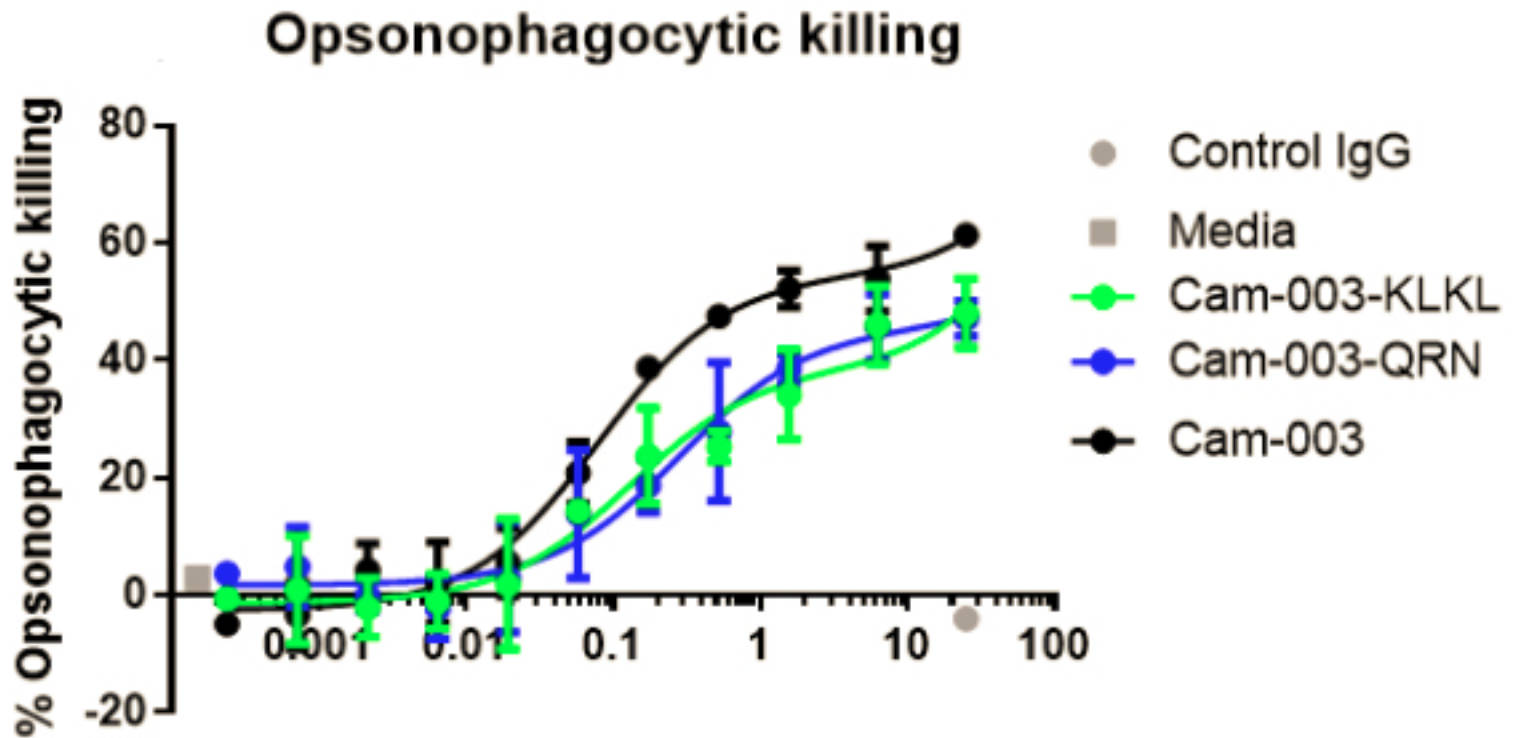


Figure S3. Opsonophagocytosis assay with luminescent *P. aeruginosa* serogroup 05 strain PAO1 (PAO1.lux) & baby rabbit complement show Cam-003-QRN (blue) and Cam-003-KLKL (green) having slightly decreased OPK activity compared to the parental molecule Cam-003 (black) (A). No OPK activity was observed for the isotype control IgG R347 (grey circle) or media alone (grey square). Data are representative of at least 2 independent experiments.