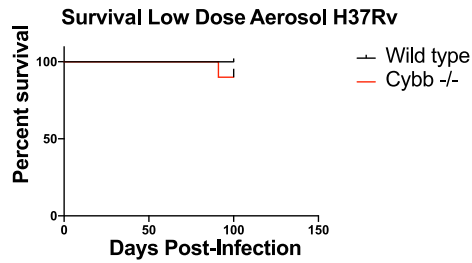
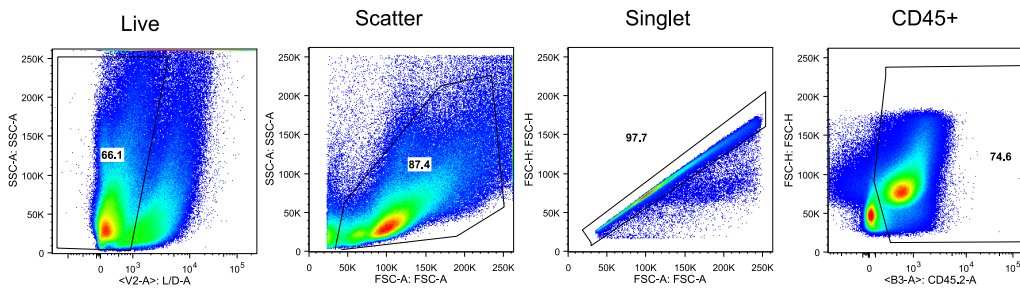
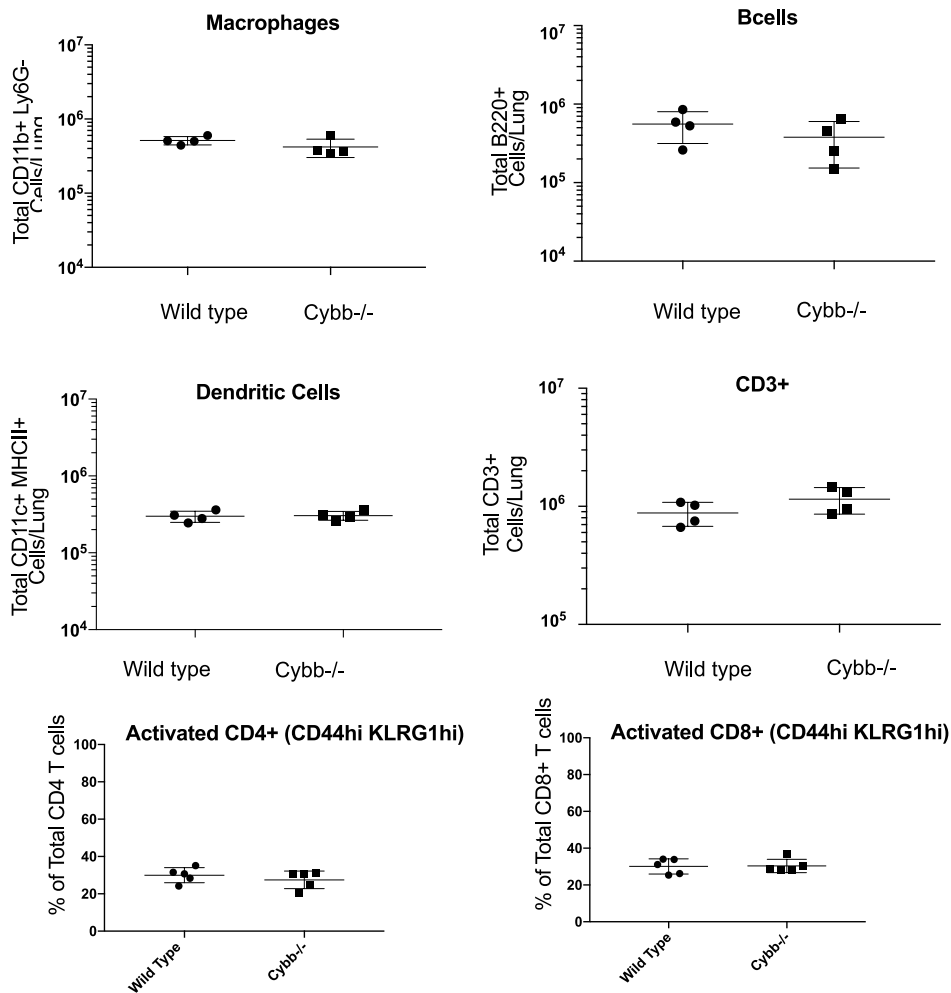
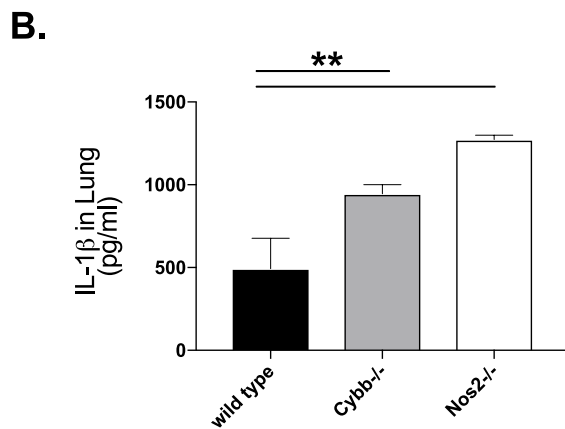
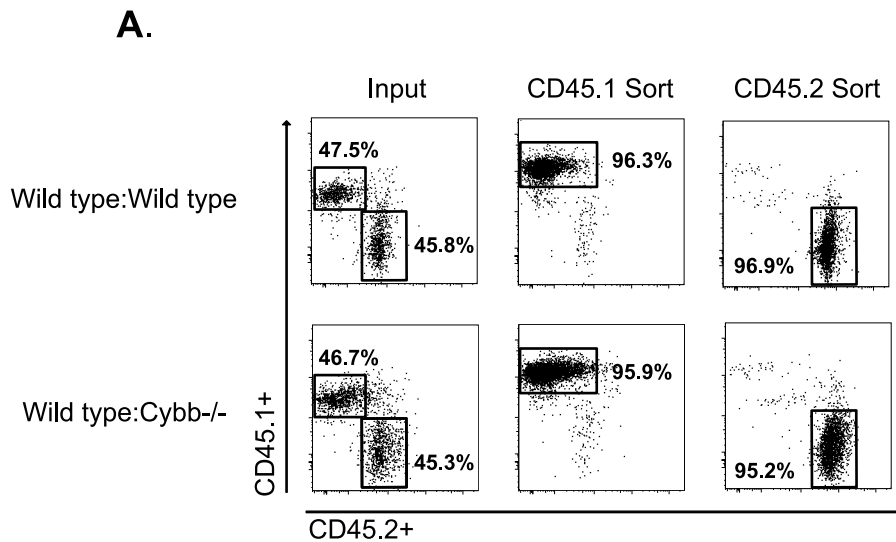


**A.****B.****C.****Figure S1**

**A.** Survival curve for wild type and Cybb<sup>-/-</sup> mice following low dose aerosol infection (n=10).

**B.** Gating strategy used for all flow cytometry analysis. Shown is a representative gating approach for the analysis used throughout the paper. Cells were first gated on live/dead negative cells then forward by side scatter then singlets. We then gated on all CD45<sup>+</sup> cells in and analyzed the subsequent populations using the indicated fluorescent markers.

**C.** Quantification of macrophages, B cells, Dendritic cells and T cells recruitment to the lungs at the 28 days following infection for wild type and Cybb<sup>-/-</sup> mice is shown as absolute number of cells per lung (mean <sup>+/-</sup> s.d.).



**Figure S2**

**A.** A representative sample of the purity of the cell populations depicted in “Figure 2b and c” were determined in the input and sorted fraction of MACS purification of the lung leukocytes from mixed-bone marrow chimeric mice.

**B.** Lung homogenates from wild type, *Cybb*<sup>-/-</sup> or *Nos2*<sup>-/-</sup> mice infected with *Mtb* for 28 days were probed for the cytokines IL-1 by ELISA (mean  $\pm$  s.d). Results are representative of 3 independent experiments with 3-5 mice per group. \*\* p-value <.01 by unpaired two-tailed t-test.