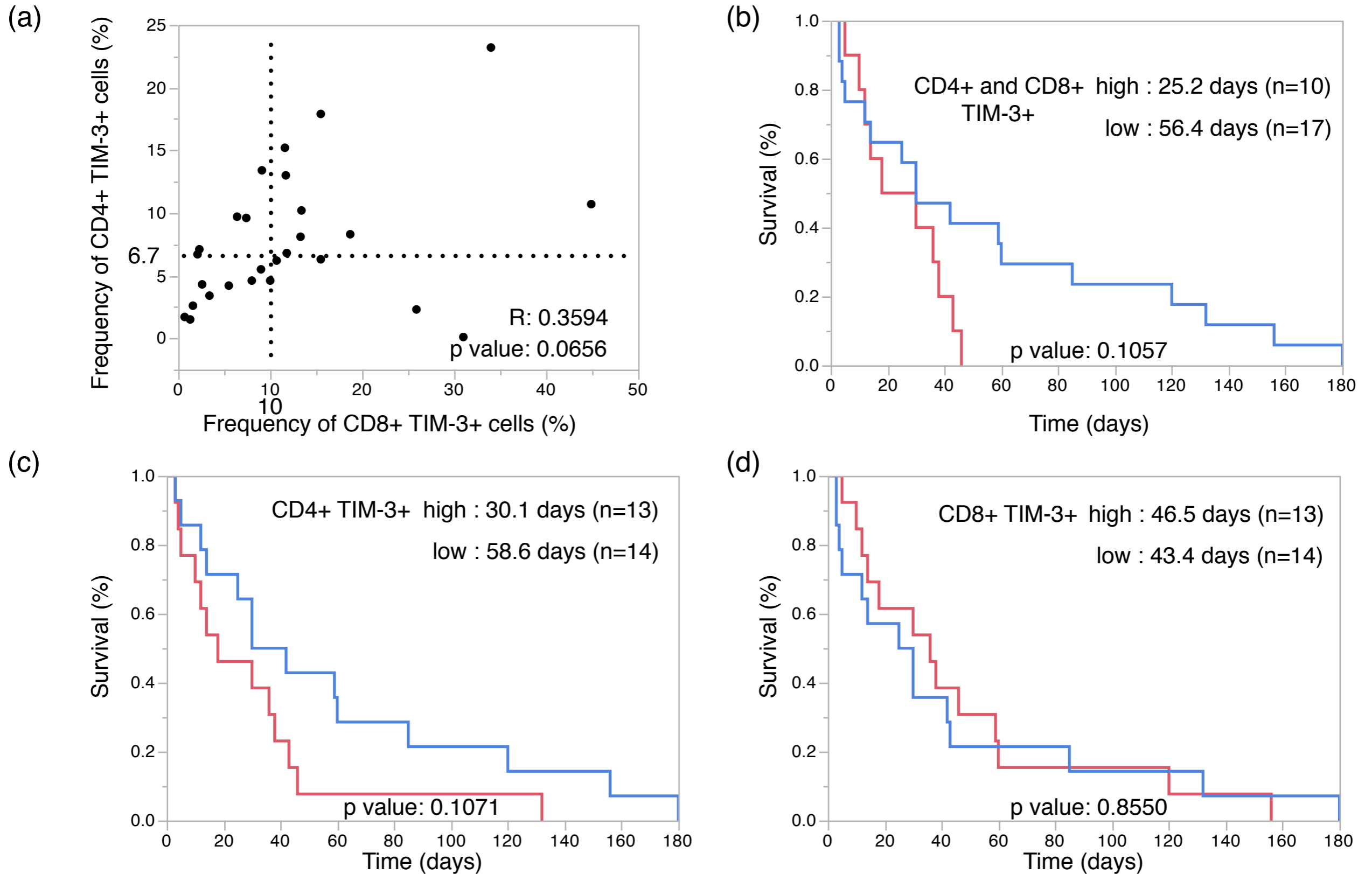


Figure S5

Prognosis according to TIM-3+ TILs among the CD4+ and CD8+ cell populations in gastrointestinal malignancies.



(a) Dot plot of the frequency of TIM-3+ ascites TILs among CD4+ and CD8+ T cells. The cut-off value was defined by the median of the 27 cases (median CD4+, 6.7%; median CD8+, 10.0%).

(b, c, d) Kaplan-Meier curves for overall survival of the indicated patient groups, as classified by the frequency of TIM-3+ cells among CD4+ and CD8+, CD4+, CD8+ ascites TILs. Median overall survival (days) of each patient group was shown in a frame.