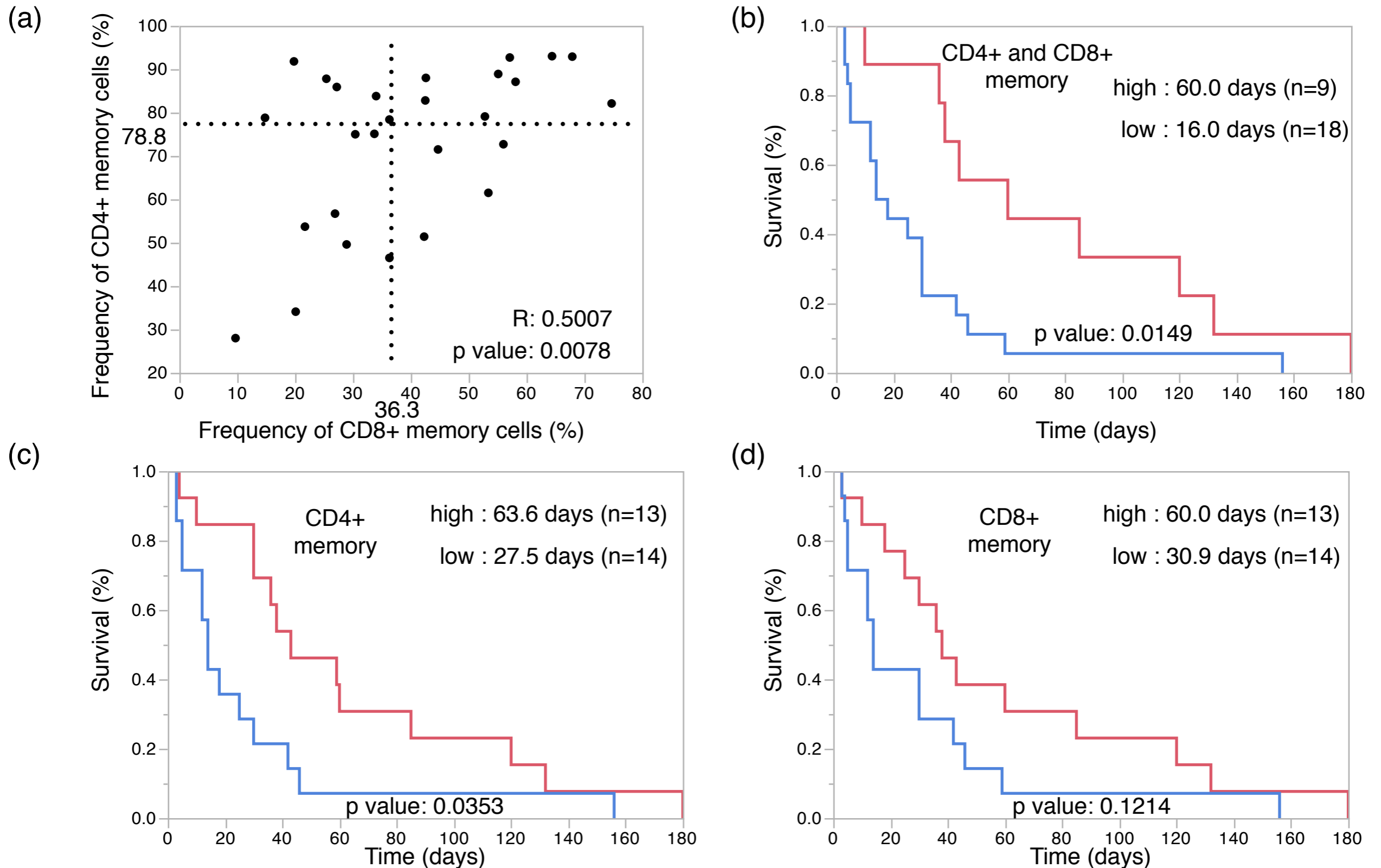


Figure S6

Memory ascites TILs among the CD4+ and CD8+ cell population predict prognosis of gastrointestinal malignancies.



(a) Dot plot of the frequency of CD45RA- memory ascites TILs among CD4+ and CD8+ T cells. The cut-off value was defined by the median of the 27 cases (median CD4+, 78.8%; median CD8+, 36.3%).

(b, c, d) Kaplan-Meier curves for overall survival of the indicated patient groups, as classified by the frequency of memory T cells among CD4+ and CD8+, CD4+, CD8+ ascites TILs. Median overall survival (days) of each patient group was shown in a frame.