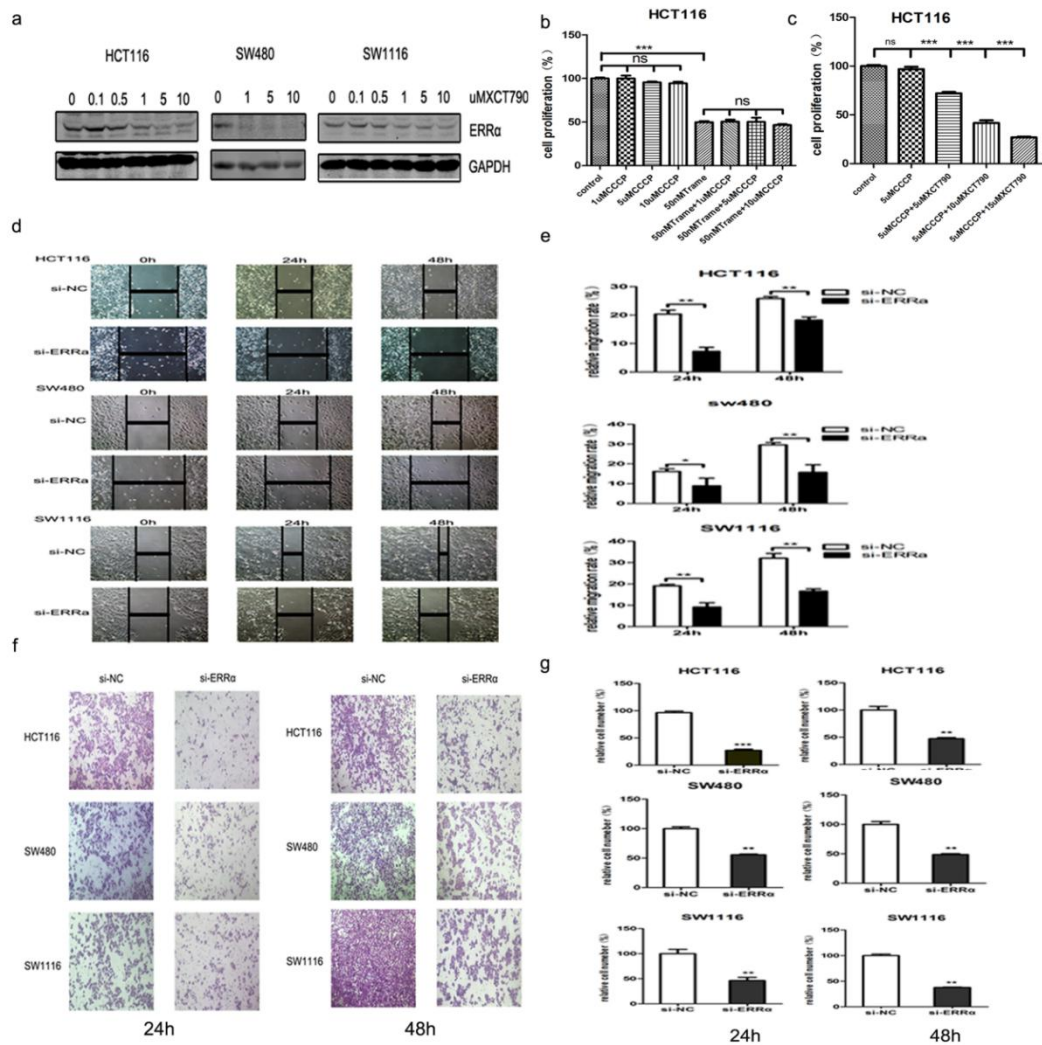


**Additional file 1:**



**Figure S1.** ERRα controls the growth of colon cancer cells. **a** ERRα was identified and confirmed by Western blot analysis when colon cancer cells were treated with the indicated concentrations of XCT790 (0-10 μM) or DMSO for 48 h. **b** Cell proliferation assays at day 3 after the SW480 cells were cultured with trametinib (50nM) or/and CCCP (1μM 5 μM and 10 μM) by using the Cell Counting Kit-8. **c** Cell proliferation assays at day 3 after the SW480 cells were cultured with CCCP (5μM) or/and XCT790 (5 μM, 10 μM and 15 μM) by using the Cell Counting Kit-8. **d, e** Wound distance percentage of the HCT116, SW480 and SW1116 cells at 0, 24 h, and 48 h after si-ERRα#2 treatment; (\* P<0.05; \*\* P<0.01; \*\*\* P<0.001). The data are presented as the mean±SD of the experiments performed in triplicate. **f, g** Invasion assay of the HCT116, SW480 and SW1116 cells after 24 h and 48 h of transfection with si-ERRα#2 (\* P<0.05; \*\* P<0.01; \*\*\* P<0.001). The data are presented as the mean±SD of the experiments performed in triplicate.